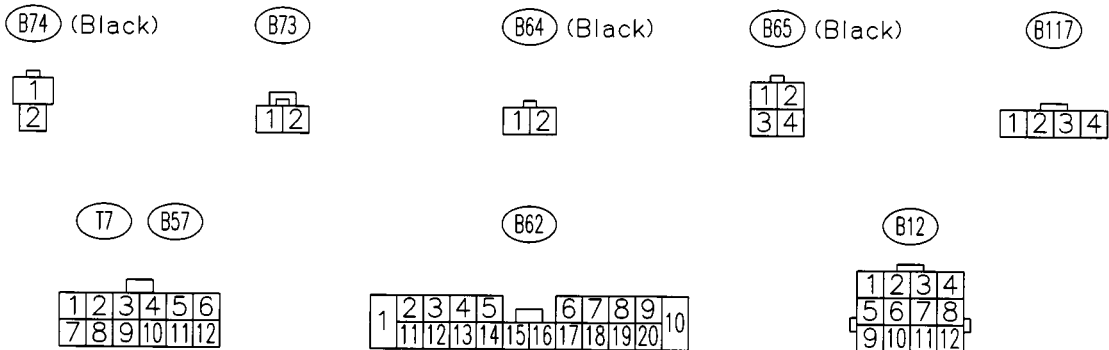
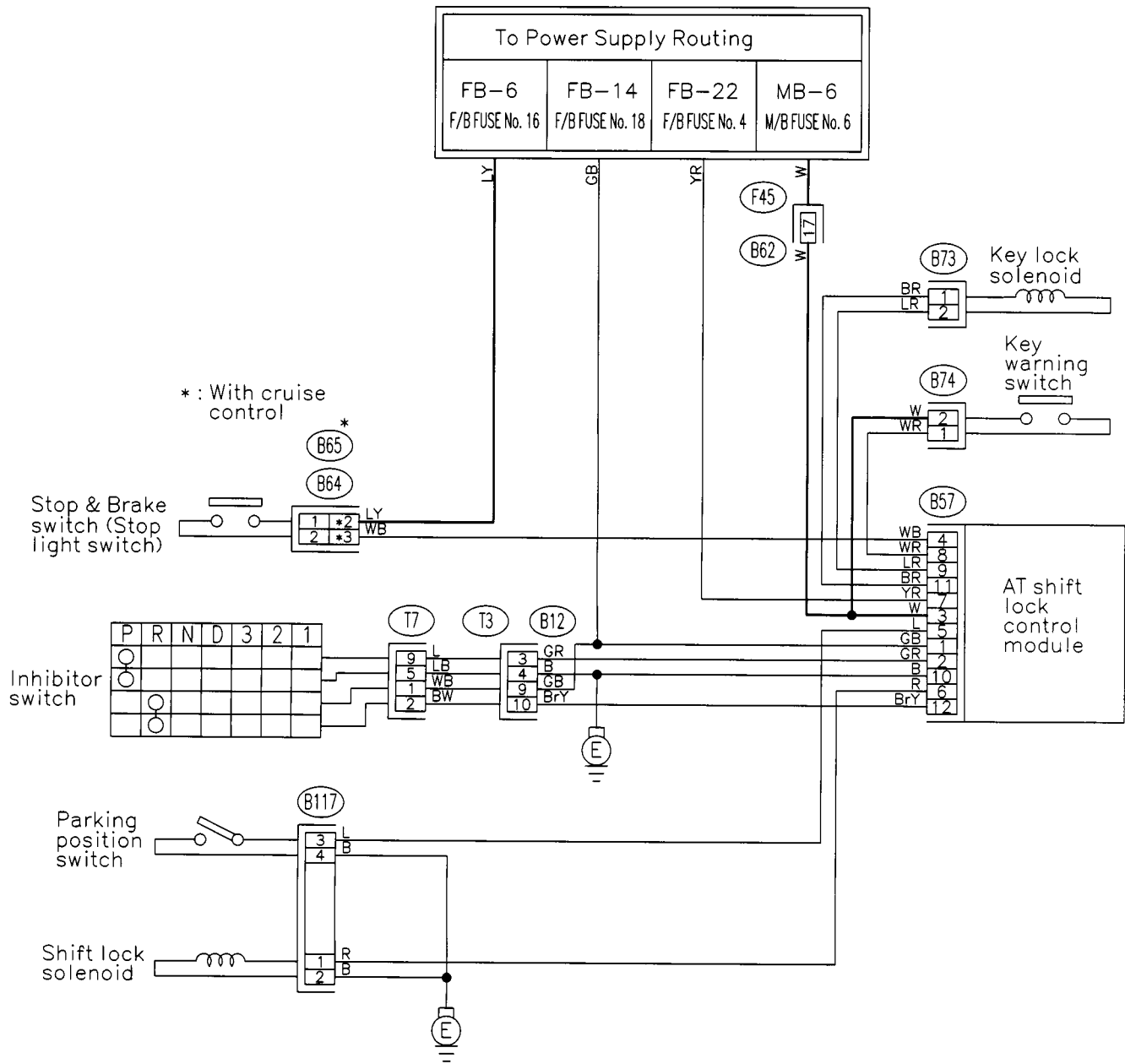


2. AT Shift Lock System

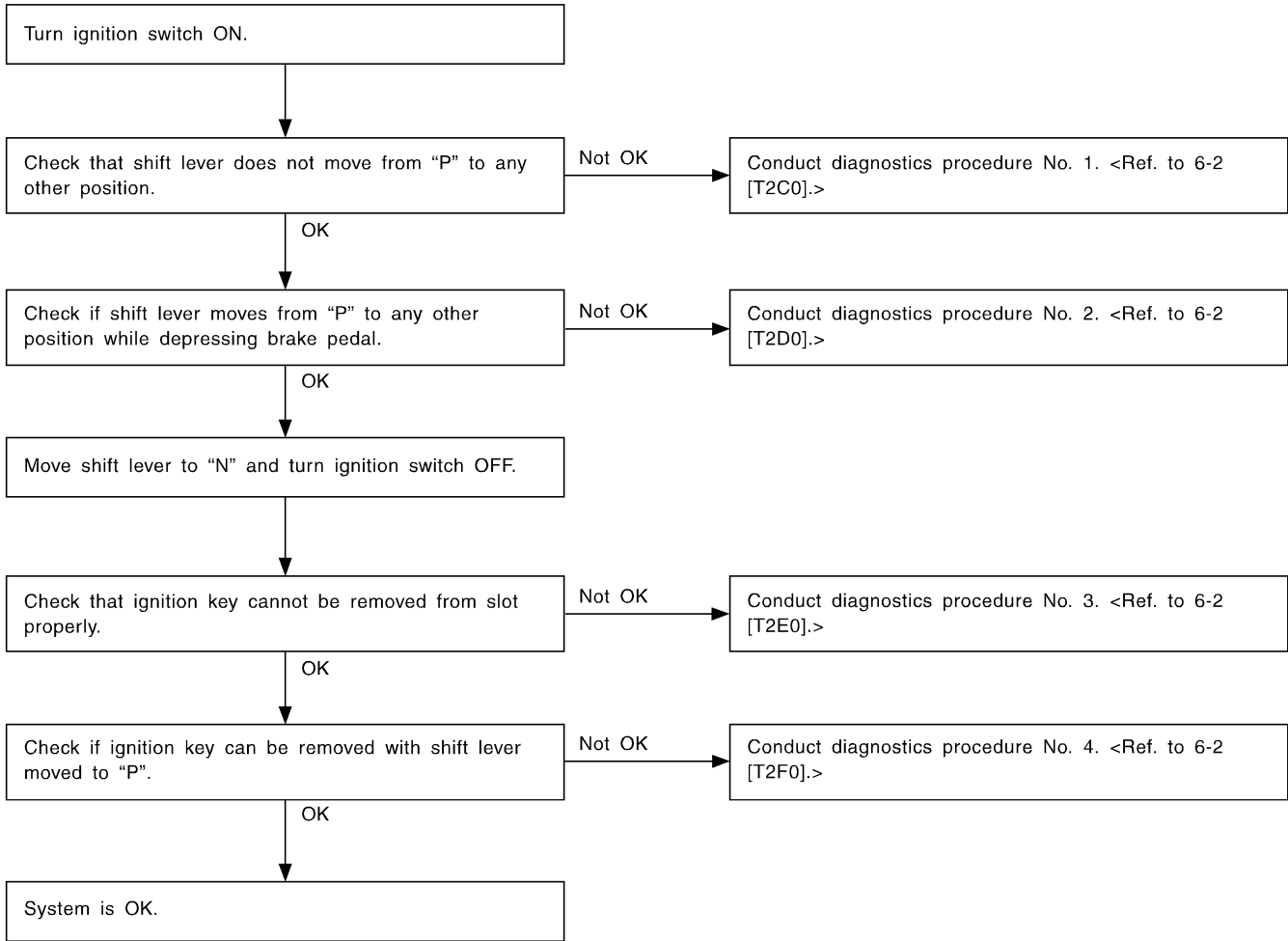
A: WIRING DIAGRAM



SU42-04

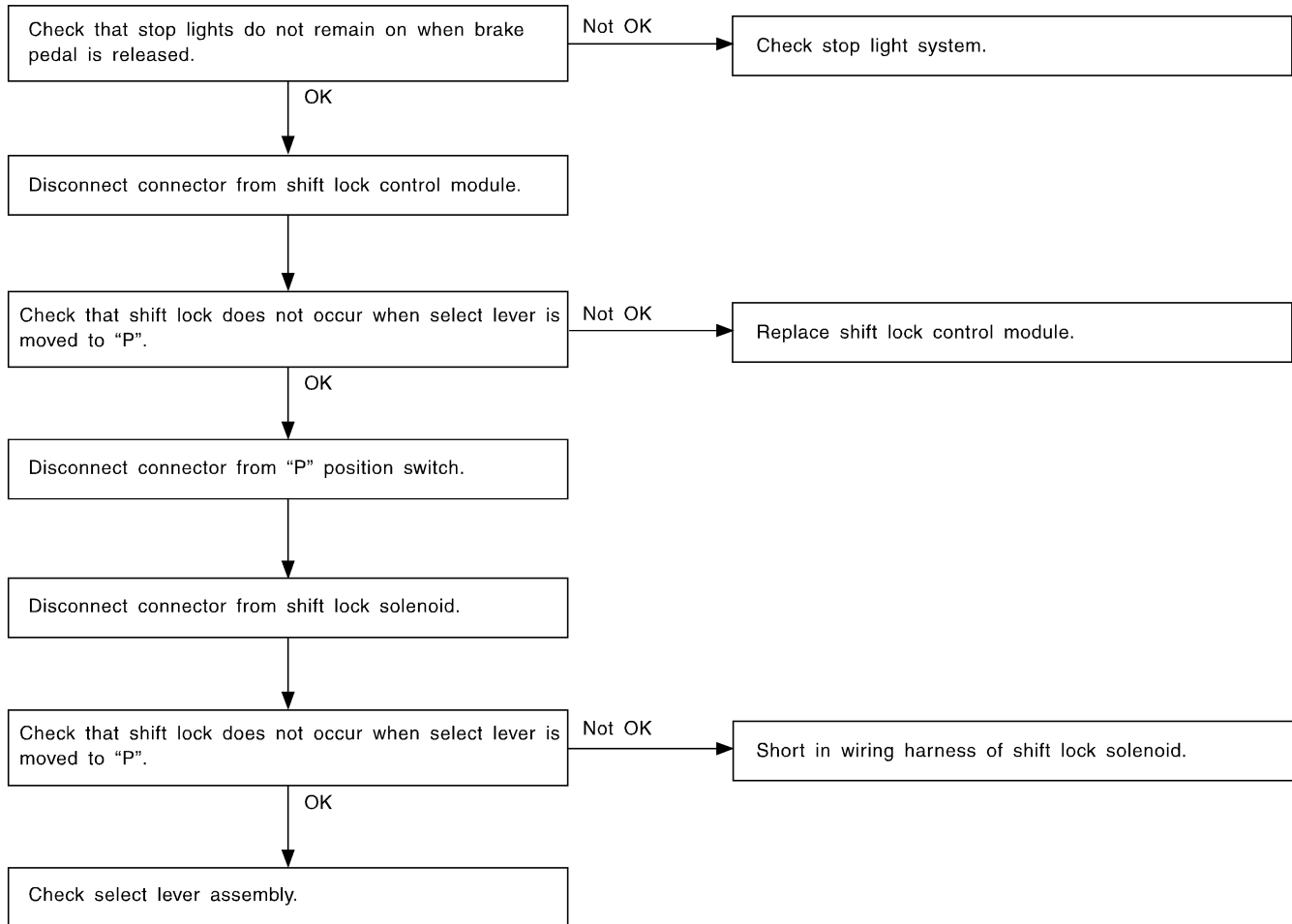
SU42-04

B: BASIC DIAGNOSTICS CHART



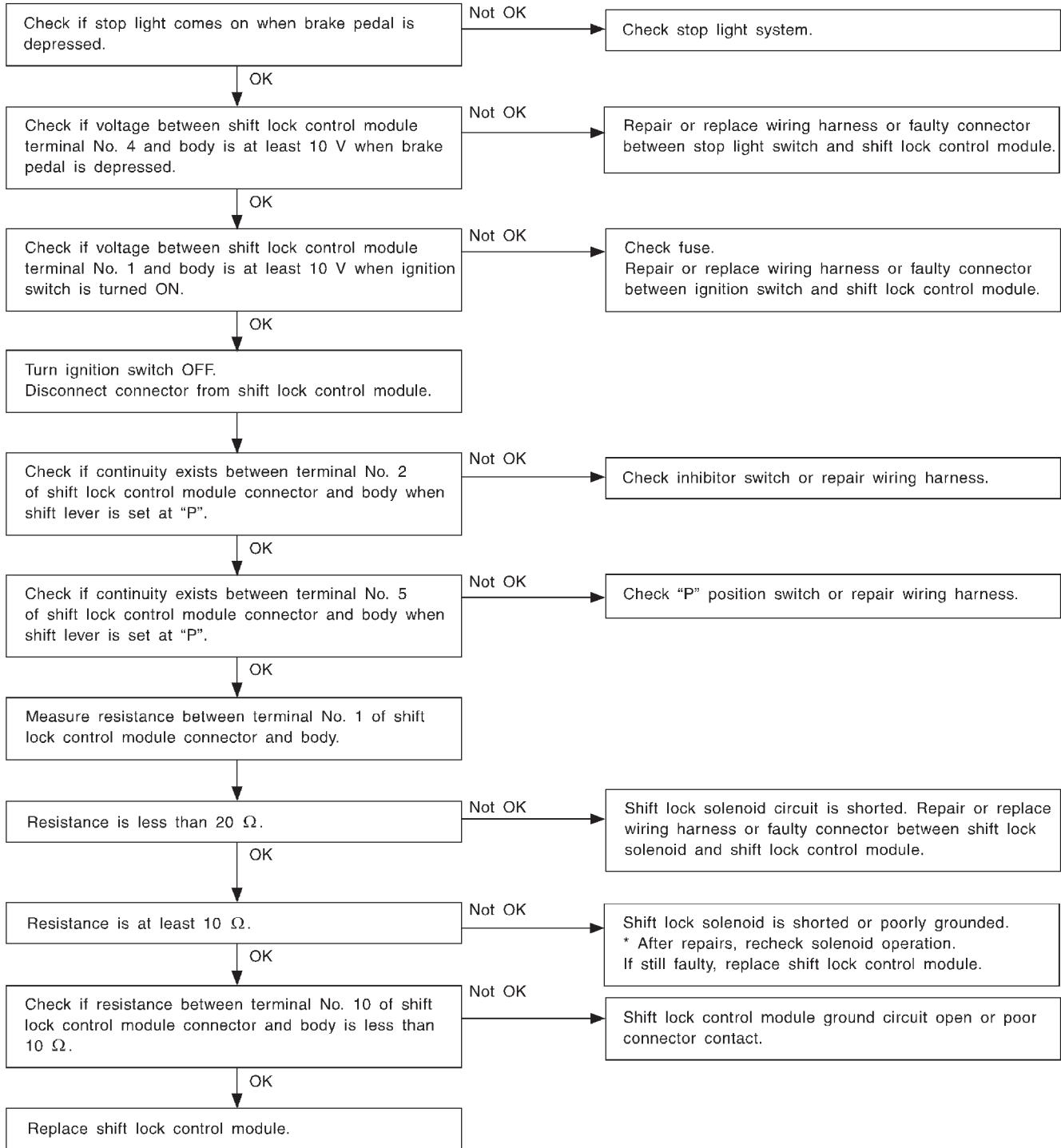
H6M0504B

C: DIAGNOSTICS PROCEDURE NO. 1



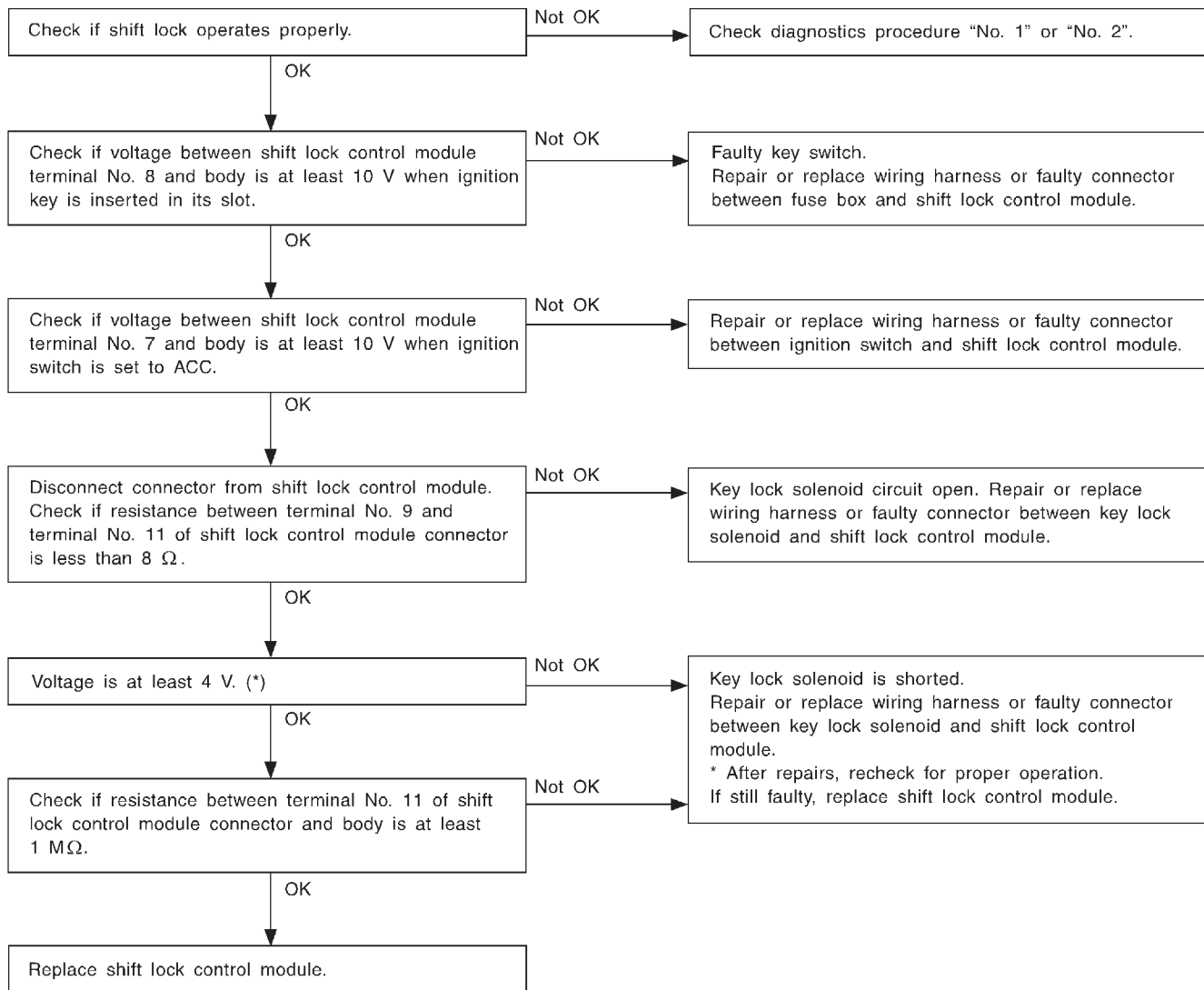
H6M0505A

**D: DIAGNOSTICS PROCEDURE NO. 2 (SHIFT LOCK DOES NOT RELEASE.)**



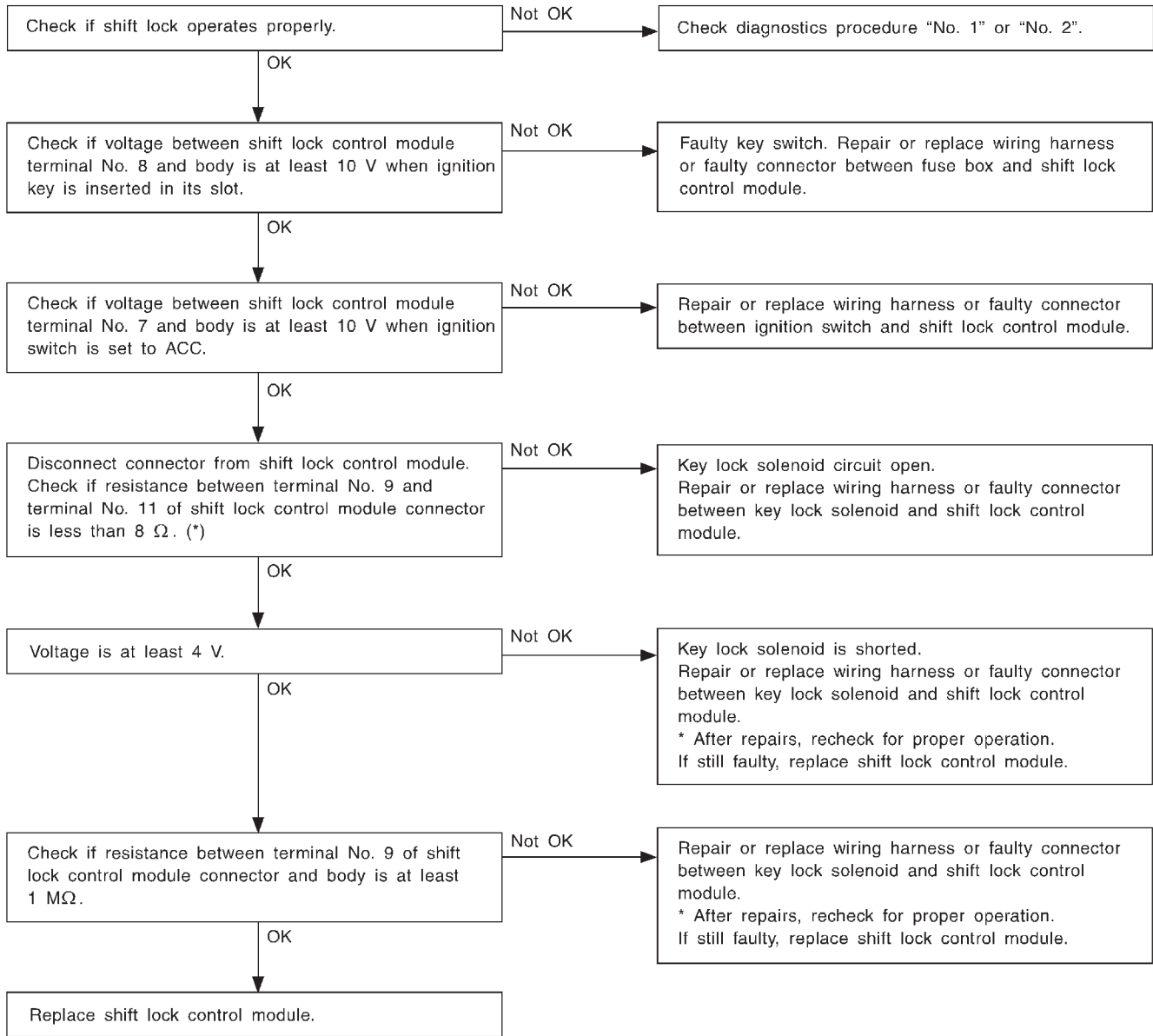
H6M0506

**E: DIAGNOSTICS PROCEDURE NO. 3 (KEY INTERLOCK DOES NOT OPERATE.)**



**\*: When conducting operational checks of the key lock solenoid, do not apply 12 V to solenoid for more than one second, since this may break solenoid circuit.**

**F: DIAGNOSTICS PROCEDURE NO. 4 (KEY INTERLOCK DOES NOT RELEASE.)**



\*: When conducting operational checks of the key lock solenoid, do not apply 12 V to solenoid for more than one second, since this may break solenoid circuit.