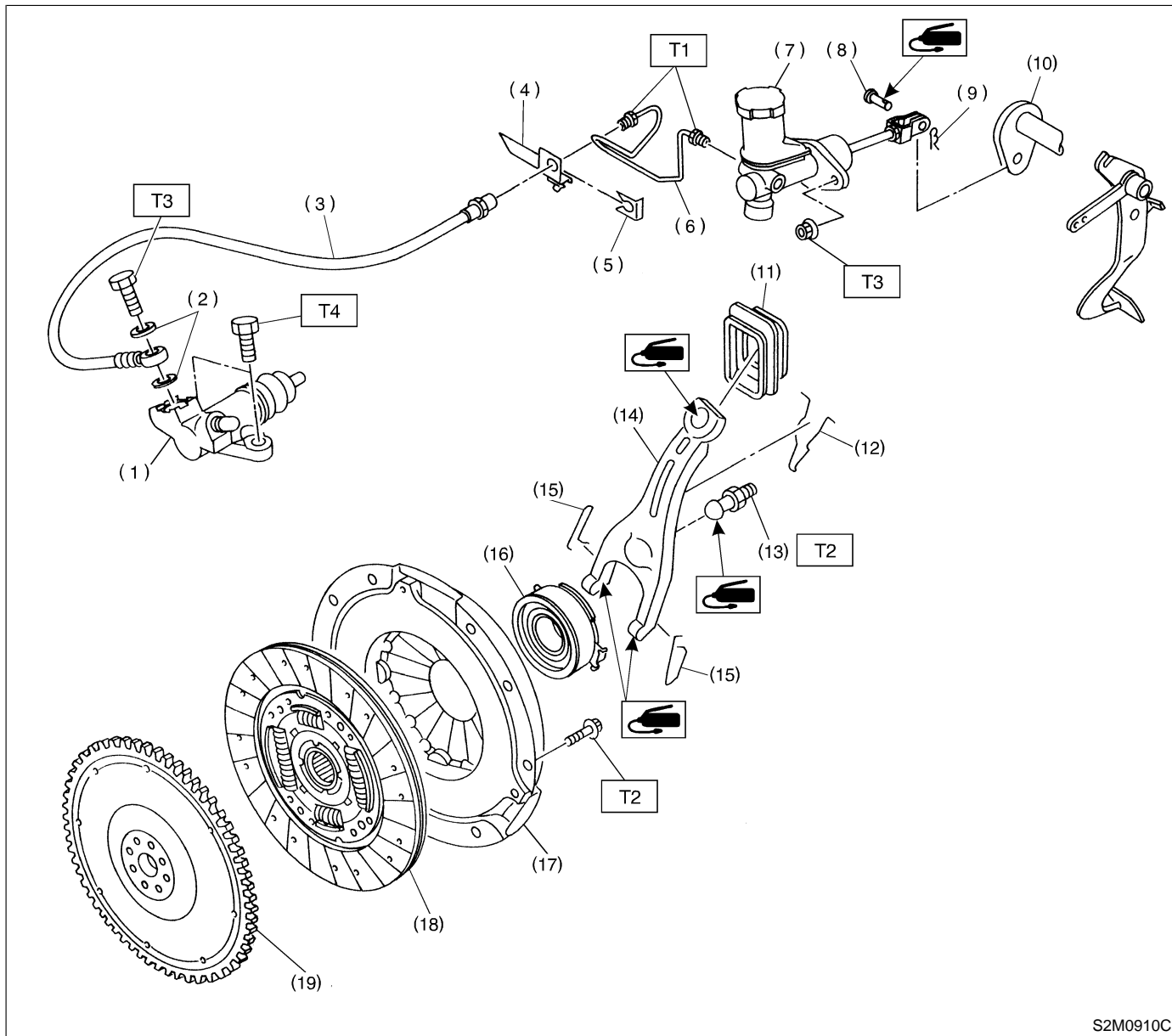


1. Clutch System



S2M0910C

- | | |
|--------------------------|-----------------------------------|
| (1) Operating cylinder | (10) Lever |
| (2) Washer | (11) Clutch release lever sealing |
| (3) Clutch hose | (12) Retainer spring |
| (4) Bracket | (13) Pivot |
| (5) Clip | (14) Clutch release lever |
| (6) Pipe | (15) Clip |
| (7) Master cylinder ASSY | (16) Clutch release bearing |
| (8) Clevis pin | (17) Clutch cover |
| (9) Snap pin | (18) Clutch disc |

- (19) Flywheel

Tightening torque: N·m (kg·m, ft·lb)
T1: $15^{+3}/_{-2}$ ($1.5^{+0.3}/_{-0.2}$, $10.8^{+2.2}/_{-1.4}$)
T2: 15.7 ± 1.5 (1.6 ± 0.15 , 11.6 ± 1.1)
T3: 18 ± 3 (1.8 ± 0.3 , 13.0 ± 2.2)
T4: 37 ± 3 (3.8 ± 0.3 , 27.5 ± 2.2)