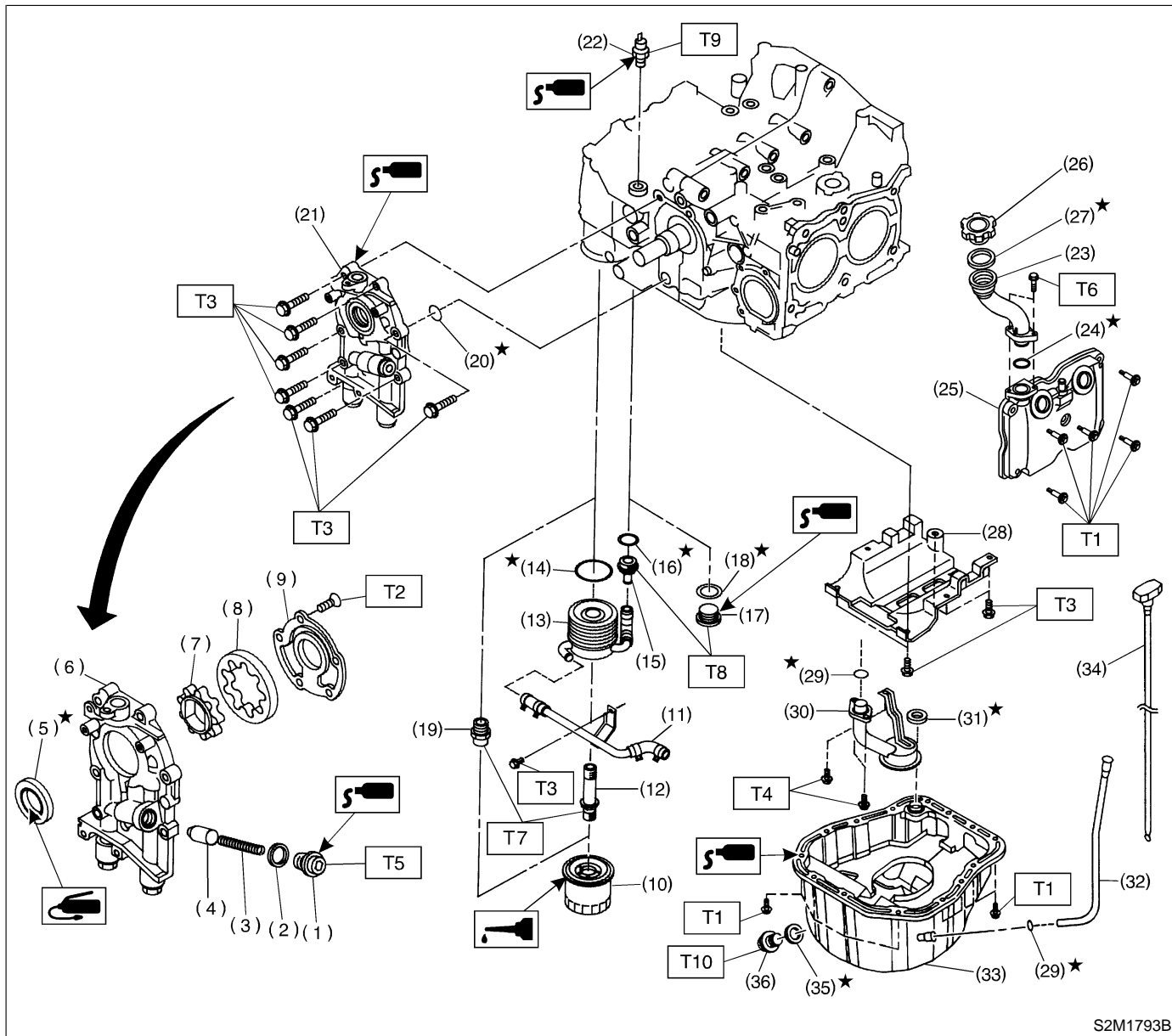


1. Lubrication System



1. Lubrication System

- (1) Plug
- (2) Washer
- (3) Relief valve spring
- (4) Relief valve
- (5) Oil seal
- (6) Oil pump case
- (7) Inner rotor
- (8) Outer rotor
- (9) Oil pump cover
- (10) Oil filter
- (11) Oil cooler pipe and hose ASSY
(AT vehicles)
- (12) Connector (AT vehicles)
- (13) Oil cooler (AT vehicles)
- (14) Gasket (AT vehicles)
- (15) Nipple (AT vehicles)
- (16) Gasket (AT vehicles)

- (17) Plug (MT vehicles)
- (18) Gasket (MT vehicles)
- (19) Oil filter connector (MT vehicles)
- (20) O-ring
- (21) Oil pump ASSY
- (22) Oil pressure switch
- (23) Oil filler duct
- (24) O-ring
- (25) Cylinder head cover
- (26) Oil filler cap
- (27) O-ring
- (28) Baffle plate
- (29) O-ring
- (30) Oil strainer
- (31) Gasket
- (32) Oil level gauge guide
- (33) Oil pan

- (34) Oil level gauge
- (35) Metal gasket
- (36) Drain plug

Tightening torque: N·m (kg-m, ft-lb)**T1: 5 (0.5, 3.6)****T2: $5^{+1}/_{-0}$ ($0.5^{+0.1}/_{-0}$, $3.6^{+0.7}/_{-0}$)****T3: 6.4 (0.65, 4.7)****T4: 10 (1.0, 7.0)****T5: 44.1 ± 3.4 (4.5 ± 0.35 , 32.5 ± 2.5)****T6: 6.4 ± 0.5 (0.65 ± 0.05 , 4.7 ± 0.4)****T7: 54 ± 5 (5.5 ± 0.5 , 39.8 ± 3.6)****T8: 69 ± 7 (7.0 ± 0.7 , 50.6 ± 5.1)****T9: 25 ± 3 (2.5 ± 0.3 , 18.1 ± 2.2)****T10: 44 (4.5, 33)**