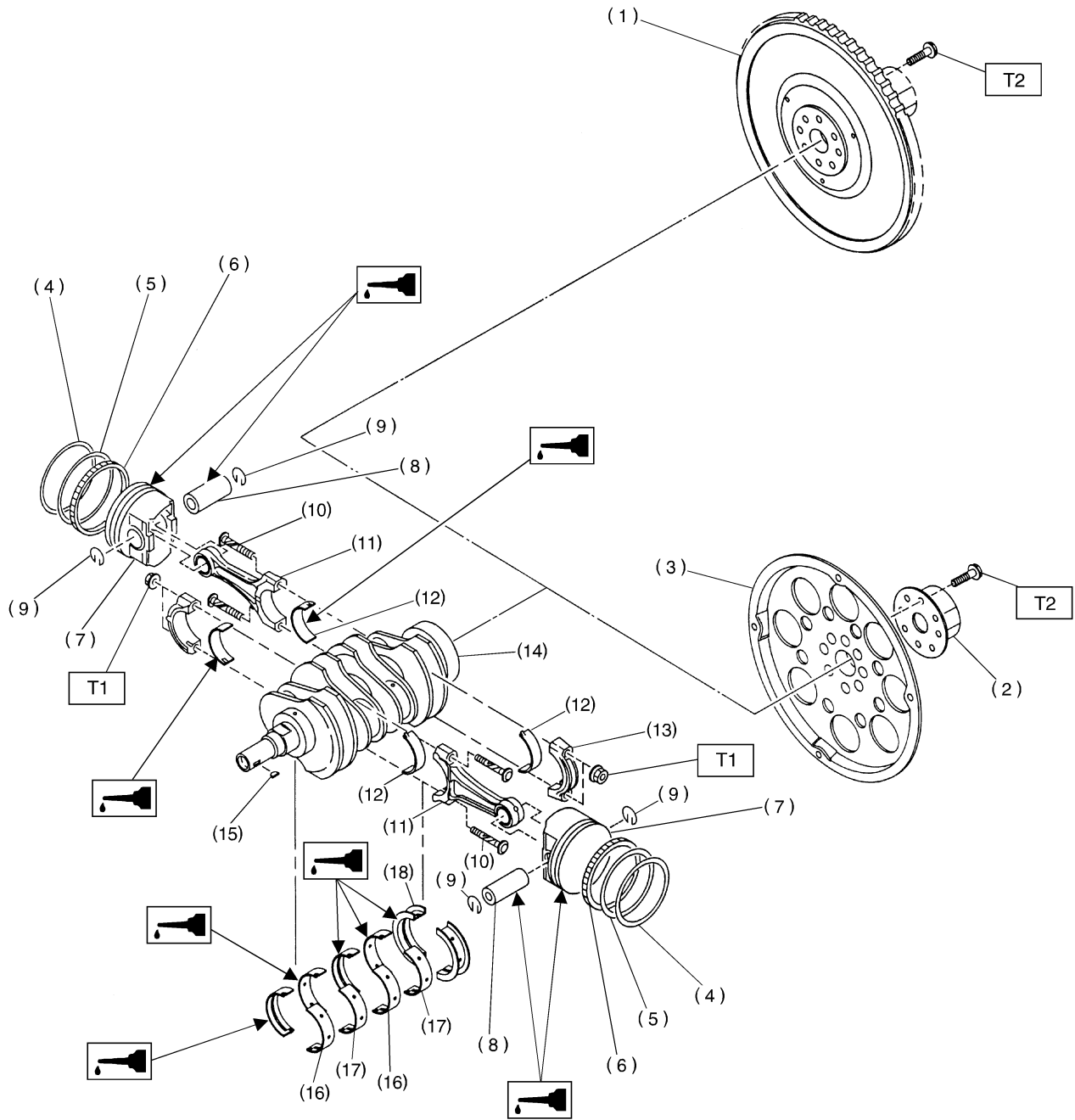


5. Crankshaft and Piston



B2M3429A

- | | | |
|------------------------|--------------------------------|--------------------------------|
| (1) Flywheel (MT) | (9) Circlip | (17) Crankshaft bearing #2, #4 |
| (2) Reinforcement (AT) | (10) Connecting rod bolt | (18) Crankshaft bearing #5 |
| (3) Drive plate (AT) | (11) Connecting rod | |
| (4) Top ring | (12) Connecting rod bearing | |
| (5) Second ring | (13) Connecting rod cap | |
| (6) Oil ring | (14) Crankshaft | |
| (7) Piston | (15) Woodruff key | |
| (8) Piston pin | (16) Crankshaft bearing #1, #3 | |

Tightening torque: N·m (kg·m, ft·lb)

T1: 44.6±1.5 (4.55±0.15, 32.9±1.1)

T2: 72±3 (7.3±0.3, 52.8±2.2)
