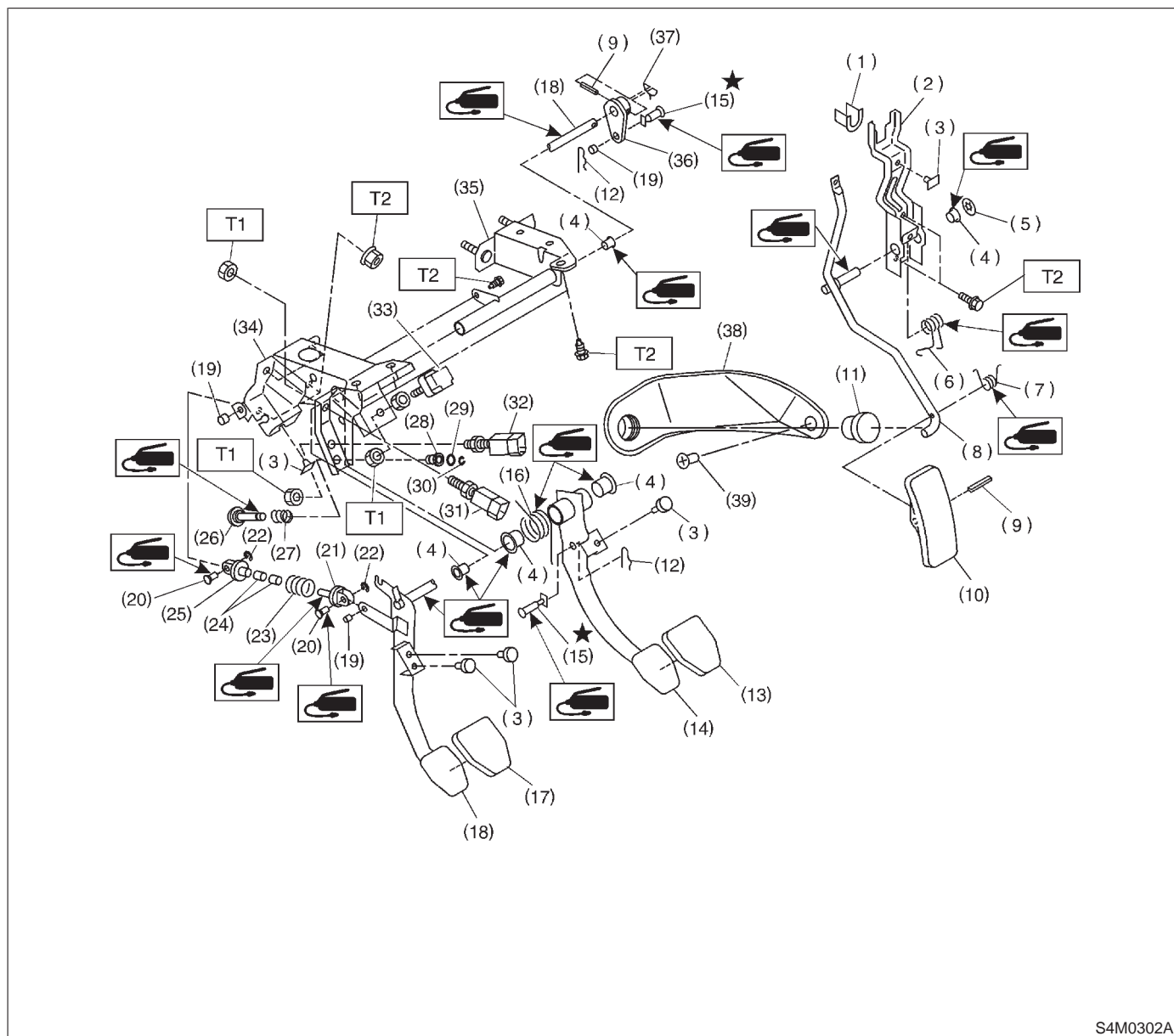


1. Pedal

A: MT MODEL



S4M0302A

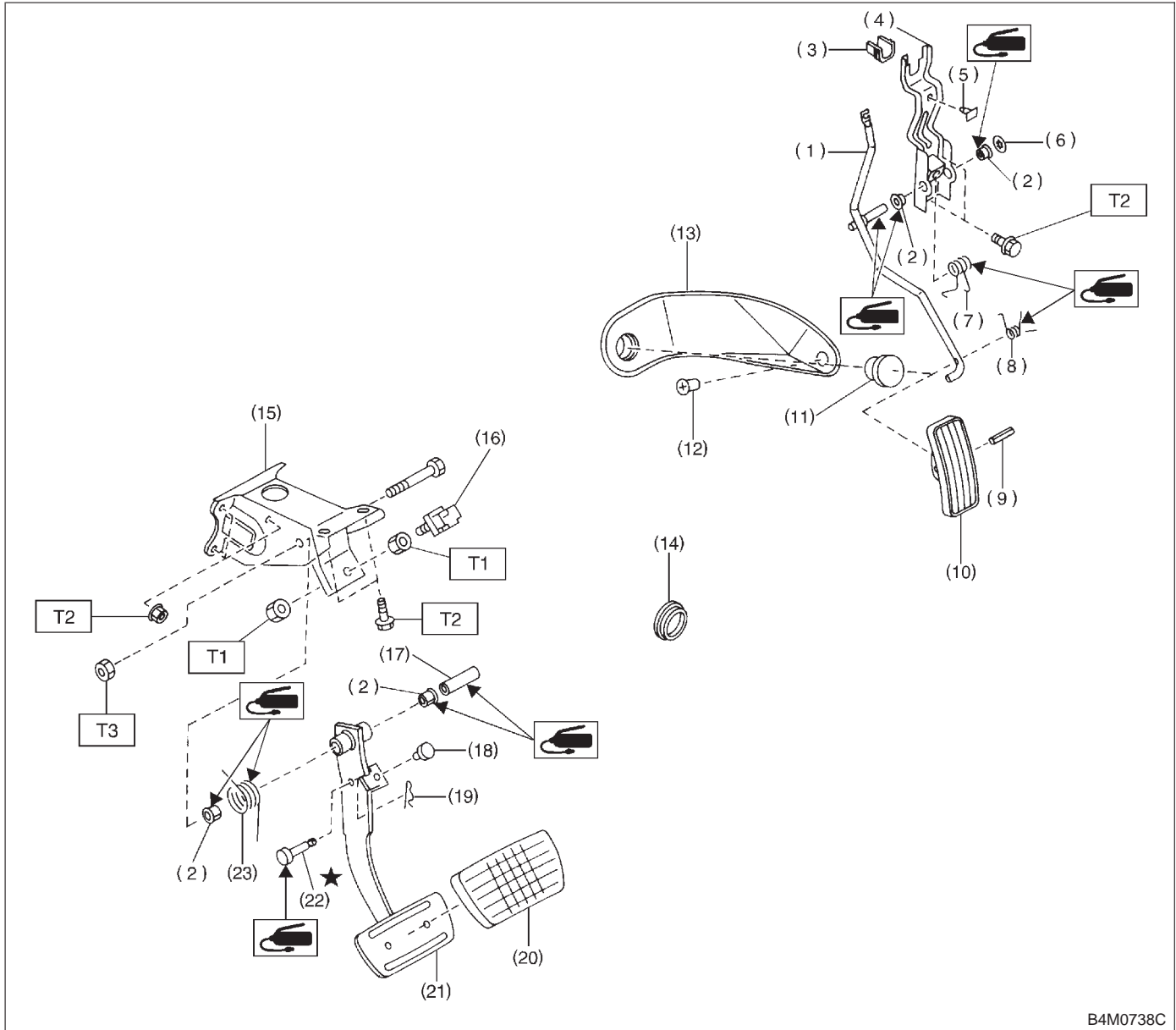
- | | | |
|------------------------------|-------------------------|------------------------------------------|
| (1) Holder | (16) Brake pedal spring | (31) Clutch switch (Starter interlock) |
| (2) Accelerator bracket | (17) Clutch pedal pad | (32) Clutch switch (With cruise control) |
| (3) Stopper | (18) Clutch pedal | (33) Stop light switch |
| (4) Bushing | (19) Bushing C | (34) Pedal bracket |
| (5) Clip | (20) Clutch clevis pin | (35) Clutch master cylinder bracket |
| (6) Accelerator spring | (21) Assist rod A | (36) Lever |
| (7) Accelerator pedal spring | (22) Clip | (37) Lock wire |
| (8) Accelerator pedal | (23) Assist spring | (38) Accelerator plate |
| (9) Spring pin | (24) Assist bushing | (39) Clip |
| (10) Accelerator pedal pad | (25) Assist rod B | |
| (11) Accelerator stopper | (26) Rod S | |
| (12) Snap pin | (27) Spring S | |
| (13) Brake pedal pad | (28) Bushing S | |
| (14) Brake pedal | (29) O-ring | |
| (15) Clevis pin | (30) Clip | |

Tightening torque: N·m (kg·m, ft·lb)

T1: 8±2 (0.8±0.2, 5.8±1.4)

T2: 18±5 (1.8±0.5, 13.0±3.6)

B: AT MODEL



B4M0738C

- | | | |
|------------------------------|--------------------------|-------------------------|
| (1) Accelerator pedal | (11) Accelerator stopper | (21) Brake pedal |
| (2) Bushing | (12) Clip | (22) Clevis pin |
| (3) Holder | (13) Accelerator plate | (23) Brake pedal spring |
| (4) Accelerator bracket | (14) Plug | |
| (5) Stopper | (15) Pedal bracket | |
| (6) Clip | (16) Stop light switch | |
| (7) Accelerator spring | (17) Spacer | |
| (8) Accelerator pedal spring | (18) Stopper | |
| (9) Spring pin | (19) Snap pin | |
| (10) Accelerator pedal pad | (20) Brake pedal pad | |

Tightening torque: N·m (kg·m, ft·lb)

T1: 8±2 (0.8±0.2, 5.8±1.4)

T2: 18±5 (1.8±0.5, 13.0±3.6)

T3: 29±7 (3.0±0.7, 21.7±5.1)