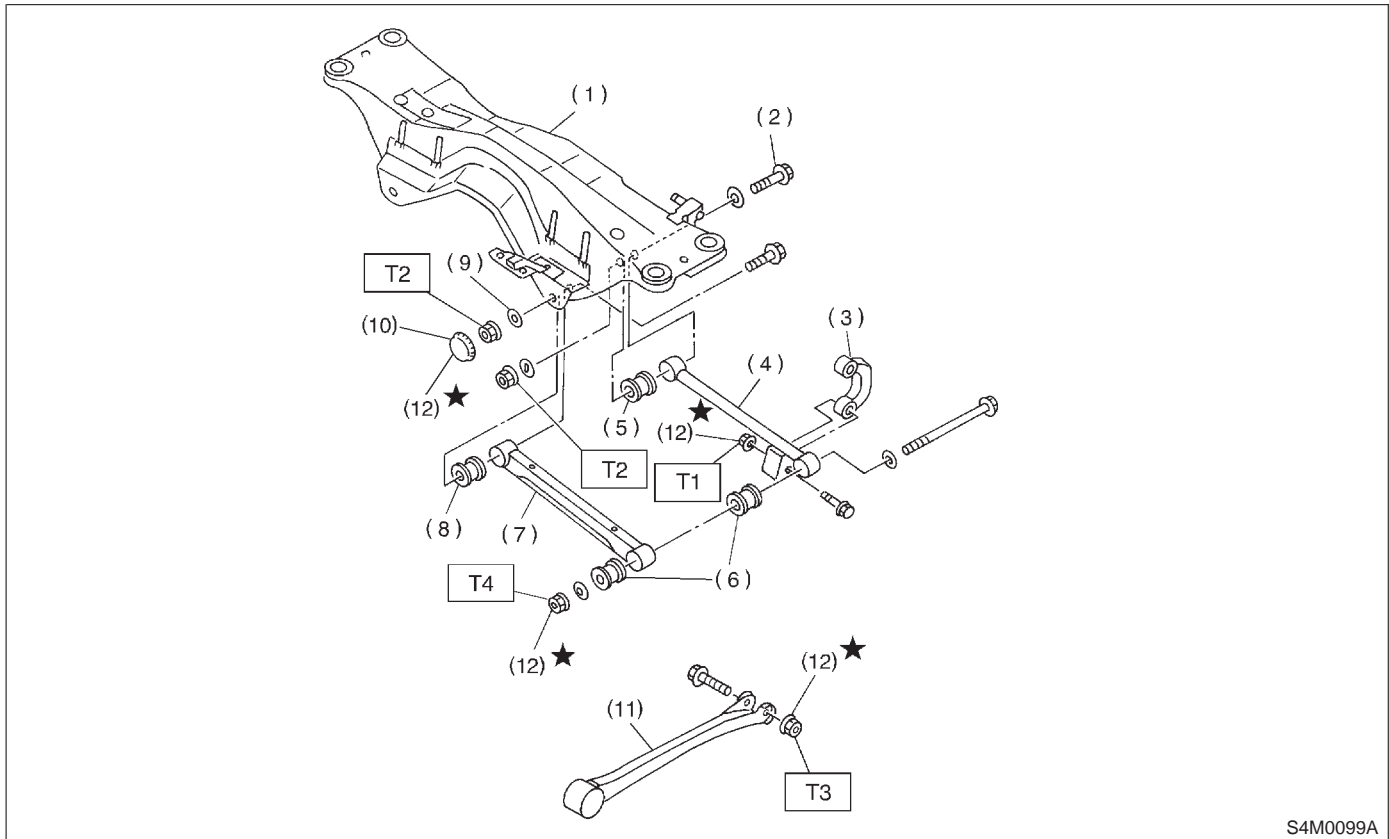


## 8. Lateral Link

### A: REMOVAL



S4M0099A

- |                        |                       |
|------------------------|-----------------------|
| (1) Crossmember        | (8) Bushing (B)       |
| (2) Adjusting bolt     | (9) Washer            |
| (3) Stabilizer link    | (10) Cap (Protection) |
| (4) Rear lateral link  | (11) Trailing link    |
| (5) Bushing (C)        | (12) Self-locking nut |
| (6) Bushing (A)        |                       |
| (7) Front lateral link |                       |

**Tightening torque: N·m (kg·m, ft·lb)**

**T1: 44±6 (4.5±0.6, 32.5±4.3)**

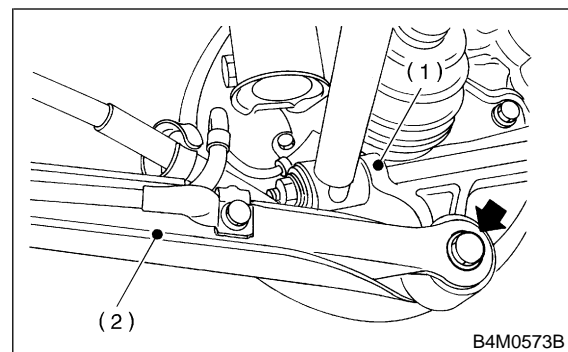
**T2: 98±15 (10.0±1.5, 72±11)**

**T3: 113±15 (11.5±1.5, 83±11)**

**T4: 137±20 (14.0±2.0, 101±14)**

- 1) Loosen wheel nuts. Jack-up vehicle and remove wheel.
- 2) Remove stabilizers.
- 3) Remove ABS sensor harness from trailing link.

- 4) Remove bolt securing trailing link to housing.



B4M0573B

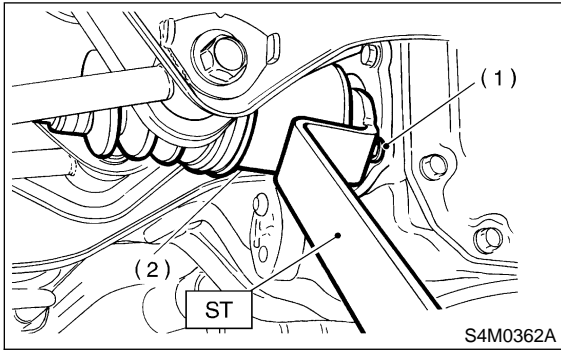
- (1) Rear housing
- (2) Trailing link

- 5) Remove bolts which secure lateral link assembly to rear housing.

6) Remove DOJ from rear differential using ST.  
ST 28099PA100 DRIVE SHAFT REMOVER

**NOTE:**

The side spline shaft circlip comes out together with the shaft.



- (1) Bolt
- (2) DOJ

**CAUTION:**

Be careful not to damage side bearing retainer. Always use bolt as shown in figure, as supporting point for ST during removal.

7) Scribe an alignment mark on rear lateral link adjusting bolt and crossmember.

8) Remove bolts securing front and rear lateral links to crossmember, detach lateral links.

**CAUTION:**

To loosen adjusting bolt, always loosen nut while holding the head of adjusting bolt.

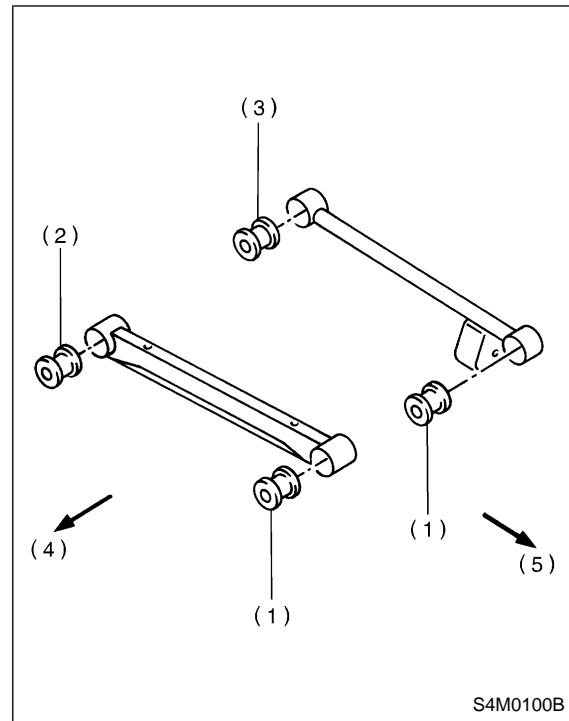
**B: DISASSEMBLY**

Using ST, press bushing out of place.

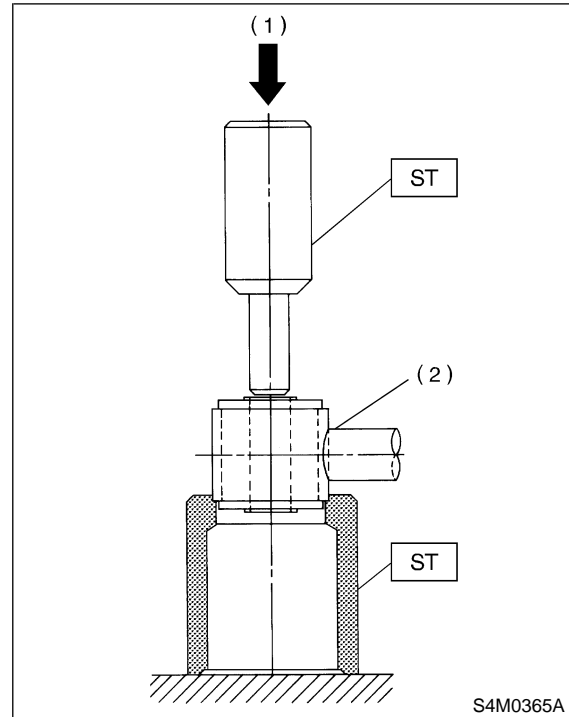
**NOTE:**

- Using the following table as a guide, verify the type of bushings.
- Select ST according to the type of bushings used.

Bushing	ST: INSTALLER & REMOVER SET
Bushing A	927700000
Bushing B	927690000
Bushing C	927700000



- (1) Bushing A
- (2) Bushing B
- (3) Bushing C
- (4) Front
- (5) Outside of body



- (1) Press
- (2) Lateral link

**C: INSPECTION**

Visually check lateral links for damage or bends.

**D: ASSEMBLY**

1) Using ST, press bushing into place.

**CAUTION:**

Select ST according to the type of bushings used.

**NOTE:**

- Use the same ST as that used during disassembly.
- If it is difficult to press bushing into trailing link, apply water-diluted TIRE LUBE to the inner surface of ST as a lubricant.

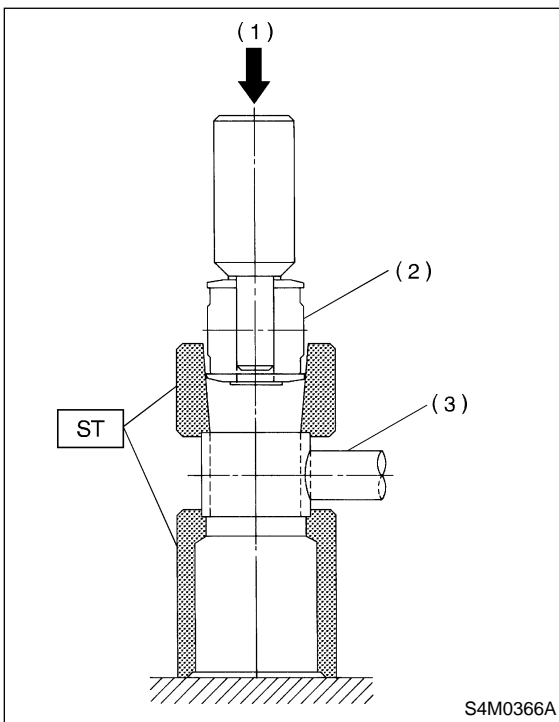
**Specified lubricant:**

**TIRE LUBE : water = 1 : 3**

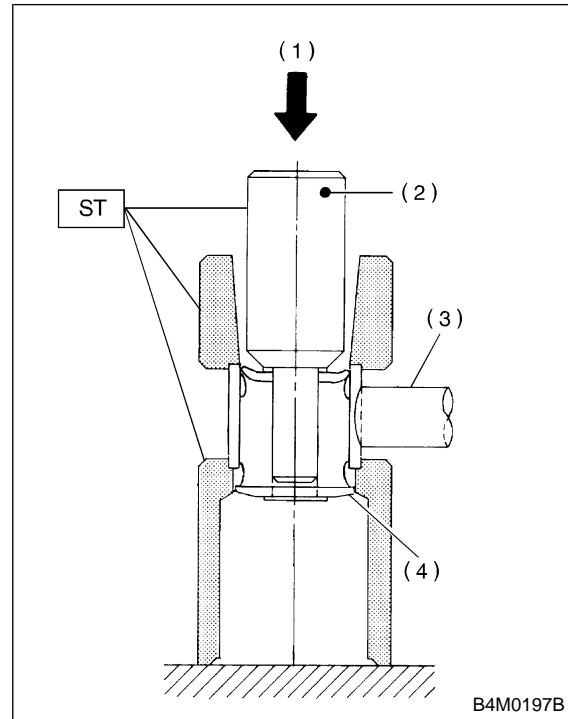
2) Press ST plunger until bushing flange protrudes beyond lateral link.

**NOTE:**

Use the same ST as that used during disassembly.



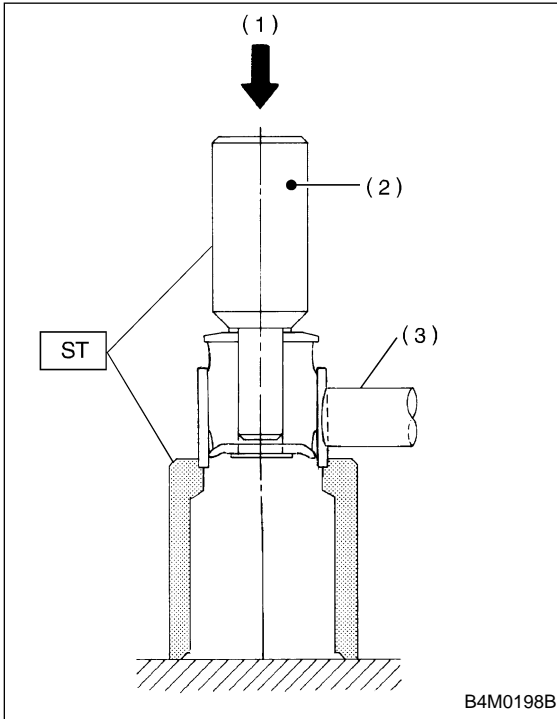
- (1) Press
- (2) Bushing
- (3) Lateral link



- (1) Press
- (2) Plunger
- (3) Lateral link
- (4) Flange

3) Turn lateral link upside down. Press ST plunger in the direction opposite that outlined in the former procedure until bushing is correctly positioned in trailing link.

NOTE:  
Use the same ST as that used during disassembly.



- (1) Press
- (2) Plunger
- (3) Lateral link

## E: INSTALLATION

Install in the reverse order of removal, observing the following instructions.

NOTE:  
Installation of DOJ to differential; <Ref. to 4-2 [W3E2].>

### CAUTION:

- Always tighten rubber bushing when wheels are in full contact with the ground and vehicle is curb weight.
- Tighten nut when installing adjusting bolt.
- Replace self-locking nut.

NOTE:  
Check wheel alignment and adjust if necessary.