

5. Replacement of Rear DOJ and BJ Boots

A: REMOVAL

- 1) Disconnect ground cable from battery.
- 2) Lift-up vehicle, and remove rear wheel cap and wheels.

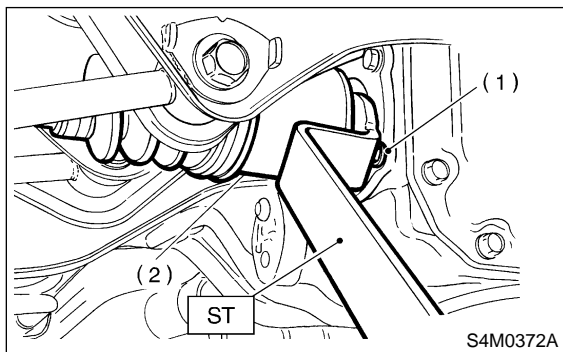
NOTE:

Axle nut need not be removed.

- 3) Remove ABS sensor clamps and parking brake cable bracket.
 - 4) Disconnect stabilizer link from lateral link.
 - 5) Remove bolts which secure lateral link assembly to rear housing.
 - 6) Remove bolts which secure trailing link assembly to rear housing.
 - 7) Remove DOJ from rear differential using ST.
- ST 28099PA100 DRIVE SHAFT REMOVER

NOTE:

The side spline shaft circlip comes out together with the shaft.

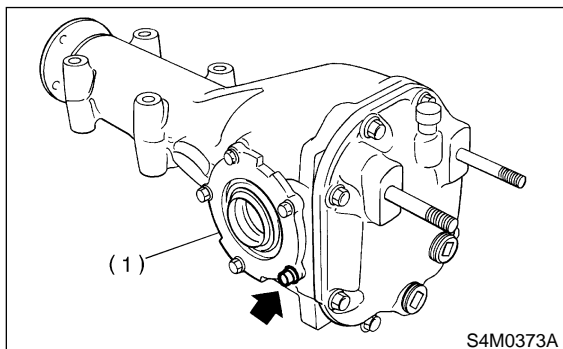


- (1) Bolt
- (2) DOJ

CAUTION:

Be careful not to damage side bearing retainer. Always use bolt as shown in figure, as supporting point for ST during removal.

ST 28099PA100 DRIVE SHAFT REMOVER



- (1) Side bearing retainer

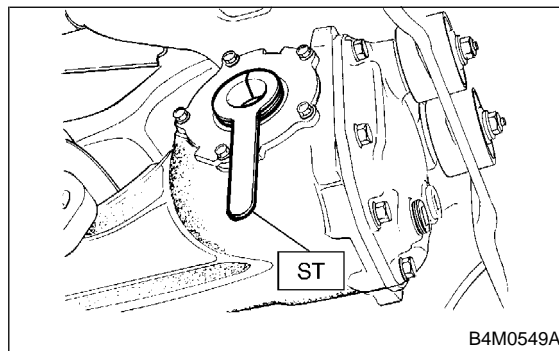
- 8) Remove DOJ and BJ boots from drive shaft. <Ref. to 4-2 [W3B2].>

B: INSTALLATION

- 1) Install DOJ and BJ boots to drive shaft. <Ref. to 4-2 [W3D2].>

- 2) Using ST, install DOJ into differential.

ST 28099PA090 SIDE OIL SEAL PROTECTOR

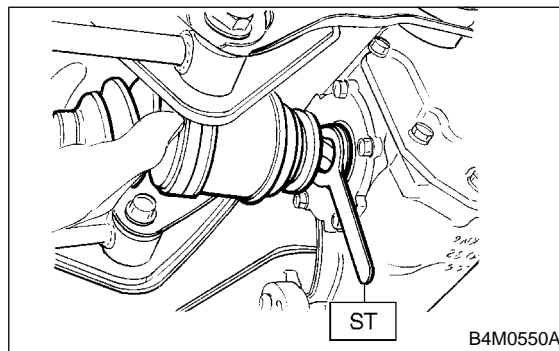


- 3) Insert DOJ spline end into bore of side oil seal, and remove ST.

CAUTION:

Do not allow DOJ splines to damage side oil seal.

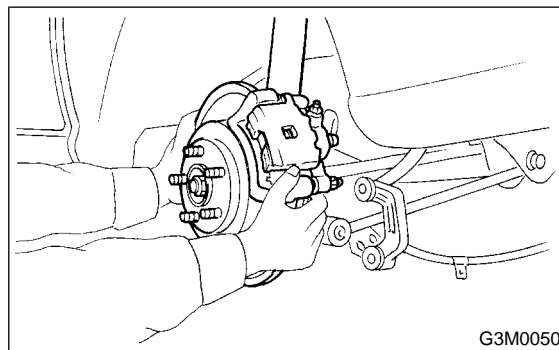
ST 28099PA090 SIDE OIL SEAL PROTECTOR



- 4) Align DOJ and differential splines.
- 5) Push housing to insert DOJ into differential.

NOTE:

Make sure DOJ is inserted properly.



CAUTION:

Discard old self-locking nut. Replace with a new one.

- 6) Connect rear housing assembly to trailing link assembly, and tighten self-locking nut.
- 7) Connect rear housing assembly to lateral link assembly, and tighten self-locking nut.
- 8) Connect stabilizer link to lateral link.
- 9) Install ABS sensor clamps and parking brake cable bracket.

6. Steel Wheel and Tire

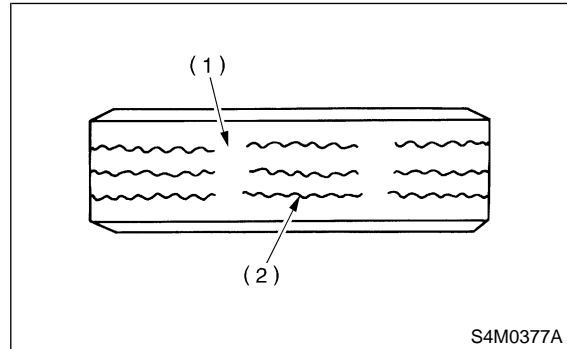
A: INSPECTION

- 1) Deformation or damage on the rim can cause air leakage. Check the rim flange for deformation, crack, or damage, and repair or replace as necessary.
- 2) Take stone, glass, nail etc. off the tread groove.
- 3) Replace tire:

CAUTION:

- When replacing a tire, make sure to use only the same size, construction and load range as originally installed.
- Avoid mixing radial, belted bias or bias tires on the vehicle.

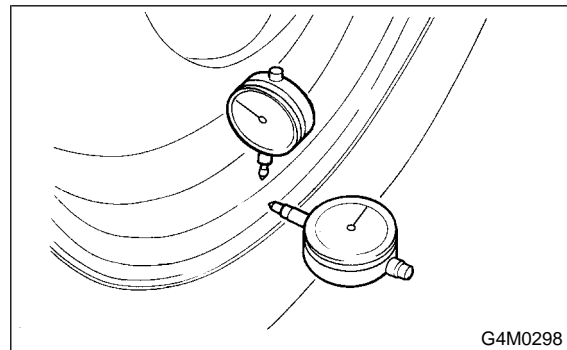
- (1) when large crack on side wall, damage or crack on tread is found.
- (2) when the “tread wear indicator” appears as a solid band across the tread.



- (1) Tread wear indicator
- (2) Tire tread

1. INSPECTION OF WHEEL RUNOUT

- 1) Jack-up vehicle until wheels clear the floor.
- 2) Slowly rotate wheel to check rim “runout” using a dial gauge.



	Axial runout limit	Radial runout limit
Steel wheel	1.5 mm (0.059 in)	
Aluminum wheel	1.0 mm (0.039 in)	