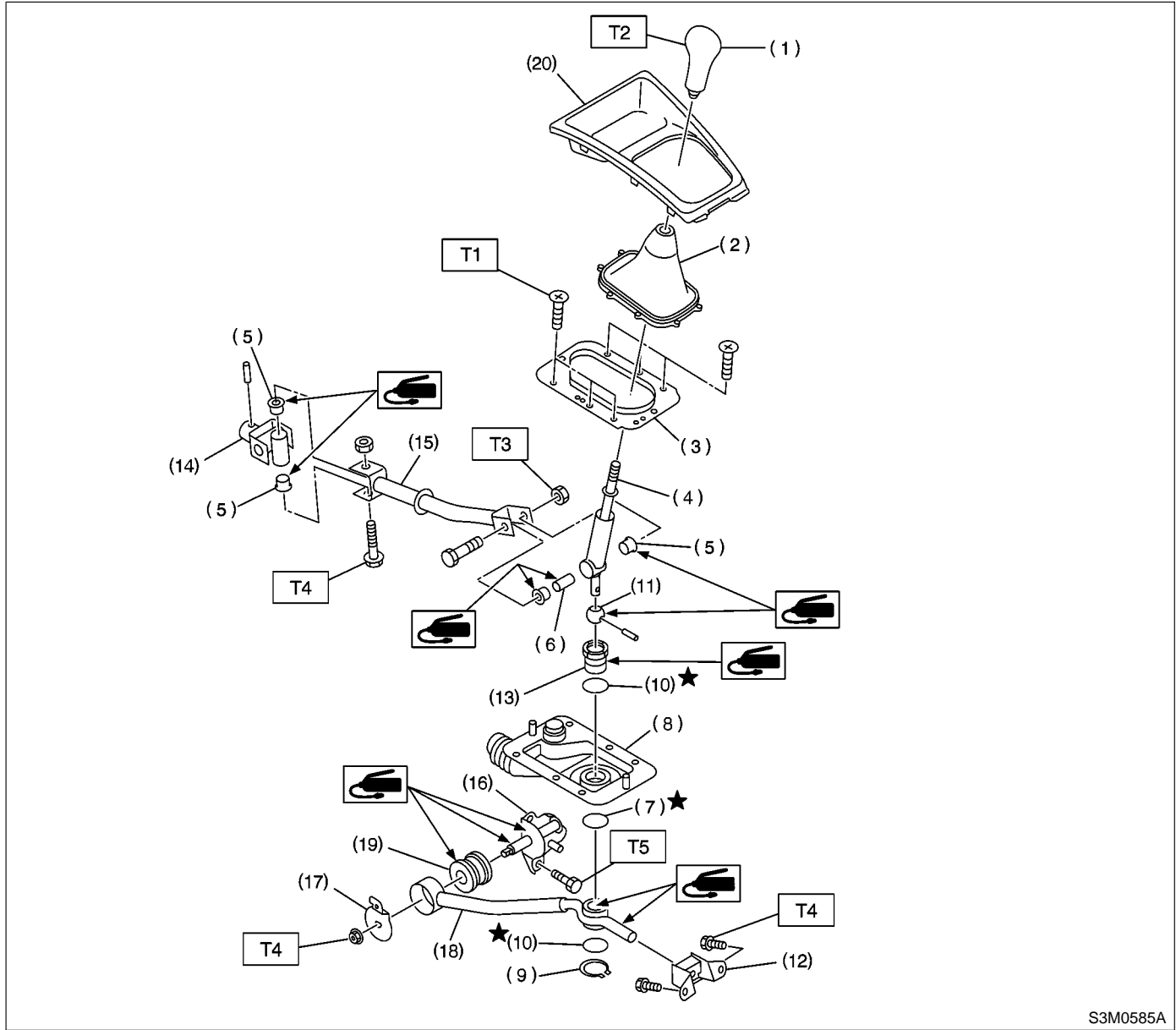


1. Gear Shift Lever



S3M0585A

- | | |
|---------------------|---------------------|
| (1) Gear shift knob | (11) Bush C |
| (2) Console boot | (12) Cushion rubber |
| (3) Boot plate | (13) Bush D |
| (4) Lever | (14) Joint |
| (5) Bush A | (15) Rod |
| (6) Spacer | (16) Bracket |
| (7) Locking wire | (17) Washer |
| (8) Boot | (18) Stay |
| (9) Snap ring | (19) Bush B |
| (10) O-ring | (20) Front cover |

Tightening torque: N-m (kg-m, ft-lb)

T1: 4.5±1.5 (0.46±0.15, 3.3±1.1)

T2: 5 (0.51, 3.7)

T3: 12±3 (1.2±0.3, 8.7±2.2)

T4: 18±5 (1.8±0.5, 13.0±3.6)

T5: 24.5±2

(2.50±0.20, 18.07±1.48)