

SUPPLEMENTAL RESTRAINT SYSTEM

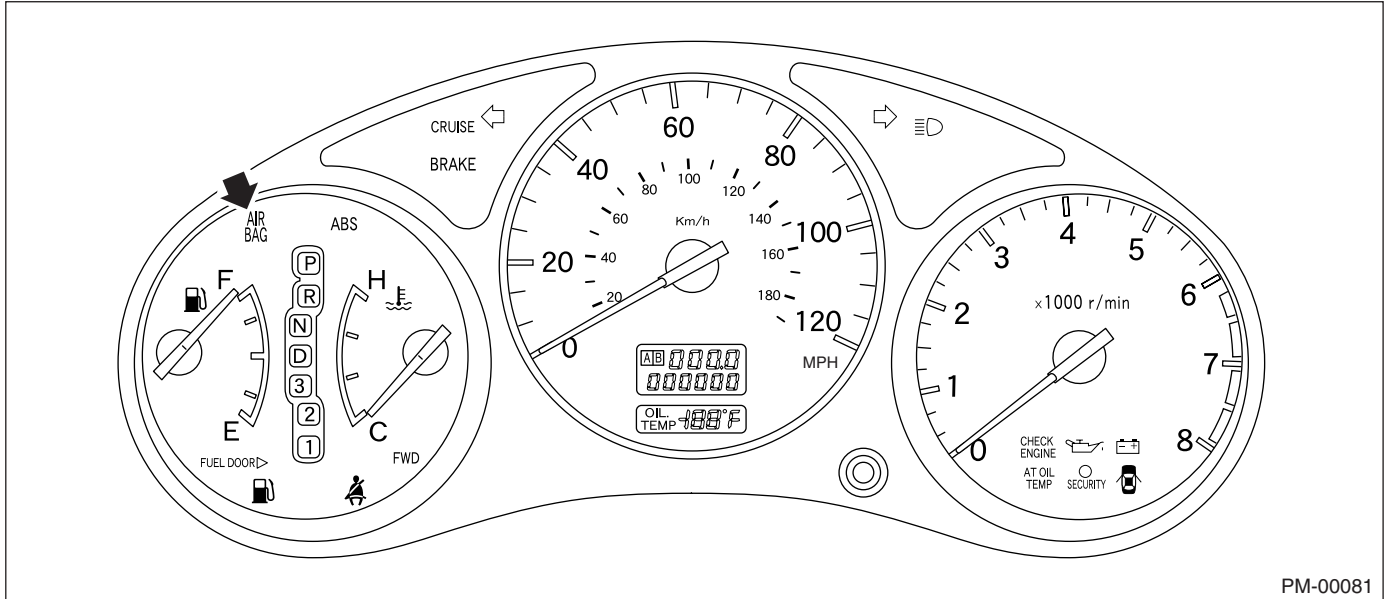
PERIODIC MAINTENANCE SERVICES

27. Supplemental Restraint System

A: INSPECTION

Check the airbag system in accordance with the result of the self-diagnosis. <Ref. to AB-2, Basic Diagnostic Procedure.>

1) Ensure that airbag connectors are connected. If not, properly connect. When the ignition switch is turned ON with the connector(s) disconnected, the airbag warning light blinks to identify the fault.



2) Turn the ignition switch to ON, and connect the airbag diagnosis terminal of the service connector (located below lower cover) to ground terminal.

3) The warning light blinks to indicate a DTC (a fault is identified). When the airbag system is in good order (no trouble codes are stored in the memory), the warning light blinks on and off at 0.6 seconds intervals (as long as the diagnosis terminal is connected to ground terminal).

4) When the warning light indicates a DTC, check the airbag system in accordance with the troubleshooting procedure. <Ref. to AB-2, Basic Diagnostic Procedure.>