

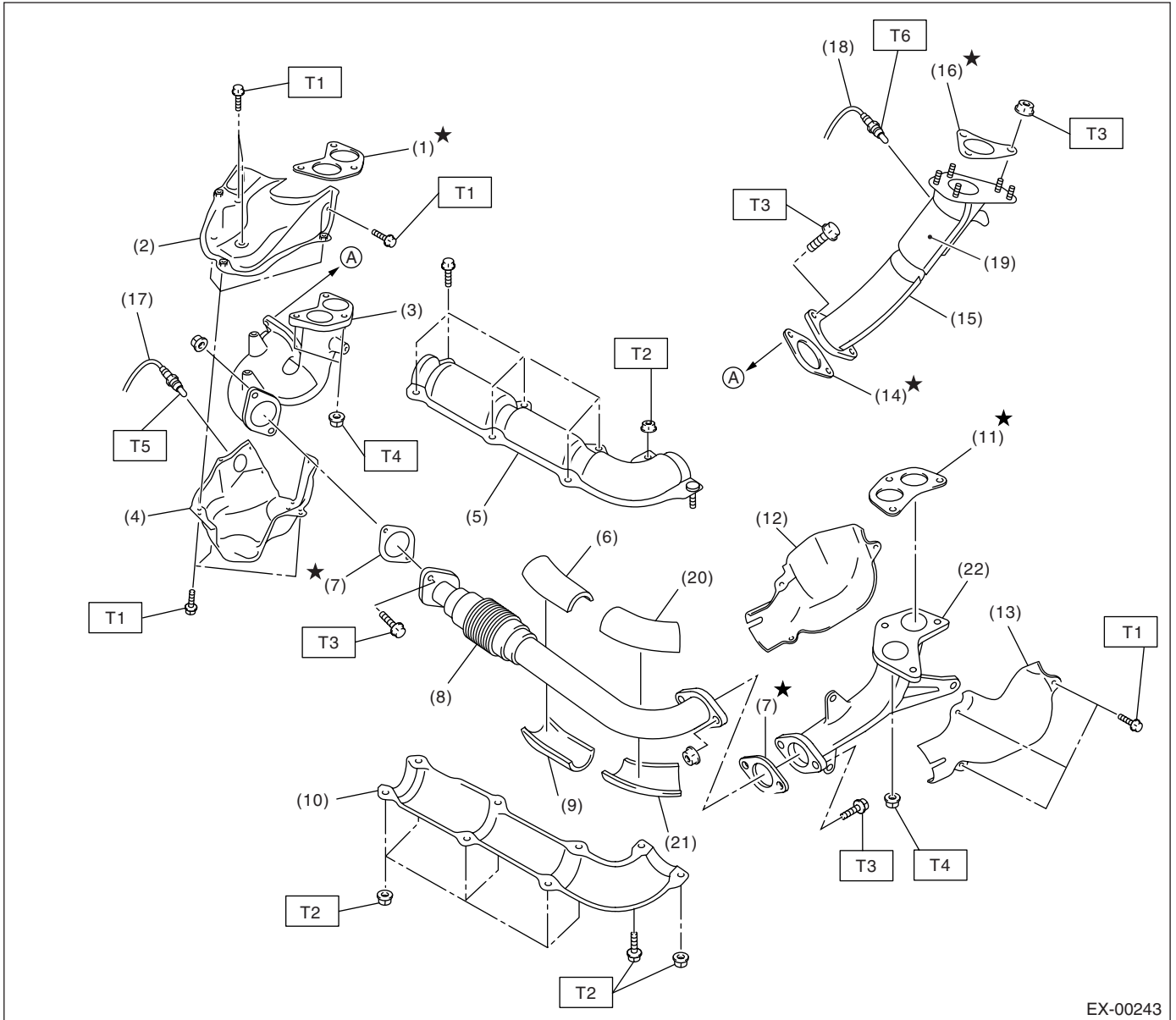
# GENERAL DESCRIPTION

EXHAUST

## 1. General Description

A: COMPONENT

### 1. FRONT EXHAUST PIPE



EX-00243

# GENERAL DESCRIPTION

EXHAUST

---

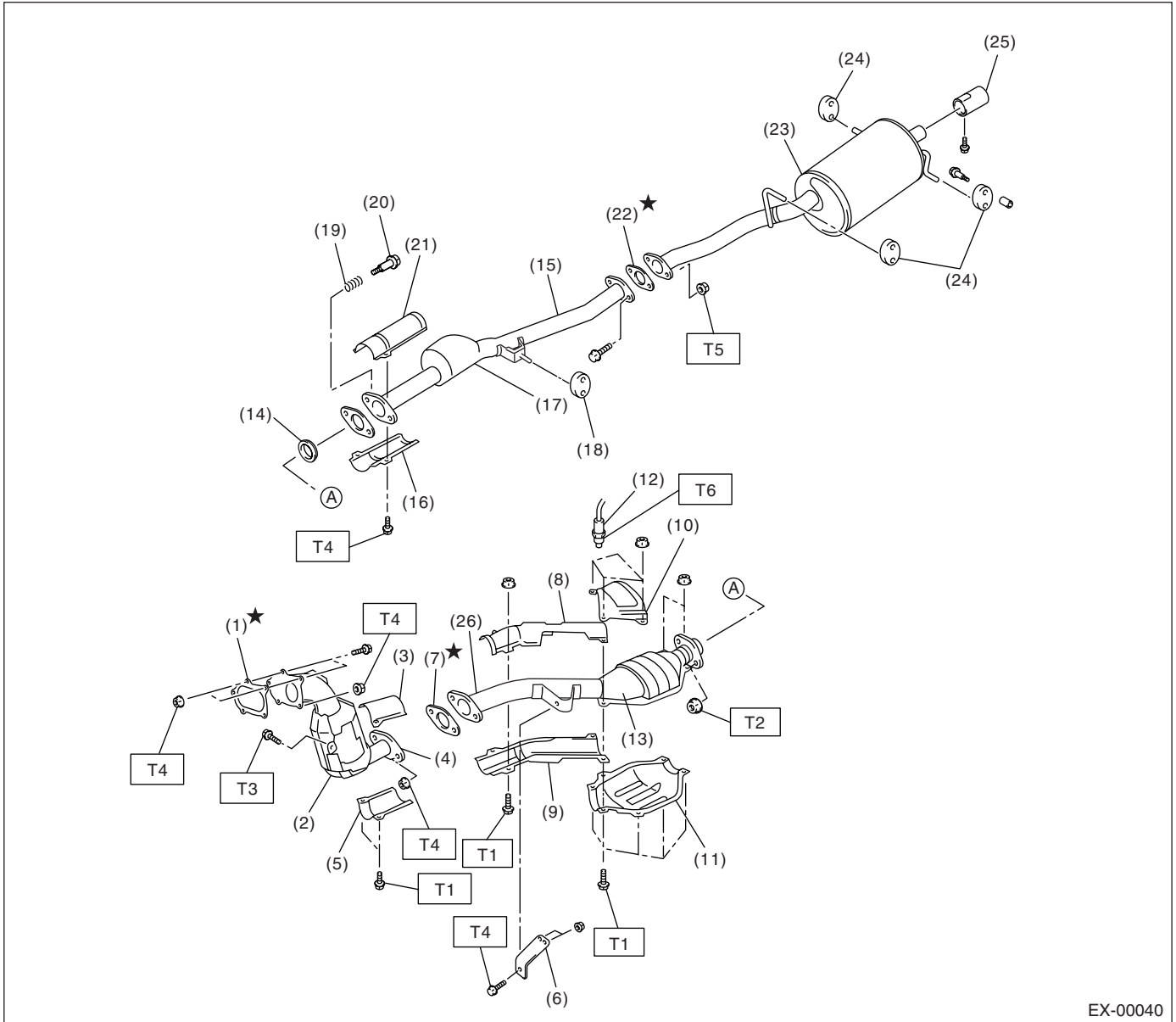
(1) Gasket	(12) Upper exhaust manifold cover (LH)	<b>Tightening torque: N-m (kgf-m, ft-lb)</b> <b>T1: 19 (1.9, 13.7)</b> <b>T2: 7.5 (0.8, 5.5)</b> <b>T3: 35 (3.6, 26.0)</b> <b>T4: 40 (4, 28.9)</b> <b>T5: &lt;Ref. to FU(H4DOTC)-38, INSTALLATION, Front Oxygen (A/F) Sensor.&gt;</b> <b>T6: &lt;Ref. to FU(H4DOTC)-41, INSTALLATION, Exhaust Temperature Sensor.&gt;</b>
(2) Upper exhaust manifold cover (RH)	(13) Lower exhaust manifold cover (LH)	
(3) Exhaust manifold (RH)	(14) Gasket	
(4) Lower exhaust manifold cover (RH)	(15) Turbocharger joint pipe	
(5) Front exhaust pipe upper cover	(16) Gasket	
(6) Front exhaust pipe upper insulator (RH)	(17) Front oxygen (A/F) sensor	
(7) Gasket	(18) Exhaust temperature sensor	
(8) Front exhaust pipe	(19) Precatalytic converter	
(9) Front exhaust pipe lower insulator (RH)	(20) Front exhaust pipe upper insulator (LH)	
(10) Front exhaust pipe lower cover	(21) Front exhaust pipe lower insulator (LH)	
(11) Gasket	(22) Exhaust manifold (LH)	

---

# GENERAL DESCRIPTION

## EXHAUST

### 2. CENTER AND REAR EXHAUST PIPE, AND MUFFLER



EX-00040

- |   |  |
|---|--|
| (1) Gasket                                | (14) Gasket                                |
| (2) Front catalytic converter             | (15) Rear exhaust pipe                     |
| (3) Upper center pipe cover (Front)       | (16) Lower rear exhaust pipe cover (Front) |
| (4) Center exhaust pipe (Front)           | (17) Chamber                               |
| (5) Lower center pipe cover (Front)       | (18) Cushion                               |
| (6) Bracket                               | (19) Spring                                |
| (7) Gasket                                | (20) Bolt                                  |
| (8) Upper center pipe cover (Rear)        | (21) Upper rear exhaust pipe cover (Front) |
| (9) Lower center pipe cover (Rear)        | (22) Gasket                                |
| (10) Upper rear catalytic converter cover | (23) Muffler                               |
| (11) Lower rear catalytic converter cover | (24) Cushion                               |
| (12) Rear oxygen sensor                   | (25) Muffler cutter                        |
| (13) Rear catalytic converter             | (26) Center exhaust pipe (Rear)            |

#### **Tightening torque: N·m (kgf·m, ft·lb)**

**T1: 13 (1.3, 9.6)**

**T2: 18 (1.8, 13.0)**

**T3: 30 (3.1, 22.4)**

**T4: 35 (3.6, 26.0)**

**T5: 48 (4.9, 35.4)**

**T6: <Ref. to FU(H4DOTC)-39, INSTALLATION, Rear Oxygen Sensor.>**

## **B: CAUTION**

- Wear working clothing, including a cap, protective goggles, and protective shoes during operation.
- Remove contamination including dirt and corrosion before removal, installation or disassembly.
- Keep the disassembled parts in order and protect them from dust or dirt.
- Before removal, installation or disassembly, be sure to clarify the failure. Avoid unnecessary removal, installation, disassembly, and replacement.
- Be careful not to burn your hands, because each part on the vehicle is hot after running.
- Be sure to tighten fasteners including bolts and nuts to the specified torque.
- Place shop jacks or safety stands at the specified points.
- Before disconnecting electrical connectors of sensors or units, be sure to disconnect the ground cable from battery.