

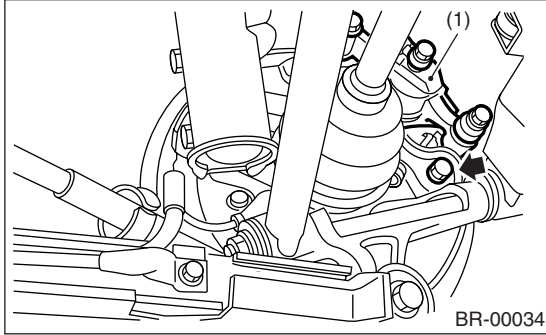
PARKING BRAKE ASSEMBLY (REAR DISC BRAKE)

PARKING BRAKE

4. Parking Brake Assembly (Rear Disc Brake)

A: REMOVAL

- 1) Pull down and release the parking brake.
- 2) Remove the two mounting bolts and remove the brake caliper assembly.



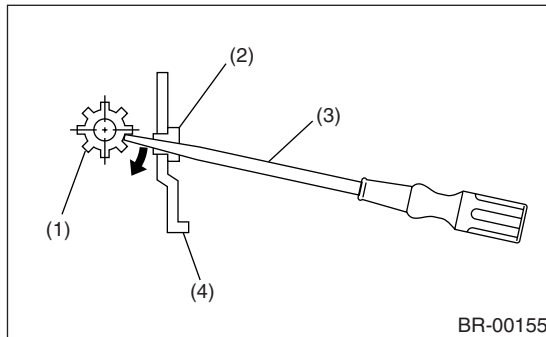
(1) Brake caliper assembly

- 3) Suspend the disc brake assembly so that the hose is not stretched.
- 4) Remove the disc rotor.

NOTE:

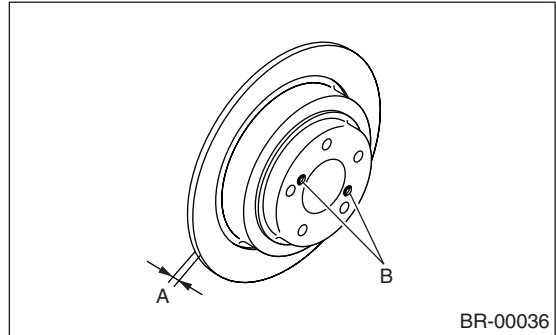
If the disc rotor is difficult to remove, try the following two methods in order.

- (1) Turn the adjusting screw using a flat tip screwdriver until brake shoe gets away enough from the disc rotor.

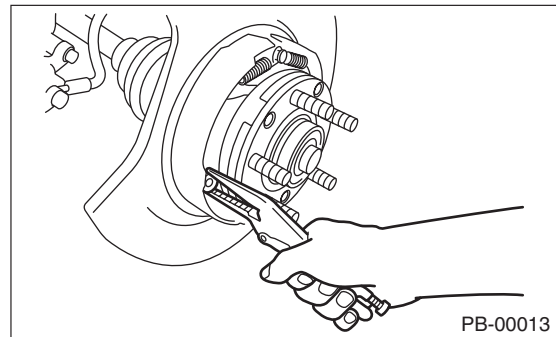


- (1) Adjusting screw
- (2) Adjusting hole cover (rubber)
- (3) Flat tip screwdriver
- (4) Back plate

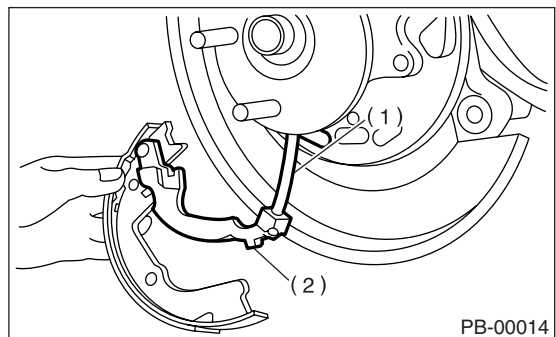
- (2) If the disc rotor seizes up within hub, drive the disc rotor out by installing two 8-mm (0.31-in) bolt in holes B on rotor.



- 5) Remove the shoe return spring from parking brake assembly.
- 6) Remove the front shoe hold down spring and pin with pliers.



- 7) Remove the strut and strut spring.
- 8) Remove the adjuster assembly from parking brake assembly.
- 9) Remove the brake shoe.
- 10) Remove the rear shoe hold-down spring and pin with pliers.
- 11) Remove the parking brake cable from parking brake lever.



- (1) Parking brake cable
- (2) Parking brake lever

- 12) Using a standard screwdriver, raise the retain-er. Remove the parking brake lever and washer from brake shoe.

B: INSTALLATION

CAUTION:

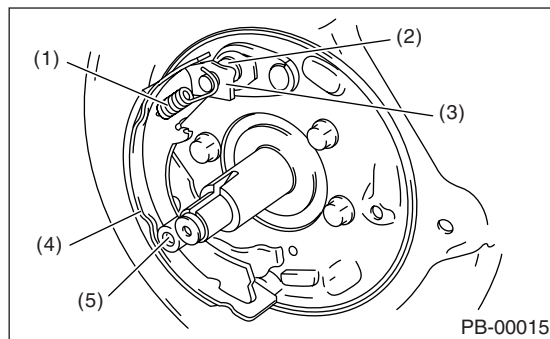
Be sure the lining surface is free from oil and grease contamination.

1) Apply brake grease to the following places.

Brake grease:

Brake Grease (Part No. 003602002)

- Six contact surfaces of shoe rim and back plate packing
 - Contact surface of shoe wave and anchor pin
 - Contact surface of lever and strut
 - Contact surface of shoe wave and adjuster assembly
 - Contact surface of shoe wave and strut
 - Contact surface of lever and shoe wave
- 2) Insert the primary side brake shoe into anchor pin groove.
- 3) Secure the brake shoe with shoe hold-down pin and cup.
- 4) Install the plate to anchor pin, and then assemble the primary return spring to anchor pin.



- (1) Primary return spring
- (2) Anchor pin
- (3) Plate
- (4) Primary shoe
- (5) Shoe hold-down pin & cup

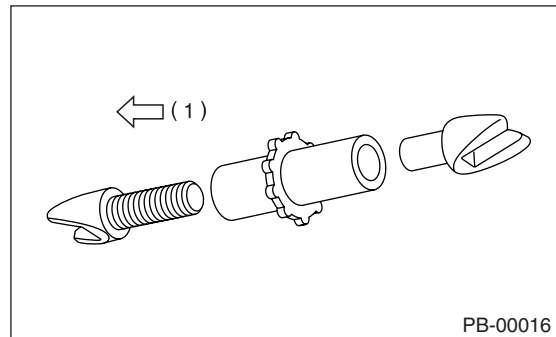
5) Install the parking brake cable to parking brake lever.

6) Assemble the strut and adjuster, and then secure the secondary side brake shoe with shoe hold-down pin & cup.

NOTE:

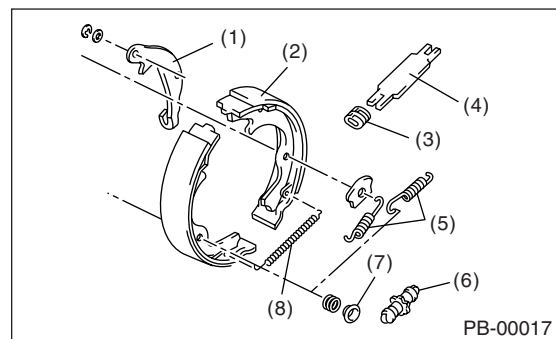
- Install the strut spring of both right and left wheel facing vehicle front.

- Install the adjuster assembly with screw on left side.



- (1) Left

7) Install the secondary return spring and adjusting spring.



- (1) Lever
- (2) Secondary brake shoe
- (3) Strut spring
- (4) Strut
- (5) Secondary return spring
- (6) Adjuster
- (7) Hold-down cup
- (8) Adjusting spring

8) Adjust the parking brakes. <Ref. to PB-10, ADJUSTMENT, Parking Brake Assembly (Rear Disc Brake).>

9) Drive the vehicle for parking brake lining "break-in".

- (1) Drive the vehicle at about 35 km/h (22 MPH).
- (2) With the parking brake release button pushed in, pull the parking brake lever gently.
- (3) Drive the vehicle for about 200 meter (0.12 mile) in this condition.
- (4) Wait 5 to 10 minutes for the parking brake to cool down. Repeat this procedure once more.
- (5) After breaking-in, re-adjust the parking brakes.

PARKING BRAKE ASSEMBLY (REAR DISC BRAKE)

PARKING BRAKE

C: INSPECTION

1) Measure the brake disc rotor inside diameter. If the disc is scored or worn, replace the brake disc rotor.

Disc rotor inside diameter:

Standard

170 mm (6.69 in)

Service limit

171 mm (6.73 in)

2) Measure the lining thickness. If it exceeds the limit, replace the shoe assembly.

Lining thickness:

Standard

3.2 mm (0.126 in)

Service limit

1.5 mm (0.059 in)

NOTE:

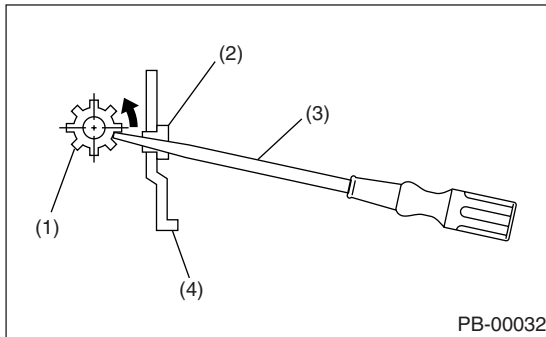
Replace the right and left brake shoe at the same time.

D: ADJUSTMENT

1. SHOE CLEARANCE

1) Remove the adjusting hole cover from back plate.

2) Turn the adjusting screw using a flat tip screwdriver until brake shoe is in close contact with disc rotor.



- (1) Adjusting screw
- (2) Adjusting hold cover (rubber)
- (3) Flat tip screwdriver
- (4) Back plate

3) Turn back (downward) the adjusting screw 3 or 4 notches.

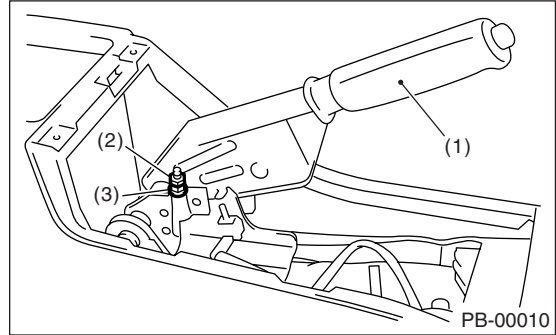
4) Install the adjusting hole cover to back plate.

2. LEVER STROKE

1) Remove the console box lid.

2) Forcibly pull the parking brake lever 3 to 5 times.

3) Adjust the parking brake lever by turning adjuster until parking brake lever stroke is set at 7 to 8 notches with operating force of 196 N (20 kgf, 44 lb).



- (1) Parking brake lever
- (2) Lock nut
- (3) Adjusting nut

4) Tighten the lock nut.

5) Install the console box lid.

Lever stroke:

7 to 8 notches when pulled with a force of 196 N (20 kgf, 44 lb)

Tightening torque (Lock nut):

6 N·m (0.6 kgf·m, 4.3 ft·lb)