

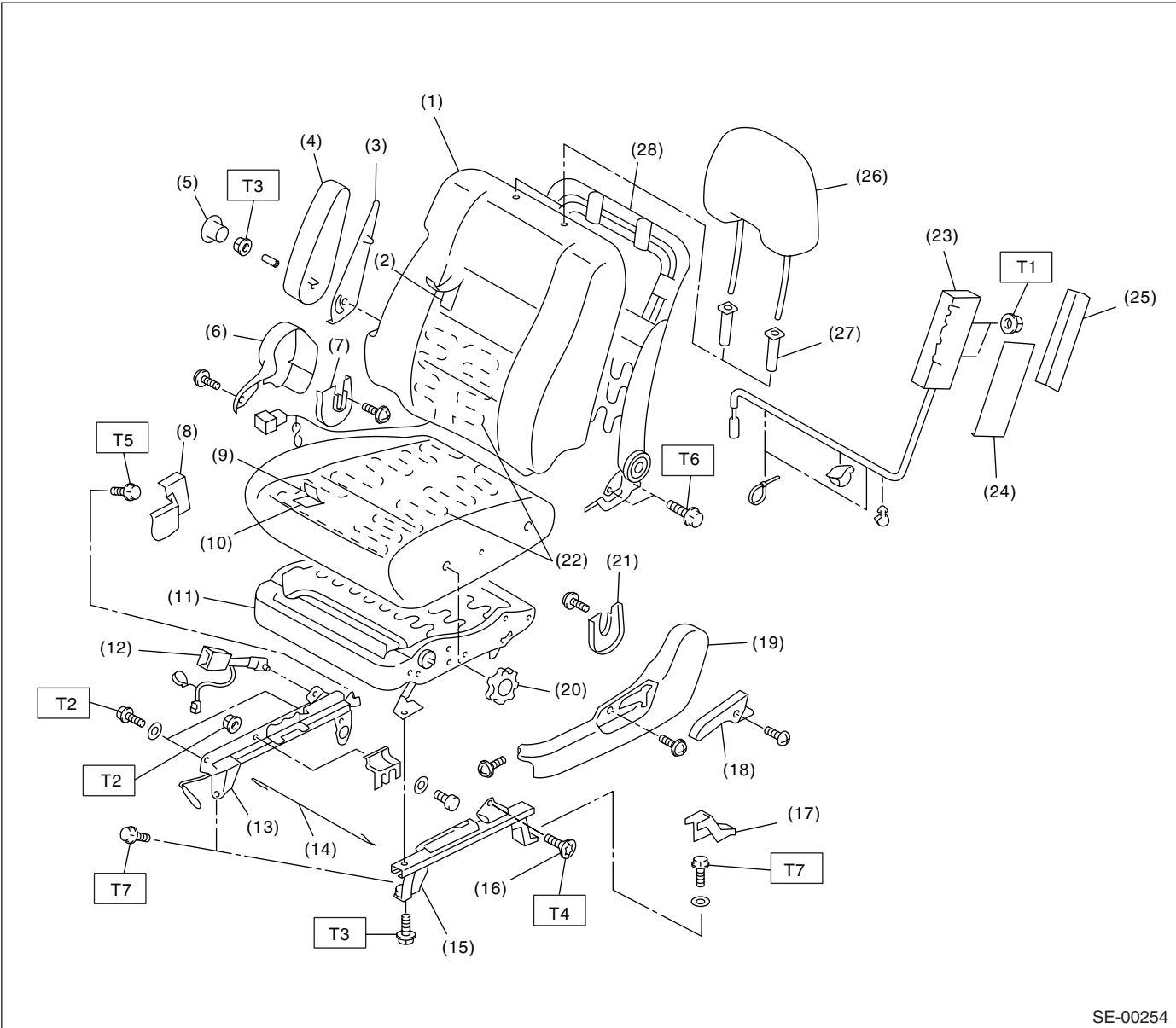
GENERAL DESCRIPTION

SEATS

1. General Description

A: COMPONENT

1. FRONT SEAT



SE-00254

GENERAL DESCRIPTION

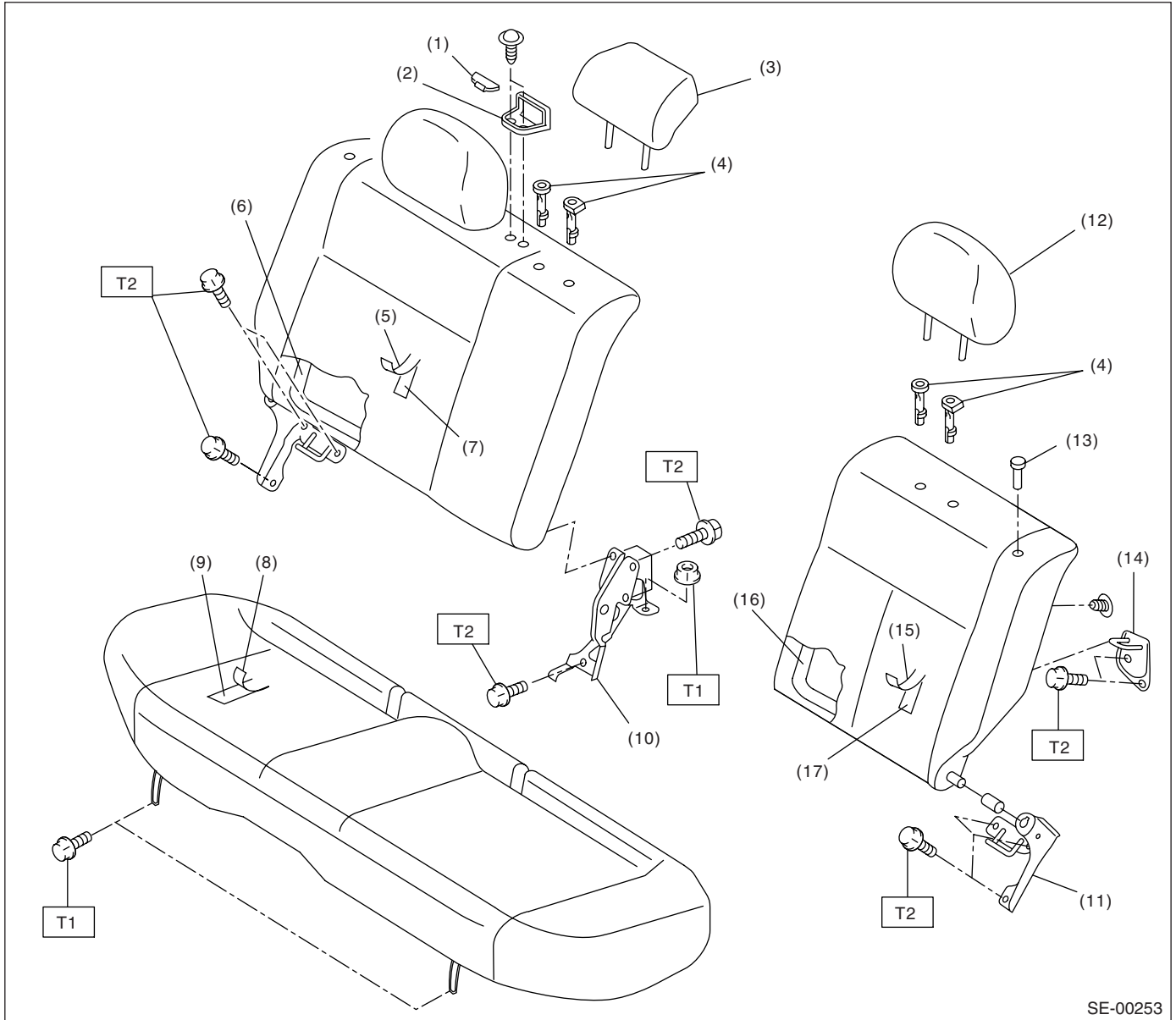
SEATS

(1) Backrest cover	(15) Outer slide rail	<i>Tightening torque: N·m (kgf·m, ft·lb)</i>
(2) Backrest pad	(16) TORX® bolt	<i>T1: 5.9 (0.6, 4.4)</i>
(3) Backrest side cover	(17) Bolt cover RH	<i>T2: 10 (1.0, 7.4)</i>
(4) Armrest ASSY	(18) Reclining lever	<i>T3: 17.7 (1.8, 13.0)</i>
(5) Hinge cover cap	(19) Seat hinge outer cover RH	<i>T4: 20 (2.0, 14.8)</i>
(6) Seat hinge outer cover LH	(20) Seat lifter dial	<i>T5: 30 (3.0, 22.1)</i>
(7) Seat hinge inner cover LH	(21) Seat hinge inner cover RH	<i>T6: 52 (5.3, 38.3)</i>
(8) Bolt cover LH	(22) Seat heater unit	<i>T7: 53 (5.4, 39.0)</i>
(9) Seat cushion cover	(23) Side airbag module ASSY	
(10) Seat cushion pad ASSY	(24) Support pad (A)	
(11) Seat cushion frame ASSY	(25) Support pad (B)	
(12) Inner belt	(26) Headrest ASSY	
(13) Inner slide rail	(27) Headrest lock bush	
(14) Connecting wire	(28) Backrest frame ASSY	

GENERAL DESCRIPTION

SEATS

2. REAR SEAT



SE-00253

- | | |
|---------------------------|-------------------------|
| (1) Webbing guide cap | (10) Hinge CTR |
| (2) Webbing guide | (11) Hinge LH |
| (3) Center pillow | (12) Headrest |
| (4) Headrest free bushing | (13) Rear backrest knob |
| (5) Backrest cover RH | (14) Striker |
| (6) Backrest frame RH | (15) Backrest cover LH |
| (7) Backrest pad | (16) Backrest frame LH |
| (8) Seat cushion cover | (17) Backrest pad LH |
| (9) Seat cushion pad | |

Tightening torque: N·m (kgf·m, ft·lb)

T1: 24.5 (2.5, 18.1)

T2: 33 (3.3, 24.6)

GENERAL DESCRIPTION

SEATS

B: CAUTION

When removing the front seat from a side airbag loaded vehicle, follow cautions given in the airbag section.

C: PREPARATION TOOL

1. GENERAL TOOL

TOOL NAME	REMARKS
Long Nose Pliers	Used for removing hog ring
Hog ring Pliers	Used for installing hog ring
TORX®	Used for removing and installing slide rail