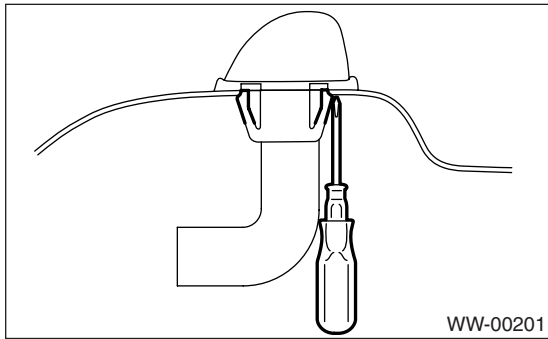


### 11.Rear Washer

#### A: REMOVAL

- 1) Remove the rear gate upper trim. <Ref. to EI-45, REMOVAL, Rear Gate Trim.>
- 2) Remove the washer hose from the washer nozzle.
- 3) Push the anchor portion of washer nozzle with a thin screwdriver or other tool, and remove the washer nozzle.



#### B: INSTALLATION

- 1) Install in the reverse order of removal.
- 2) Adjust the position of the washer liquid sprayer. <Ref. to WW-18, ADJUSTMENT, Rear Washer.>

#### C: INSPECTION

- Make sure the nozzle and hose are not clogged.
- Make sure the hose is not bent.

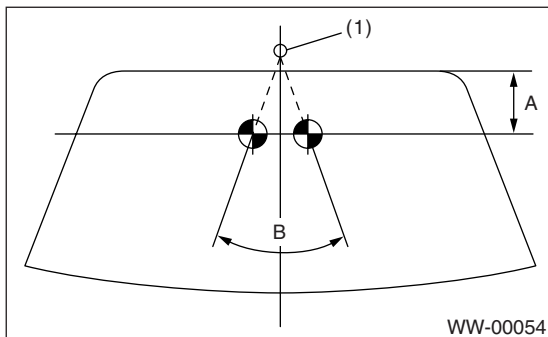
#### D: ADJUSTMENT

- 1) Turn the wiper switch to OFF position.
- 2) When the vehicle stops, adjust the washer injection position as shown in the figure.

#### *Injection position:*

**A: 35 mm (1.38 in)**

**B: 72°**



(1) Nozzle