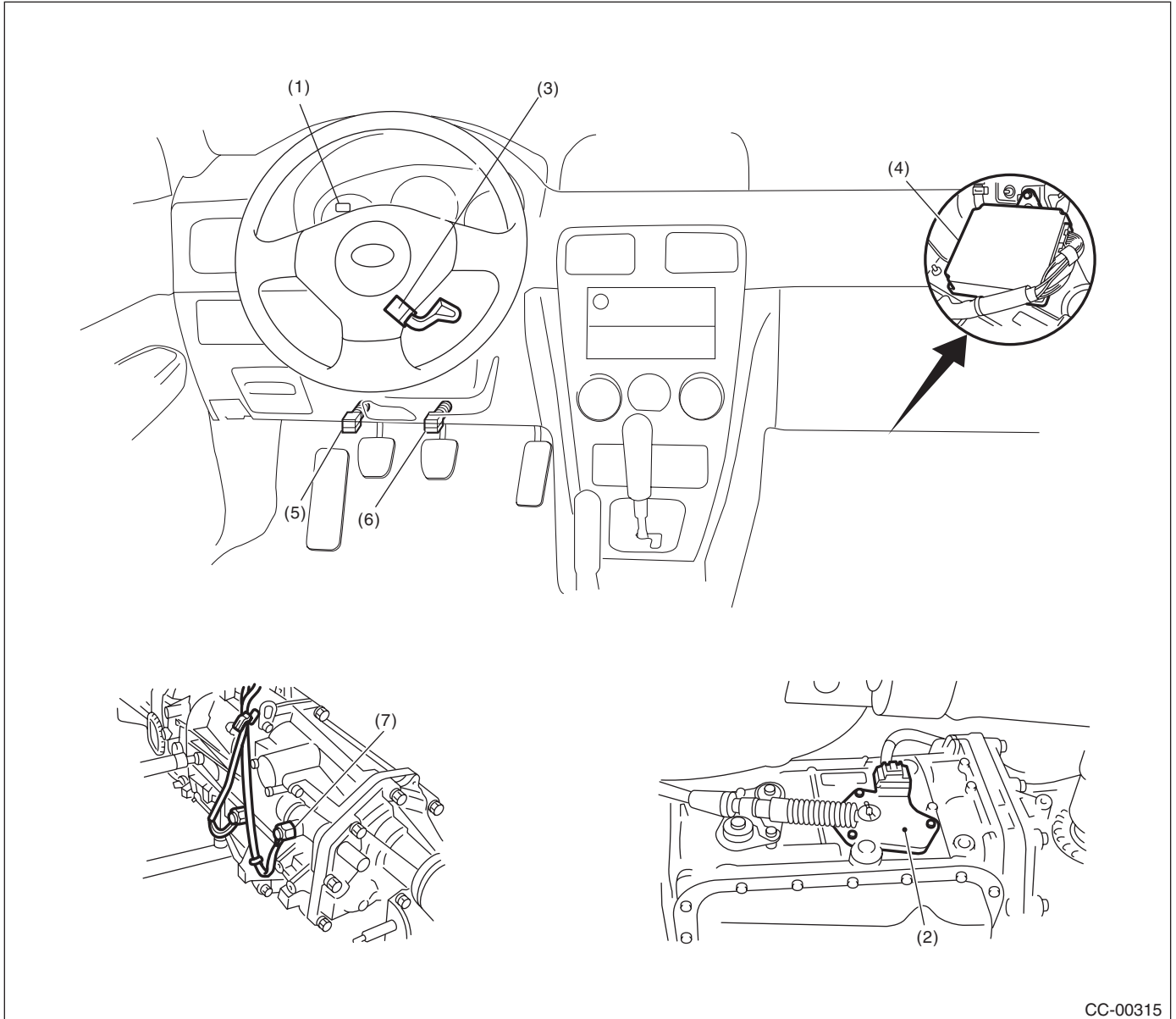


General Description

CRUISE CONTROL SYSTEM

1. General Description

A: COMPONENT



CC-00315

- | | | |
|---|-----------------------------------|--|
| (1) Cruise indicator and cruise set indicator light | (3) Cruise control command switch | (6) Stop light & brake switch |
| (2) Inhibitor switch (AT model) | (4) Engine control module (ECM) | (7) Neutral position switch (MT model) |
| (5) Clutch switch (MT model) | | |

B: CAUTION

- Before disassembling or reassembling parts, always disconnect the battery ground cable from battery. When repairing the radio, control module, etc. which are provided with memory functions, record the memory contents before disconnecting the ground cable from battery. All memory is cleared.
- Reassemble the parts in the reverse order of disassembly unless otherwise indicated.
- Adjust the parts to specifications specified in this manual.
- Connect the connectors and hoses securely during reassembly.
- After reassembly, ensure functional parts operate properly.

C: PREPARATION TOOL

| TOOL NAME | REMARKS |
|----------------|--|
| Circuit tester | Used for measuring resistance and voltage. |
| TORX® bit T30 | Used for removing the cruise control command switch. |