

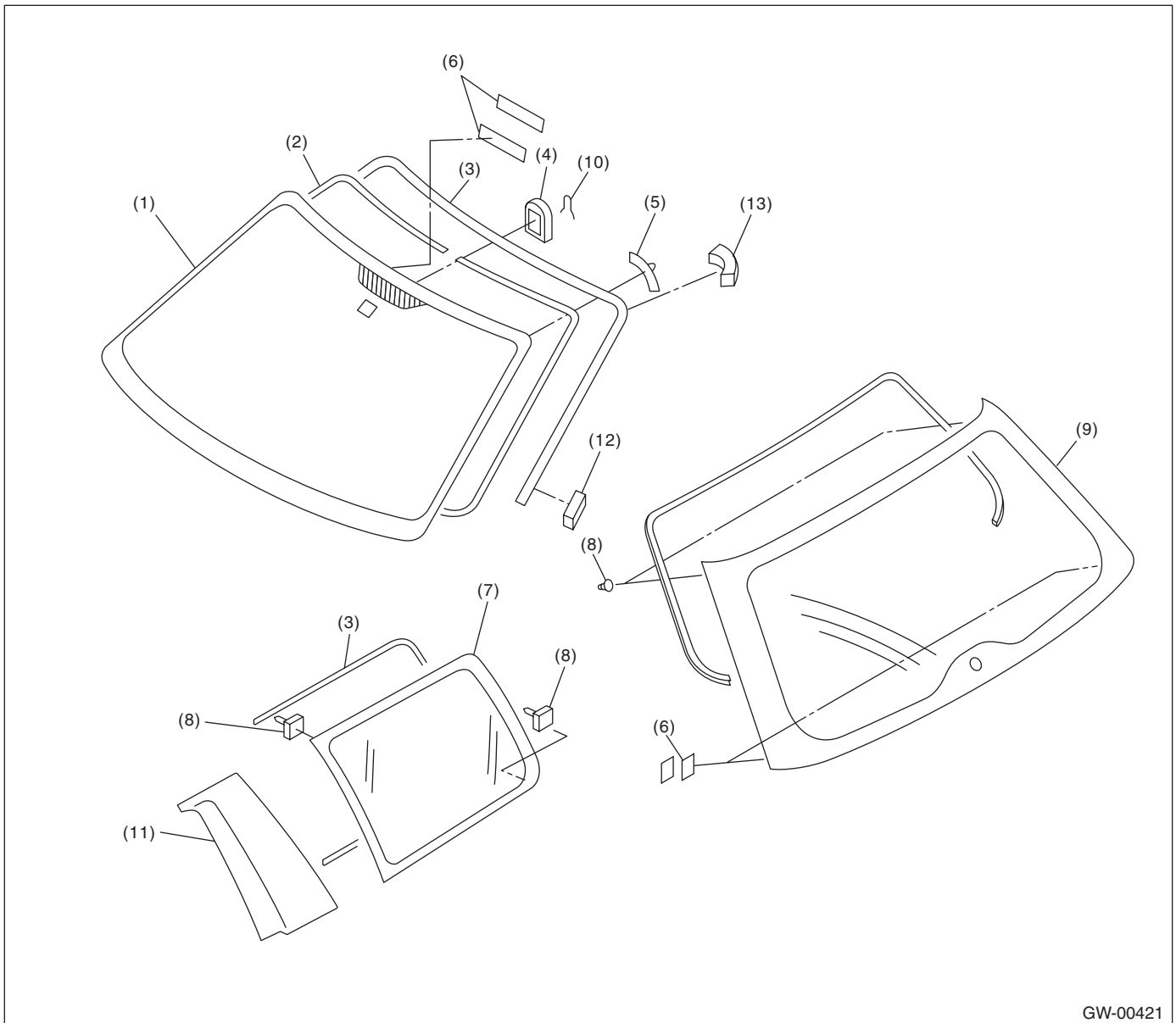
# General Description

GLASS/WINDOWS/MIRRORS

## 1. General Description

### A: COMPONENT

#### 1. FIXED GLASS

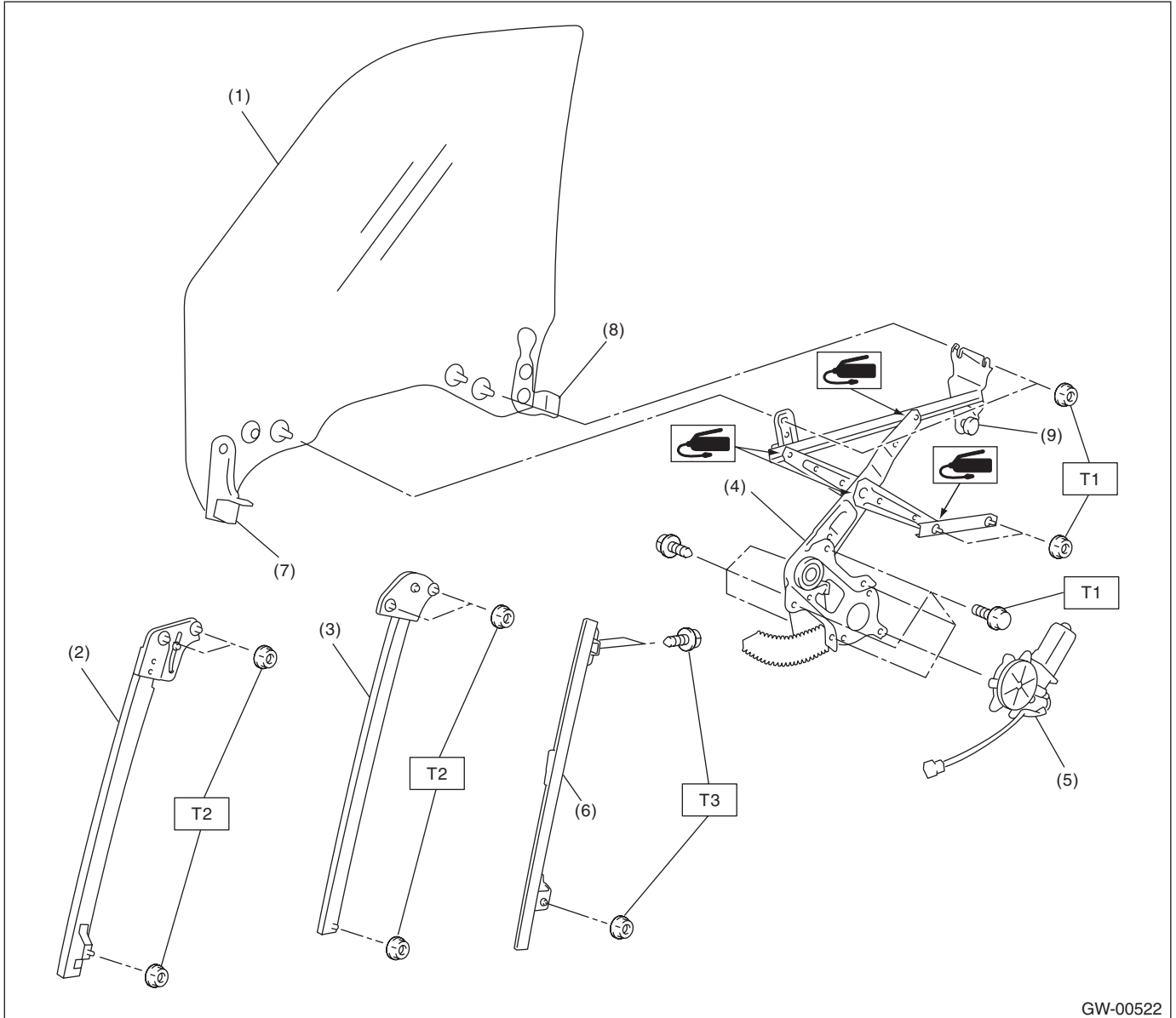


- (1) Windshield glass
- (2) Dam rubber
- (3) Molding
- (4) Rearview mirror mount
- (5) Locating pin

- (6) Fastener
- (7) Rear quarter glass
- (8) Locating pin
- (9) Rear gate glass

- (10) Spring
- (11) Cover C pillar
- (12) Seal A
- (13) Seal B

## 2. FRONT DOOR GLASS



- |                       |                    |
|-----------------------|--------------------|
| (1) Glass             | (6) Guide rail     |
| (2) Door sash (Front) | (7) Holder (Front) |
| (3) Door sash (Rear)  | (8) Holder guide   |
| (4) Regulator ASSY    | (9) Slider         |
| (5) Motor ASSY        |                    |

**Tightening torque: N·m (kgf·m, ft·lb)**

**T1: 7.5 (0.75, 5.4)**

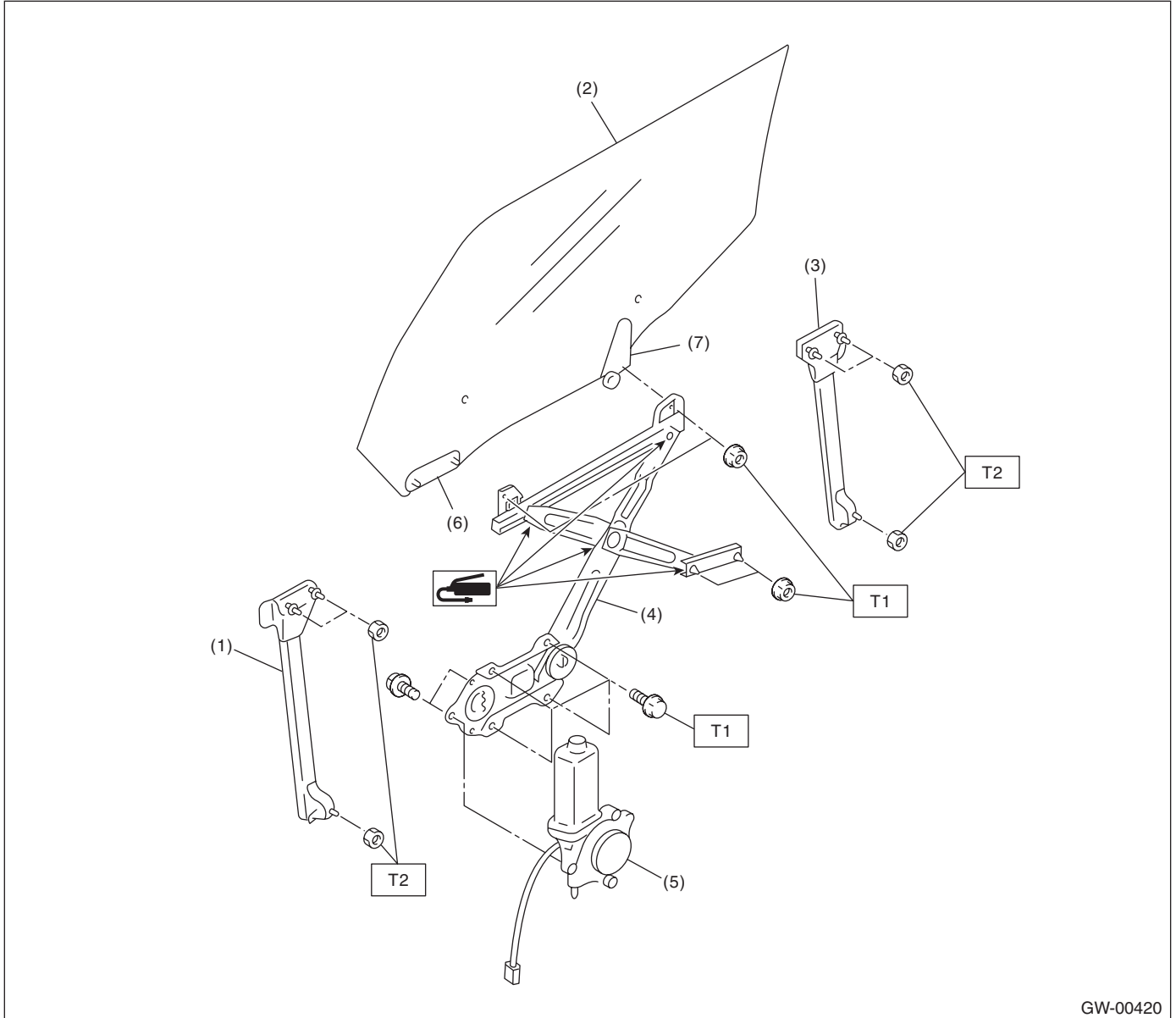
**T2: 14 (1.4, 10.3)**

**T3: 6 (0.6, 4.3)**

# General Description

GLASS/WINDOWS/MIRRORS

## 3. REAR DOOR GLASS



GW-00420

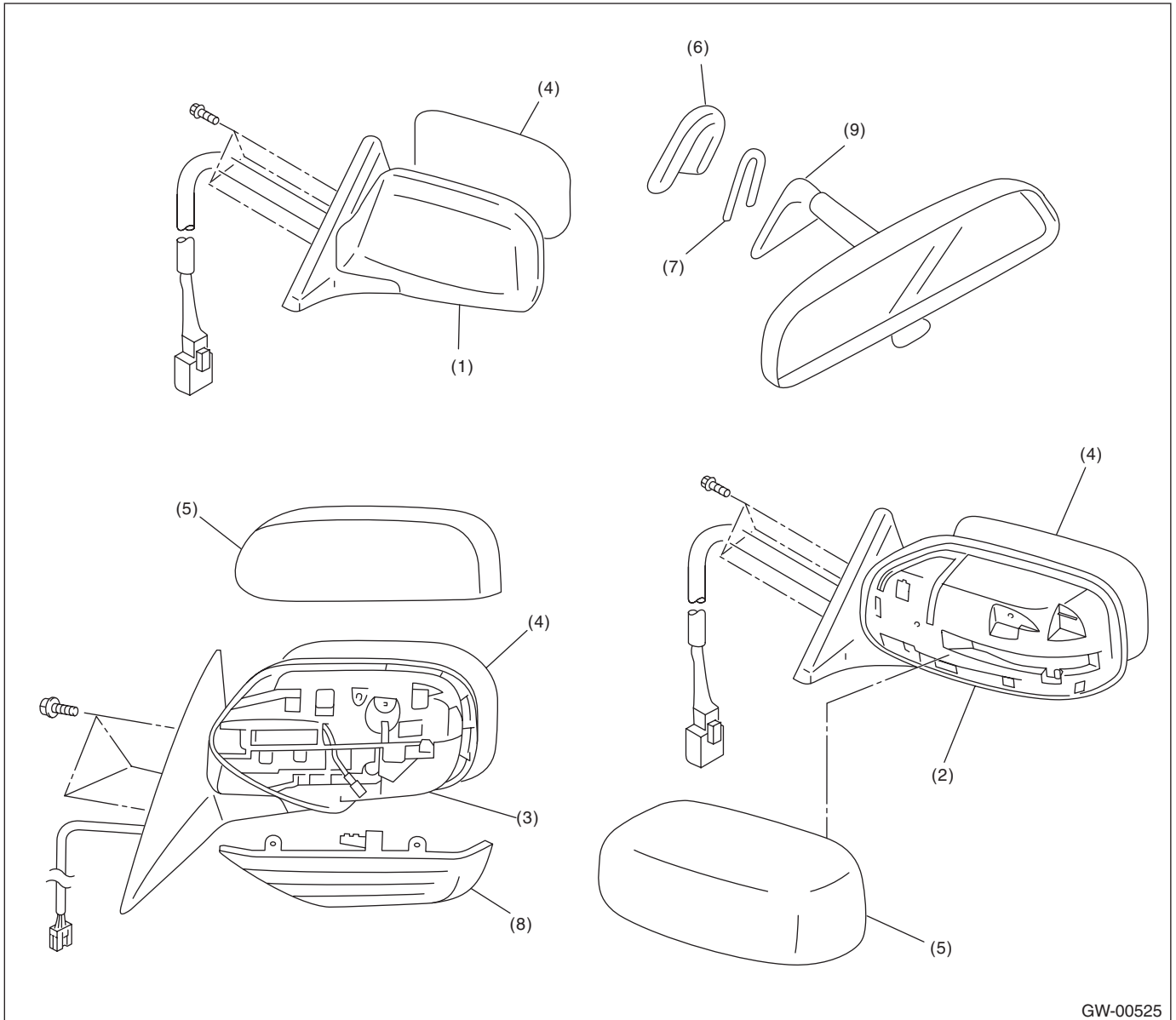
- |                       |                    |
|-----------------------|--------------------|
| (1) Door sash (Front) | (5) Motor ASSY     |
| (2) Glass             | (6) Holder (Front) |
| (3) Door sash (Rear)  | (7) Holder (Rear)  |
| (4) Regulator ASSY    |                    |

**Tightening torque: N·m (kgf·m, ft·lb)**

**T1: 7.5 (0.75, 5.4)**

**T2: 14 (1.4, 10.3)**

## 4. MIRROR



GW-00525

- |  |               |                            |
|--|---------------|----------------------------|
| (1) Outer mirror (Large size)                  | (4) Mirror    | (7) Spring                 |
| (2) Outer mirror (Standard size)               | (5) Scalp cap | (8) Side turn signal light |
| (3) Outer mirror (with side turn signal light) | (6) Mount     | (9) Rearview mirror        |

### B: CAUTION

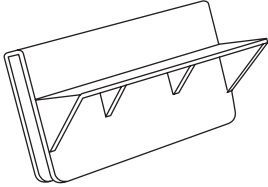
- When electrical connectors are disconnected, always conduct an operational check after connecting them again.
- Avoid impact and damage to the glass.

# General Description

GLASS/WINDOWS/MIRRORS

## C: PREPARATION TOOL

### 1. SPECIAL TOOL

ILLUSTRATION	TOOL NUMBER	DESCRIPTION	REMARKS
 ST61299AE000	61299AE000	SPACER	Used for adjusting the upper end position of door glass. (Glass thickness: 5 mm (0.197 in))

### 2. GENERAL TOOL

TOOL NAME	REMARKS
Circuit tester	Used for checking voltage and continuity.
Piano wire	Used for removing the window glass.
Windshield glass knife	Used for removing the window glass.