

General Description

OCCUPANT DETECTION SYSTEM (DIAGNOSTICS)

2. General Description

A: CAUTION

1) If the seat cushion cover is removed or replaced, make sure to perform occupant detection system adjustment after installing the seat to the vehicle. <Ref. to OD(diag)-17, SYSTEM CALIBRATION (REZEROING), OPERATION, Subaru Select Monitor.>

Failure to do so may cause improper operation of the occupant detection system.

2) As the occupant detection control module and the occupant detection sensor of occupant detection system (passenger's seat only) is securely fixed to the seat cushion frame, never remove the occupant detection control module and pressure sensor from the seat cushion frame.

3) Do not replace the seat cushion pad by itself. Be sure to replace the seat cushion pad & frame assembly as a unit. The seat cushion pad and cushion frame are adjusted as a set at the time of manufacture. If parts from other vehicles or cushion pad and cushion frame of other set is used, the occupant detection system will not function properly.

4) If the seat cushion cover is removed, always replace the wires of the seat cushion cover with new wires.

5) Never connect the battery in reverse polarity. Failure to do so may immediately damage the occupant detection system.

6) Do not disconnect the battery terminals while the engine is running. A large counter electromotive force will be generated in the generator, and this voltage may damage electronic parts such as occupant detection control module etc.

7) Before disconnecting the connectors of each sensor and control module, be sure to turn the ignition switch to OFF and wait for 20 seconds or more. Occupant detection control module may be damaged.

8) Every part relating to occupant detection system is a precision part. Do not drop them.

CAUTION:

- **The connectors of airbag system are yellow. Do not use the electrical test equipment on these circuits.**

- **Be careful not to damage the airbag system wiring harness when servicing the occupant detection system.**

- **Refer to cautions on airbag system when repairing occupant detection system. <Ref. to AB-4, CAUTION, General Description.>**

B: INSPECTION

Measure the battery voltage and specific gravity of electrolyte, and check the electrolyte amount.

Standard voltage: 12 V or more

Specific gravity: 1.260 or more

Electrolyte: between the upper level and lower level

General Description

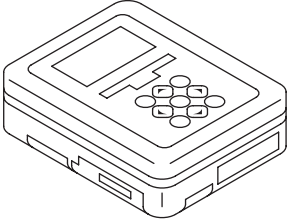
OCCUPANT DETECTION SYSTEM (DIAGNOSTICS)

C: PREPARATION TOOL

CAUTION:

To measure the voltage and resistance of airbag system component and occupant detection system component, be sure to use the specified test harness.

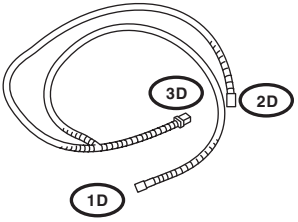
1. SPECIAL TOOL

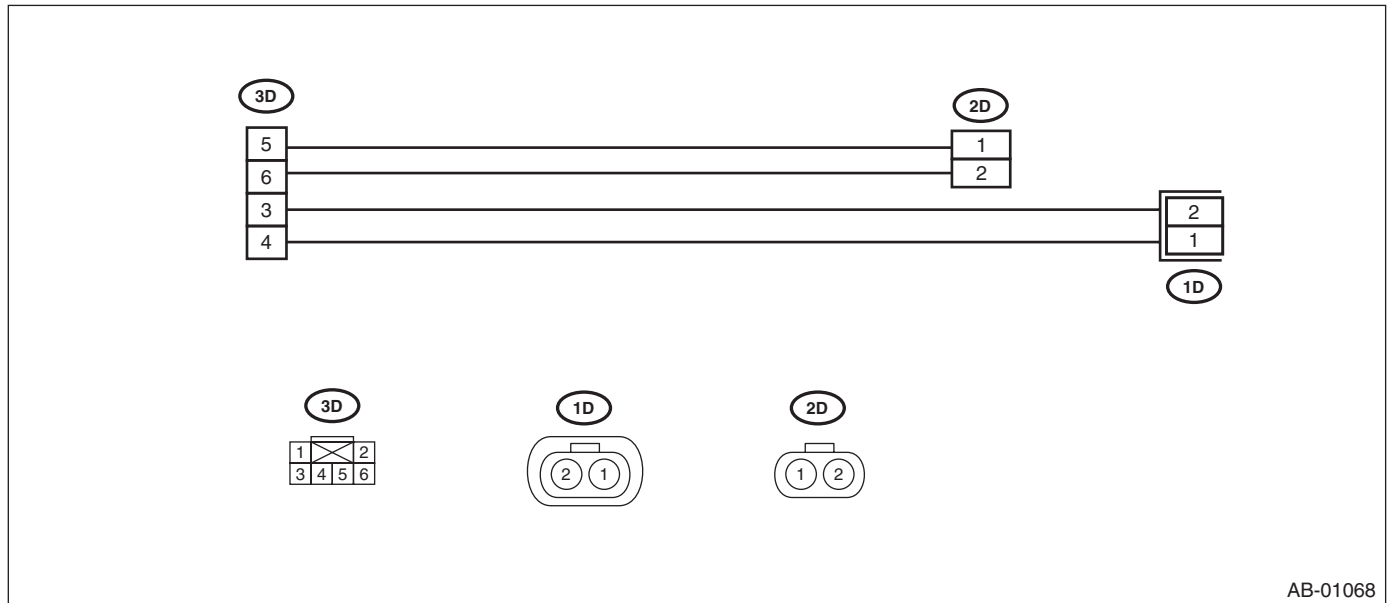
ILLUSTRATION	TOOL NUMBER	DESCRIPTION	REMARKS
 ST1B020XU0	1B020XU0	SUBARU SELECT MONITOR KIT	Used for troubleshooting the electrical system.

General Description

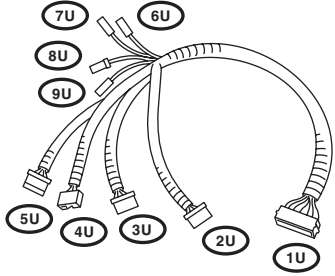
OCCUPANT DETECTION SYSTEM (DIAGNOSTICS)

TEST HARNESS D

ILLUSTRATION	TOOL NUMBER	DESCRIPTION	REMARKS
 <p>ST98299AG060</p>	98299AG060	TEST HARNESS D	Used when measuring voltage and resistance of front seat belt buckle switch.

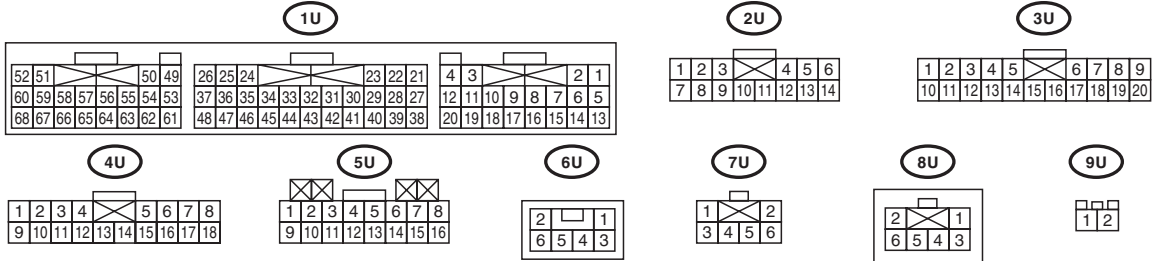
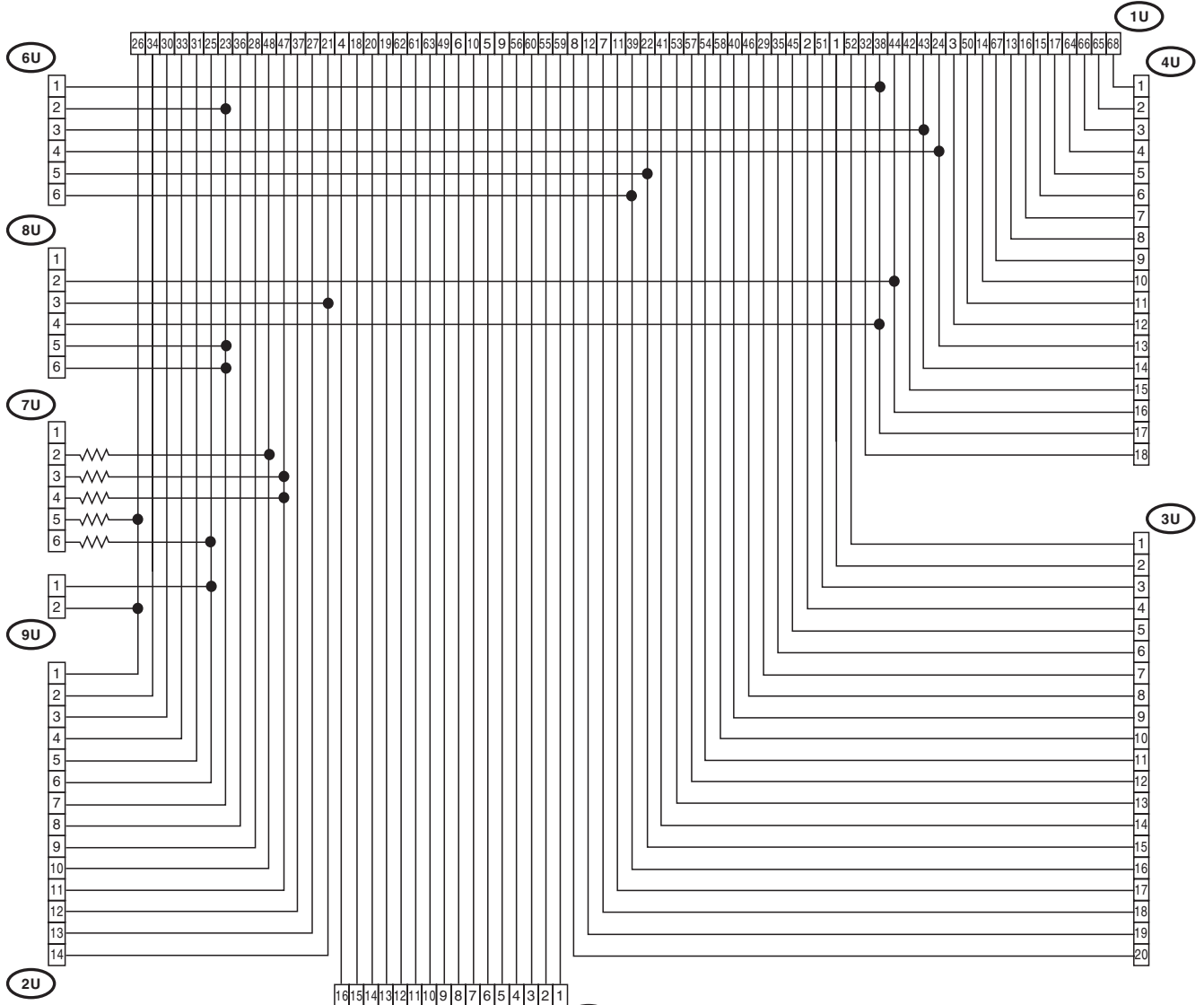


TEST HARNESS U

ILLUSTRATION	TOOL NUMBER	DESCRIPTION	REMARKS
 <p>ST98299AG000</p>	98299AG000	TEST HARNESS U	Used when measuring voltage and resistance of airbag control module.

General Description

OCCUPANT DETECTION SYSTEM (DIAGNOSTICS)

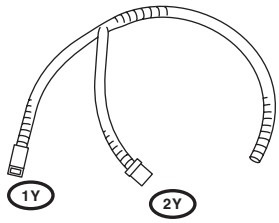


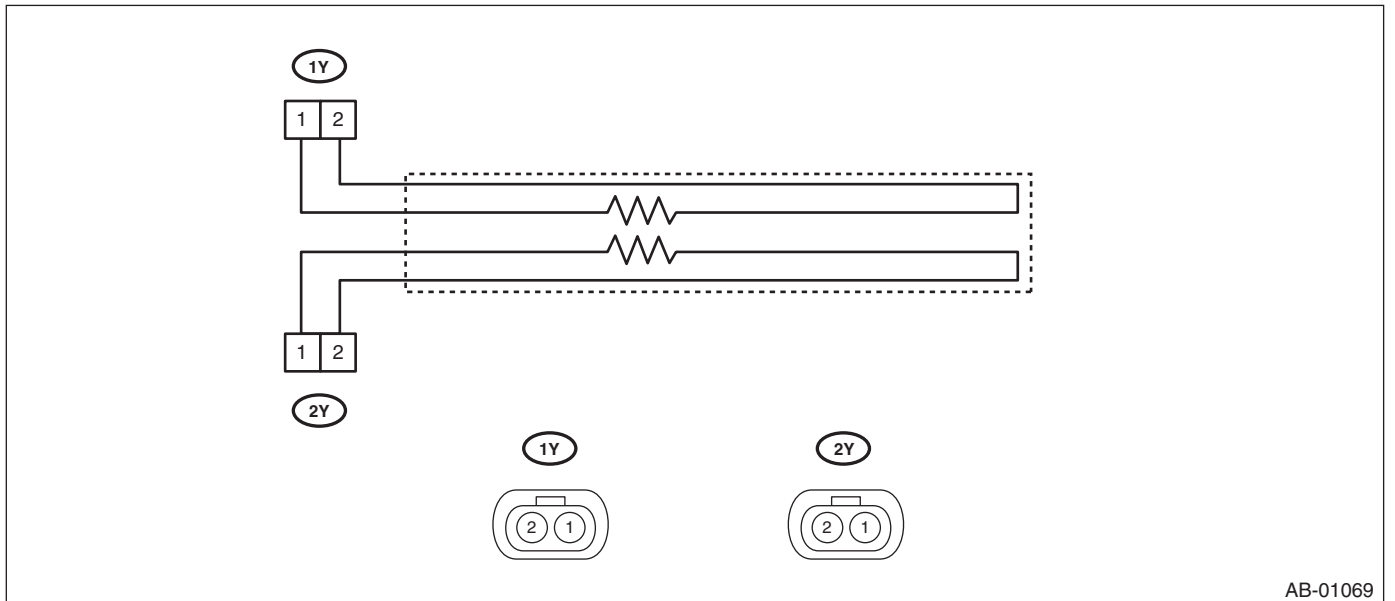
AB-00930

General Description

OCCUPANT DETECTION SYSTEM (DIAGNOSTICS)

TEST HARNESS Y

ILLUSTRATION	TOOL NUMBER	DESCRIPTION	REMARKS
 <p data-bbox="324 567 467 590">ST98299AG040</p>	98299AG040	TEST HARNESS Y	Used for diagnosing seat belt buckle switch.

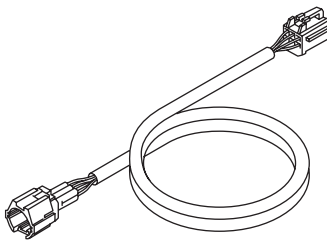


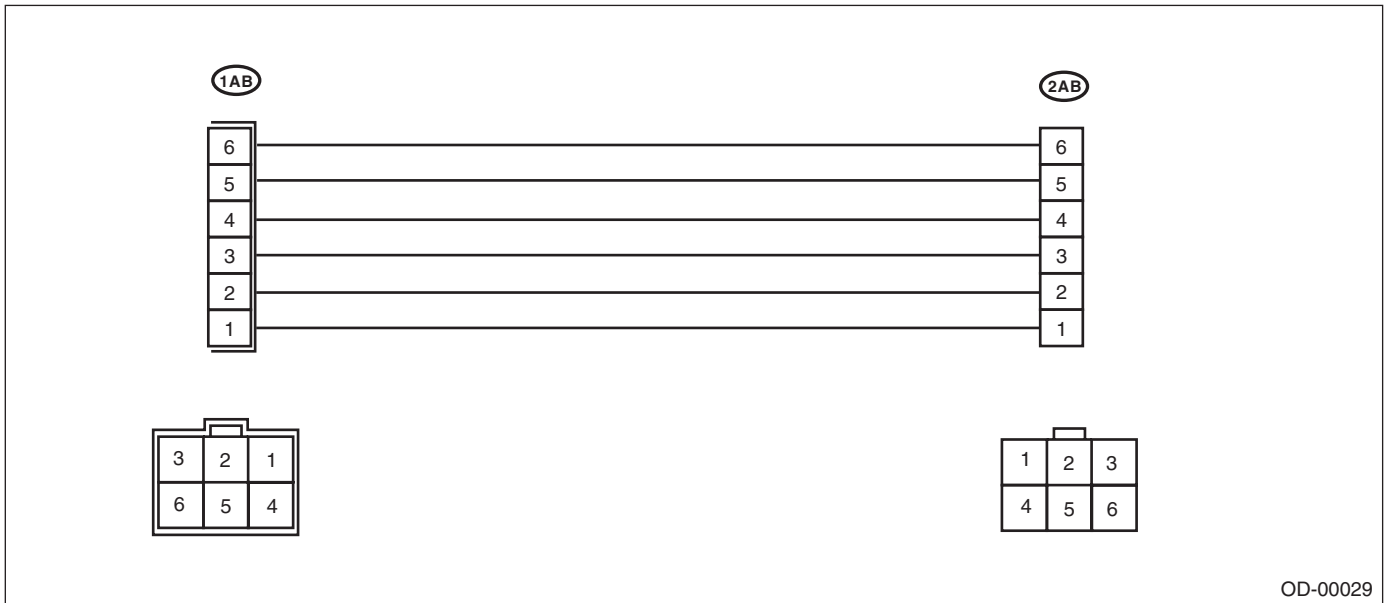
AB-01069

General Description

OCCUPANT DETECTION SYSTEM (DIAGNOSTICS)

TEST HARNESS AB

ILLUSTRATION	TOOL NUMBER	DESCRIPTION	REMARKS
 <p style="text-align: center;">ST98299XA000</p>	98299XA000	TEST HARNESS AB	Used when measuring voltage and resistance of occupant detection system.

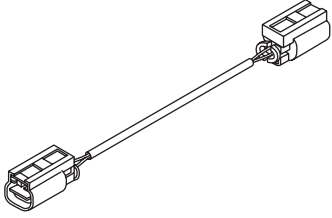


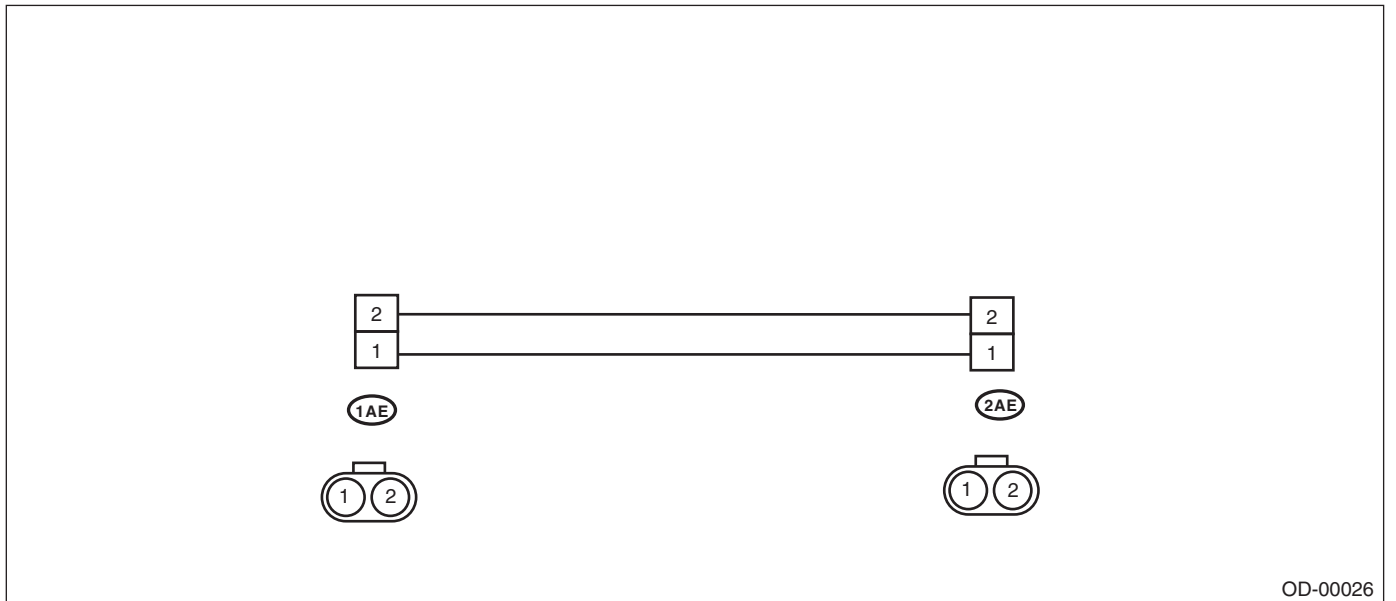
OD-00029

General Description

OCCUPANT DETECTION SYSTEM (DIAGNOSTICS)

TEST HARNESS AE

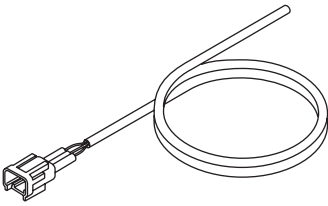
ILLUSTRATION	TOOL NUMBER	DESCRIPTION	REMARKS
 ST98299XA030	98299XA030	TEST HARNESS AE	Adapter harness of TEST HARNESS Y Used for diagnosing seat belt buckle switch.

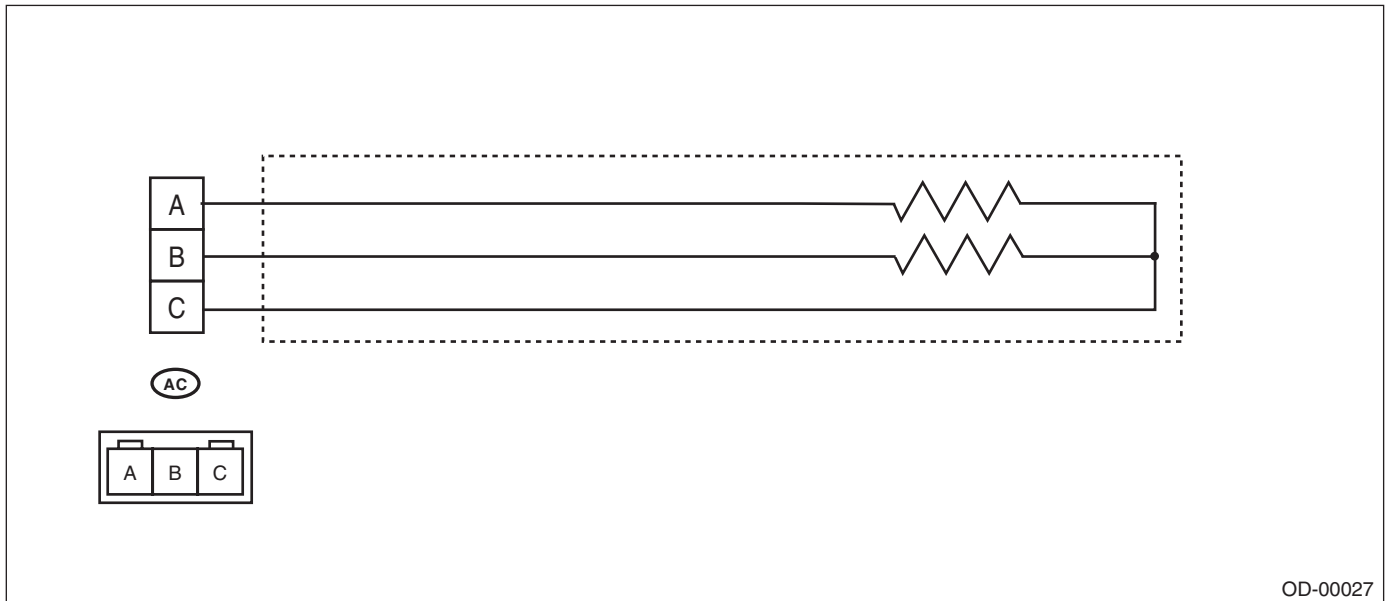


General Description

OCCUPANT DETECTION SYSTEM (DIAGNOSTICS)

TEST HARNESS AC

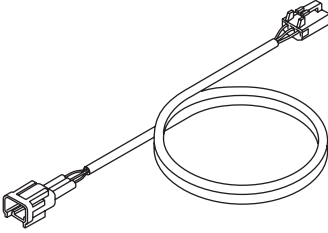
ILLUSTRATION	TOOL NUMBER	DESCRIPTION	REMARKS
 ST98299XA010	98299XA010	TEST HARNESS AC	Used for diagnosing seat belt tension sensor.

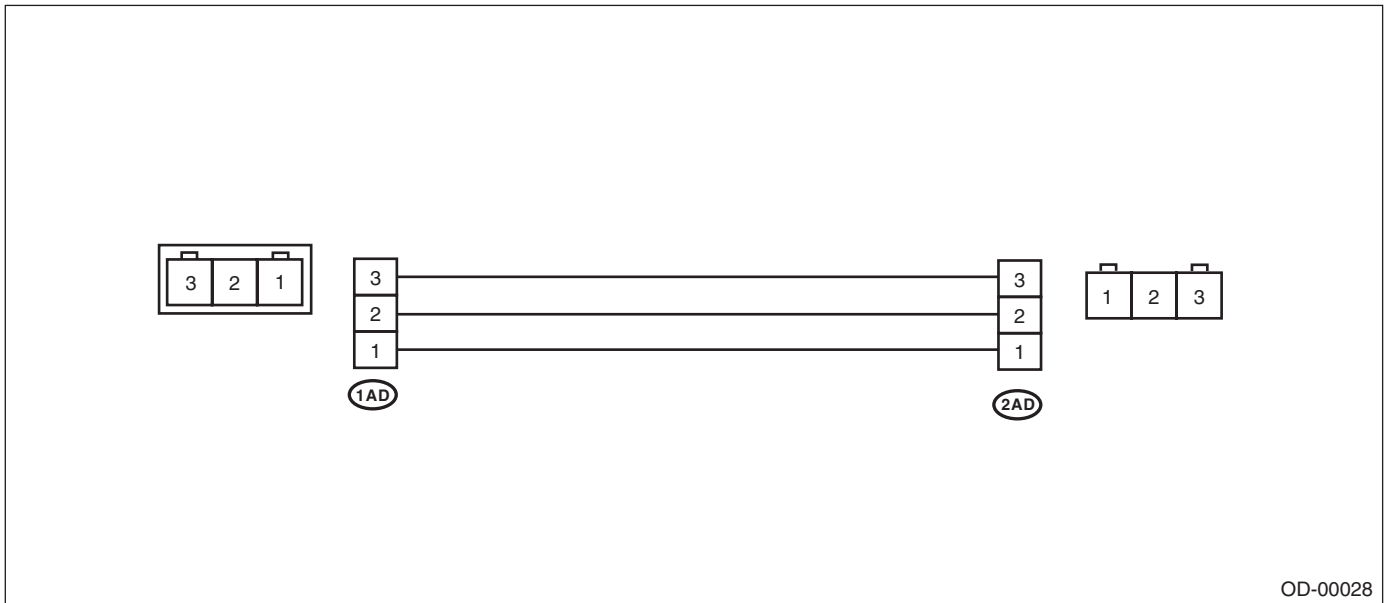


General Description

OCCUPANT DETECTION SYSTEM (DIAGNOSTICS)

TEST HARNESS AD

ILLUSTRATION	TOOL NUMBER	DESCRIPTION	REMARKS
 <p>ST98299XA020</p>	98299XA020	TEST HARNESS AD	Used for measuring voltage and resistance of seat belt tension sensor.



2. GENERAL TOOL

TOOL NAME	REMARKS
Circuit tester	Used for measuring resistance, voltage and current.