

# General Description

## WIPER AND WASHER SYSTEMS

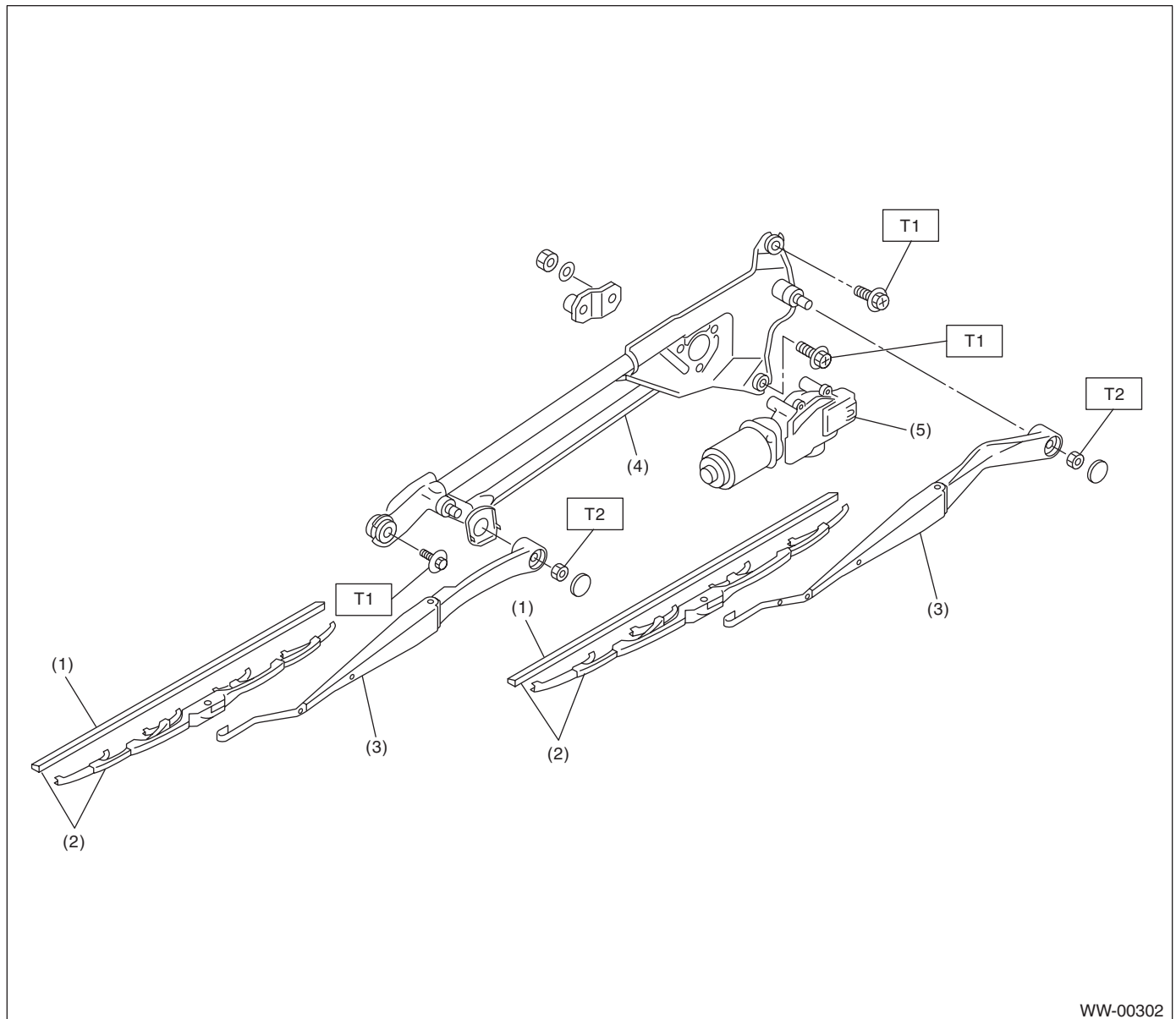
### 1. General Description

#### A: SPECIFICATION

Front wiper motor	Input	12 V — 72 W or less
Rear wiper motor	Input	12 V — 42 W or less
Front washer pump	Pump type	Centrifugal
	Input	12 V — 36 W or less
Rear washer pump	Pump type	Centrifugal
	Input	12 V — 36 W or less

#### B: COMPONENT

##### 1. FRONT WIPER



WW-00302

- (1) Wiper rubber
- (2) Wiper blade ASSY
- (3) Wiper arm

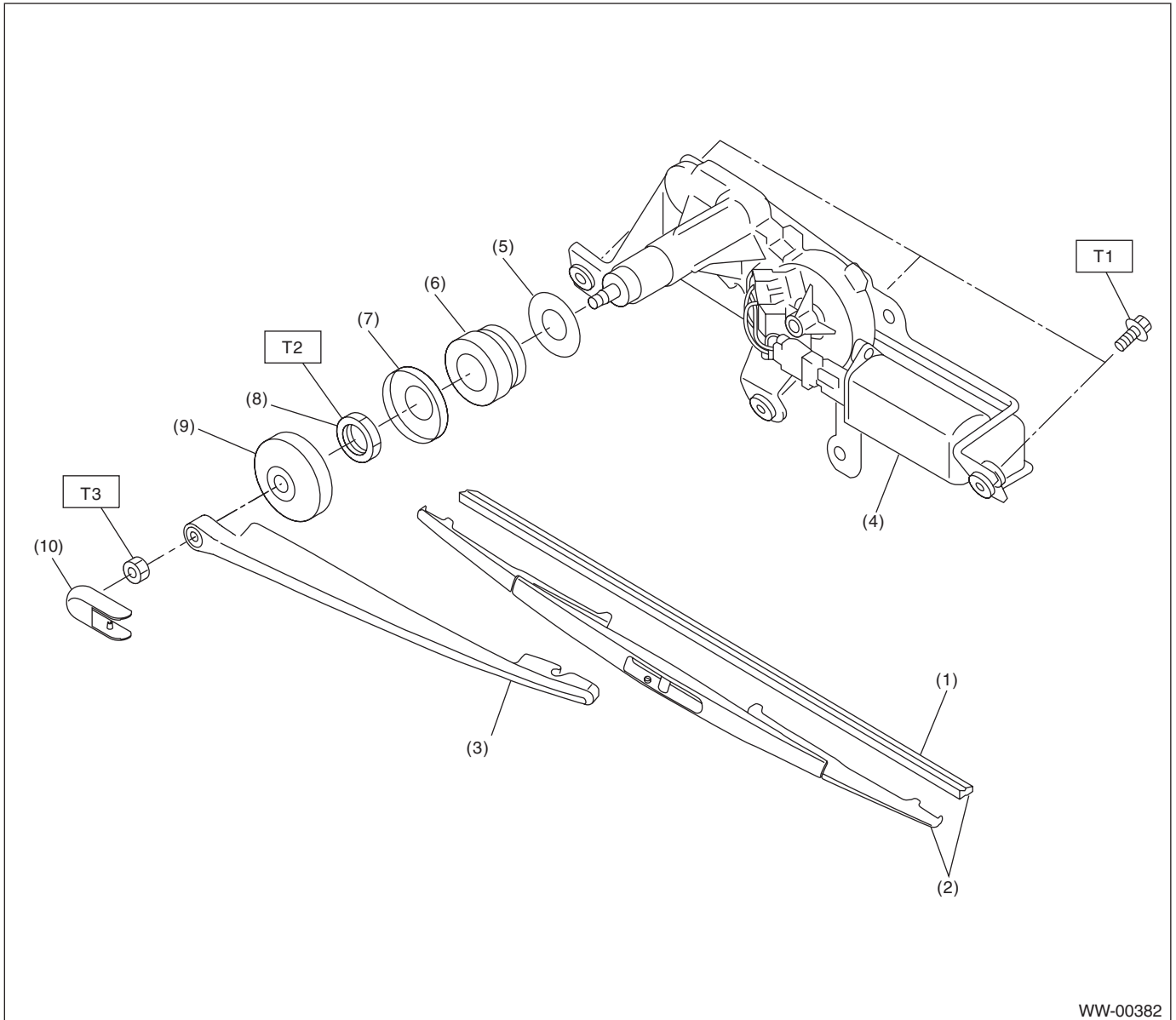
- (4) Wiper link
- (5) Wiper motor

**Tightening torque: N·m (kgf·m, ft·lb)**

**T1: 6.0 (0.61, 4.4)**

**T2: 20 (2.0, 14.5)**

### 2. REAR WIPER



WW-00382

- |                      |                      |
|----------------------|----------------------|
| (1) Wiper rubber     | (6) Cushion          |
| (2) Wiper blade ASSY | (7) Spacer B         |
| (3) Wiper arm        | (8) Nut              |
| (4) Wiper motor      | (9) Cap              |
| (5) Spacer A         | (10) Wiper arm cover |

**Tightening torque: N·m (kgf·m, ft·lb)**

**T1: 6.0 (0.61, 4.4)**

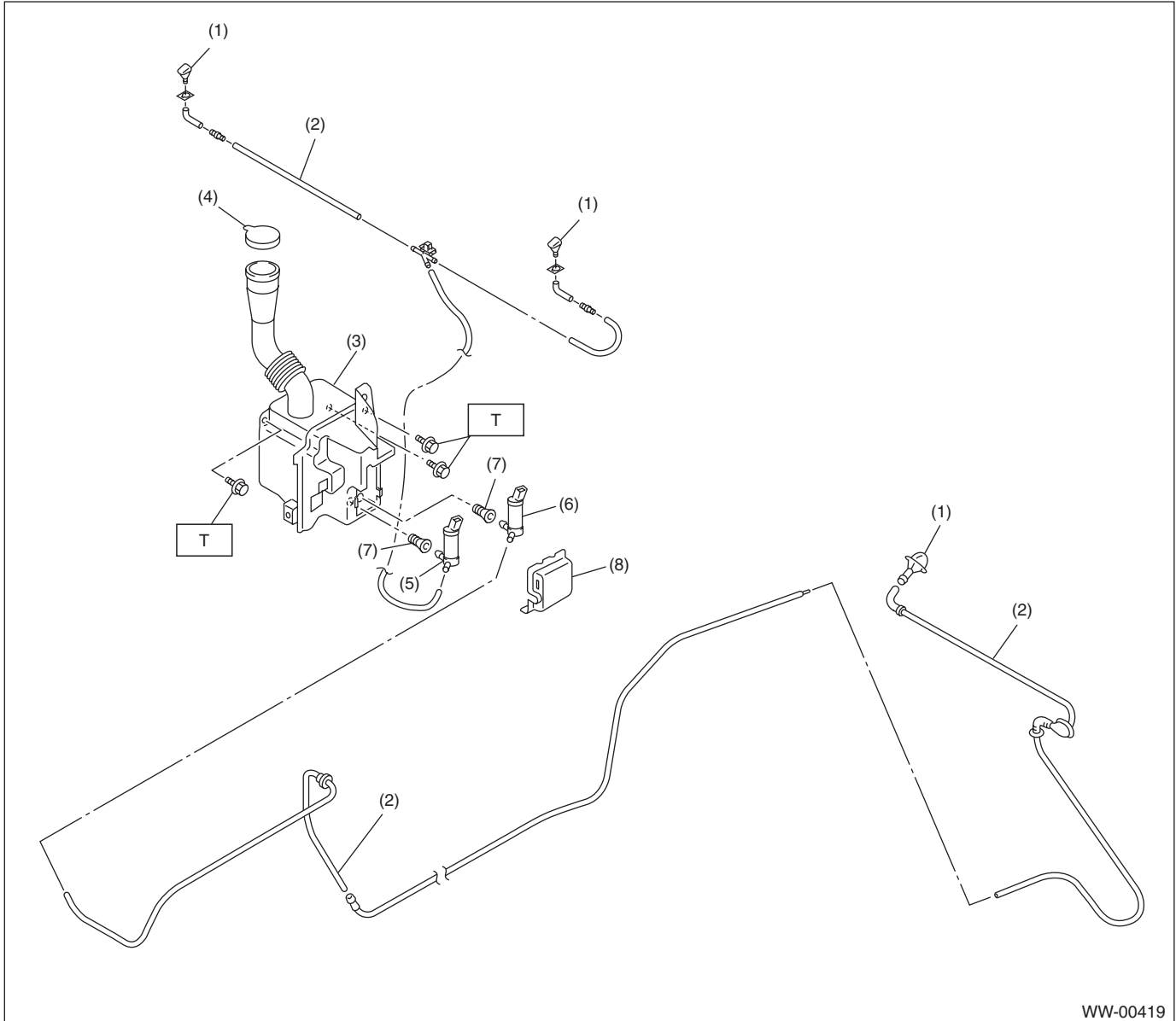
**T2: 7.5 (0.76, 5.5)**

**T3: 8.0 (0.82, 5.9)**

# General Description

## WIPER AND WASHER SYSTEMS

### 3. WASHER TANK



- |                     |                        |
|---------------------|------------------------|
| (1) Washer nozzle   | (5) Front washer motor |
| (2) Washer hose     | (6) Rear washer motor  |
| (3) Washer tank     | (7) Grommet            |
| (4) Washer tank cap | (8) Washer motor cover |

**Tightening torque: N·m (kgf·m, ft·lb)**

**T: 6.0 (0.61, 4.4)**

#### **C: CAUTION**

- Connect the connectors and hoses securely during reassembly. After reconnection, make sure each part operates normally.
- Be careful with the airbag system wiring harness which passes near electrical parts and switches.
- All airbag system wiring harness and connectors are colored yellow. Do not use a tester equipment on these circuits.
- Care must be taken when connecting the washer hose so that no bending, jamming, etc. are caused.

- If even a small amount of silicon oil or grease enters tank and washer fluid passages, an oil film will be formed on the glass, and will cause the wiper to chatter and judder. Be careful no oil comes into contact with the system.