

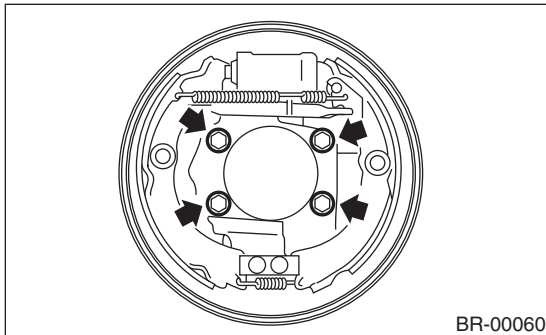
10. Rear Drum Brake Assembly

A: REMOVAL

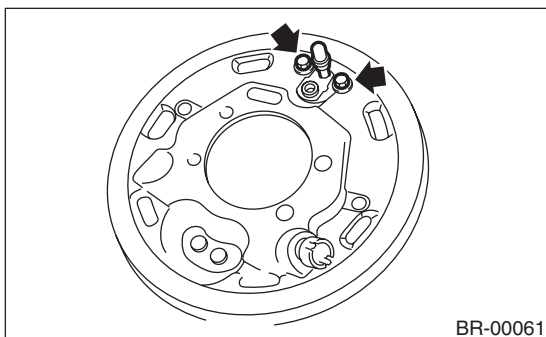
CAUTION:

Do not let brake fluid come into contact with the painted surface of the vehicle body. Completely wash away with water immediately and wipe off if it was accidental.

- 1) Set the vehicle on a lift.
- 2) Loosen the wheel nuts.
- 3) Lift-up the vehicle, and then remove the rear wheels.
- 4) Release the parking brake.
- 5) Remove the brake drum from the brake assembly. <Ref. to BR-30, REMOVAL, Rear Drum Brake Drum.>
- 6) Remove the brake shoe. <Ref. to BR-27, REMOVAL, Rear Drum Brake Shoe.>
- 7) Disconnect the brake hose. <Ref. to BR-44, REAR BRAKE HOSE (DRUM BRAKE), REMOVAL, Brake Hose.>
- 8) Remove the hub. <Ref. to DS-21, REMOVAL, Rear Axle.>
- 9) Disconnect the ABS wheel speed sensor from the back plate.
- 10) Remove the rear drum brake assembly.



- 11) Remove the bolts holding the wheel cylinder assembly on the back plate, and remove the wheel cylinder assembly.

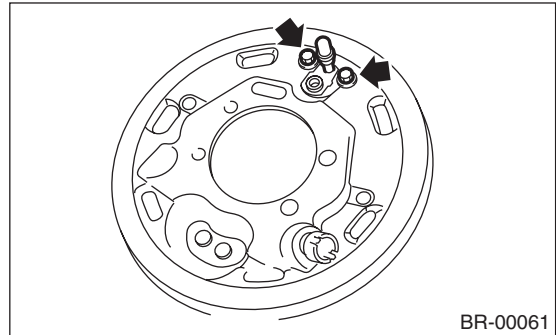


B: INSTALLATION

- 1) Clean the back plate and wheel cylinder assembly.
- 2) Install the wheel cylinder assembly on the back plate, and tighten bolts.

Tightening torque:

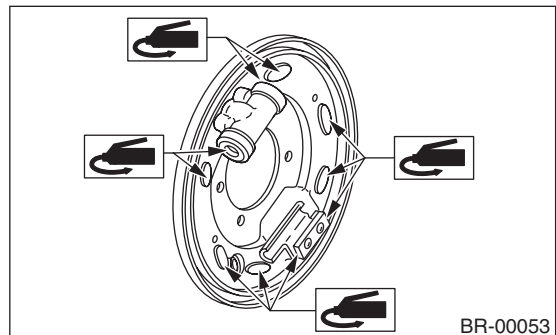
10 N·m (1.0 kgf-m, 7.2 ft-lb)



- 3) Apply grease to the portions indicated by arrows in the figure.

Brake grease:

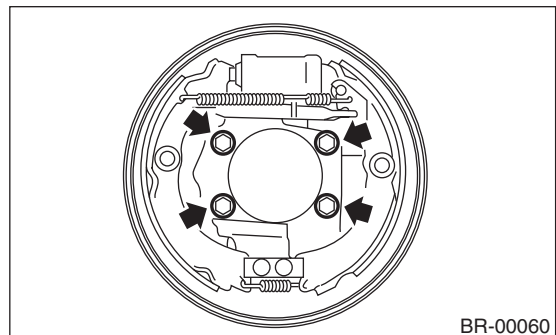
Dow Corning Molykote M 7439 (Part No. 003602001)



- 4) Install the brake assembly on housing, and tighten the bolts to install back plate.

Tightening torque:

52 N·m (5.3 kgf-m, 38.3 ft-lb)



- 5) Install the hub. <Ref. to DS-24, INSTALLATION, Rear Axle.>

Rear Drum Brake Assembly

BRAKE

6) Connect the brake hose, and tighten the brake hose flange nut.

Tightening torque:

18 N·m (1.8 kgf-m, 13.0 ft-lb)

CAUTION:

When connecting the brake hose, do not twist it.

7) Install the ABS wheel speed sensor on the back plate.

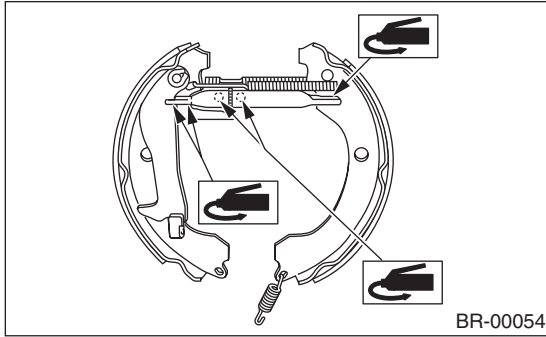
Tightening torque:

32 N·m (3.3 kgf-m, 23.6 ft-lb)

8) Apply grease to the adjusting screw and both ends of adjuster.

Brake grease:

Dow Corning Molykote M 7439 (Part No. 003602001)



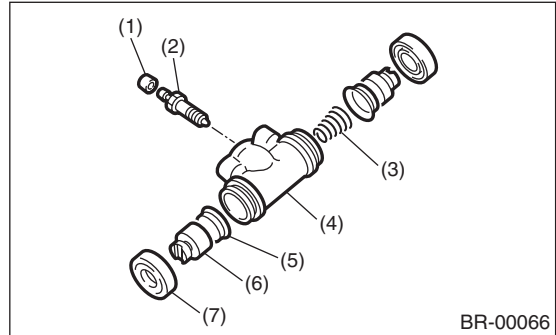
9) Install the brake shoe. <Ref. to BR-28, INSTALLATION, Rear Drum Brake Shoe.>

10) Install the brake drum. <Ref. to BR-30, INSTALLATION, Rear Drum Brake Drum.>

11) After installing the rear drum brake assembly, bleed air from the brake line. <Ref. to BR-42, Air Bleeding.>

C: DISASSEMBLY

1) Remove the right and left dust boots from the wheel cylinder.



- (1) Air bleeder cap
- (2) Air bleeder screw
- (3) Spring
- (4) Wheel cylinder body
- (5) Cup
- (6) Piston
- (7) Dust boots

2) Remove the piston, cup, spring and air bleeder screw and cap.

D: ASSEMBLY

1) Clean all parts with brake fluid. Check and replace faulty parts.

- Cup and boot damage or fatigue
- Wheel cylinder body, piston and spring damage or rust

2) Assemble in the reverse order of disassembly.

(1) When attaching the cup, use the ST and apply brake fluid to the sliding surfaces to make installation smoother. Be careful of the direction of the cup at this time.

(2) The ST is available in different sizes.

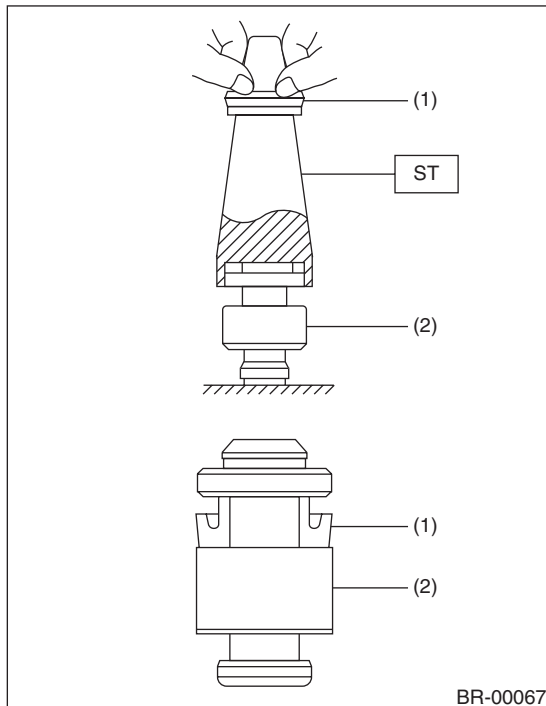
CAUTION:

When replacing with the repair kit, make sure that the sizes of wheel cylinder body and cup are the same as those being replaced.

ST: ADAPTER	
Size	Part No.
19 mm (3/4 in)	926460000

CAUTION:

When assembling, be careful that the wheel cylinder does not become scratched, and that no dust enters.



- (1) Cup
- (2) Piston

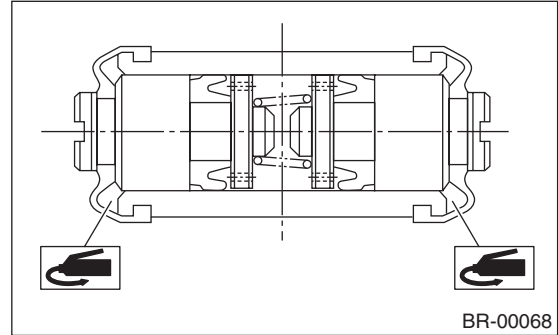
3) Apply rubber grease to the boot inside as shown in figure.

CAUTION:

Never use brake grease.

Grease:

NIGLUBE RX-2 (Part No. K0779GA102)



E: INSPECTION

If the deformation or wear of back plate, shoe, etc. are severe, replace them.