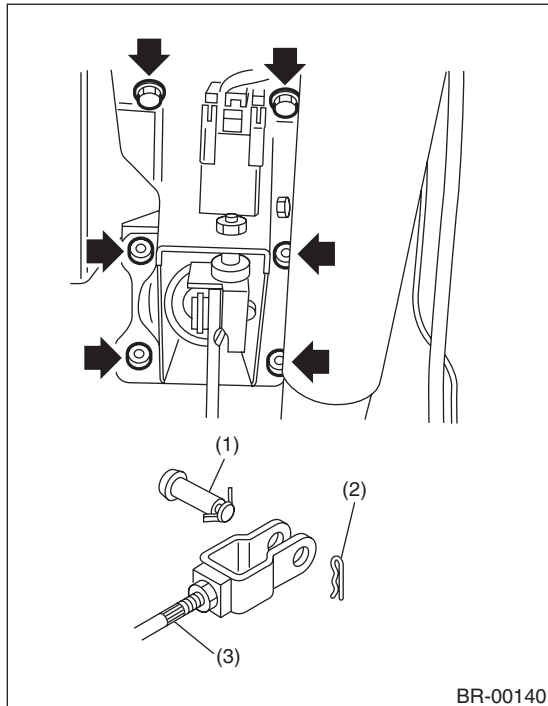


## 17.Brake Pedal

### A: REMOVAL

#### 1. AT MODEL

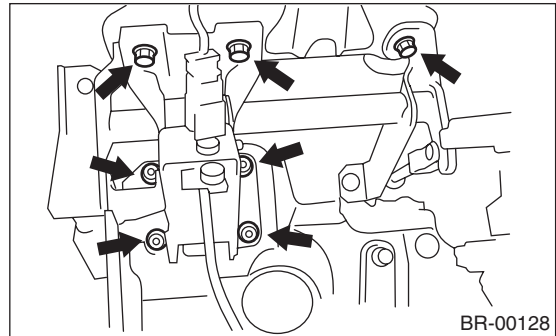
- 1) Disconnect the ground cable from the battery.
- 2) Remove the instrument panel lower cover from instrument panel.
- 3) Remove the clevis pins which secure the brake pedal to the brake booster operating rod. Also disconnect the stop light switch connector.
- 4) Remove the two bolts and four nuts which secure brake pedal to pedal.



- (1) Clevis pin
- (2) Snap pin
- (3) Operating rod

#### 2. MT MODEL

- 1) Remove the steering bolt.
- 2) Raise the vehicle on a lift and remove the two bolts which secure the steering unit to the underside of the body.
- 3) Lower the vehicle.
- 4) Remove the instrument panel lower cover from instrument panel.
- 5) Disconnect the following parts from pedal bracket.
  - Operating rod of brake booster
  - Connector (stop light switch, etc.)
- 6) Remove the clevis pin which secures the lever and push rod.
- 7) Remove the nut which secures the clutch master cylinder.
- 8) Remove the steering assembly.
- 9) Remove the accelerator pedal.
- 10) Remove the bolts and nuts which secure the pedal bracket.



### B: INSTALLATION

- 1) Install in the reverse order of removal.

#### CAUTION:

- If the cable clamp is damaged, replace it with a new part.
  - Never fail to cover outer cable end with boot.
  - Be careful not to twist the accelerator cable.
  - Always use a new clevis pin.
- 2) Adjust the clutch pedal. <Ref. to CL-26, ADJUSTMENT, Clutch Pedal.>
  - 3) Check the brake pedal after installation. <Ref. to BR-49, INSPECTION, Brake Pedal.>

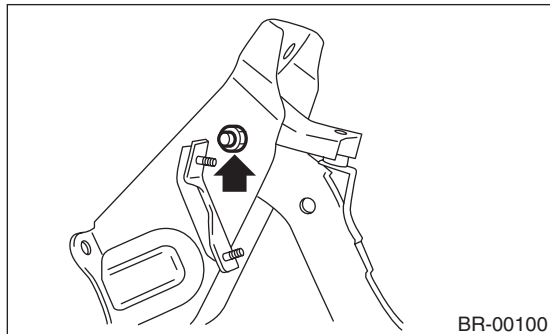
# Brake Pedal

## BRAKE

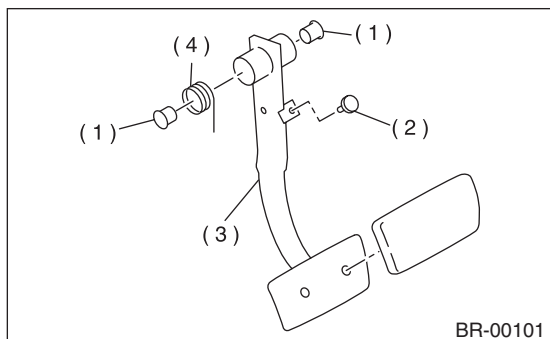
### C: DISASSEMBLY

#### 1. AT MODEL

- 1) Remove the brake switch. <Ref. to BR-50, REMOVAL, Stop Light Switch.>
- 2) Unbolt, and then remove the brake pedal.



- 3) Remove the bushing, stopper and spring.

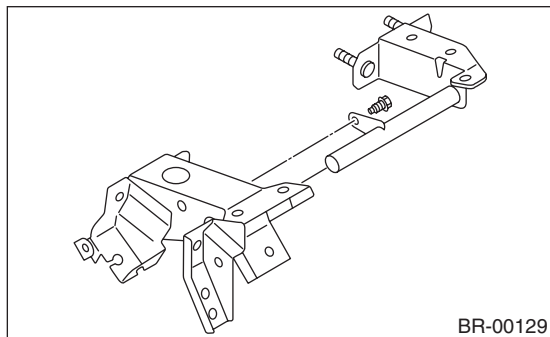


- (1) Bushing
- (2) Stopper
- (3) Brake pedal
- (4) Brake pedal spring

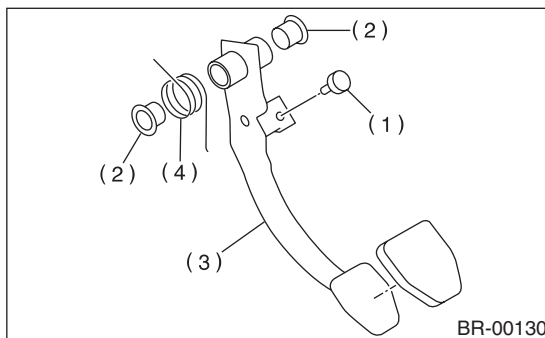
- 4) Remove the brake pedal pad.

#### 2. MT MODEL

- 1) Remove the brake switch. <Ref. to BR-50, REMOVAL, Stop Light Switch.>
- 2) Remove the clutch pedal. <Ref. to CL-25, DISASSEMBLY, Clutch Pedal.>
- 3) Remove the clutch master cylinder bracket.



- 4) Remove the bushing, spring and stopper.



- (1) Stopper
- (2) Bushing
- (3) Brake pedal
- (4) Brake pedal spring

- 5) Remove the brake pedal pad.

### D: ASSEMBLY

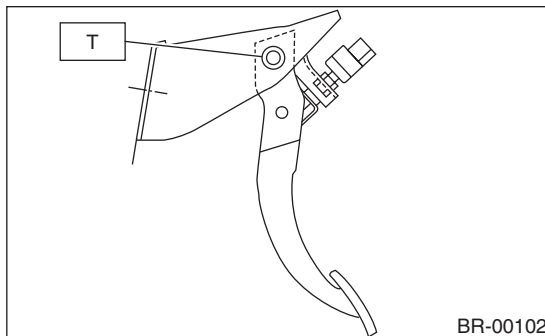
- 1) Position the stop light switch, etc. to the brake pedal.
- 2) Clean the inside of bores of the clutch pedal and brake pedal, apply grease, and set bushings into the bores.
- 3) Align bores of the pedal bracket, clutch pedal and brake pedal, attach brake pedal return spring and clutch pedal effort reduction spring (vehicles equipped with hill holder), then install the pedal bolt.

#### NOTE:

Clean up the inside of bushings and apply a thin coat of grease before installing the spacer.

#### Tightening torque:

**T: 29 N·m (3.0 kgf·m, 21.7 ft·lb)**



- 4) After attaching the brake pedal to the vehicle, adjust the position of the stop light switch. <Ref. to BR-50, ADJUSTMENT, Stop Light Switch.>

## E: INSPECTION

1) Move the brake and clutch pedal pads in the lateral direction with a force of approx. 10 N (1 kgf, 2 lb), and check the pedal deflection is in the range of specifications.

### CAUTION:

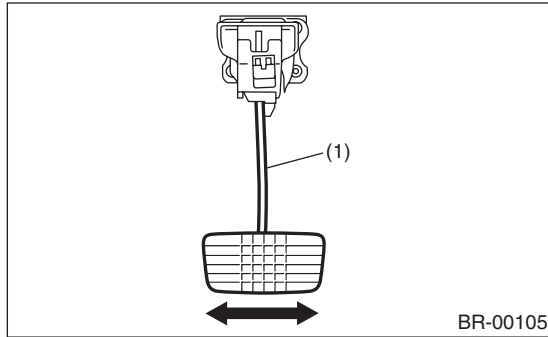
If excessive deflection is found, replace the bushing with new part.

**Deflection of the brake and clutch pedal:**

**Service limit:**

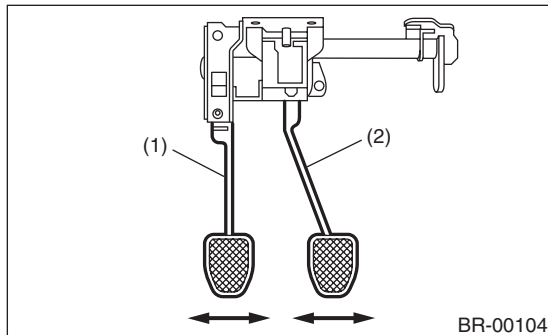
**5.0 mm (0.197 in) or less**

- AT model



(1) Brake pedal

- MT model



(1) Clutch pedal

(2) Brake pedal

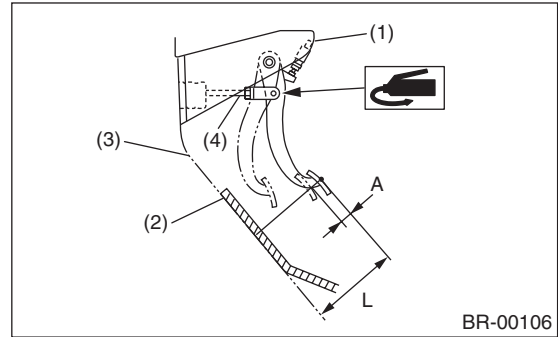
- 2) Check the position of pedal pad.

**Pedal height: L**

**148 mm (5.83 in)**

**Brake pedal free play: A**

**1 — 3 mm (0.04 — 0.12 in) [Depress brake pedal with a force of less than 10 N (1 kgf, 2 lb).]**



(1) Stop light switch

(2) Mat

(3) Toe board

(4) Operating rod

- 3) If it is not within the specification, adjust it by adjusting the brake booster operating rod length.