

General Description

FUEL INJECTION (FUEL SYSTEMS)

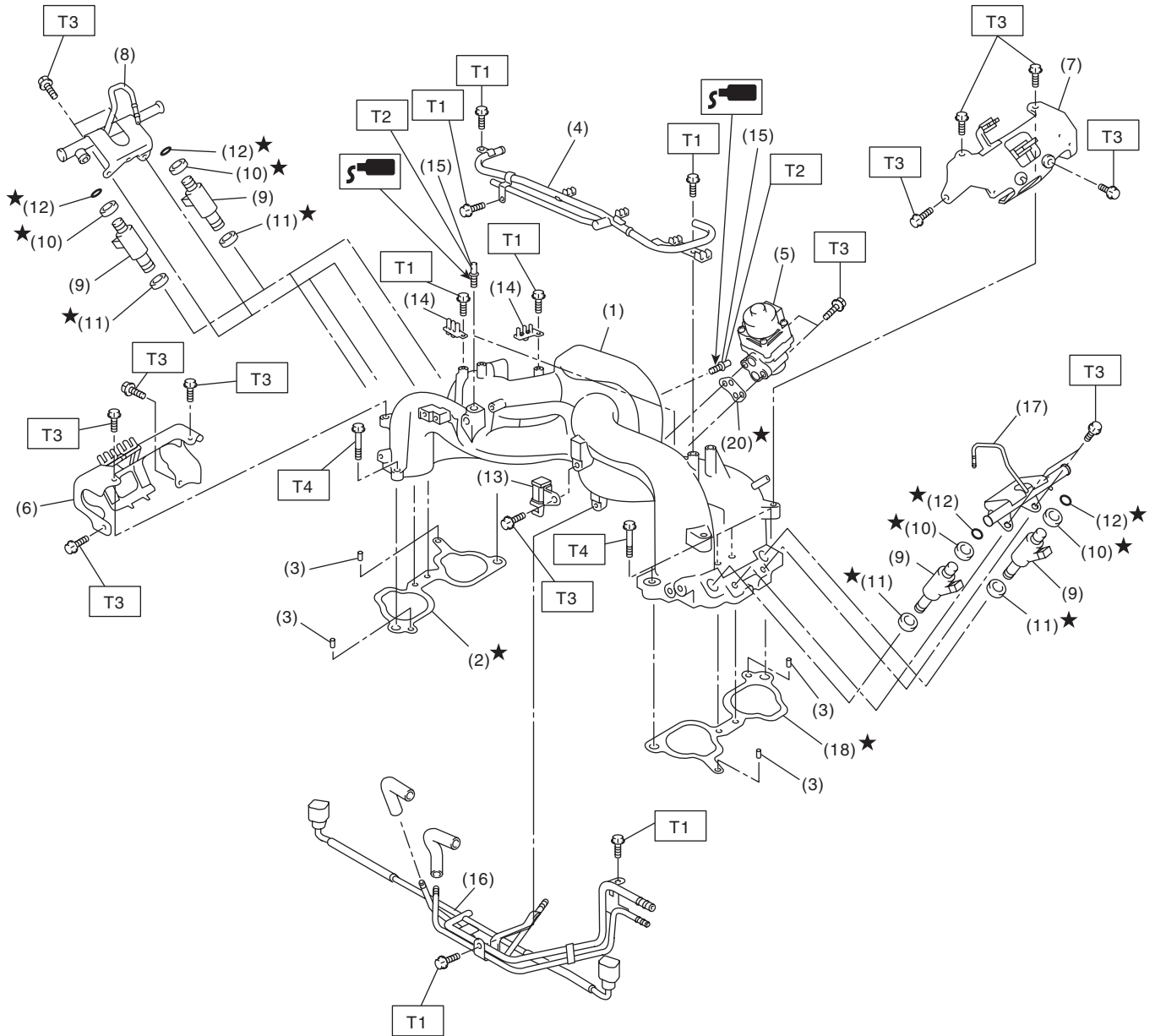
1. General Description

A: SPECIFICATION

Item		Specification
Fuel tank	Capacity	60 ℓ (15.9 US gal, 13.2 Imp gal)
	Locations	Under rear seat
Fuel pump	Type	Impeller
	Shutoff discharge pressure	370 — 677 kPa (3.77 — 6.9 kg/cm ² , 53.6 — 98 psi)
	Discharge rate	105 ℓ (27.7 US gal, 23.1 Imp gal)/h or more [300 kPa, 12 V (3.06 kg/cm ² , 43.5 psi)]
Fuel filter		Intank type

B: COMPONENT

1. INTAKE MANIFOLD



FU-02708

General Description

FUEL INJECTION (FUEL SYSTEMS)

- | | | |
|----------------------------|-----------------------------------|----------------------------|
| (1) Intake manifold | (9) Fuel injector | (17) Fuel injector pipe LH |
| (2) Gasket RH | (10) O-ring | (18) Gasket LH |
| (3) Guide pin | (11) O-ring | |
| (4) PCV pipe | (12) O-ring | |
| (5) EGR valve | (13) Purge control solenoid valve | |
| (6) Fuel pipe protector RH | (14) Plug cord holder | |
| (7) Fuel pipe protector LH | (15) Nipple | |
| (8) Fuel injector pipe RH | (16) Fuel pipe | |

Tightening torque:N·m (kgf·m, ft·lb)

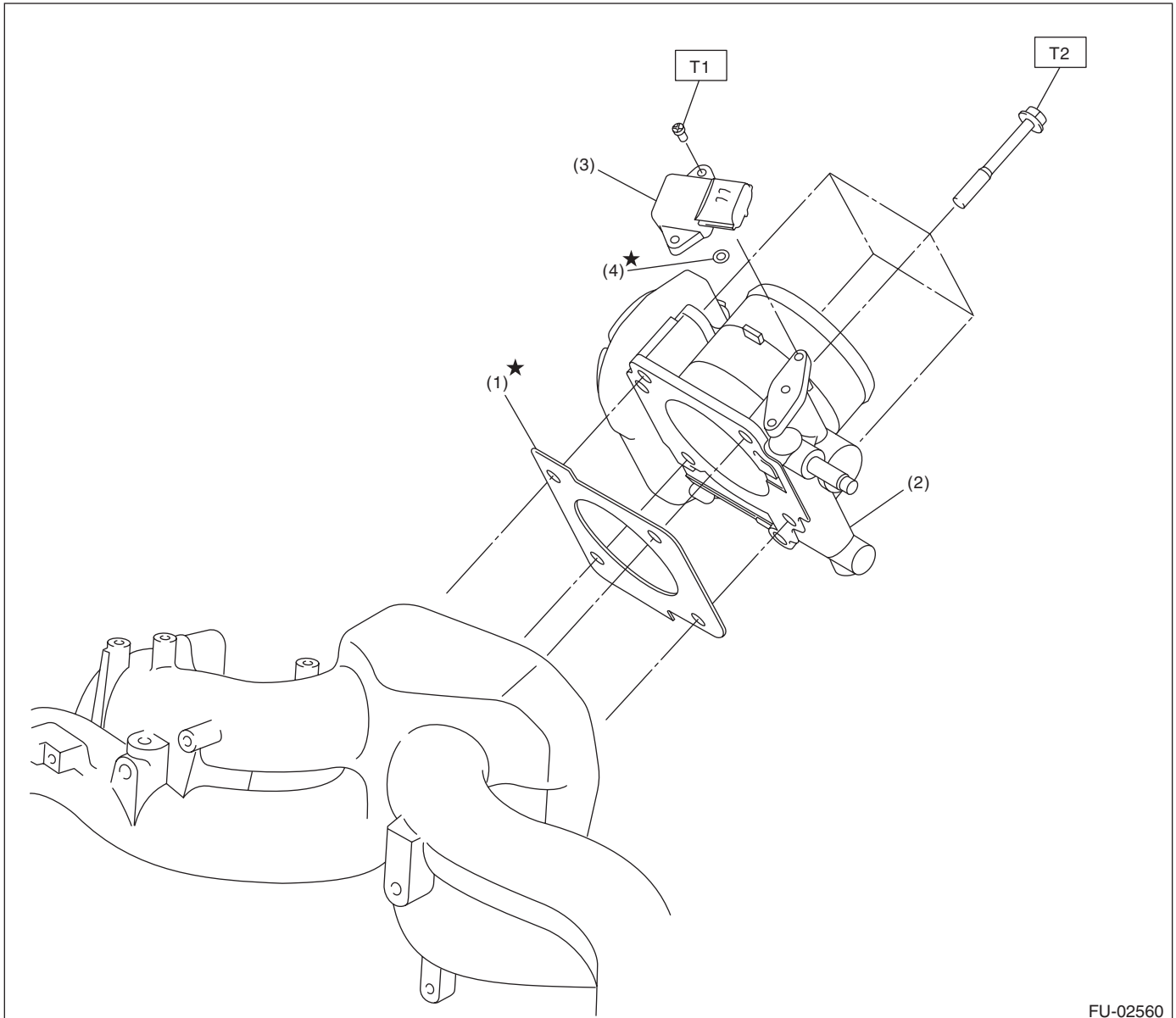
T1: 6.4 (0.65, 4.7)

T2: 17 (1.7, 12.5)

T3: 19 (1.9, 14.0)

T4: 25 (2.5, 18.1)

2. AIR INTAKE SYSTEM



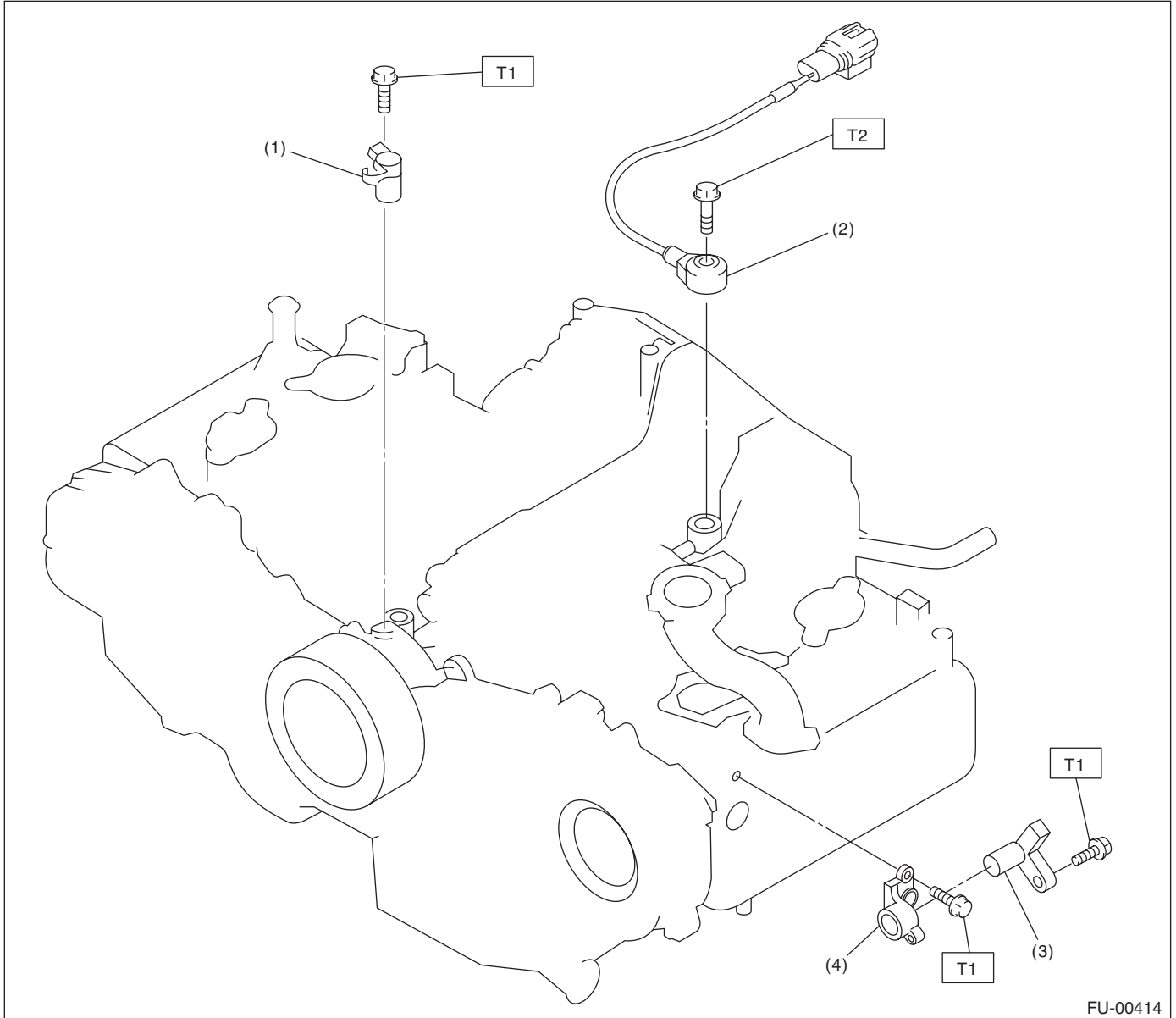
FU-02560

- | | | |
|-------------------|---------------------------------------|---|
| (1) Gasket | (3) Manifold absolute pressure sensor | Tightening torque:N·m (kgf·m, ft·lb) |
| (2) Throttle body | (4) O-ring | T1: 2.0 (0.20, 1.5) |
| | | T2: 8 (0.8, 5.8) |

General Description

FUEL INJECTION (FUEL SYSTEMS)

3. CRANKSHAFT POSITION, CAMSHAFT POSITION AND KNOCK SENSORS



FU-00414

(1) Crankshaft position sensor

(3) Camshaft position sensor

Tightening torque: N·m (kgf·m, ft·lb)

(2) Knock sensor

(4) Camshaft position sensor support

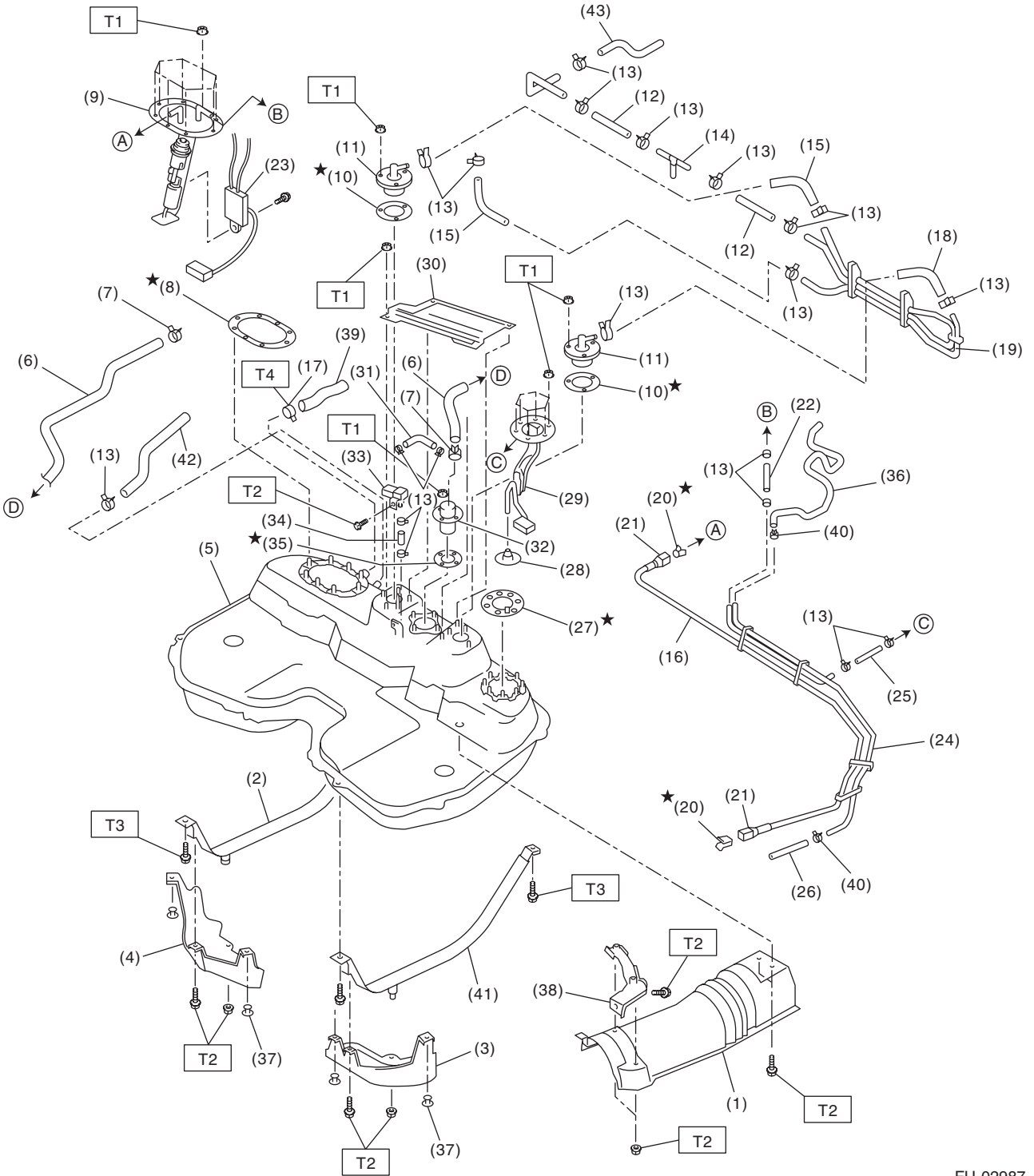
T1: 6.4 (0.65, 4.7)

T2: 24 (2.4, 17.4)

General Description

FUEL INJECTION (FUEL SYSTEMS)

4. FUEL TANK



FU-02987

General Description

FUEL INJECTION (FUEL SYSTEMS)

(1) Heat shield cover	(18) Evaporation hose C	(34) Fuel tank pressure sensor hose
(2) Fuel tank band RH	(19) Evaporation pipe ASSY	(35) Vent valve gasket
(3) Protector LH	(20) Retainer	(36) Purge hose
(4) Protector RH	(21) Quick connector	(37) Clip
(5) Fuel tank	(22) Jet pump hose A	(38) Cover bracket
(6) Canister hose A	(23) Fuel level sensor	(39) Filler hose
(7) Clamp	(24) Fuel pipe ASSY	(40) Clip
(8) Fuel pump gasket	(25) Jet pump hose B	(41) Fuel tank band LH
(9) Fuel pump ASSY	(26) Evaporation hose D	(42) Evaporation hose E
(10) Fuel cut valve gasket	(27) Fuel sub level sensor gasket	(43) Evaporation hose F
(11) Fuel cut valve	(28) Jet pump filter	
(12) Evaporation hose A	(29) Fuel sub level sensor	
(13) Clip	(30) Protect cover	
(14) Joint pipe	(31) Evaporation hose D	
(15) Evaporation hose B	(32) Vent valve	
(16) Fuel delivery tube	(33) Fuel tank pressure sensor	
(17) Clamp		

Tightening torque:N·m (kgf-m, ft-lb)

T1: 4.4 (0.45, 3.3)

T2: 7.4 (0.75, 5.4)

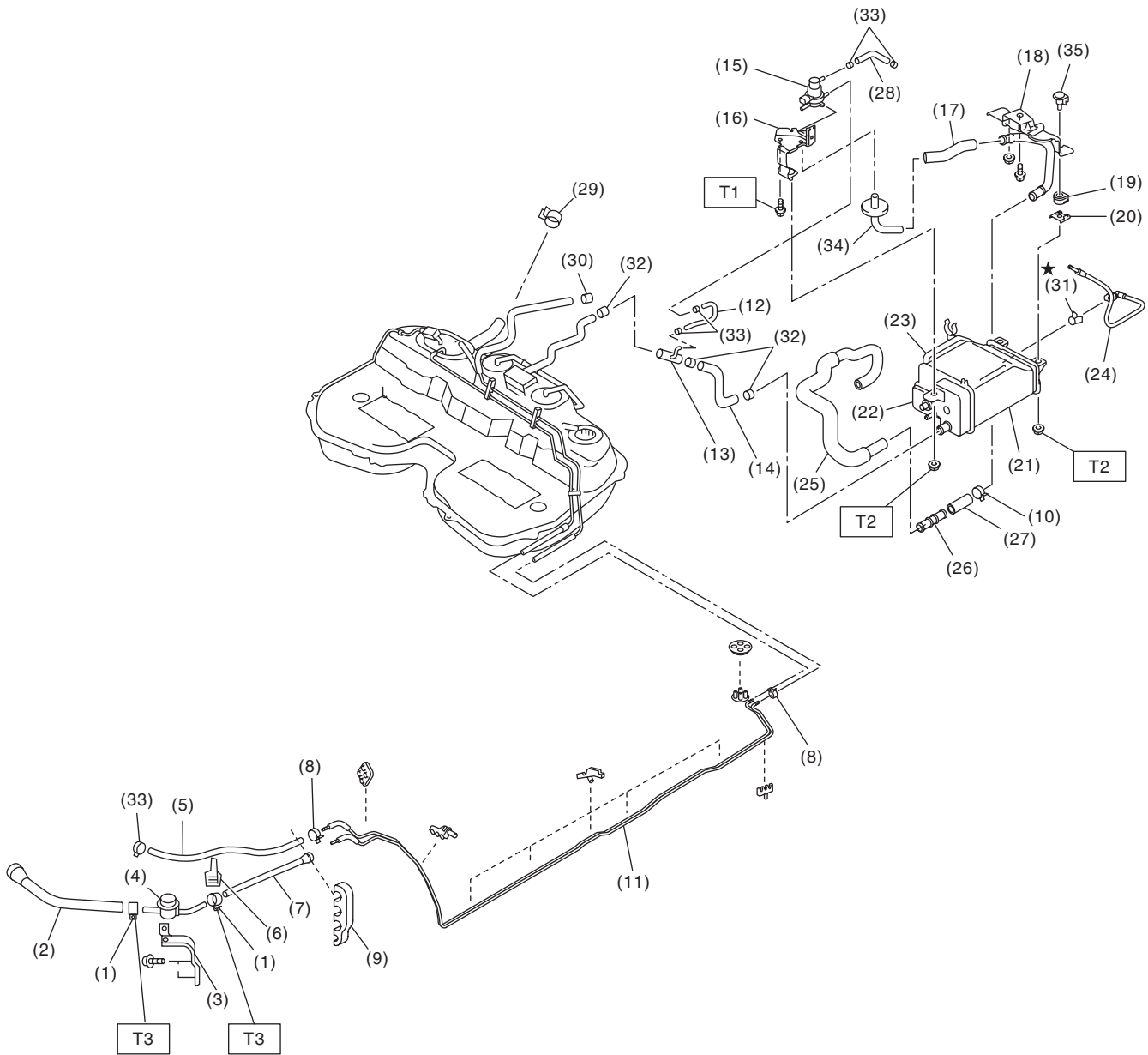
T3: 33 (3.4, 25)

T4: 1.96 (0.20, 1.45)

General Description

FUEL INJECTION (FUEL SYSTEMS)

5. FUEL LINE



FU-02988

FU(H4SO)-8

General Description

FUEL INJECTION (FUEL SYSTEMS)

(1) Clamp	(15) Pressure control solenoid valve	(28) Pressure control solenoid valve hose
(2) Fuel delivery hose A	(16) Pressure control solenoid valve bracket	(29) Clamp
(3) Fuel damper valve bracket	(17) Drain hose C	(30) Clamp
(4) Fuel damper valve	(18) Canister upper bracket	(31) Retainer
(5) Evaporation hose A	(19) Cushion rubber	(32) Clamp
(6) Clip	(20) Canister lower bracket	(33) Clamp
(7) Fuel delivery hose B	(21) Canister	(34) Drain pipe
(8) Clip	(22) Drain valve	(35) Canister bracket spacer
(9) Clip	(23) Drain filter	
(10) Clamp	(24) Pressure control solenoid valve tube	
(11) Fuel pipe ASSY	(25) Drain hose A	
(12) Evaporation hose B	(26) Drain connector	
(13) Joint pipe	(27) Drain hose B	
(14) Canister hose A		

Tightening torque:N·m (kgf-m, ft-lb)

T1: 25 (2.5, 18.1)

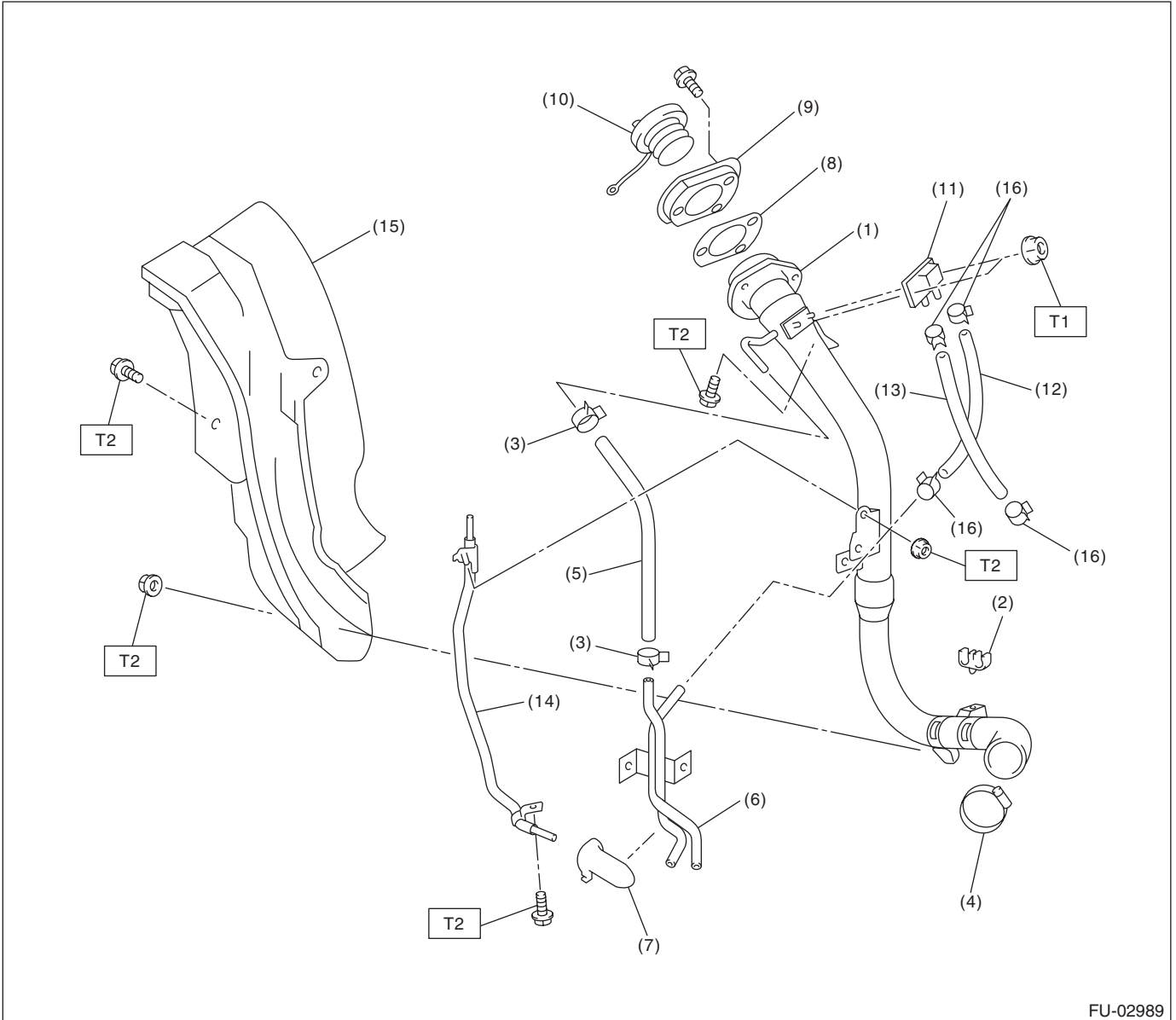
T2: 23 (2.3, 16.6)

T3: 1.25 (0.13, 0.94)

General Description

FUEL INJECTION (FUEL SYSTEMS)

6. FUEL FILLER PIPE



FU-02989

- | | | |
|-----------------------------|-------------------------|---------------------------------|
| (1) Fuel filler pipe ASSY | (8) Filler pipe packing | (15) Fuel filler pipe protector |
| (2) Evaporation hose holder | (9) Filler ring | (16) Clamp |
| (3) Clamp | (10) Filler cap | |
| (4) Clamp | (11) Shut valve | |
| (5) Evaporation hose A | (12) Evaporation hose B | |
| (6) Evaporation pipe | (13) Evaporation hose C | |
| (7) Evaporation pipe holder | (14) Joint pipe | |

Tightening torque: N·m (kgf·m, ft·lb)

T1: 4.4 (0.45, 3.3)

T2: 7.5 (0.76, 5.5)

General Description

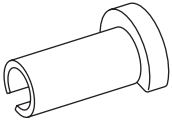
FUEL INJECTION (FUEL SYSTEMS)

C: CAUTION

- Wear appropriate work clothing, including a cap, protective goggles and protective shoes when performing any work.
- Remove contamination including dirt and corrosion before removal, installation or disassembly.
- Keep the disassembled parts in order and protect them from dust and dirt.
- Before removal, installation or disassembly, be sure to clarify the failure. Avoid unnecessary removal, installation, disassembly and replacement.
- Vehicle components are extremely hot after driving. Be wary of receiving burns from heated parts.

- Be sure to tighten fasteners including bolts and nuts to the specified torque.
- Place shop jacks or rigid racks at the specified points.
- Before disconnecting connectors of sensors or units, be sure to disconnect the ground cable from the battery.
- Place "NO FIRE" signs near the working area.
- Prepare a container and cloth to prevent scattering of fuels when performing work where fuels can be spilled. If the fuel spills, wipe it off immediately to prevent from penetrating into floor or flowing out for environmental protection.
- Follow all government and local regulations concerning disposal of refuse when disposing fuel.

D: PREPARATION TOOL

ILLUSTRATION	TOOL NUMBER	DESCRIPTION	REMARKS
 ST42099AE000	42099AE000	CONNECTOR REMOVER	Used for removing the quick connector.