

Identification

IDENTIFICATION

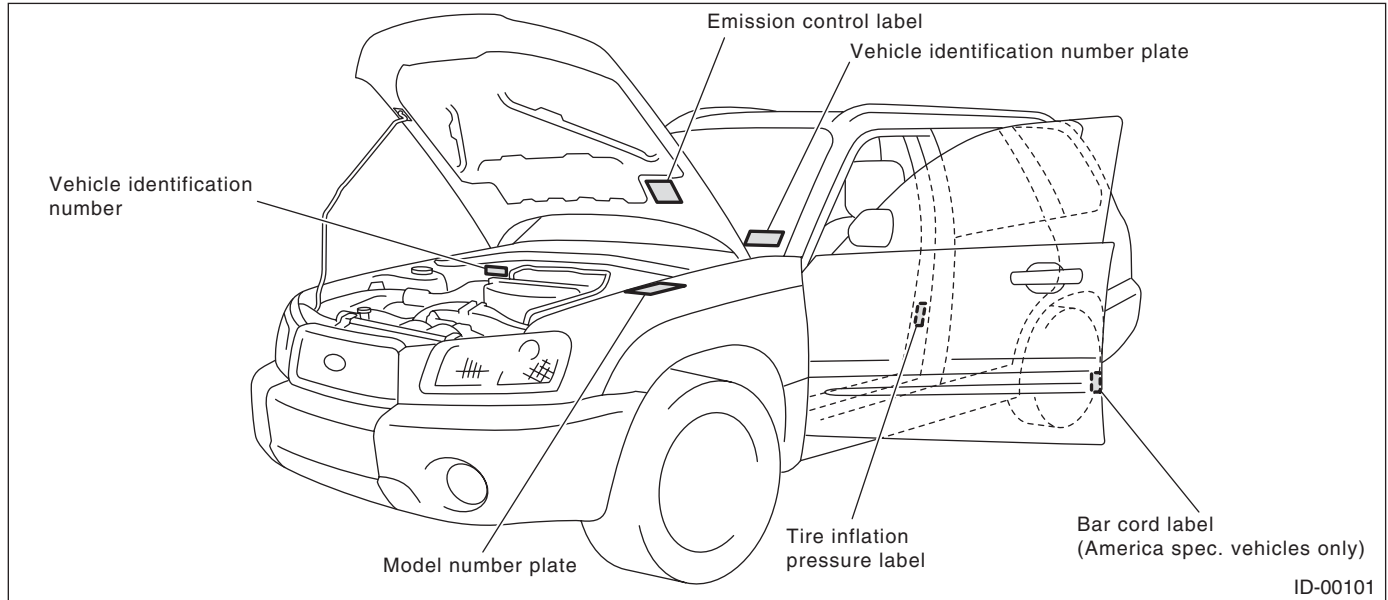
1. Identification

A: IDENTIFICATION

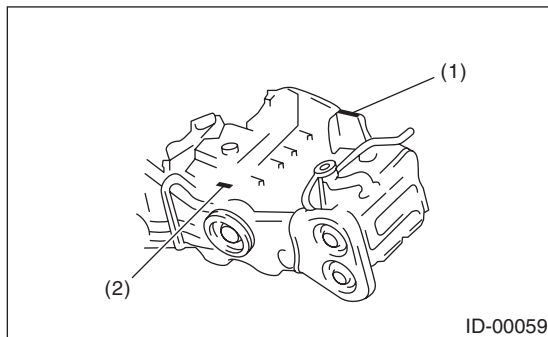
1. IDENTIFICATION NUMBER AND LABEL LOCATIONS

The Vehicle Identification Numbers (V.I.N.) is used to classify the vehicle.

• POSITIONING OF THE PLATE LABEL FOR IDENTIFICATION

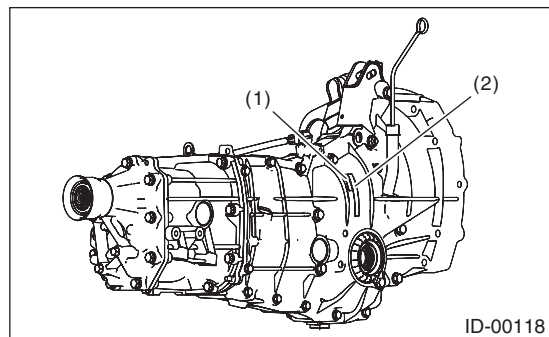


• ENGINE



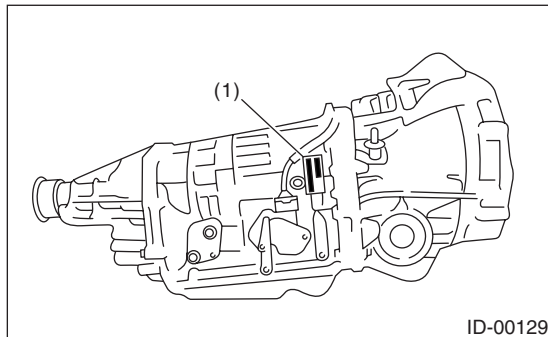
- (1) Engine serial number (Punch mark)
- (2) Engine type (Crankcase upper side)

• MANUAL TRANSMISSION



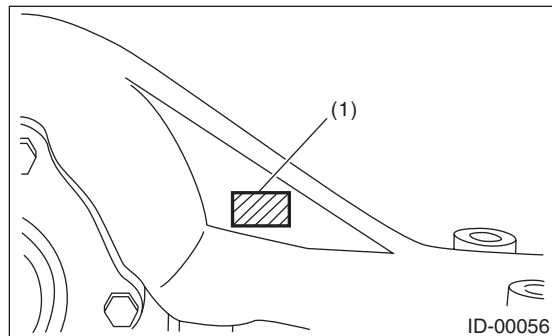
- (1) Transmission serial number
- (2) MT type label

• AUTOMATIC TRANSMISSION



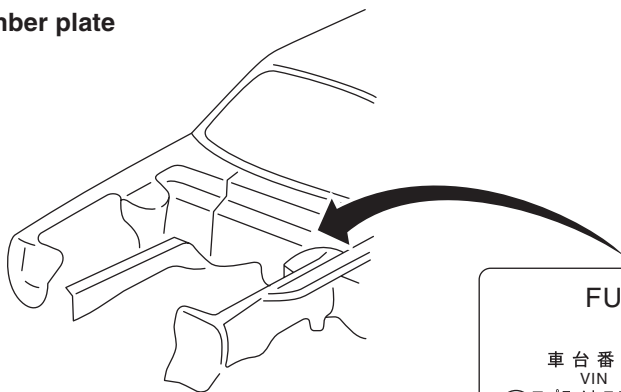
- (1) AT type and transmission serial number label

• REAR DIFFERENTIAL



(1) Type (white paint)

Model number plate



FUJI HEAVY INDUSTRIES LTD.											
型 式 <input type="text"/>											
車台番号		J F 1 S G 6 3 6 X 7 G 7 0 0 0 0 1									
VIN											
アプライトモデル		S G 9 D Y 4 J				オプションコード		U 5 Z K			
applied model						option code					
トリムコード		4 1 0		エンジン型式		E J 2 5 3 B S R H B					
trim code				engine type							
外装飾コード		2 3 0		ミッション型式		T Y 7 5 5 V C 7 A A					
Color code				transmission type							

ID-00152

Identification

IDENTIFICATION

2. MEANING OF V.I.N.

The meaning of the V.I.N. is as follows:

JF1SG636X7G700001

The large parentheses ([]) located in front and back are stop marks.

Digits	Code	Meaning	Details
1 — 3	JF1	Origin of manufacture of body	JF1: FHI manufactured passenger car
4	S	Car line	S: Forester
5	G	Body type	G: Wagon
6	6	Displacement class	6: 2.5 L AWD
7	3	Grade	3: 2.5 X 5: 2.5 XS 7: L.L. Bean 9: 2.5 XT
8	6	Restraint	6: Manual belt, dual airbags, side airbags
9	X	Check numbers	X or 0 — 9
10	7	Model year	7: 2007MY
11	G	Transmission type	G: Full-time AWD 5 speed MT H: Full-time AWD 4 speed AT
12 — 17	700001	Serial number	—

3. MODEL NUMBER PLATE

The model number plate indicates: the applied model, the option code, the trim code, the engine type, the transmission type, and the exterior color code. This information is helpful when placing orders for parts.

SG9EY4J

Digits	Code	Meaning	Details
1	S	Series	S: Forester
2	G	Body type	G: Wagon
3	9	Total engine displacement Drive system	9: 2.5 L AWD
4	E	Model year	E: 2007MY
5	Y	Destination	Y: U.S.A., Canada
6	4	Grade	4: 2.5 X 6: 2.5 XS 9: 2.5 XT C: L.L. Bean
7	J	Transmission, fuel feed system	D: DOHC turbo MFI 5 speed MT J: SOHC MFI 5 speed MT P: DOHC turbo MFI 4 speed AT R: SOHC MFI 4 speed AT

Identification

IDENTIFICATION

The engine and transmission type are as follows.

Engine

EJ253ASQFB

Digits	Code	Meaning	Details
1 and 2	EJ	Engine type symbol	EJ: 4 cylinder
3 and 4	25	Displacement class	25: 2.5 L
5	3	Fuel feed system	3: MFI non-turbo (SOHC) 5: MFI DOHC turbo
6	A	Exhaust regulations	A: For states not using California emission standards B: For all states C: For states using California emission standards
7	S	Mounted transmission	P: AT S: MT
8 — 10	QFB	Detailed specifications	Used for ordering parts. Refer to parts catalog for details.

Transmission

TY755VC7AA

Digits	Code	Meaning	Details
1	T	Transmission	T: Transmission
2	Y	Transmission system	V: Full-time AWD AT center differential (VTD) Y: Full-time AWD MT center differential Z: Full-time AWD AT MPT
3 and 4	75	Classification	1B: AT 75: MT
5	5	Series	5: MT, AT
6	V	Transmission basic specifications	L: MP-T full-time AWD direct 4 speed AT M: VTD center differential full-time AWD direct 4 speed AT V: Full-time AWD 5 speed MT single range with viscous coupling center differential
7	C	Installed body	C: 2.5 L SOHC B: 2.5 L DOHC turbo 5 speed MT W: 2.5 L DOTC turbo 4 speed AT
8 — 10	7AA	Detailed specifications	Used for ordering parts. Refer to parts catalog for details.

Rear differential

T2

Code	Reduction gear ratio	LSD
T2	4.111	None
JP	4.111	Viscous
TP	4.444	None
CF	4.444	Viscous

Option code

U5ZK

Digits	Code	Meaning	Details
1 — 2	U5	Destination	U5: U.S. (for states using California emission standards) U6: U.S. (for states not using California emission standards) U4: U.S. (for all states) CO: Canada
3 — 4	ZK	Vehicle main options	—

Identification

IDENTIFICATION
