

ATTENTION:
GENERAL MANAGER PARTS MANAGER
CLAIMS PERSONNEL SERVICE MANAGER
IMPORTANT - All Service Personnel Should Read and Initial



WARRANTY BULLETIN

APPLICABILITY: All Manual Transmission Vehicles
SUBJECT: Warranty Information Update

NUMBER: 01-156-03
DATE: 11/18/03

INTRODUCTION

This bulletin reinforces Subaru of America's (SOA) position regarding repairs to Subaru vehicles necessitated by vehicle modifications, racing or abusive driving habits.

Under normal driving conditions SOA warrants wear items such as clutch discs and brake pads under the terms of the Basic New Car Warranty. If a clutch disc or a brake pad needs to be replaced at low mileage, the dealership must satisfy itself that the replacement is not the result of one of the exclusions listed in the CDS Policy, Guidelines and Procedures Manual and the Owner's Warranty Maintenance Manual.

Reference: CDS Policy, Guidelines and Procedures Manual

Sections: 8.1.10, 8.2.6.7 and 8.2.7.10

Reference: 2004 Warranty and Maintenance Manual

Pages 13 and 14

Other components that may require repair due to abuse, racing or unauthorized modifications include, but are not limited to:

- Transmission
- Differential
- Propeller Shaft
- Axle, Front or Rear
- Engine
- Emission System
- Suspension components
- Tires

If a determination for the cause of the failure cannot be made, the dealer must consult its **District Service Operations Manager** for authorization **prior** to proceeding with repairs under warranty.



CAUTION: VEHICLE SERVICING PERFORMED BY UNTRAINED PERSONS COULD RESULT IN SERIOUS INJURY TO THOSE PERSONS OR TO OTHERS.

Subaru Service Bulletins are intended for use by professional technicians ONLY. They are written to inform those technicians of conditions that may occur in some vehicles, or to provide information that could assist in the proper servicing of the vehicle. Properly trained technicians have the equipment, tools, safety instructions, and know-how to do the job correctly and safely. If a condition is described, DO NOT assume that this Service Bulletin applies to your vehicle, or that your vehicle will have that condition.



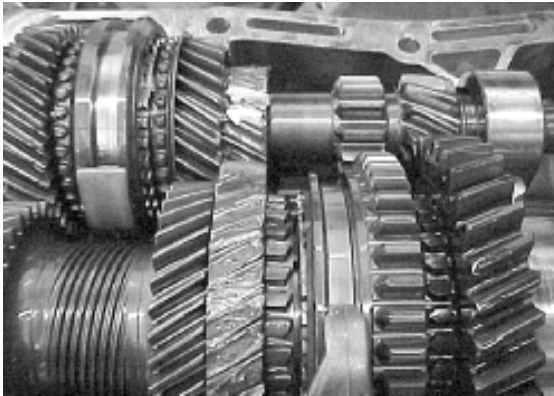
Some examples of abusive driving are exceeding maximum recommended RPMs, excessive torque transferred to the transmission during acceleration from a complete stop (dumping the clutch), downshifting at high RPMs and missing shifts.

The term "racing" refers to all forms of racing whether street, drag, rally, sanctioned or unsanctioned, etc. Any damage that results from racing is not warrantable.

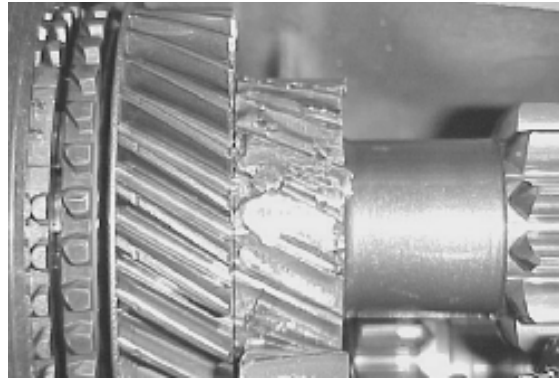
EXAMPLES

The photos below depict some results of abusive driving.

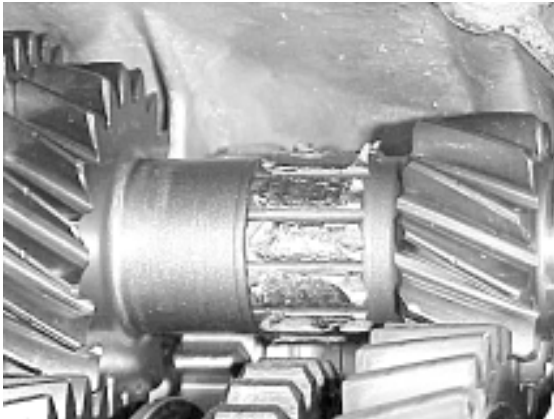
Second Gear Teeth Missing



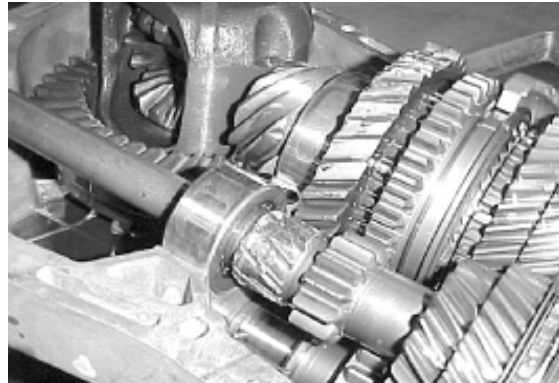
Second Gear Teeth Missing



Reverse Gear Teeth Stripped



First Gear Teeth Stripped from Mainshaft



6-Speed 1-2 Shift Interlock Arm Broken

