

ATTENTION:

- GENERAL MANAGER
- PARTS MANAGER
- CLAIMS PERSONNEL
- SERVICE MANAGER

IMPORTANT - All Service Personnel Should Read and Initial in the boxes provided, right.



SUBARU[®]

QUALITY DRIVEN[®] SERVICE

SERVICE BULLETIN

APPLICABILITY: All Models Equipped with an In-dash CD Changer/Player
SUBJECT: In-dash CD Changer/Player Discs

NUMBER: 15-120-07
DATE: 03/07/07

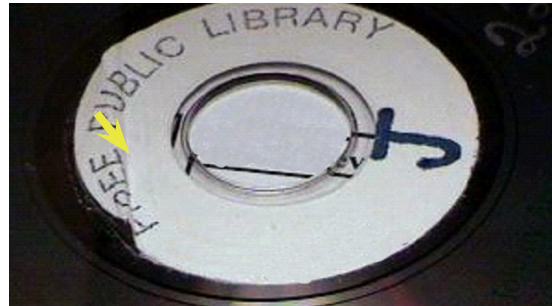
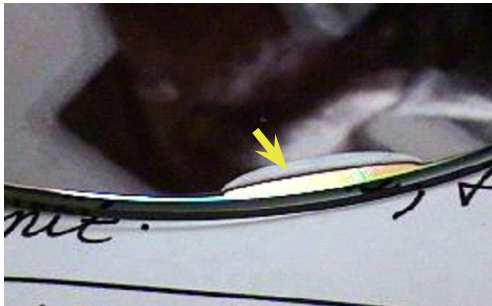
INTRODUCTION

The purpose of this bulletin is to inform of cautions concerning compact discs. There have been an increasing number of changers/players being replaced under warranty. We have found that the majority of all failures are the result of the use of damaged CDs, non-compatible user-created CDs and labels, or multiple CDs inserted at the same time jamming the player or damaging the CD. The resultant damage to the player is generally not detected until after the audio exchange has been completed.

Customers coming in with CD changer/player issues should be reminded at the time of the unit exchange that the use of CDs as described above are the potential causes of problems.

We encourage you to make a copy of page 3 of this bulletin and provide it to your customers when an exchange unit is installed.

EXAMPLES OF PEELING LABELS



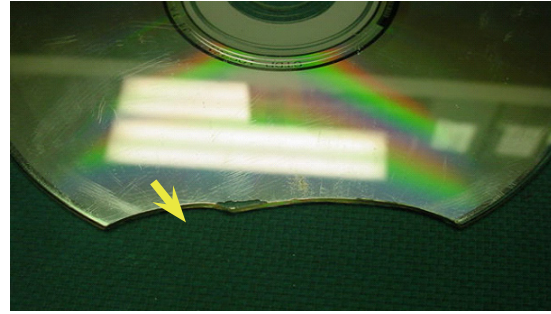
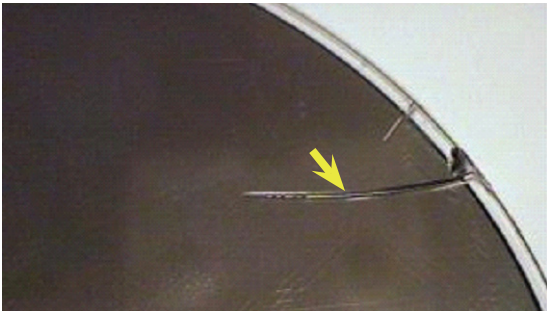
continued...

CAUTION: VEHICLE SERVICING PERFORMED BY UNTRAINED PERSONS COULD RESULT IN SERIOUS INJURY TO THOSE PERSONS OR TO OTHERS.

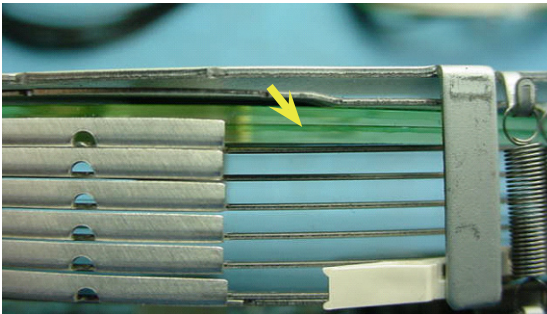
Subaru Service Bulletins are intended for use by professional technicians ONLY. They are written to inform those technicians of conditions that may occur in some vehicles, or to provide information that could assist in the proper servicing of the vehicle. Properly trained technicians have the equipment, tools, safety instructions, and know-how to do the job correctly and safely. If a condition is described, DO NOT assume that this Service Bulletin applies to your vehicle, or that your vehicle will have that condition.



EXAMPLES OF BROKEN/CRACKED DISCS



EXAMPLE OF DOUBLE-DISC INSERTION



EXAMPLE OF ODD-SHAPED DISC





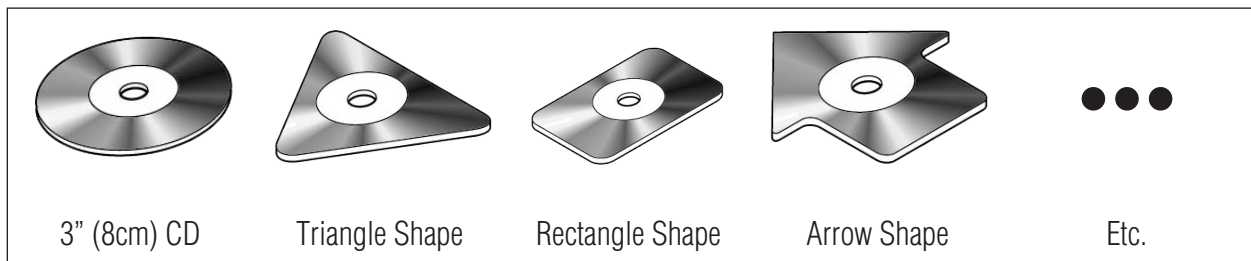
PLEASE USE CAUTION WHEN USING YOUR GENUINE SUBARU IN-DASH CD CHANGER/PLAYER

In-dash compact disc (CD) players are a great way to enjoy crystal-clear music in your Subaru. Subaru CD players are designed to play standard 4 3/4 inch diameter CDs, which carry the “Compact Disc Digital Audio” logo.

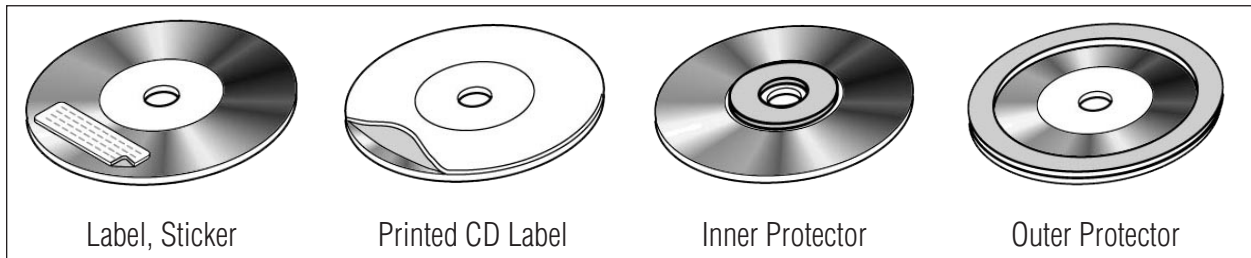


The following CDs may cause problems when loading, playing, or ejecting due to the complexity of your CD player’s internal mechanisms.

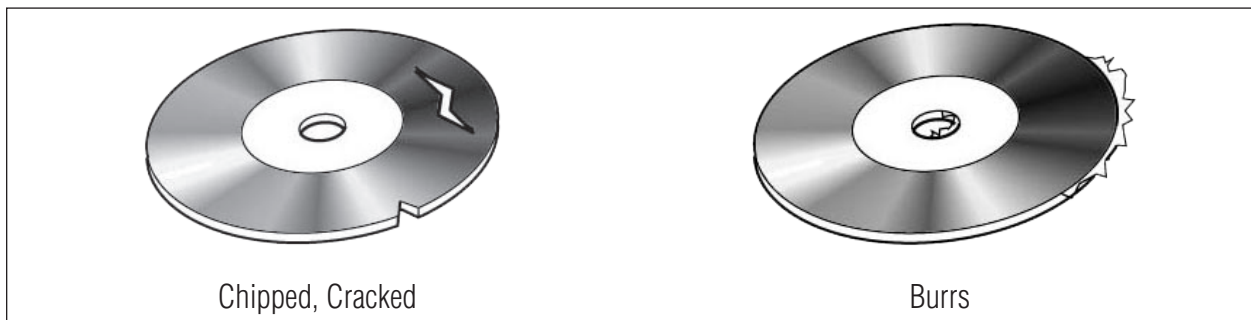
1. Small size, irregularly shaped discs.



2. Excessively thick discs.



3. Damaged Discs



4. Poor quality discs.