

General Description

CONTROL SYSTEMS

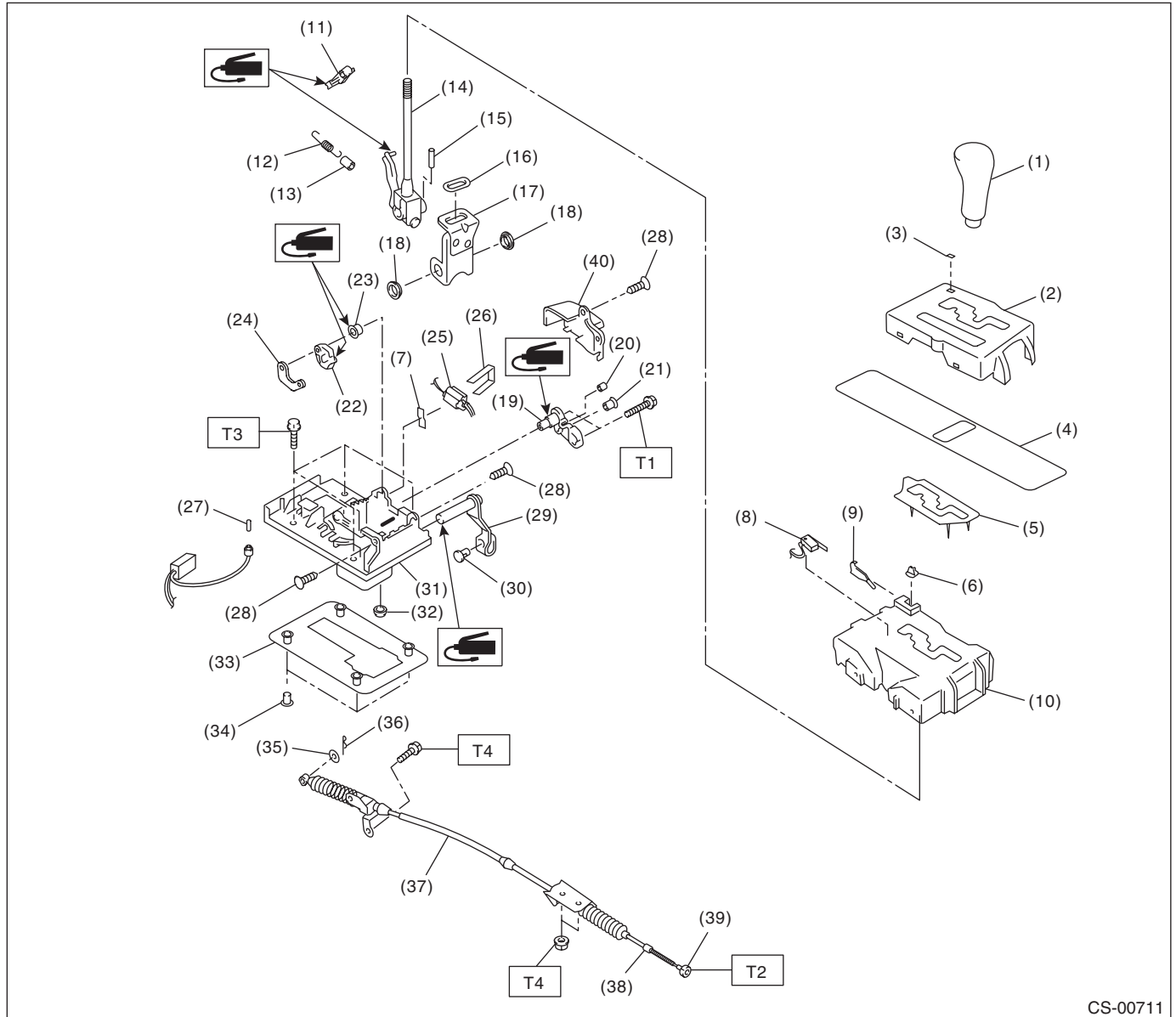
1. General Description

A: SPECIFICATION

Item		Specification
Swing torque of rod against lever	N (kgf, lb)	3.7 (0.38, 0.84) or less

B: COMPONENT

1. AT SELECT LEVER



CS-00711

General Description

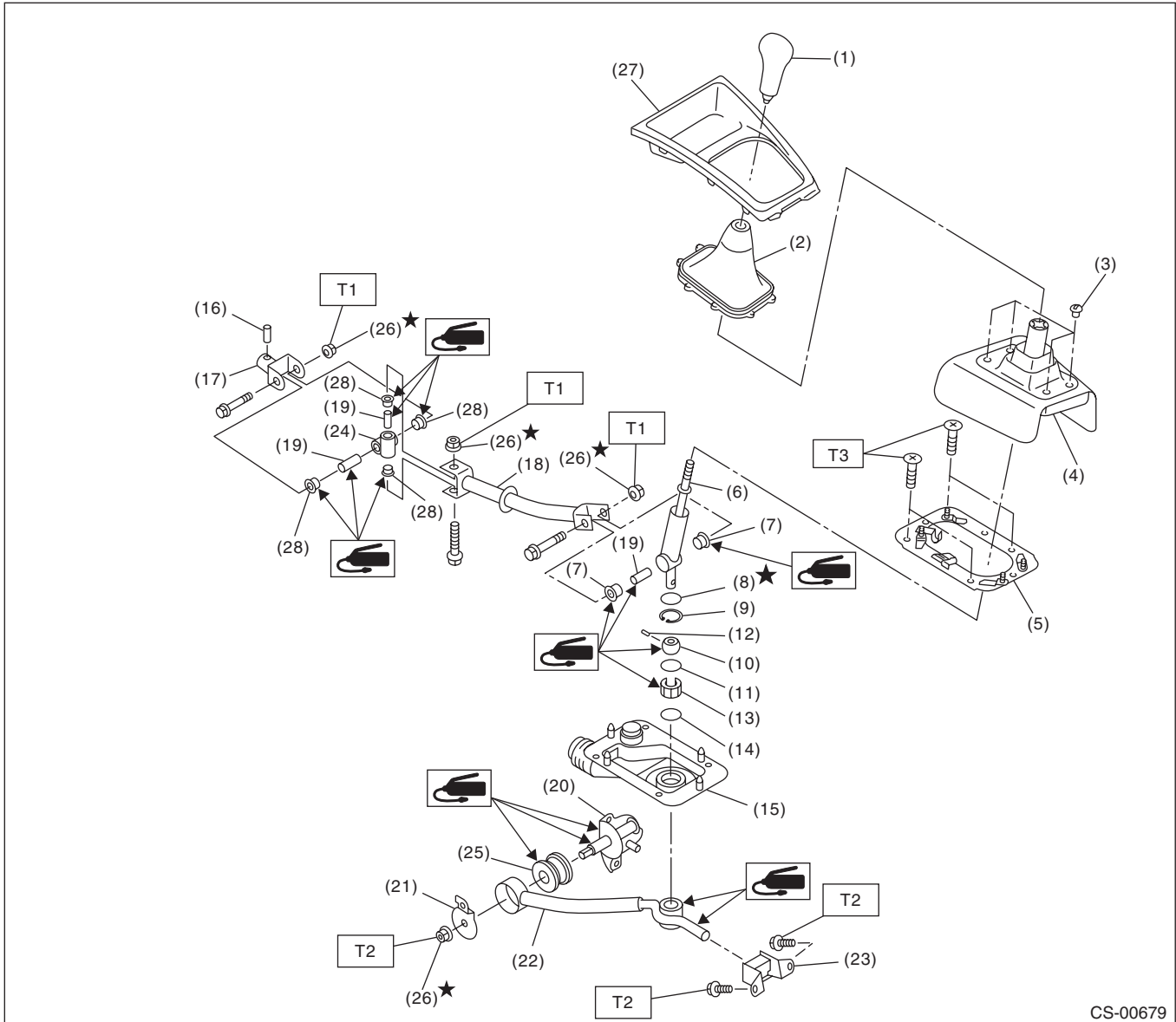
CONTROL SYSTEMS

(1) Grip	(17) Bracket	(32) Grommet
(2) Indicator cover	(18) Bushing	(33) Packing
(3) Cover	(19) Lock plate B	(34) Spacer
(4) Blind	(20) Bushing	(35) Washer
(5) Cushion	(21) Bushing	(36) Snap pin
(6) Button	(22) Lock plate A	(37) Select cable
(7) Cushion	(23) Bushing	(38) Adjusting nut B
(8) P range switch	(24) Lock plate C	(39) Adjusting nut A
(9) Spring	(25) Shift lock solenoid	(40) Cover
(10) Guide plate	(26) Clamp	
(11) Detent arm	(27) Indicator bulb	<hr/> Tightening torque: N·m (kgf·m, ft·lb)
(12) Detent spring	(28) Clip	T1: 2.0 (0.2, 1.4)
(13) Tube	(29) Select lever arm	T2: 7.5 (0.76, 5.5)
(14) Selector lever COMPL	(30) Bushing COMPL	T3: 13 (1.3, 9.4)
(15) Spring pin	(31) Base plate	T4: 18 (1.8, 13.0)
(16) Bushing		<hr/>

General Description

CONTROL SYSTEMS

2. MT GEAR SHIFT LEVER



CS-00679

- | | | |
|-----------------------------|-----------------|-----------------------|
| (1) Gear shift knob | (12) Spring pin | (23) Cushion rubber |
| (2) Console boot | (13) Bushing B | (24) Boss |
| (3) Clamp | (14) O-ring | (25) Bushing |
| (4) Boot and insulator ASSY | (15) Boot | (26) Self-locking nut |
| (5) Plate ASSY | (16) Spring pin | (27) Front cover |
| (6) Lever | (17) Joint | (28) Bushing |
| (7) Bushing | (18) Rod | |
| (8) Lock wire | (19) Spacer | |
| (9) Snap ring | (20) Bracket | |
| (10) Bushing | (21) Washer | |
| (11) O-ring | (22) Stay | |
| | | (23) Cushion rubber |

Tightening torque: N-m (kgf-m, ft-lb)

T1: 12 (1.2, 8.9)

T2: 18 (1.8, 13.3)

T3: 7.5 (0.76, 5.5)

C: CAUTION

- Wear appropriate work clothing, including a cap, protective goggles and protective shoes when performing any work.
- Remove contamination including dirt and corrosion before removal, installation or disassembly.
- Keep the disassembled parts in order and protect them from dust and dirt.
- Before removal, installation or disassembly, be sure to clarify the failure. Avoid unnecessary removal, installation, disassembly and replacement.
- Use SUBARU genuine fluid, grease etc. or equivalent. Do not mix fluid, grease, etc. of different grades or manufacturers.
- Be sure to tighten fasteners including bolts and nuts to the specified torque.
- Place shop jacks or rigid racks at the specified points.
- Apply grease onto sliding or revolving surfaces before installation.
- Before installing O-rings or snap rings, apply sufficient amount of grease to avoid damage and deformation.
- Before securing a part on a vise, set cushioning material such as wood blocks, aluminum plate, or shop cloth between the part and the vise.
- Before disconnecting electrical connectors, be sure to disconnect the negative terminal from battery.