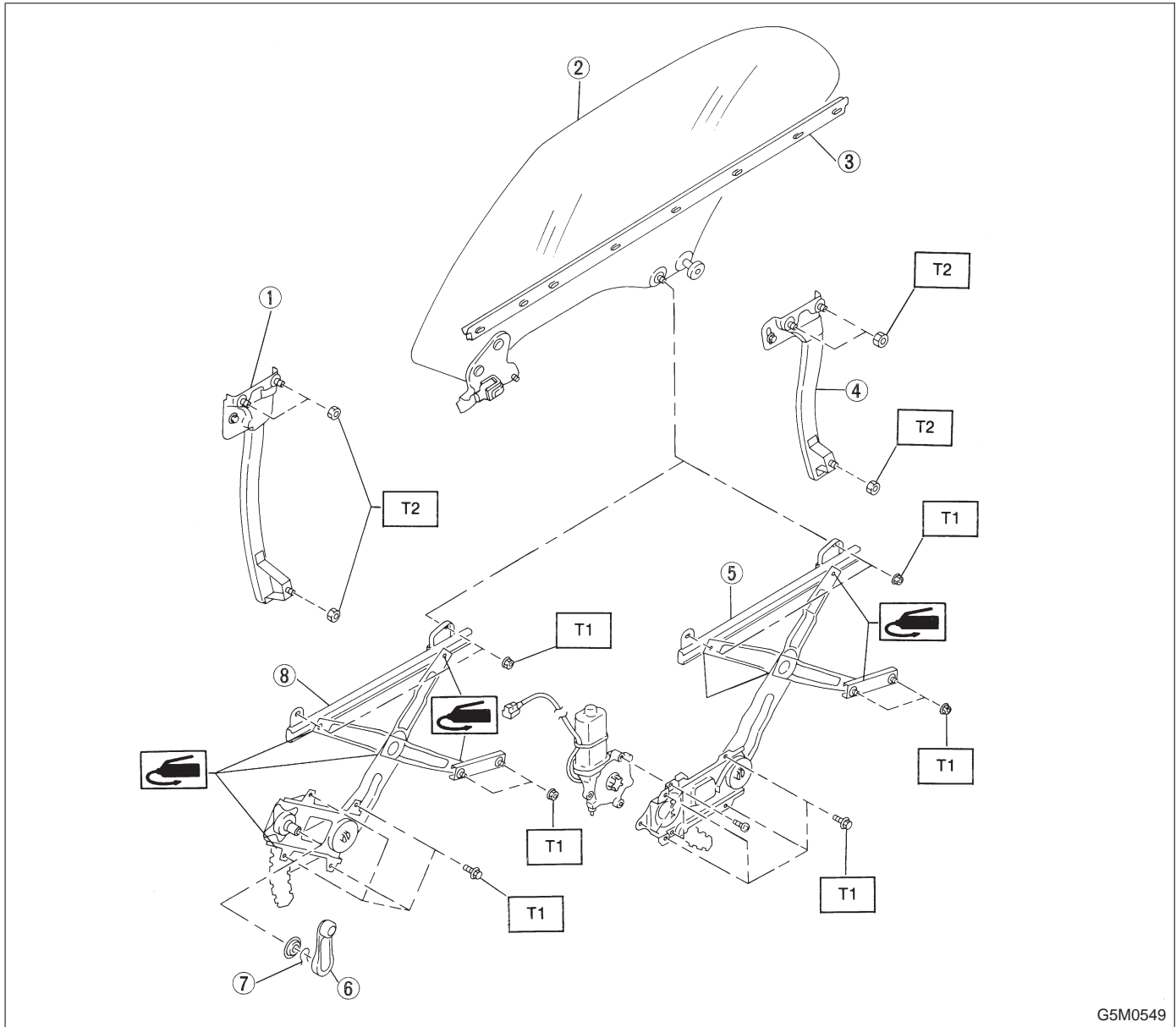


4. Rear Door Glass



- ① Door sash (Front)
- ② Glass
- ③ Weatherstrip (Inner)
- ④ Door sash (Rear)
- ⑤ Regulator and motor ASSY

- ⑥ Regulator handle
(Except power window)
- ⑦ Retainer spring
- ⑧ Regulator ASSY

Tightening torque: N-m (kg-m, ft-lb)
T1: 5.4 — 9.3
(0.55 — 0.95, 4.0 — 6.9)
T2: 10 — 18 (1.0 — 1.8, 7 — 13)