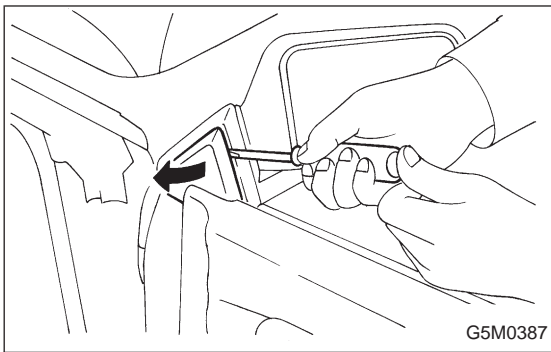


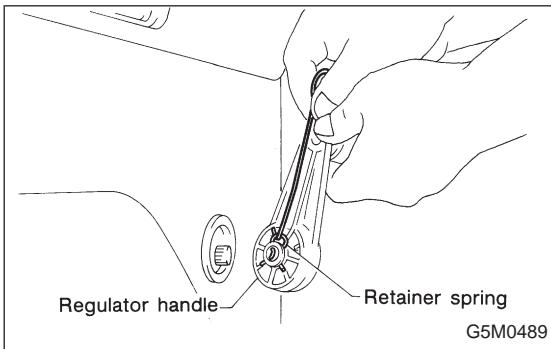
3. Trim Panel

A: REMOVAL AND INSTALLATION

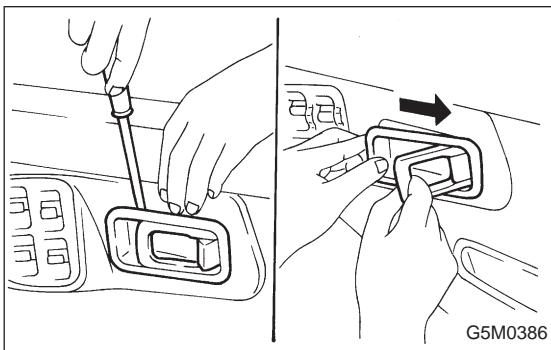
1) Remove gusset cover.



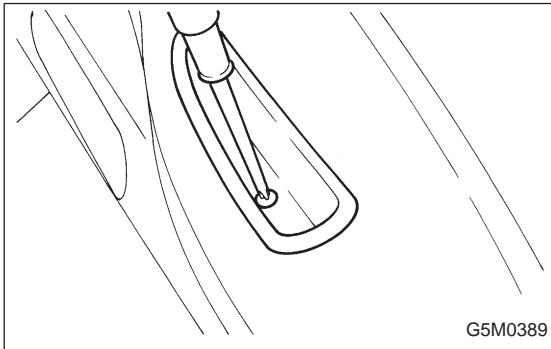
2) Remove retainer spring and then regulator handle. Use a wire bent at one end, as shown in figure, for easier removal of retainer spring. (models without power window)



3) Remove remote handle cover.



4) Remove pull handle attaching screw and then remove pull handle.



5) Using ST, disengage the clip.

ST 925580000 PULLER

6) Remove trim panel and then disconnect connector. (models with power window)

CAUTION:

Be careful not to break clip by applying undue force.

Installation is in the reverse order of removal.

