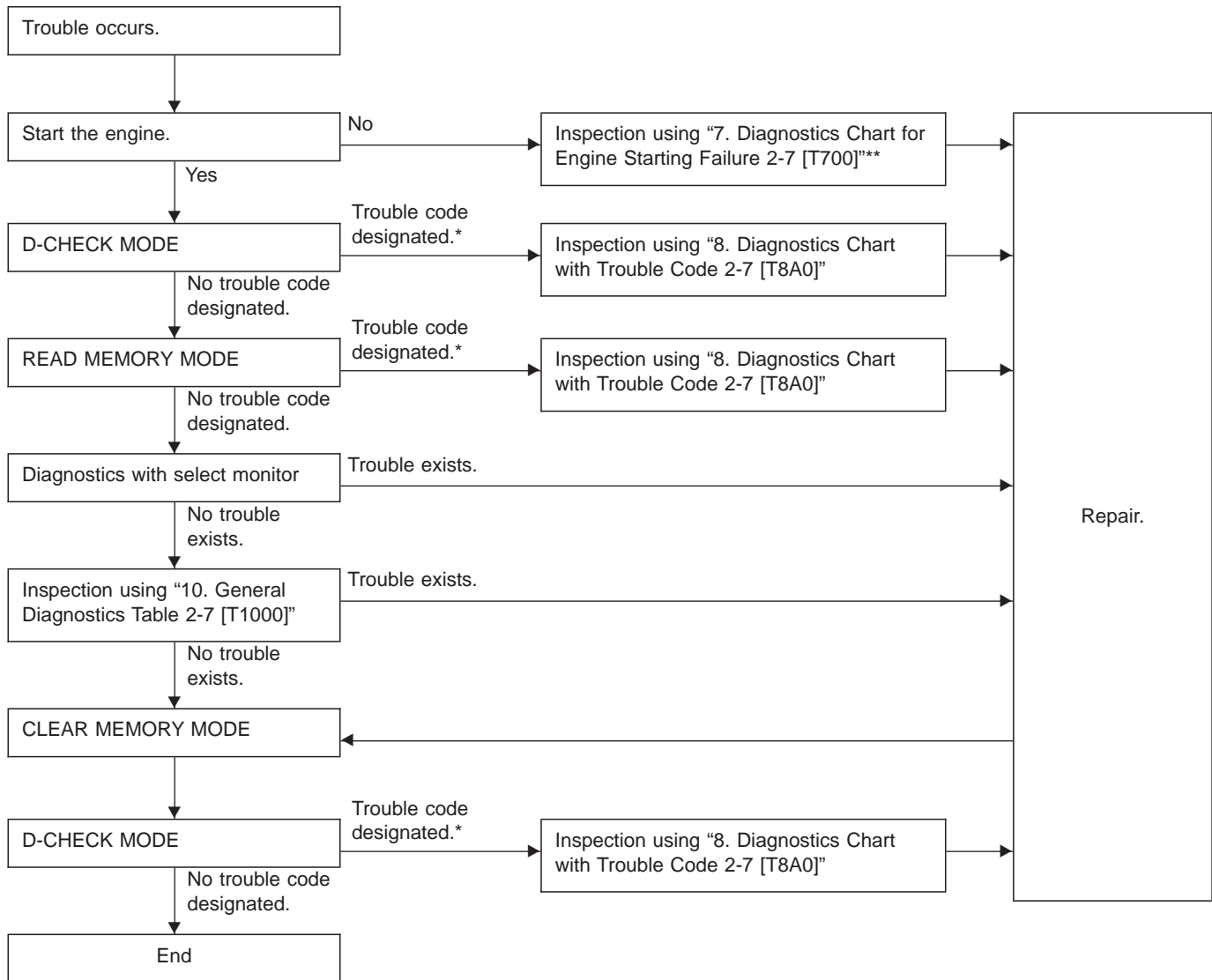


5. Diagnostics Chart for On-board Diagnosis System

A: BASIC DIAGNOSTICS PROCEDURE



*: When more than one trouble code is out-putted, begin diagnostics with the smallest trouble code number and proceed to the next higher code.

After correcting each problem, conduct the D-CHECK and ensure that the corresponding trouble code no longer appears.

** : When a trouble code is displayed in the READ MEMORY MODE, conduct diagnostics measures which correspond with the code.

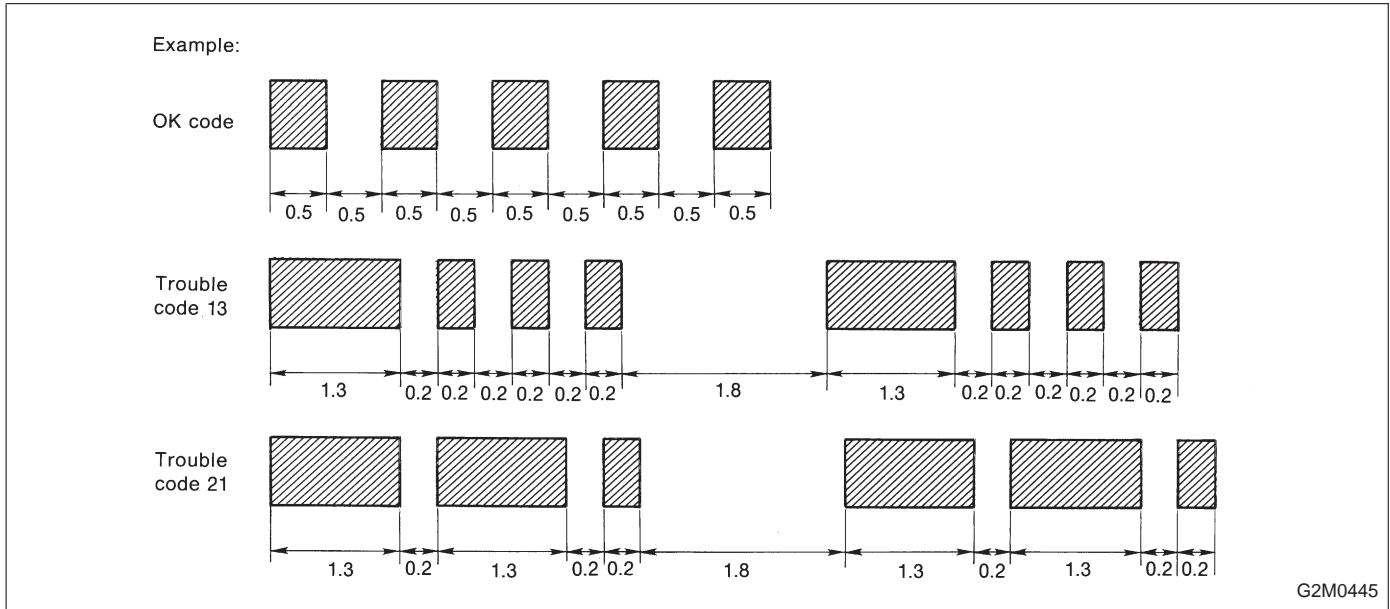
CAUTION:

- Check the connector while it is connected unless specified otherwise.
- Be sure to check again from the beginning in order to prevent secondary trouble caused by repair work.

B: TROUBLE CODE

1. HOW TO READ TROUBLE CODE

The malfunction indicator lamp flashes the code corresponding to the faulty parts. The long segment (1.3 seconds ON) indicates a "ten", and the short segment (0.2 seconds ON) signifies "one". And middle segment (0.5 seconds ON) means OK code.

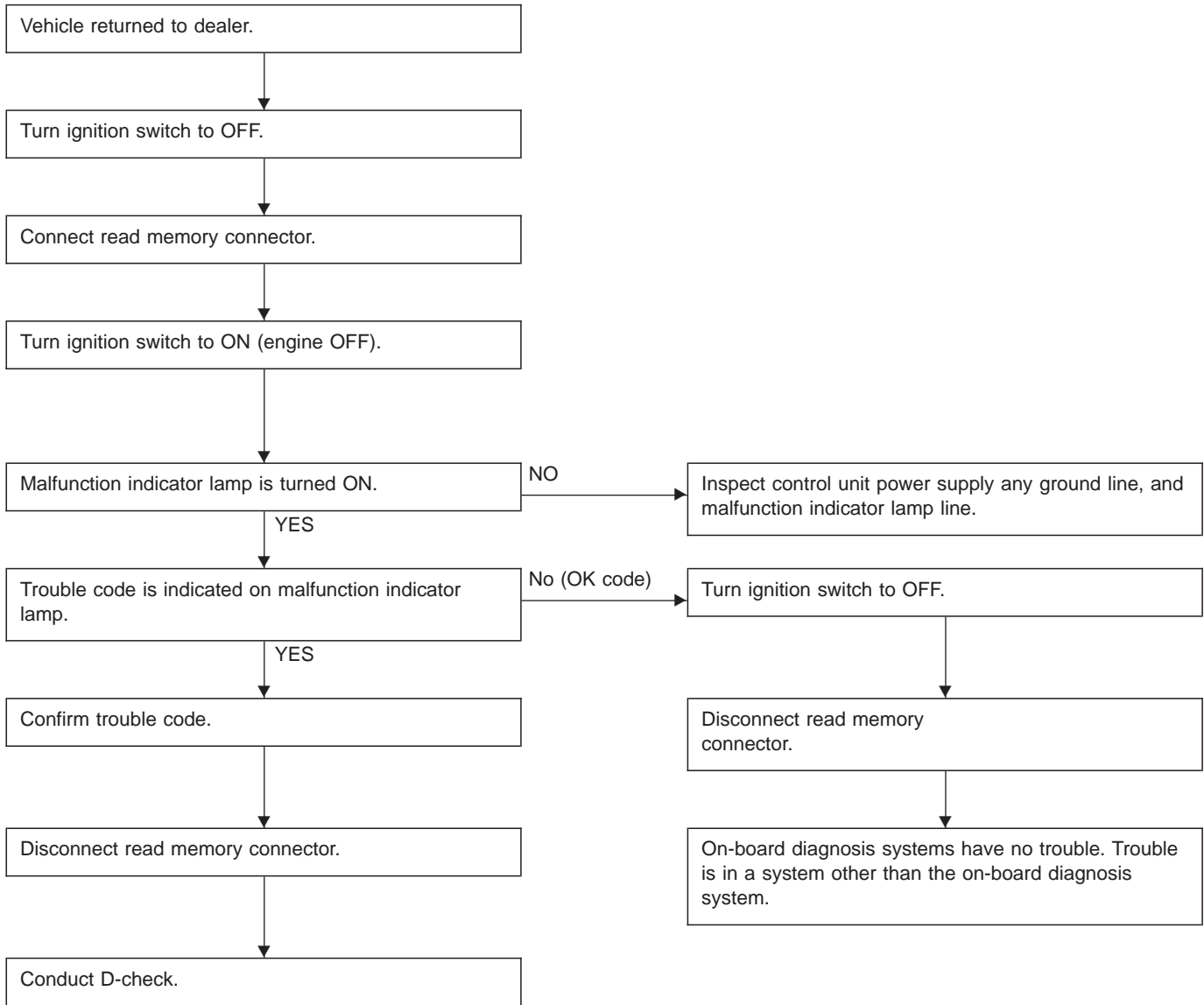


2. LIST OF TROUBLE CODE

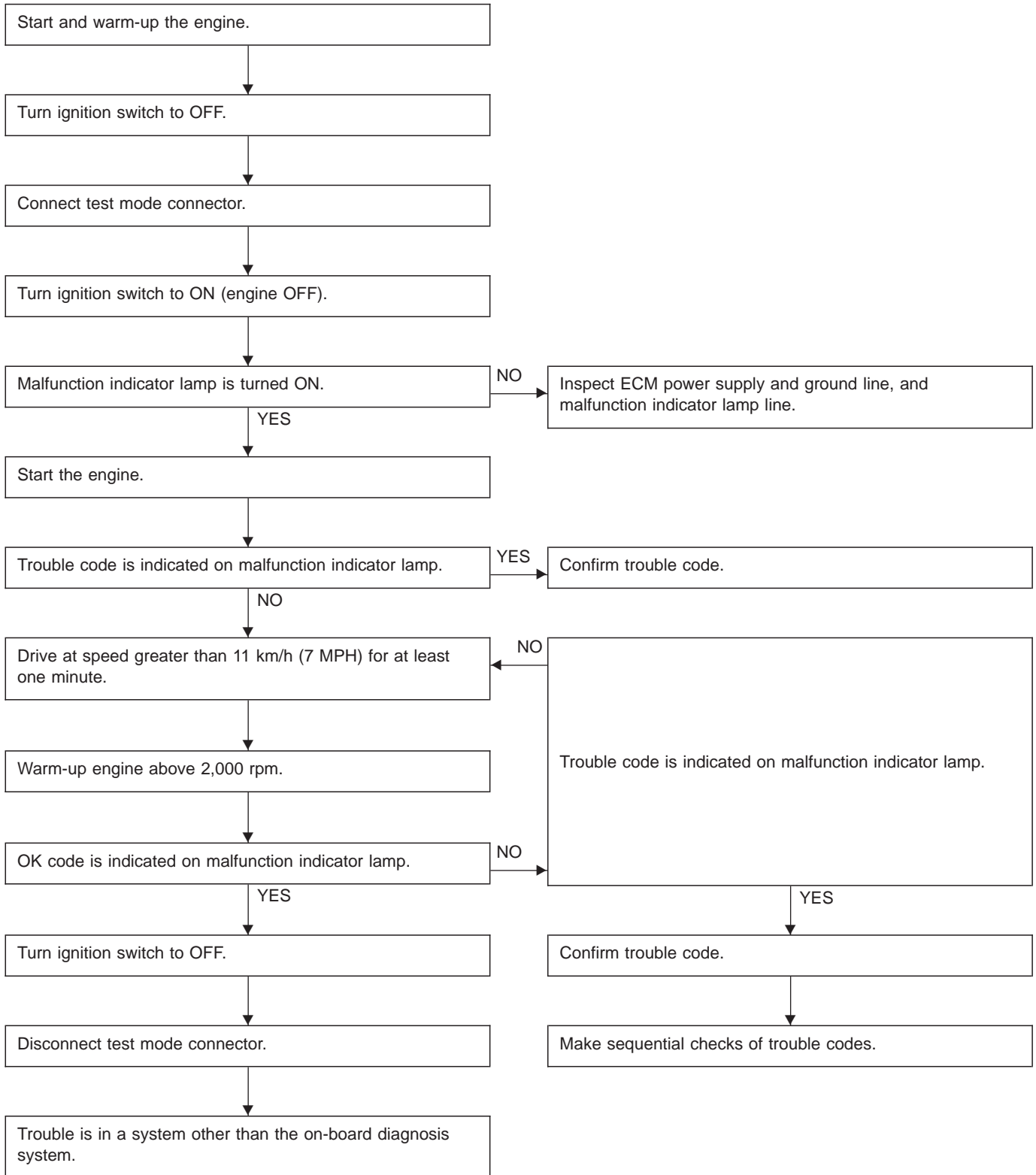
Trouble code	Item	Contents of diagnosis
11	Crankshaft position sensor	No signal entered from crankshaft position sensor, but signal entered from camshaft position sensor.
12	Starter switch	<ul style="list-style-type: none"> ● The starter switch signal is abnormal. ● The harness connector between ECM and starter switch is in short or open.
13	Camshaft position sensor	No signal entered from camshaft position sensor, but signal entered from crankshaft position sensor.
14	Fuel injector # 1	Fuel injection is not in function. (Abnormal signal emitted from monitor circuit.)
15	Fuel injector # 2	
16	Fuel injector # 3	
17	Fuel injector # 4	
21	Engine coolant temperature sensor	<ul style="list-style-type: none"> ● The engine coolant temperature sensor signal is abnormal. ● The harness connector between ECM and engine coolant temperature sensor is in short or open.
23	Mass air flow sensor	<ul style="list-style-type: none"> ● The mass air flow sensor signal is abnormal. ● The harness connector between ECM and mass air flow sensor is in short or open.
24	Idle air control solenoid valve	<ul style="list-style-type: none"> ● The idle air control solenoid valve is not in function. ● The harness connector between ECM and idle air control solenoid valve is in short or open.
31	Throttle position sensor	<ul style="list-style-type: none"> ● The throttle position sensor signal is abnormal. ● The harness connector between ECM and throttle position sensor is in short or open.
32	Oxygen sensor	<ul style="list-style-type: none"> ● The oxygen sensor is not in function. ● The harness connector between ECM and oxygen sensor is in short or open.
33	Vehicle speed sensor 2	<ul style="list-style-type: none"> ● The vehicle speed sensor 2 is not in function. ● The harness connector between ECM and vehicle speed sensor 2 is in short or open.
34	EGR solenoid valve	<ul style="list-style-type: none"> ● The EGR solenoid valve is not in function. ● The harness connector between ECM and EGR solenoid valve is in short or open.
35	Purge control solenoid valve	<ul style="list-style-type: none"> ● The purge control solenoid valve is not in function. ● The harness connector between ECM and purge control solenoid valve is in short or open.
36	Air suction solenoid valve	<ul style="list-style-type: none"> ● The air suction solenoid valve is not in function. ● The harness connector between ECM and air suction solenoid valve is in short or open.
41	A/F (air/fuel) learning control	Faulty leaning control function
51	Neutral position switch (MT)	<ul style="list-style-type: none"> ● The neutral position switch signal is abnormal. ● The harness connector between ECM and neutral position switch is in short or open.
	Inhibitor switch (AT)	<ul style="list-style-type: none"> ● The inhibitor switch signal is abnormal. ● The harness connector between ECM and inhibitor switch is in short or open.
55	Recirculation gas temperature sensor	<ul style="list-style-type: none"> ● Recirculation gas temperature sensor is not in function. ● The harness connector between ECM and recirculation gas temperature sensor is in short or open.
56	EGR system	Faulty EGR system function

Trouble code	Item	Contents of diagnosis
61	Fuel tank pressure control solenoid valve (California FWD model only)	<ul style="list-style-type: none">● The fuel tank pressure control solenoid valve is not in function.● The harness connector between ECM and fuel tank pressure control solenoid valve is in short or open.
62	Fuel temperature sensor (California FWD model only)	<ul style="list-style-type: none">● The fuel temperature sensor signal is abnormal.● The harness connector between ECM and fuel temperature sensor is in short or open.
63	Fuel tank pressure sensor (California FWD model only)	<ul style="list-style-type: none">● The fuel tank pressure sensor signal is abnormal.● The harness connector between ECM and fuel tank pressure sensor is in short or open.

C: READ MEMORY MODE



D: D-CHECK MODE



E: CLEAR MEMORY MODE

