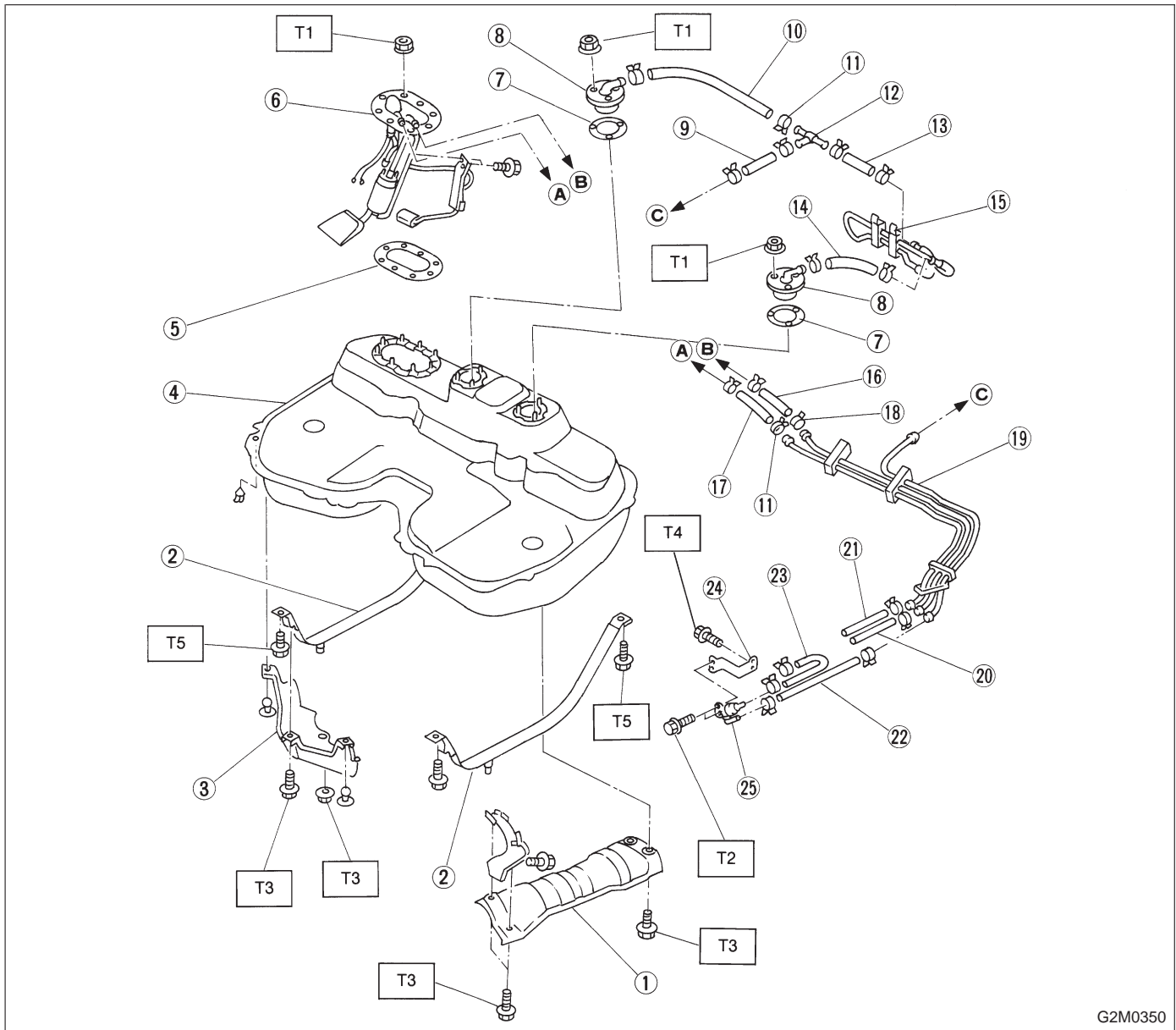


1. Fuel Tank

1. AWD MODEL



G2M0350

- ① Heat sealed cover
- ② Fuel tank band
- ③ Protector
- ④ Fuel tank
- ⑤ Fuel pump gasket
- ⑥ Fuel pump ASSY
- ⑦ Fuel cut valve gasket
- ⑧ Fuel cut valve
- ⑨ Evaporation hose C
- ⑩ Evaporation hose A
- ⑪ Clip
- ⑫ Joint pipe
- ⑬ Evaporation hose B
- ⑭ Evaporation hose D
- ⑮ Evaporation pipe ASSY
- ⑯ Fuel delivery hose A
- ⑰ Fuel return hose A
- ⑱ Clamp

- ⑲ Fuel pipe ASSY
- ⑳ Fuel delivery hose B
- ㉑ Fuel return hose B
- ㉒ Evaporation hose E
- ㉓ Evaporation hose F
- ㉔ Roll over valve bracket
- ㉕ Roll over valve

Tightening torque: N·m (kg·m, ft·lb)

T1: 4.4±1.5 (0.45±0.15, 3.3±1.1)

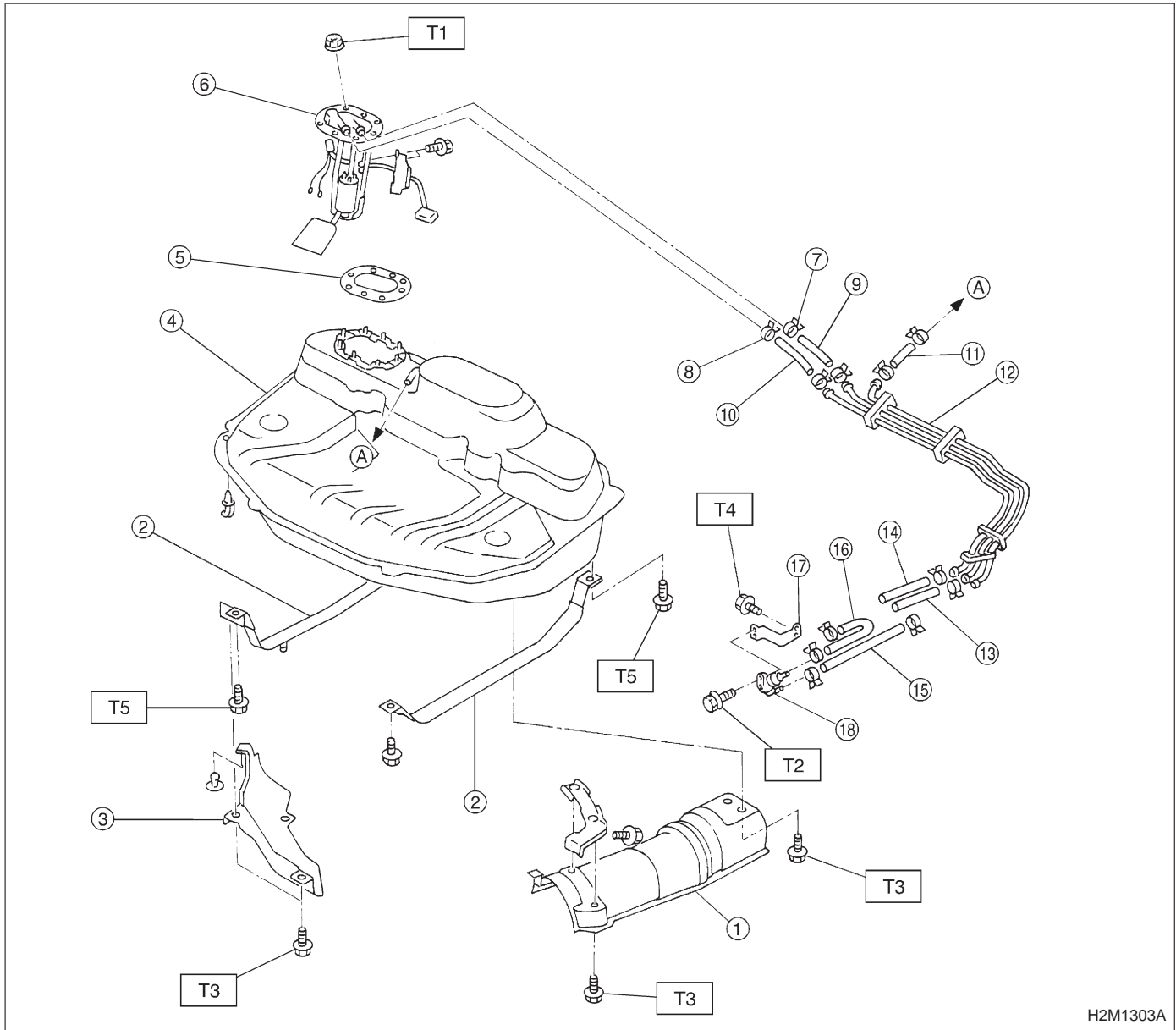
T2: 6.5±1.5 (0.65±0.15, 4.8±1.1)

T3: 7.4±2.0 (0.75±0.2, 5.4±1.4)

T4: 18±5 (1.8±0.5, 13.5±3.5)

T5: 33±10 (3.4±1.0, 25±7)

2. FWD MODEL (EXCEPT CALIFORNIA)



- ① Heat seated cover
- ② Fuel tank band
- ③ Protector
- ④ Fuel tank
- ⑤ Fuel pump gasket
- ⑥ Fuel pump ASSY
- ⑦ Clamp
- ⑧ Clip
- ⑨ Fuel delivery hose A
- ⑩ Fuel return hose A
- ⑪ Evaporation hose A
- ⑫ Fuel pipe ASSY
- ⑬ Fuel delivery hose B
- ⑭ Fuel return hose B
- ⑮ Evaporation hose B
- ⑯ Evaporation hose C
- ⑰ Roll over valve bracket
- ⑱ Roll over valve

Tightening torque: N·m (kg·m, ft·lb)

T1: 4.4±1.5 (0.45±0.15, 3.3±1.1)

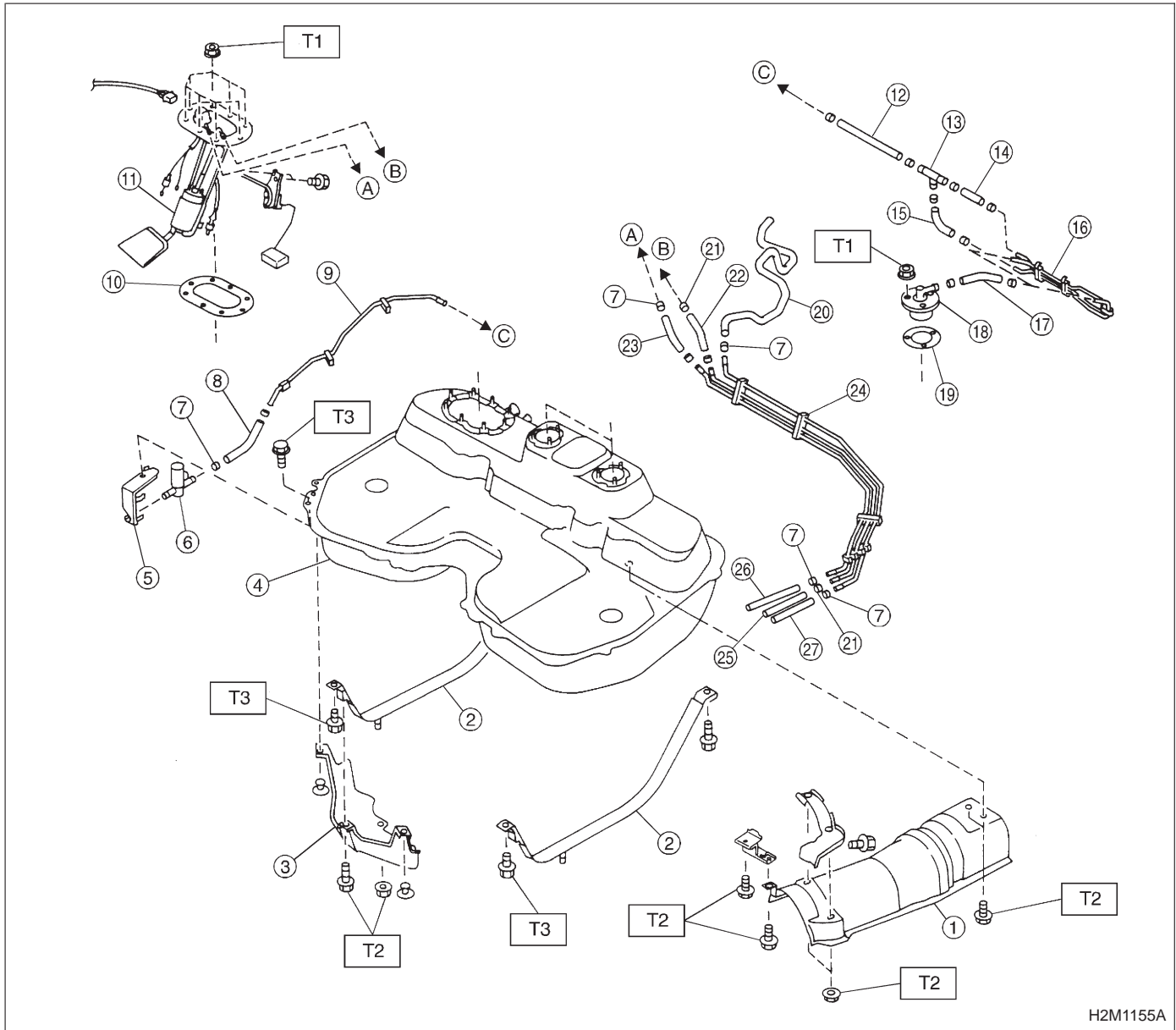
T2: 6.5±1.5 (0.65±0.15, 4.8±1.1)

T3: 7.4±2.0 (0.75±0.2, 5.4±1.4)

T4: 18±5 (1.8±0.5, 13.5±3.5)

T5: 33±10 (3.4±1.0, 25±7)

3. CALIFORNIA FWD MODEL



- ① Heat sealed cover
- ② Fuel tank band
- ③ Protector
- ④ Fuel tank
- ⑤ Fuel tank pressure control solenoid valve bracket
- ⑥ Fuel tank pressure control solenoid valve
- ⑦ Clip
- ⑧ Evaporation hose G
- ⑨ Evaporation pipe A
- ⑩ Fuel pump gasket

- ⑪ Fuel pump ASSY
- ⑫ Evaporation hose F
- ⑬ Joint pipe
- ⑭ Evaporation hose B
- ⑮ Evaporation valve hose A
- ⑯ Evaporation pipe ASSY
- ⑰ Evaporation hose D
- ⑱ Fuel cut valve
- ⑲ Fuel cut valve gasket
- ⑳ Evaporation hose C
- ㉑ Clamp
- ㉒ Fuel delivery hose A

- ㉓ Fuel return hose A
- ㉔ Fuel pipe ASSY
- ㉕ Fuel delivery hose B
- ㉖ Fuel return hose B
- ㉗ Evaporation hose E

Tightening torque: N·m (kg·m, ft·lb)
T1: 4.4±1.5 (0.45±0.15, 3.3±1.1)
T2: 7.4±2.0 (0.75±0.2, 5.4±1.4)
T3: 33±10 (3.4±1.0, 25±7)