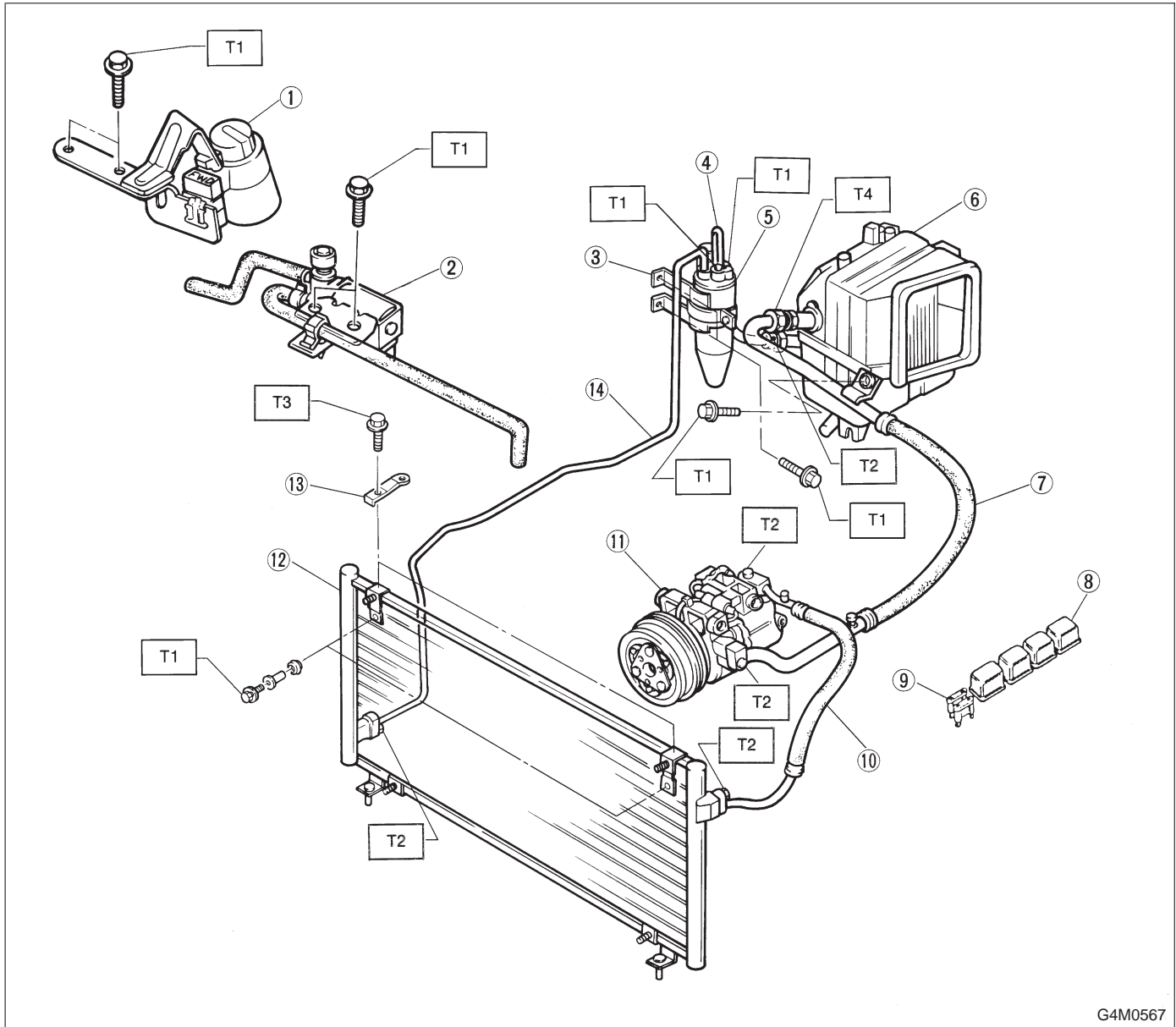


1. Air Conditioning System



G4M0567

- |                                  |                                     |
|----------------------------------|-------------------------------------|
| ① A/C cut relay                  | ⑨ Fuse                              |
| ② FICD (1800 cc model)           | ⑩ Hose (High-pressure)              |
| ③ Receiver drier bracket         | ⑪ Compressor                        |
| ④ Pipe (Receiver drier — C/unit) | ⑫ Condenser                         |
| ⑤ Receiver drier                 | ⑬ Radiator bracket                  |
| ⑥ Cooling unit                   | ⑭ Pipe (Condenser — Receiver drier) |
| ⑦ Hose (Low-pressure)            |                                     |
| ⑧ A/C relay                      |                                     |

**Tightening torque: N·m (kg·m, ft·lb)**  
**T1: 5.39 — 9.31**  
 (0.55 — 0.95, 4.0 — 6.9)  
**T2: 13 — 23 (1.3 — 2.3, 9 — 17)**  
**T3: 9.8 — 19.6**  
 (1.00 — 2.00, 7.2 — 14.4)  
**T4: 19.6 — 29.4**  
 (2.00 — 3.00, 14.4 — 21.5)