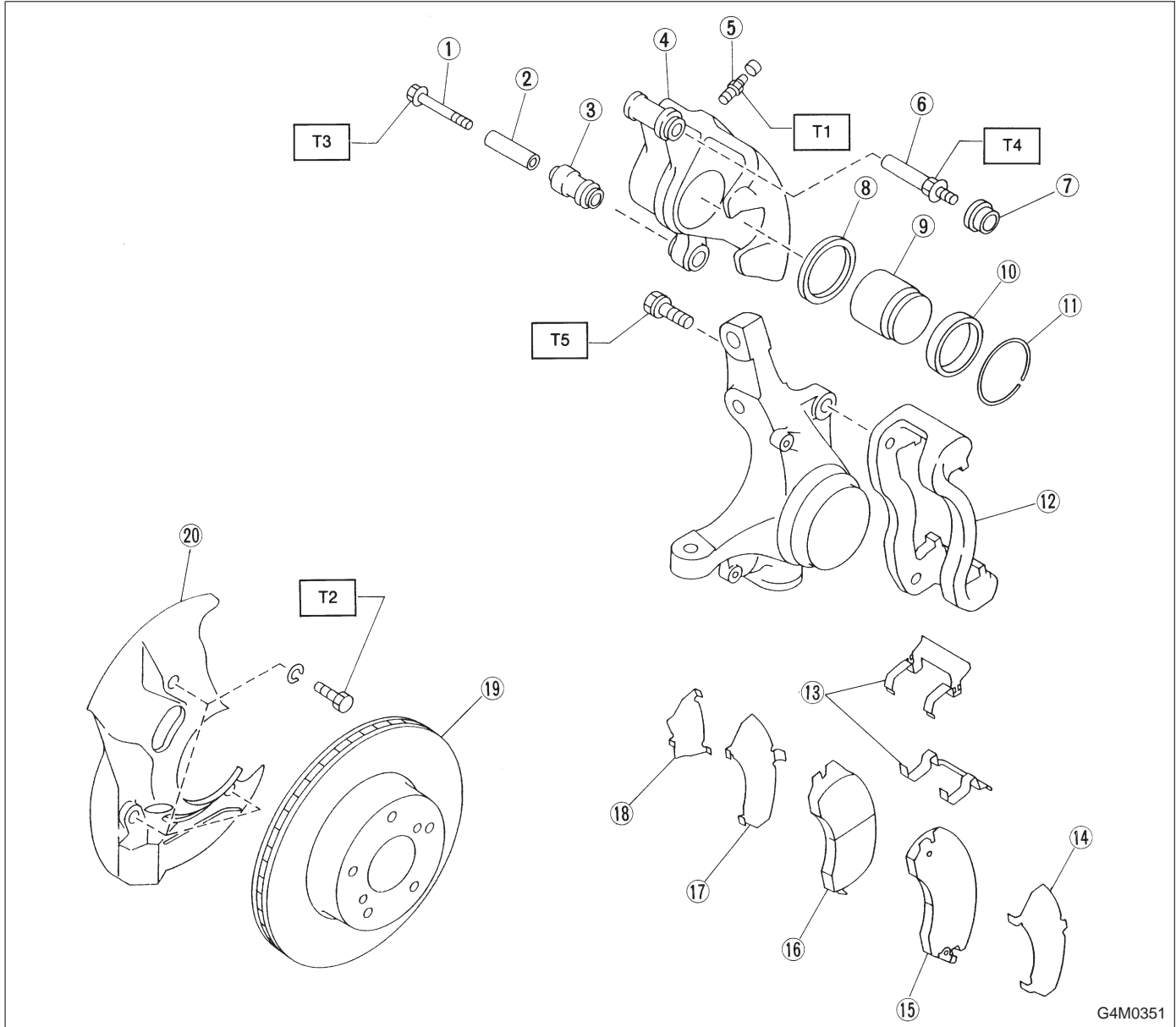


1. Front Disc Brake



- ① Lock pin
- ② Lock pin sleeve
- ③ Lock pin boot
- ④ Caliper body
- ⑤ Air bleeder screw
- ⑥ Guide pin
- ⑦ Guide pin boot
- ⑧ Piston seal
- ⑨ Piston

- ⑩ Piston boot
- ⑪ Boot ring
- ⑫ Support
- ⑬ Pad clip
- ⑭ Outer shim
- ⑮ Pad (Outside)
- ⑯ Pad (Inside)
- ⑰ Inner shim
- ⑱ Shim

- ⑲ Disc rotor
- ⑳ Disc cover

Tightening torque: N·m (kg·m, ft·lb)

- T1: 8±1 (0.8±0.1, 5.8±0.7)**
- T2: 14±4 (1.4±0.4, 10.1±2.9)**
- T3: 36±5 (3.7±0.5, 26.8±3.6)**
- T4: 49±5 (5.0±0.5, 36.2±3.6)**
- T5: 78±10 (8.0±1.0, 58±7)**