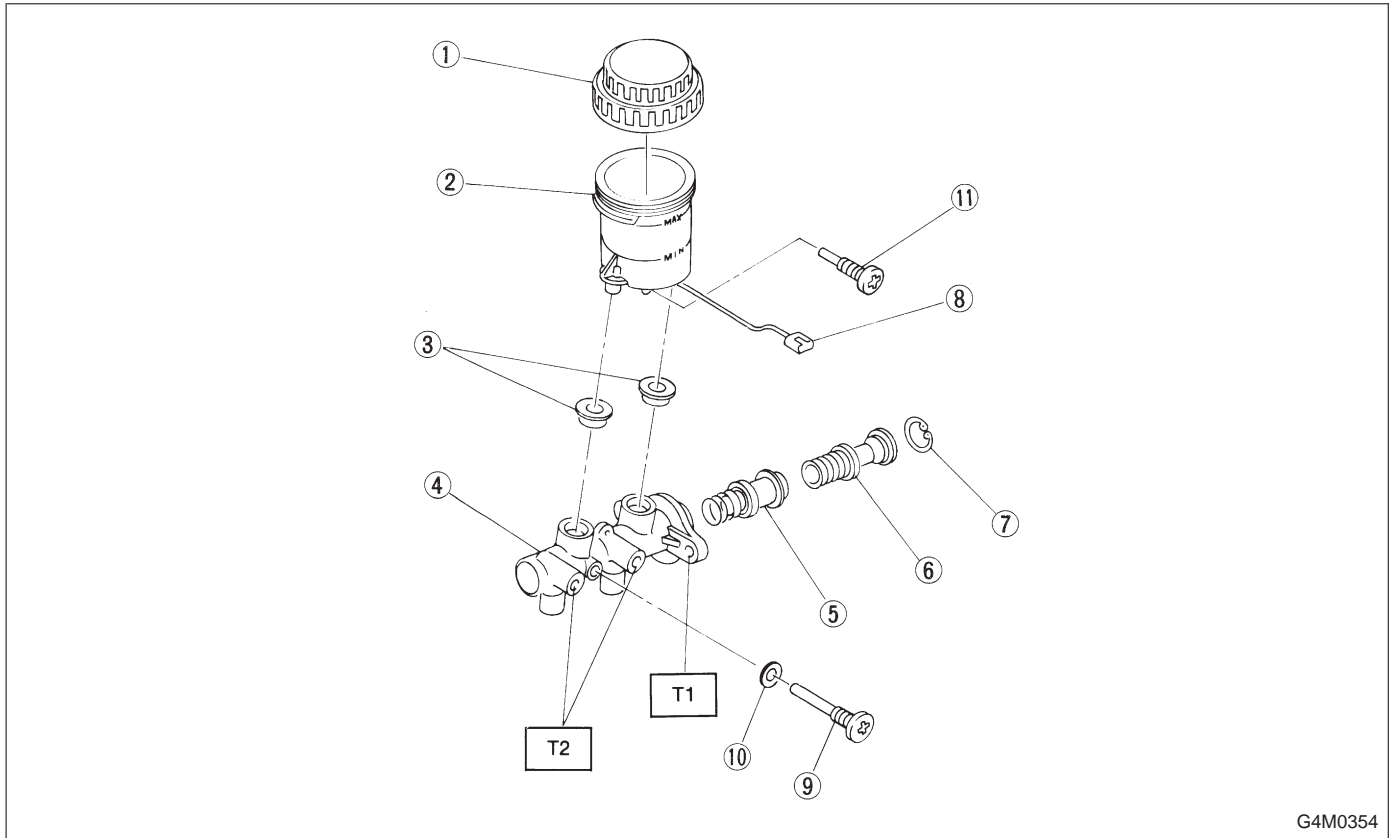


4. Master Cylinder



- ① Cap
- ② Reserve tank
- ③ Seal
- ④ Cylinder body
- ⑤ Secondary piston
- ⑥ Primary piston

- ⑦ C-ring
- ⑧ Level indicator ASSY
- ⑨ Supply valve stopper (With A.B.S.)
- ⑩ Gasket (With A.B.S.)
- ⑪ Reservoir stopper bolt

Tightening torque: N·m (kg·m, ft·lb)
T1: 14±4 (1.4±0.4, 10.1±2.9)
T2: 14.7⁺³₋₂ (1.5^{+0.3}_{-0.2}, 10.8^{+2.2}_{-1.4})