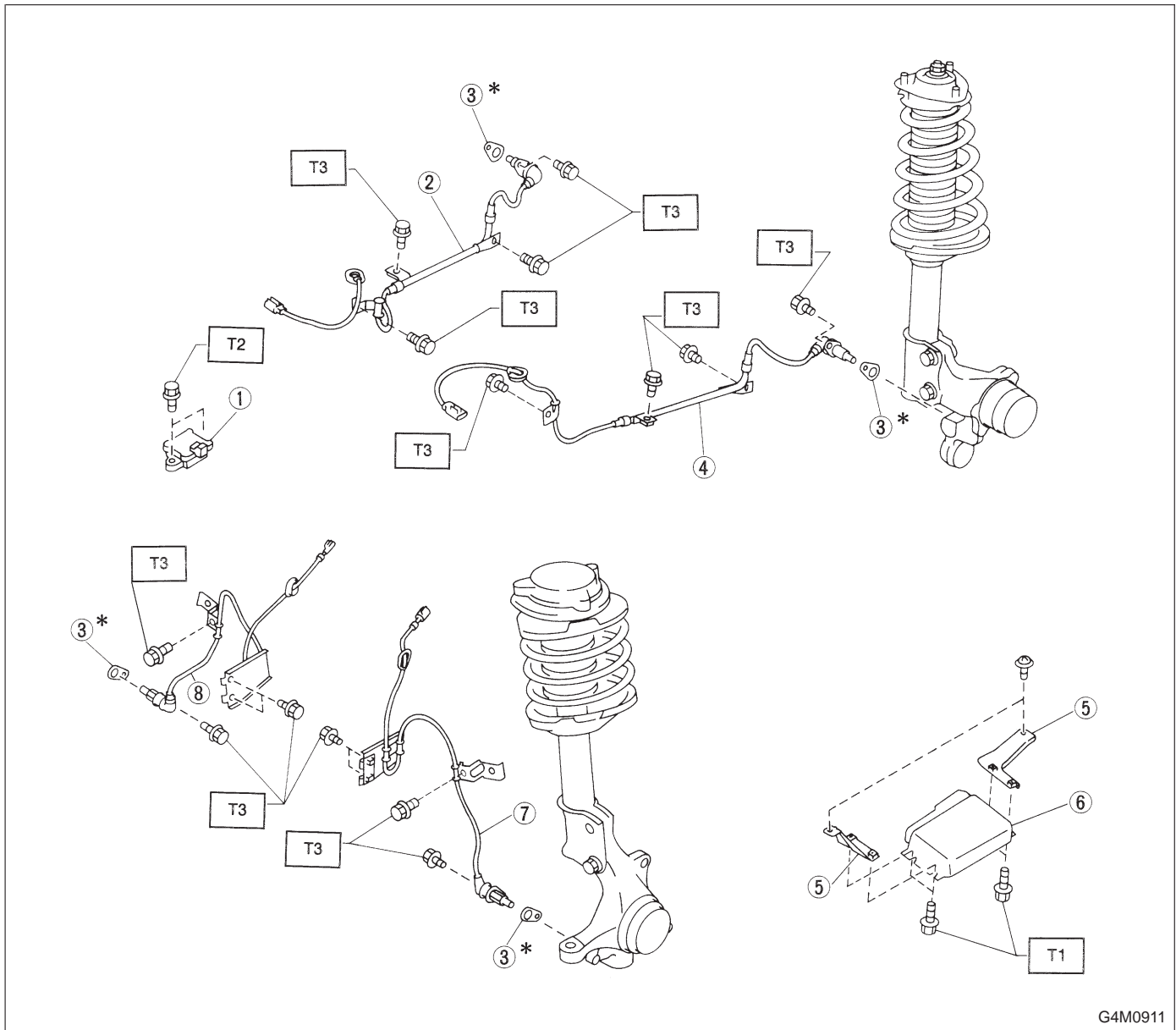


6. A.B.S. System

1. SENSOR AND CONTROL MODULE



G4M0911

- ① G sensor (AWD MT only)
- ② Rear A.B.S. sensor RH
- ③ A.B.S. spacer
- ④ Rear A.B.S. sensor LH
- ⑤ Bracket

- ⑥ A.B.S. control module
- ⑦ Front A.B.S. sensor LH
- ⑧ Front A.B.S. sensor RH

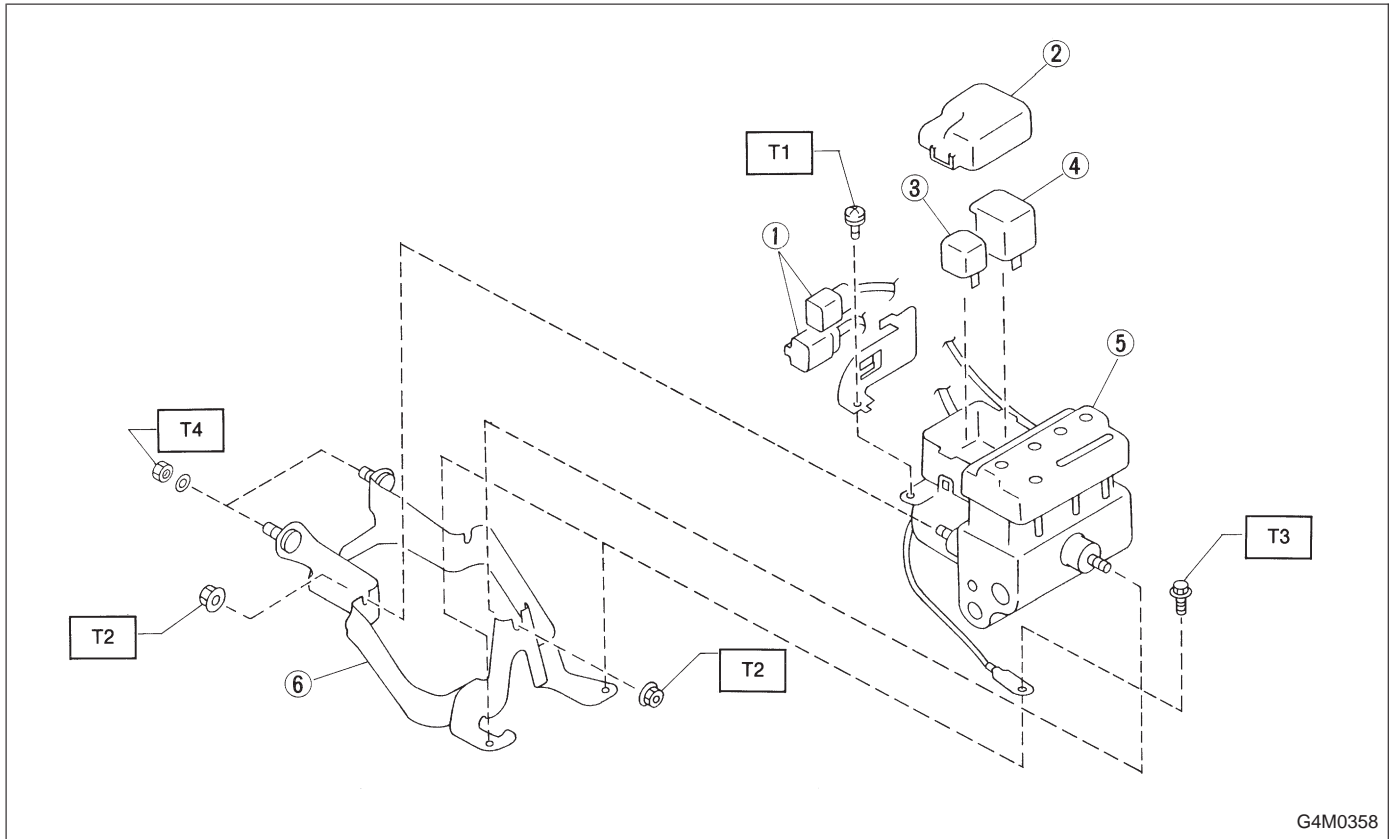
Tightening torque: N·m (kg·m, ft·lb)

T1: 5.9±1.5 (0.60±0.15, 4.3±1.1)

T2: 7.4±2.0 (0.75±0.2, 5.4±1.4)

T3: 32±10 (3.3±1.0, 24±7)

2. HYDRAULIC UNIT



G4M0358

- ① Connector
- ② Cap
- ③ Motor relay
- ④ Valve relay
- ⑤ Hydraulic control unit
- ⑥ Bracket

Tightening torque: N·m (kg·m, ft·lb)
T1: 1.2±0.2 (0.125±0.025, 0.9±0.2)
T2: 18±5 (1.8±0.5, 13.0±3.6)
T3: 32±10 (3.3±1.0, 24±7)
T4: 52±15 (5.3±1.5, 38±11)