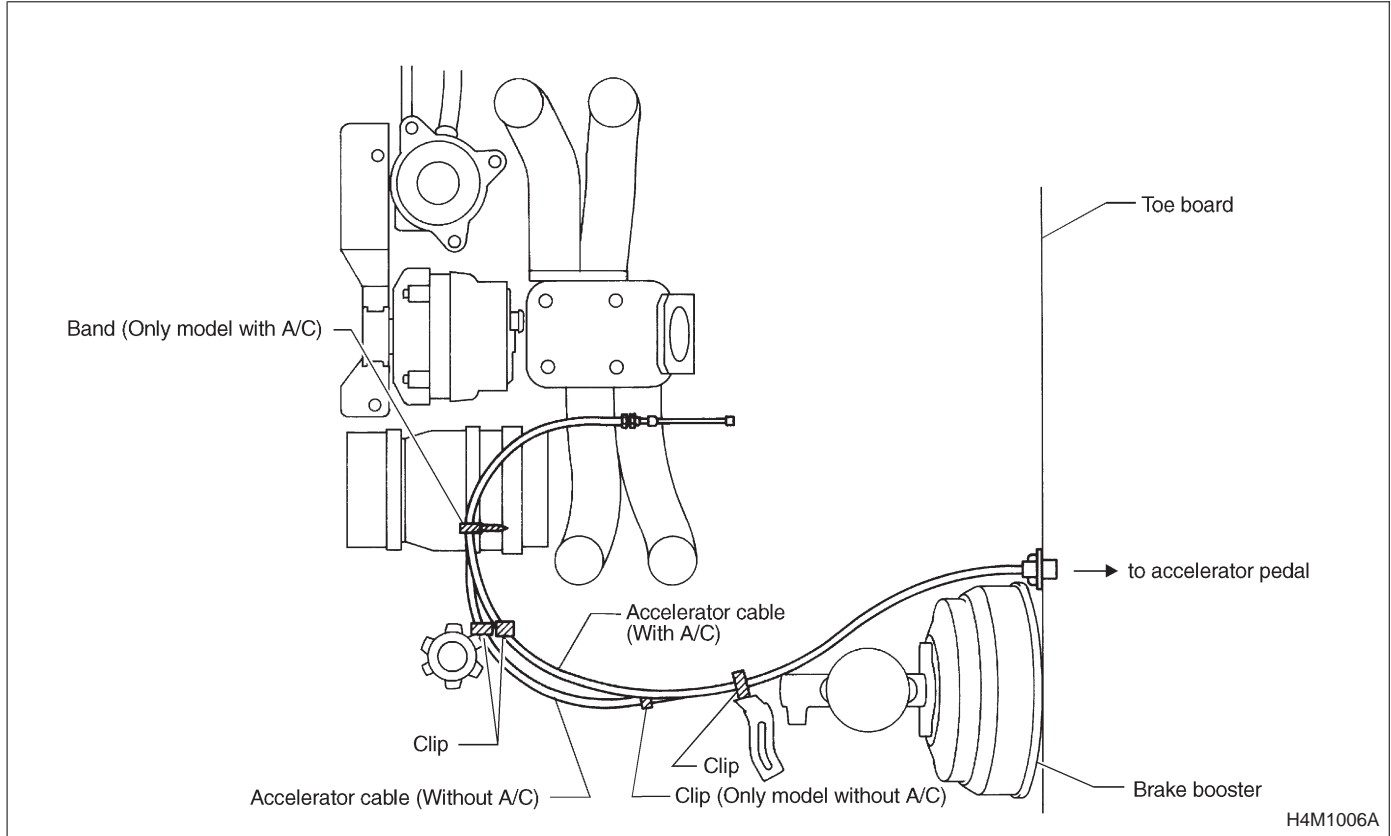
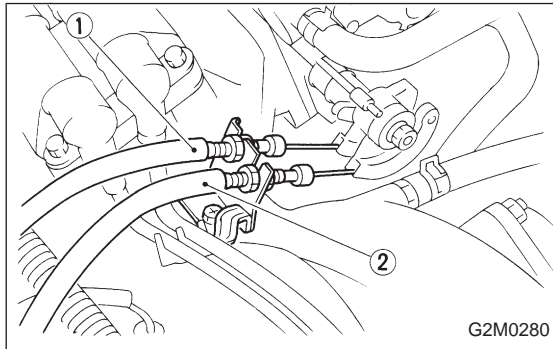


### 3. Accelerator Cable



#### A: REMOVAL

1) Disconnect accelerator cable from connector inside engine compartment first.

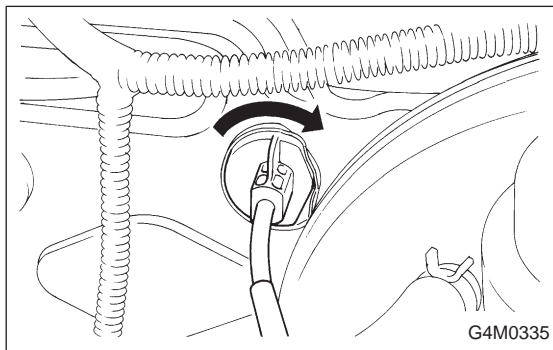


- 2) Remove lock nut from accelerator cable bracket.
- 3) Separate accelerator cable ① from bracket, then unlock inner cable.
- 4) Remove cable end from throttle cam using your fingertips.

#### CAUTION:

**Be careful not to bend inner cable.**

- 5) Disconnect cable end from accelerator cable bracket inside driver compartment.
- 6) Remove clip inside engine compartment.



- 7) Working inside engine compartment, remove cable connection by turning toe board clockwise.

**B: INSTALLATION**

- 1) Pass inner cable through toe board hole and route inside driver compartment. Install cable bushing on accelerator pedal end.
- 2) While turning accelerator cable counterclockwise, transfer it to driver compartment through toe board hole.
- 3) Connect accelerator cable to upper holder of accelerator pedal.
- 4) Install clip inside engine compartment.
- 5) To install cable to throttle cam, reverse the order of the removal procedures.

***Tightening torque:***

***14±4 N·m (1.4±0.4 kg-m, 10.1±2.9 ft-lb)***

- 6) Adjustment after cable installation <Ref. to 4-5 [W1A3].>