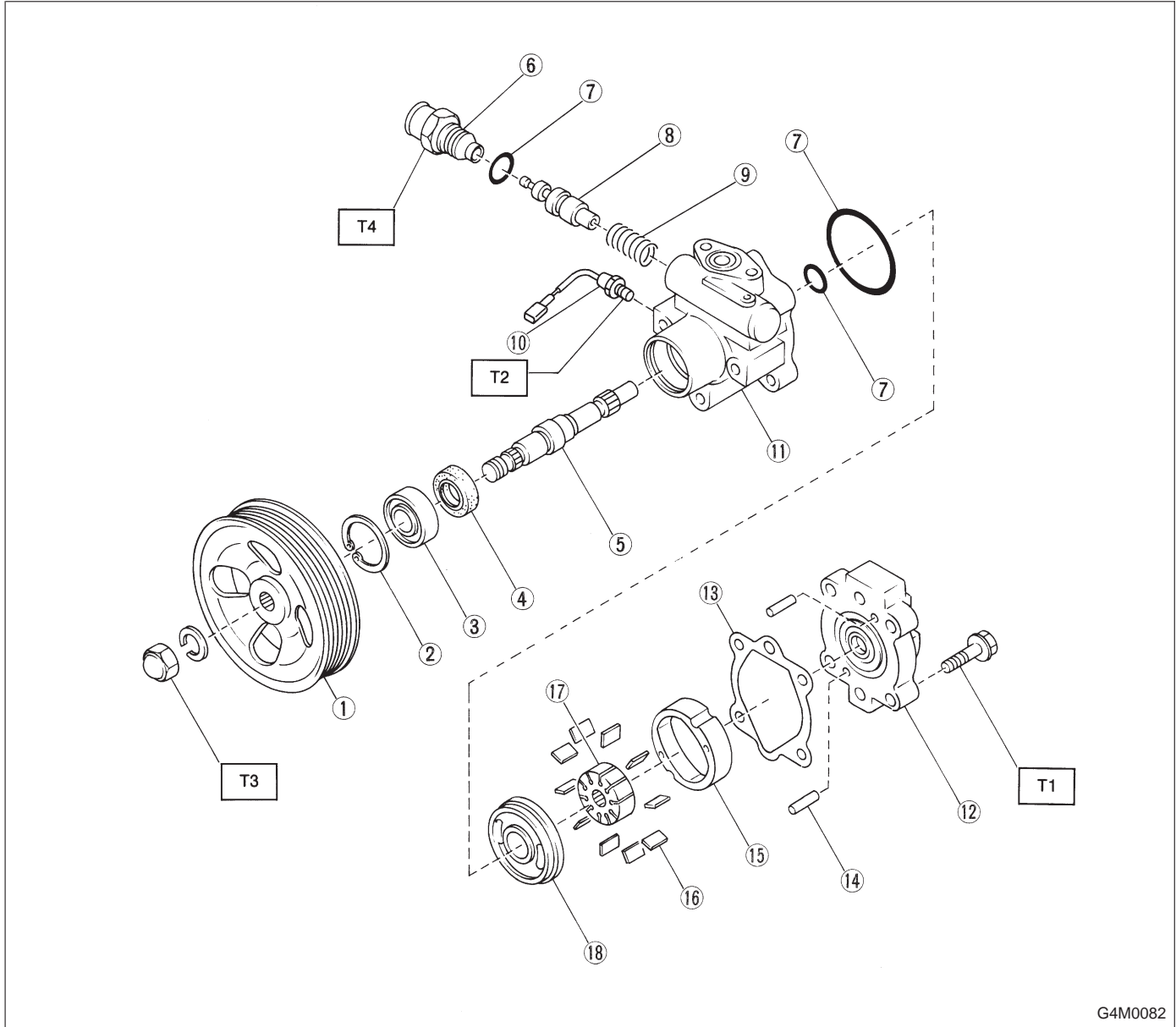


3. Power Steering Oil Pump



G4M0082

- ① Pulley
- ② Snap ring
- ③ Bearing
- ④ Oil seal
- ⑤ Shaft
- ⑥ Connector
- ⑦ O-ring
- ⑧ Spool valve

- ⑨ Spring
- ⑩ Pressure switch
- ⑪ Front casing
- ⑫ Rear cover
- ⑬ Gasket
- ⑭ Knock pin
- ⑮ Cam ring
- ⑯ Vane

- ⑰ Rotor
- ⑱ Side plate

**Tightening torque: N·m (kg·m, ft·lb)**

**T1: 16±2 (1.6±0.2, 11.6±1.4)**

**T2: 20±3 (2.0±0.3, 14.5±2.2)**

**T3: 61±6.9 (6.2±0.7, 44.8±5.1)**

**T4: 74±5 (7.5±0.5, 54.2±3.6)**