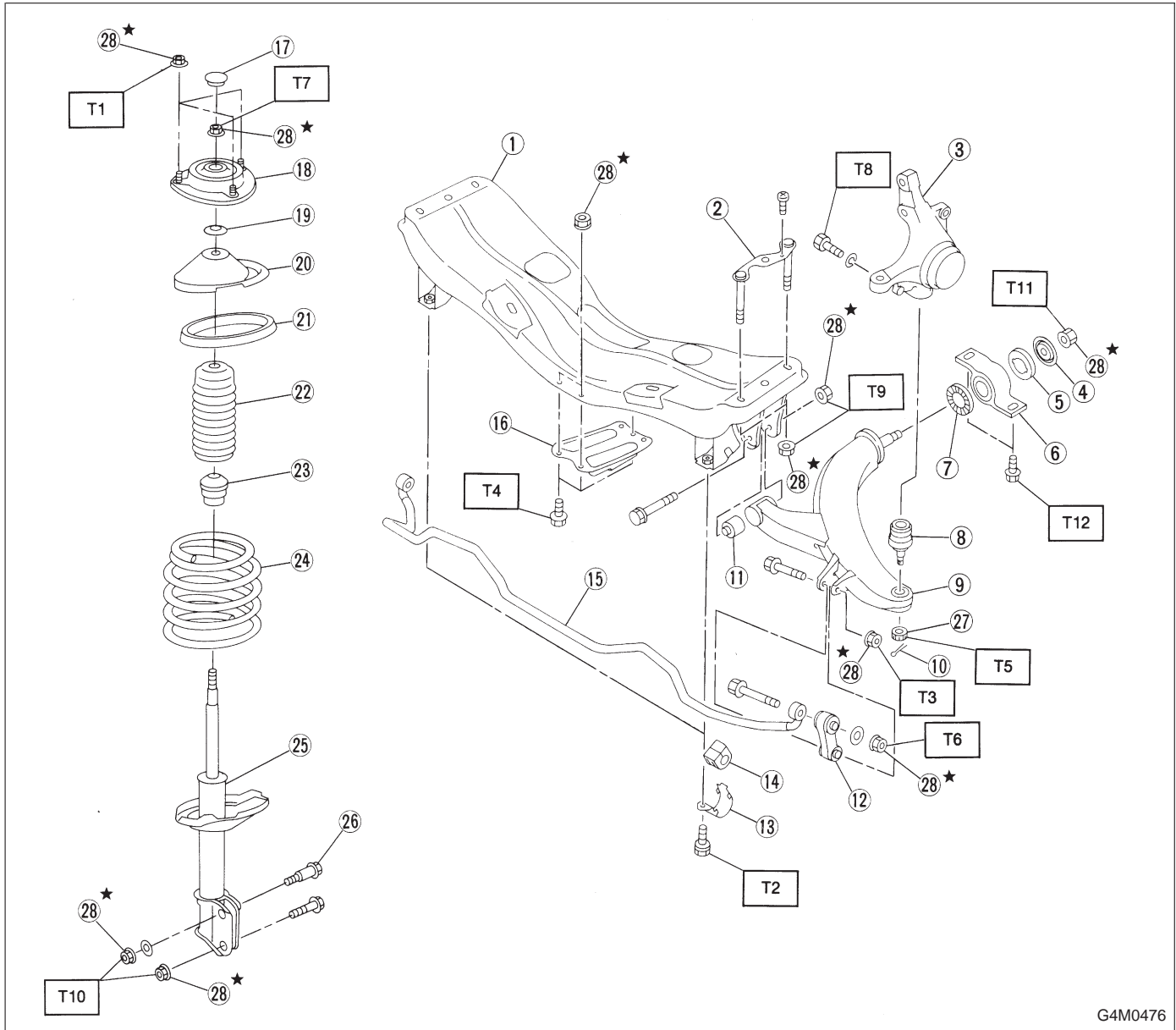


1. Suspension

1. FRONT SUSPENSION

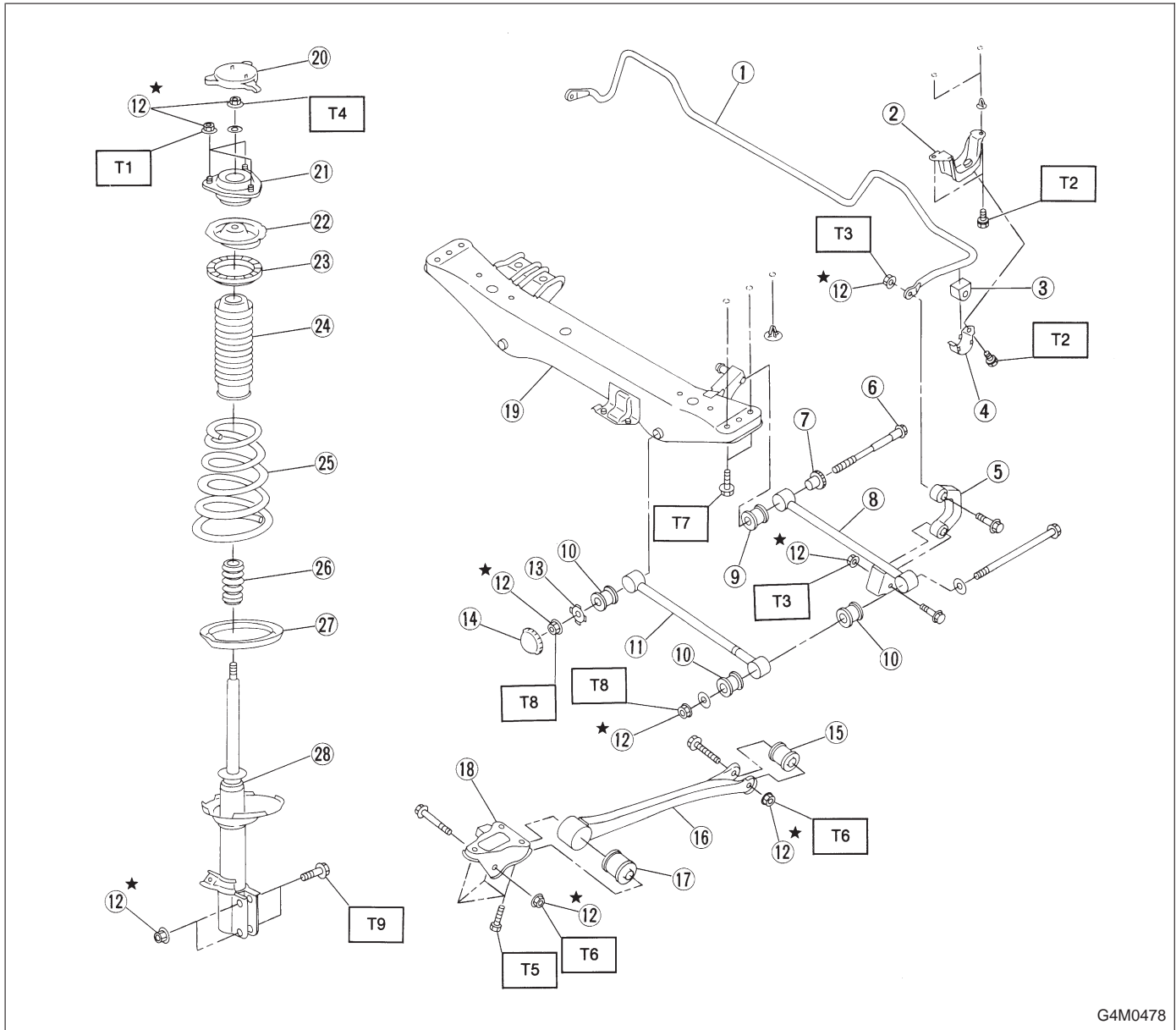


- ① Crossmember
- ② Bolt ASSY
- ③ Housing
- ④ Washer
- ⑤ Stop rubber (Rear)
- ⑥ Rear bushing
- ⑦ Stop rubber (Front)
- ⑧ Ball joint
- ⑨ Transverse link
- ⑩ Cotter pin
- ⑪ Front bushing
- ⑫ Stabilizer link
- ⑬ Clamp
- ⑭ Bushing
- ⑮ Stabilizer
- ⑯ Jack-up plate
- ⑰ Dust seal
- ⑱ Strut mount
- ⑲ Spacer
- ⑳ Upper spring seat
- ㉑ Rubber seat
- ㉒ Dust cover
- ㉓ Helper
- ㉔ Coil spring
- ㉕ Damper strut
- ㉖ Adjusting bolt
- ㉗ Castle nut
- ㉘ Self-locking nut

Tightening torque: N·m (kg·m, ft·lb)

- T1: 20±6 (2.0±0.6, 14.5±4.3)
- T2: 25±4 (2.5±0.4, 18.1±2.9)
- T3: 29±5 (3.0±0.5, 21.7±3.6)
- T4: 32±10 (3.3±1.0, 24±7)
- T5: 39 (4, 29)
- T6: 44±6 (4.5±0.6, 32.5±4.3)
- T7: 49⁺¹⁰₋₀ (5.0⁺¹⁰₋₀, 36⁺⁷₋₀)
- T8: 49±10 (5.0±1.0, 36±7)
- T9: 98±15 (10.0±1.5, 72±11)
- T10: 152±20 (15.5±2.0, 112±14)
- T11: 196±25 (20.0±2.5, 145±18)
- T12: 245±49 (25.0±5.0, 181±36)

3. REAR SUSPENSION (FWD MODEL)



G4M0478

- | | |
|----------------------|-------------------------------|
| ① Stabilizer | ⑮ Trailing link rear bushing |
| ② Stabilizer bracket | ⑯ Trailing link |
| ③ Stabilizer bushing | ⑰ Trailing link front bushing |
| ④ Clamp | ⑱ Trailing link bracket |
| ⑤ Stabilizer link | ⑲ Crossmember |
| ⑥ Adjusting bolt | ⑳ Cap |
| ⑦ Adjusting wheel | ㉑ Strut mount |
| ⑧ Rear lateral link | ㉒ Spring seat |
| ⑨ Bushing (D) | ㉓ Rubber seat upper |
| ⑩ Bushing (A) | ㉔ Dust cover |
| ⑪ Front lateral link | ㉕ Coil spring |
| ⑫ Self-locking nut | ㉖ Helper |
| ⑬ Washer | ㉗ Rubber seat lower |
| ⑭ Cap | ㉘ Damper strut |

Tightening torque: N·m (kg·m, ft·lb)

- T1: 20±6 (2.0±0.6, 14.5±4.3)
 T2: 25±7 (2.5±0.7, 18.1±5.1)
 T3: 44±6 (4.5±0.6, 32.5±4.3)
 T4: 59±10 (6.0±1.0, 43±7)
 T5: 98±20 (10.0±2.0, 72±14)
 T6: 113±15 (11.5±1.5, 83±11)
 T7: 127±20 (13.0±2.0, 94±14)
 T8: 137±20 (14.0±2.0, 101±14)
 T9: 196⁺³⁹₋₁₀ (20.0^{+4.0}_{-1.0}, 145⁺²⁹₋₇)