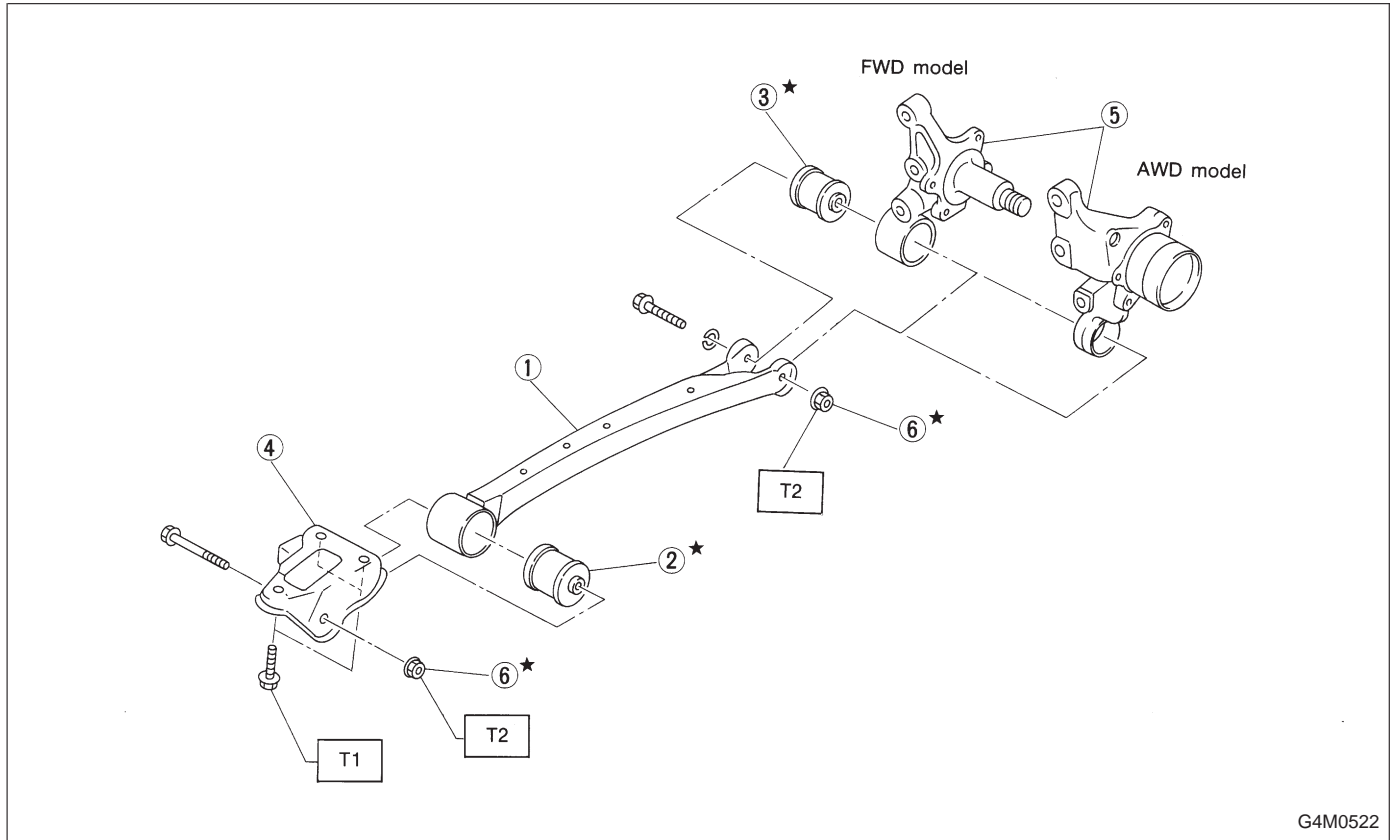


## 7. Rear Trailing Link

## A: REMOVAL



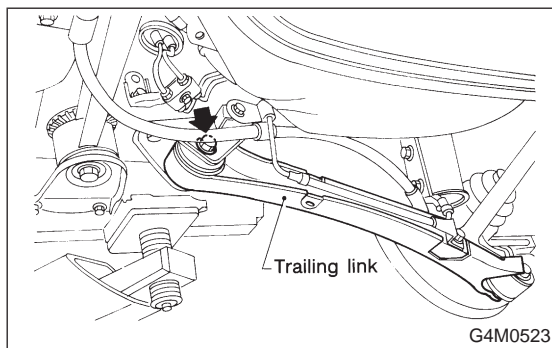
- ① Trailing link
- ② Front bushing
- ③ Rear bushing
- ④ Bracket
- ⑤ Housing
- ⑥ Self-locking nut

**Tightening torque: N·m (kg·m, ft·lb)**

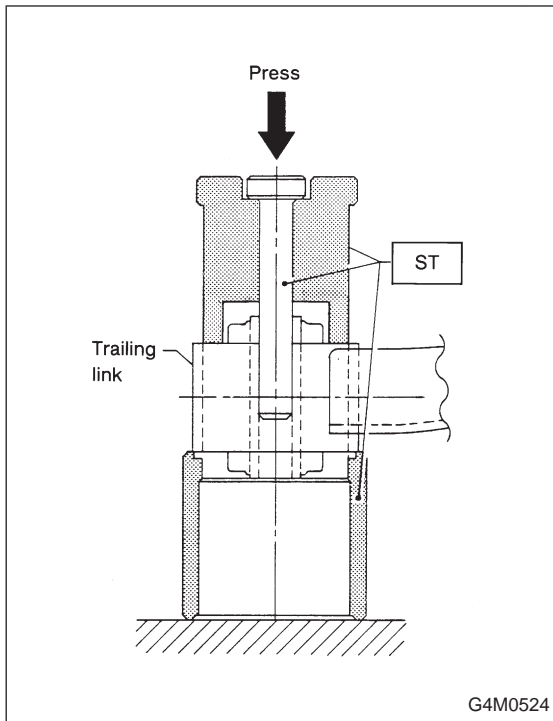
**T1: 98±20 (10.0±2.0, 72±14)**

**T2: 113±15 (11.5±1.5, 83±11)**

- 1) Loosen rear wheel nuts.
- 2) Jack-up vehicle, support it with safety stands (rigid racks) and remove rear wheels.
- 3) Remove both rear parking brake clamp and A.B.S. sensor harness. (only vehicle equipped with A.B.S.)

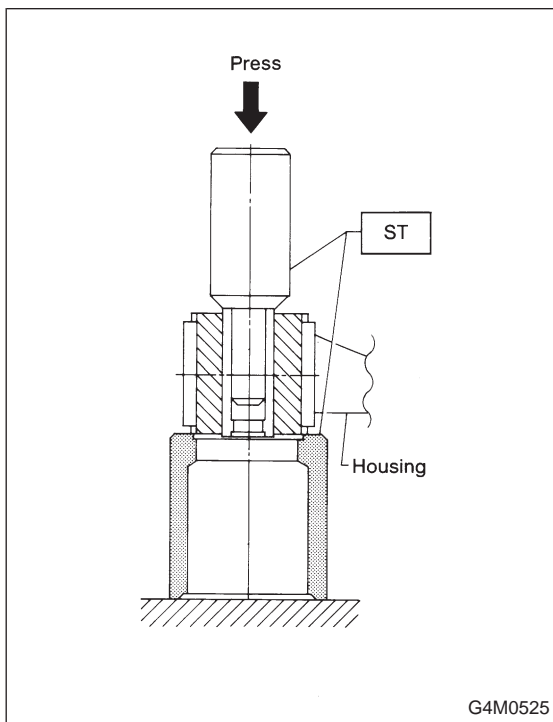


- 4) Remove bolt which secure trailing link to trailing link bracket.
- 5) Remove bolt which secure trailing link to rear housing.

**B: DISASSEMBLY****1. FRONT BUSHING**

Using ST, press front bushing out of place.

ST 927720000 INSTALLER & REMOVER SET

**2. REAR BUSHING**

1) Remove housing. Refer to "4-2. WHEELS AND AXLES" for removal procedures.

2) Using ST, press rear bushing out of place.

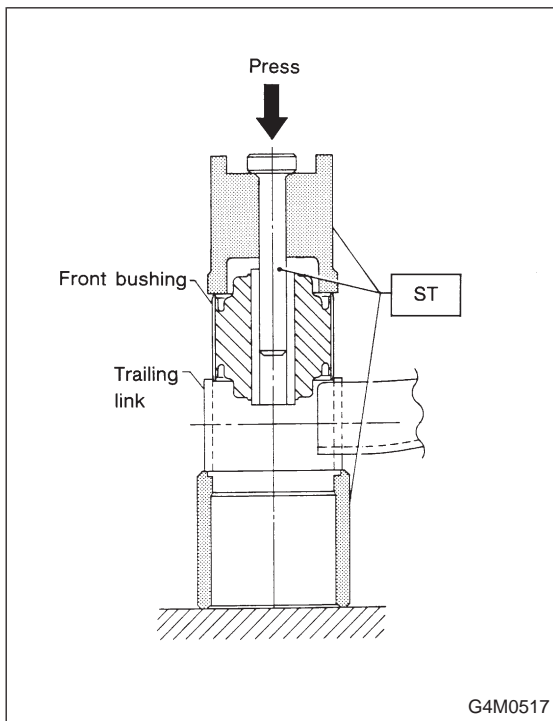
ST 927730000 INSTALLER & REMOVER SET

**C: INSPECTION**

Check trailing links for bends, corrosion or damage.

**D: ASSEMBLY**

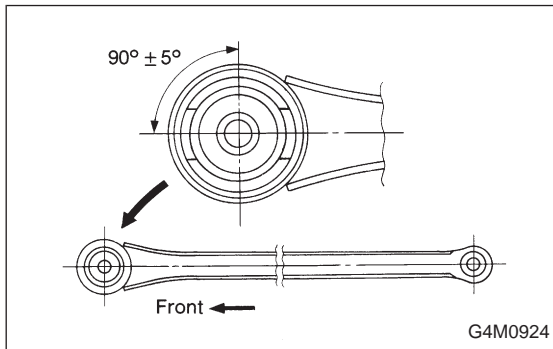
To assemble, reverse above disassembly procedures.



**1. FRONT BUSHING**

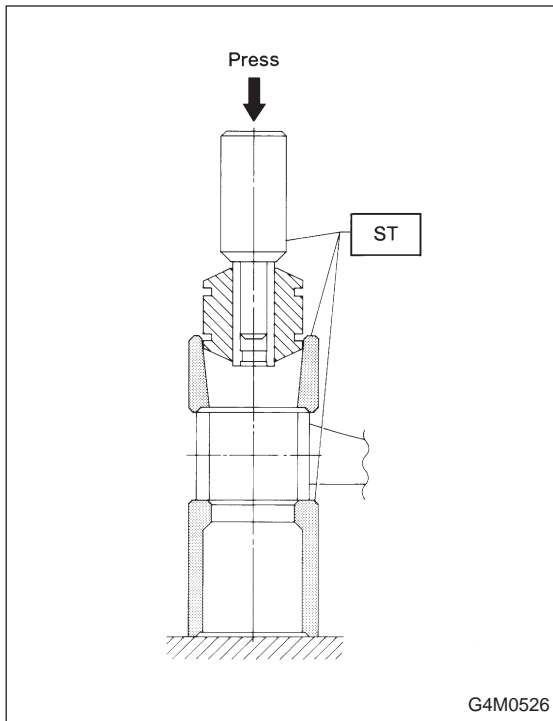
Using ST, press bushing into trailing link.

ST 927720000 INSTALLER & REMOVER SET



**CAUTION:**

Install front bushing in the proper direction, as shown in figure.

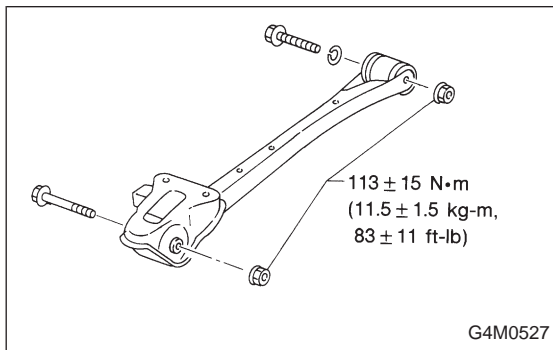


G4M0526

**2. REAR BUSHING**

Using ST, press bushing into trailing link.

ST 927730000 INSTALLER & REMOVER SET



G4M0527

**E: INSTALLATION**

Installation is in the reverse order of removal.

**CAUTION:**

**Always tighten rubber bushing location when wheels are in full contact with the ground and vehicle is curb weight.**

**NOTE:**

Check wheel alignment and adjust if necessary.