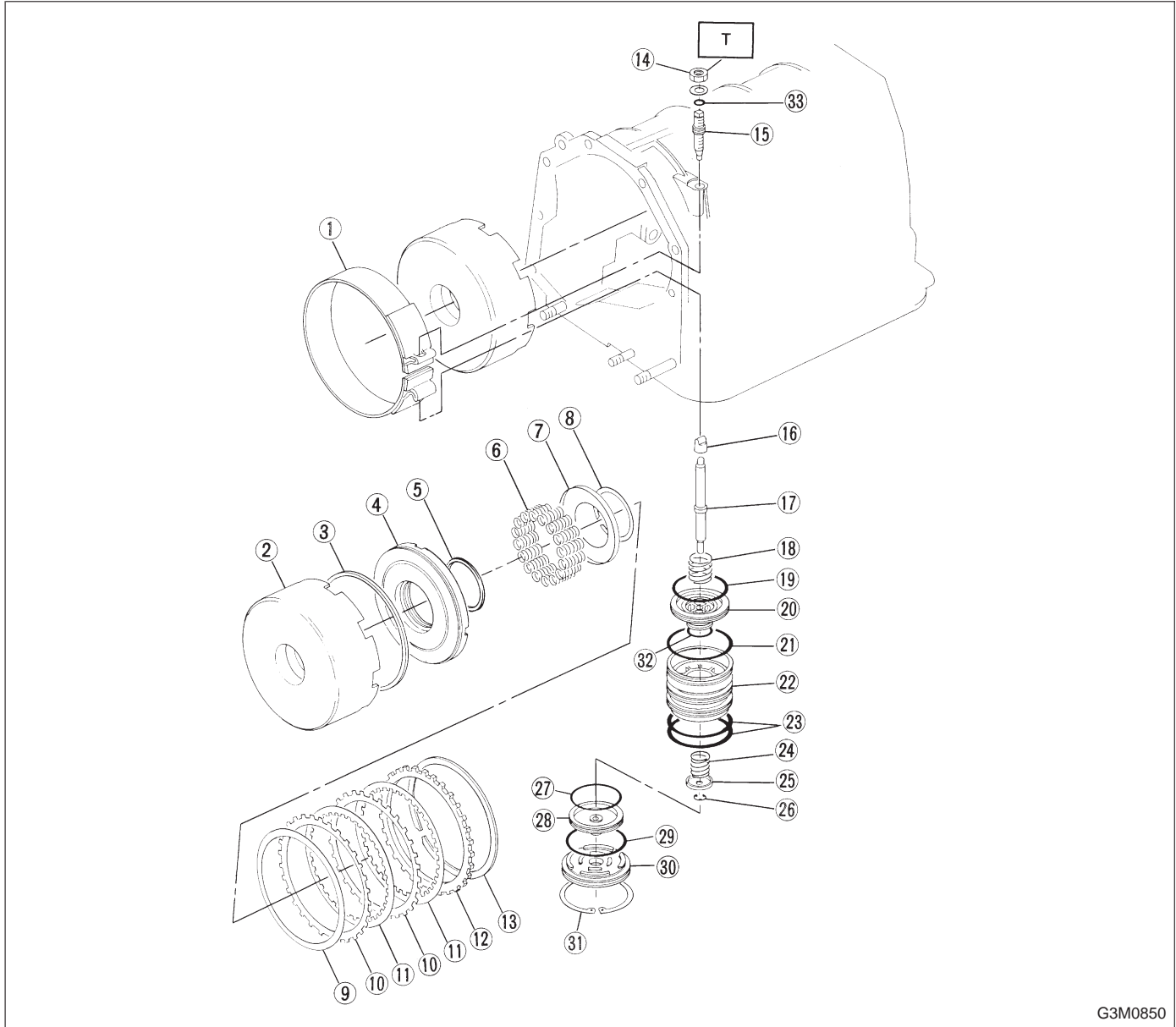


6. Reverse Clutch and Band Brake



G3M0850

- ① Brake band
- ② Reverse clutch drum
- ③ Lip seal
- ④ Piston
- ⑤ Lathe cut seal ring
- ⑥ Spring
- ⑦ Spring retainer
- ⑧ Snap ring
- ⑨ Dish plate
- ⑩ Driven plate
- ⑪ Drive plate
- ⑫ Retaining plate
- ⑬ Snap ring

- ⑭ Lock nut
- ⑮ Brake band adjusting screw
- ⑯ Strut
- ⑰ Band servo piston stem
- ⑱ Spring
- ⑲ Lathe cut seal ring
- ⑳ Band servo piston (1-2)
- ㉑ O-ring
- ㉒ Retainer
- ㉓ O-ring
- ㉔ Spring
- ㉕ Retainer
- ㉖ Circlip

- ㉗ Lathe cut seal ring
- ㉘ Band servo piston (3-4)
- ㉙ O-ring
- ㉚ O.D. servo retainer
- ㉛ Snap ring
- ㉜ Lathe cut seal ring
- ㉝ O-ring

Tightening torque: N·m (kg·m, ft·lb)
T: 26±2 (2.7±0.2, 19.5±1.4)