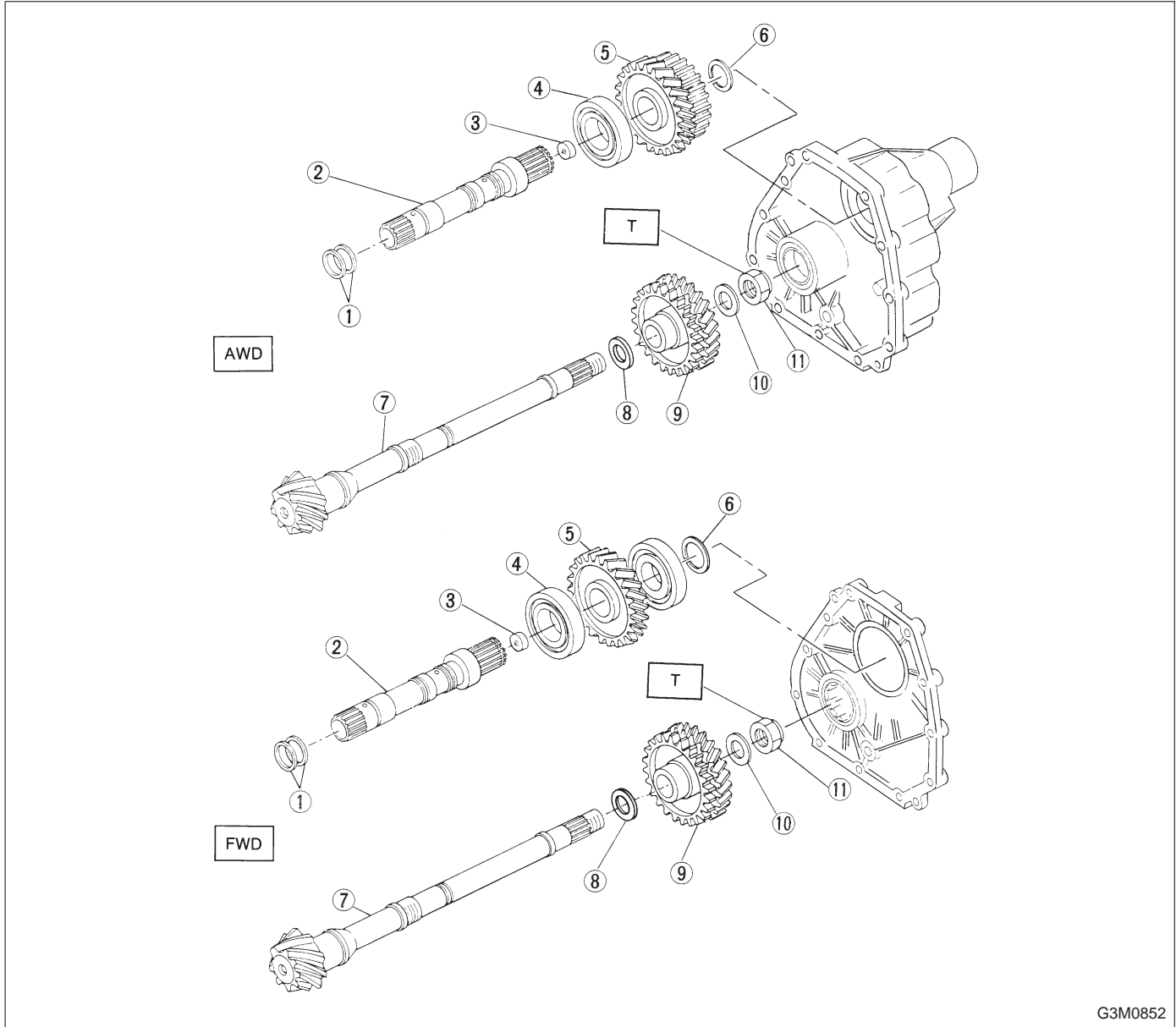


9. Reduction Gear



G3M0852

- ① Seal ring
- ② Reduction drive shaft
- ③ Plug
- ④ Ball bearing
- ⑤ Reduction drive gear
- ⑥ Snap ring
- ⑦ Drive pinion shaft
- ⑧ Washer

- ⑨ Reduction driven gear
- ⑩ Washer
- ⑪ Lock nut

Tightening torque: N·m (kg·m, ft·lb)
T: 98±5 (10.0±0.5, 72.3±3.6)