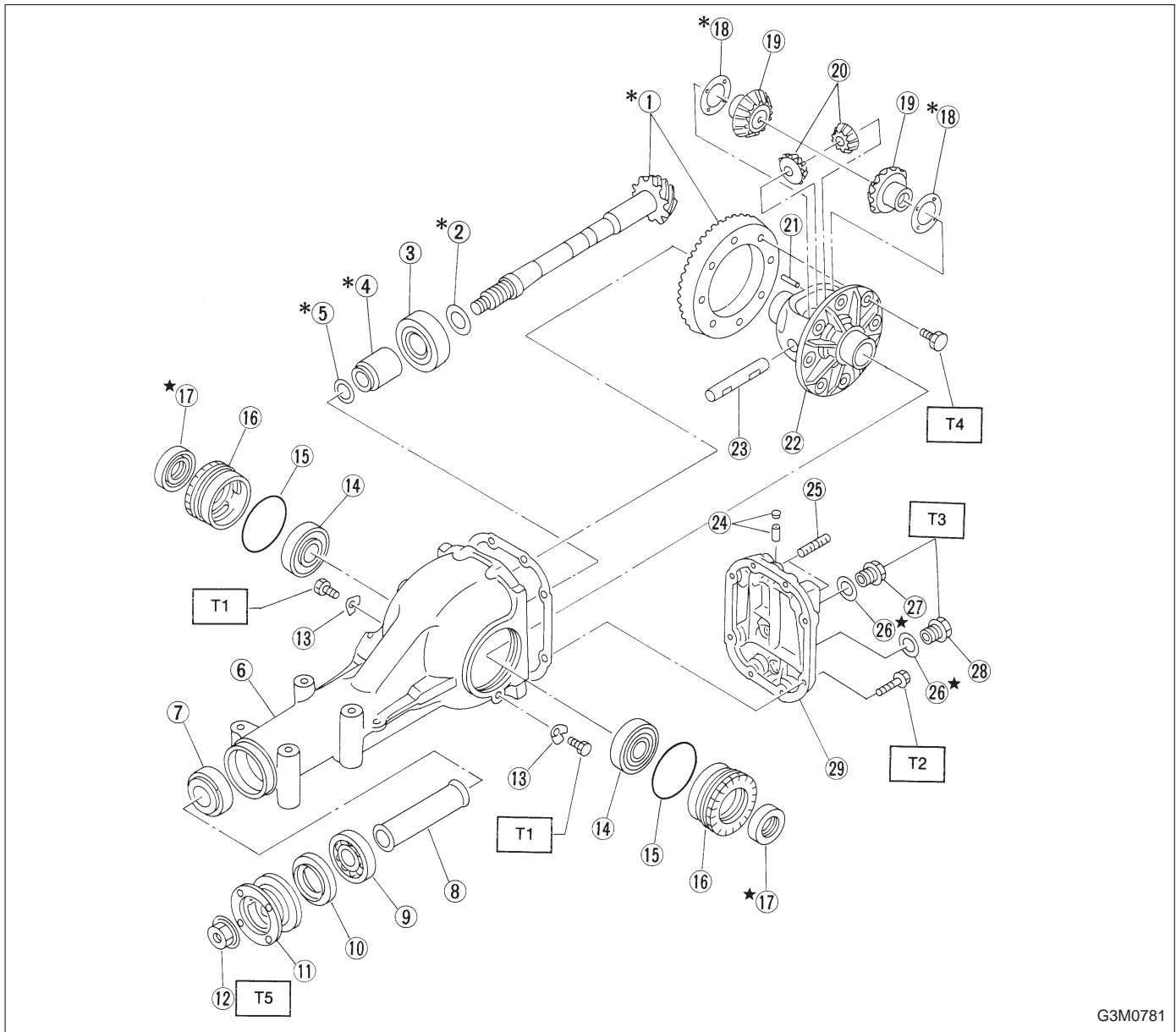


3. Rear Differential Assembly

1. 1800 cc MODEL



G3M0781

- ① Pinion crown gear set
- ② Pinion height adjusting shim
- ③ Rear bearing
- ④ Bearing preload adjusting spacer
- ⑤ Bearing preload adjusting washer
- ⑥ Differential carrier
- ⑦ Front bearing
- ⑧ Collar
- ⑨ Pilot bearing
- ⑩ Front oil seal
- ⑪ Companion flange
- ⑫ Self-locking nut
- ⑬ Lock plate
- ⑭ Side bearing
- ⑮ O-ring
- ⑯ Axle shaft holder
- ⑰ Side oil seal
- ⑱ Side gear thrust washer

- ⑲ Side gear
- ⑳ Pinion mate gear
- ㉑ Pinion shaft lock pin
- ㉒ Differential case
- ㉓ Pinion mate shaft
- ㉔ Air breather cap
- ㉕ Stud bolt
- ㉖ Gasket
- ㉗ Oil filler plug
- ㉘ Oil drain plug
- ㉙ Rear cover

Tightening torque: N·m (kg·m, ft·lb)

T1: 25±3 (2.5±0.3, 18.1±2.2)

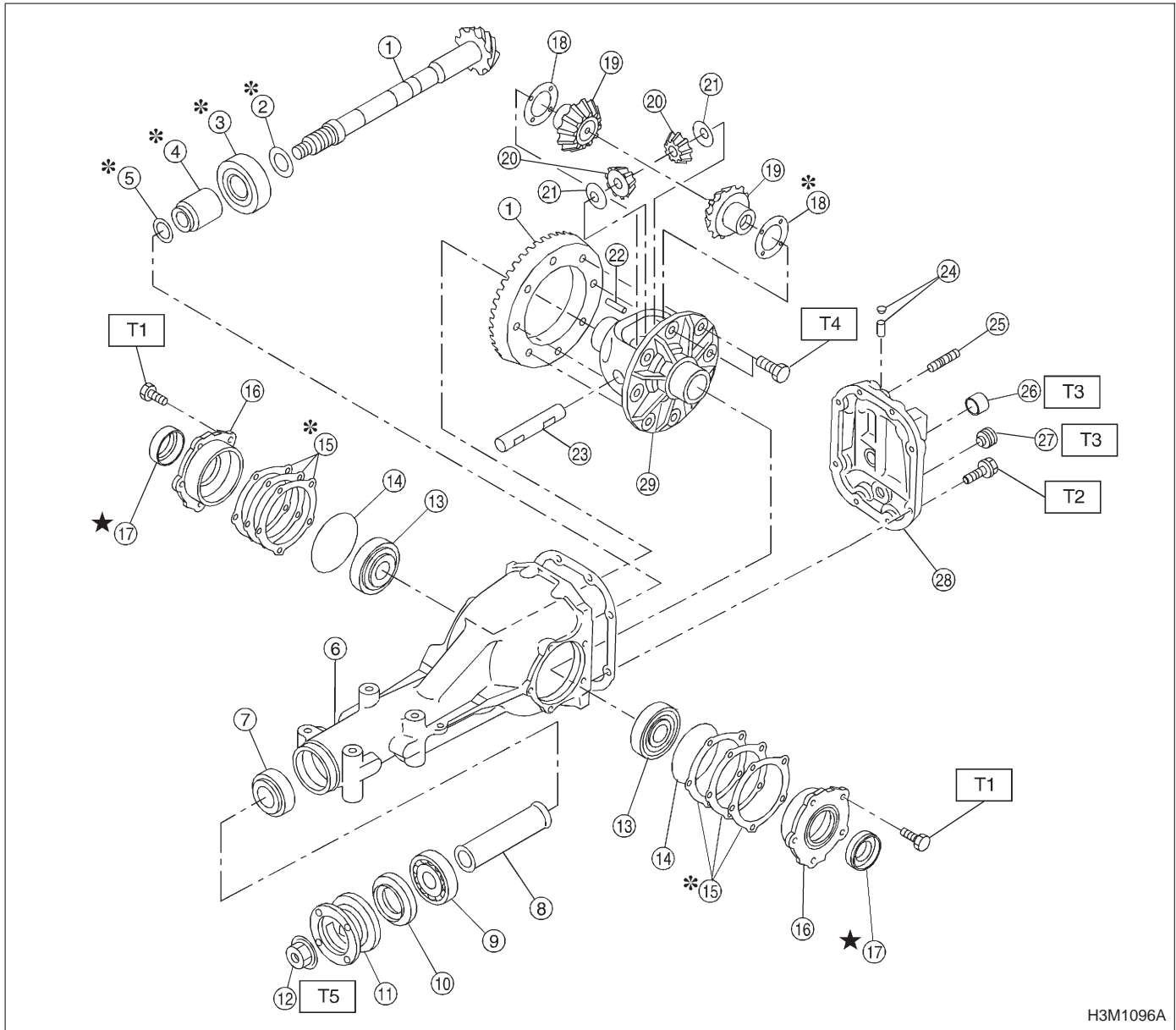
T2: 25±2 (2.5±0.2, 18.1±1.4)

T3: 34±4 (3.5±0.4, 25.3±2.9)

T4: 62±5 (6.3±0.5, 45.6±3.6)

T5: 188±26 (19.2±2.7, 139±20)

2. 2200 cc MODEL



H3M1096A

- | | |
|------------------------------------|------------------------------|
| ① Pinion crown gear set | ⑮ Side bearing retainer shim |
| ② Pinion height adjusting washer | ⑯ Side bearing retainer |
| ③ Rear bearing | ⑰ Side oil seal |
| ④ Bearing preload adjusting spacer | ⑱ Side gear thrust washer |
| ⑤ Bearing preload adjusting washer | ⑲ Side gear |
| ⑥ Differential carrier | ⑳ Pinion mate gear |
| ⑦ Front bearing | ㉑ Pinion mate gear washer |
| ⑧ Spacer | ㉒ Pinion shaft lock pin |
| ⑨ Pilot bearing | ㉓ Pinion mate shaft |
| ⑩ Front oil seal | ㉔ Air breather cap |
| ⑪ Companion flange | ㉕ Stud bolt |
| ⑫ Self-locking nut | ㉖ Oil filler plug |
| ⑬ Side bearing | ㉗ Oil drain plug |
| ⑭ O-ring | ㉘ Rear cover |

- ㉚ Differential case

Tightening torque: N·m (kg·m, ft·lb)

T1: 10.3±1.5

(1.05±0.15, 7.6±1.1)

T2: 29.4±4.9

(3.00±0.50, 21.7±3.6)

T3: 44.1±3.9

(4.50±0.40, 32.5±2.9)

T4: 103.0±9.8

(10.50±1.00, 75.9±7.2)

T5: 181.4±14.7

(18.50±1.50, 133.8±10.8)