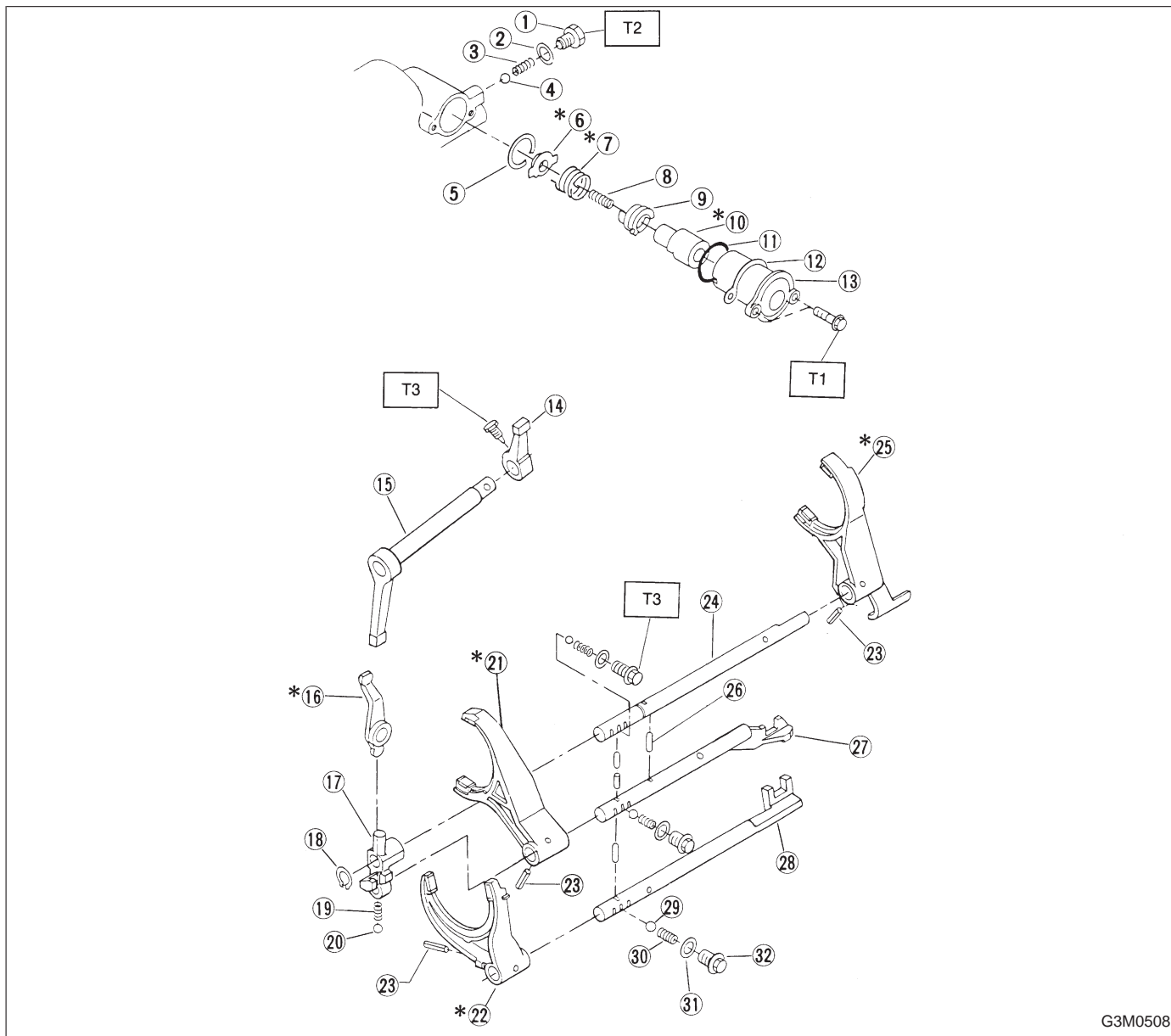


4. Shifter Fork and Shifter Rod

1. AWD MODEL



G3M0508

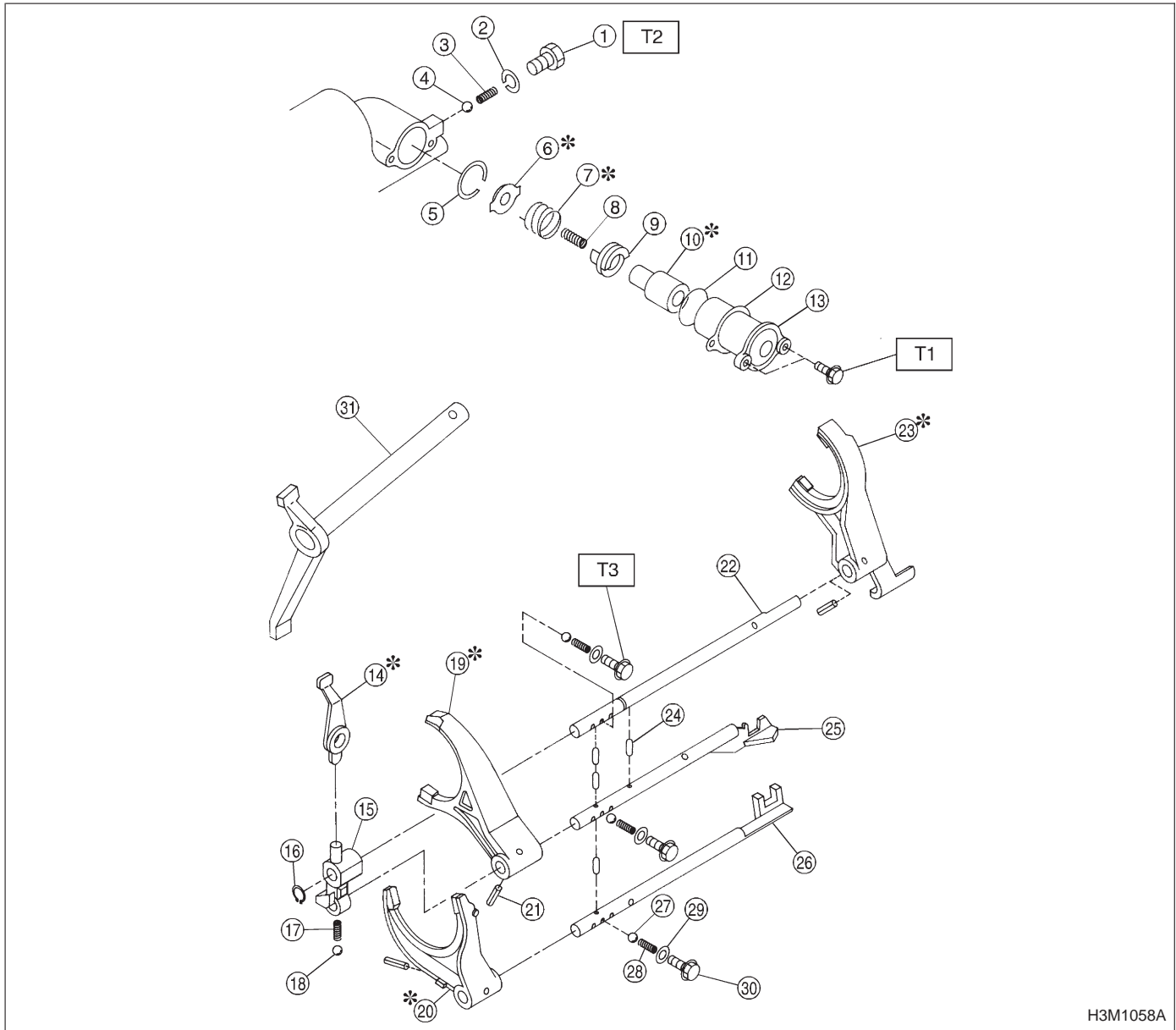
- ① Plug
- ② Gasket
- ③ Reverse accent spring
- ④ Ball
- ⑤ Snap ring (Inner)
- ⑥ Reverse check plate
- ⑦ Reverse checking spring
- ⑧ Reverse return spring
- ⑨ Reverse checking cam
- ⑩ Reverse accent shaft
- ⑪ O-ring
- ⑫ Adjusting select shim
- ⑬ Reverse checking sleeve

- ⑭ Selector arm
- ⑮ Shifter arm
- ⑯ Reverse shifter lever
- ⑰ Reverse fork rod arm
- ⑱ Snap ring (Outer)
- ⑲ Spring
- ⑳ Ball
- *21 3rd-4th shifter fork
- *22 1st-2nd shifter fork
- 23 Straight pin
- 24 Reverse fork rod
- 25 5th shifter fork
- 26 Interlock plunger

- 27 3rd-4th fork rod
- 28 1st-2nd fork rod
- 29 Ball
- 30 Checking ball spring
- 31 Gasket
- 32 Checking ball plug

Tightening torque: N·m (kg·m, ft·lb)
T1: 6 — 7 (0.6 — 0.7, 4.3 — 5.1)
T2: 9 — 11 (0.9 — 1.1, 6.5 — 8.0)
T3: 18.1 — 21.1
(1.85 — 2.15, 13.4 — 15.6)

2. FWD MODEL



H3M1058A

- ① Plug
- ② Gasket
- ③ Reverse accent spring
- ④ Ball
- ⑤ Snap ring (Inner)
- ⑥ Reverse check plate
- ⑦ Reverse check spring
- ⑧ Reverse return spring
- ⑨ Reverse check cam
- ⑩ Reverse accent shaft
- ⑪ O-ring
- ⑫ Adjusting select shim
- ⑬ Reverse check sleeve

- ⑭ Reverse shifter lever
- ⑮ Reverse fork rod arm
- ⑯ Snap ring (Outer)
- ⑰ Spring
- ⑱ Ball
- ⑲ 3rd-4th shifter fork
- ⑳ 1st-2nd shifter fork
- ㉑ Straight pin
- ㉒ Reverse fork rod
- ㉓ 5th shifter fork
- ㉔ Interlock plunger
- ㉕ 3rd-4th fork rod
- ㉖ 1st-2nd fork rod

- ㉗ Ball
- ㉘ Checking ball spring
- ㉙ Gasket
- ㉚ Checking ball plug
- ㉛ Shifter arm

Tightening torque: N·m (kg·m, ft·lb)
T1: 6.4±0.5 (0.65±0.05, 4.7±0.4)
T2: 10±1 (1.0±0.1, 7.2±0.7)
T3: 19.6±1.5
(2.00±0.15, 14.5±1.1)