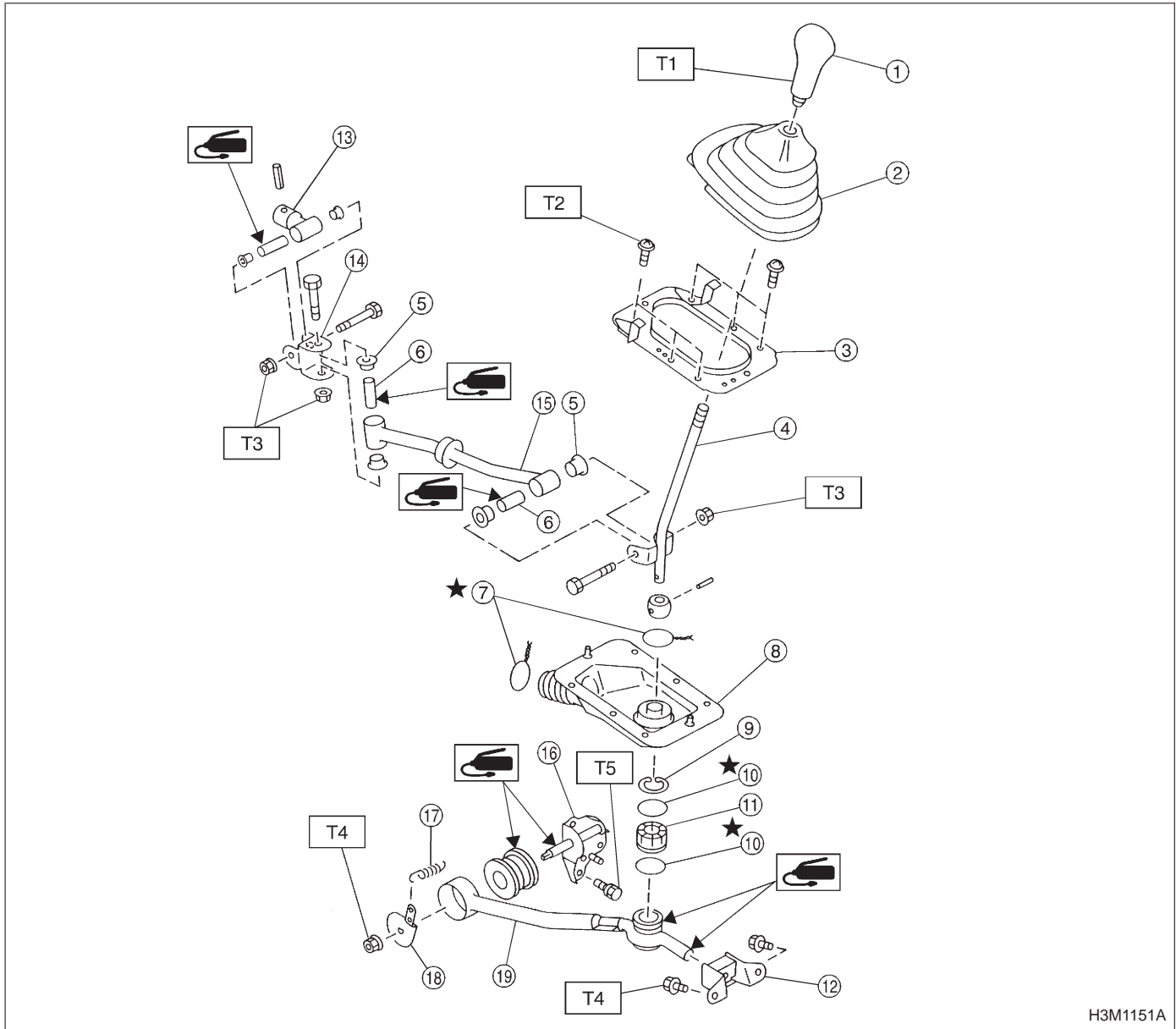


2. Manual Transmission (AWD Model)



H3M1151A

- ① Gear shift knob
- ② Console boot
- ③ Boot plate
- ④ Gear shift lever
- ⑤ Bush
- ⑥ Spacer
- ⑦ Locking wire
- ⑧ Boot
- ⑨ Snap ring
- ⑩ O-ring
- ⑪ Bush
- ⑫ Cushion rubber
- ⑬ Boss
- ⑭ Joint

- ⑮ Rod
- ⑯ Bracket
- ⑰ Spring
- ⑱ Washer
- ⑲ Stay

Tightening torque: N·m (kg·m, ft·lb)
T1: 4 – 5 (0.4 – 0.5, 2.9 – 3.6)
T2: 3 – 6 (0.3 – 0.6, 2.2 – 4.3)
T3: 9 – 15 (0.9 – 1.5, 6.5 – 10.8)
T4: 13 – 23 (1.3 – 2.3, 9 – 17)
T5: 25 – 34 (2.5 – 3.5, 18 – 25)