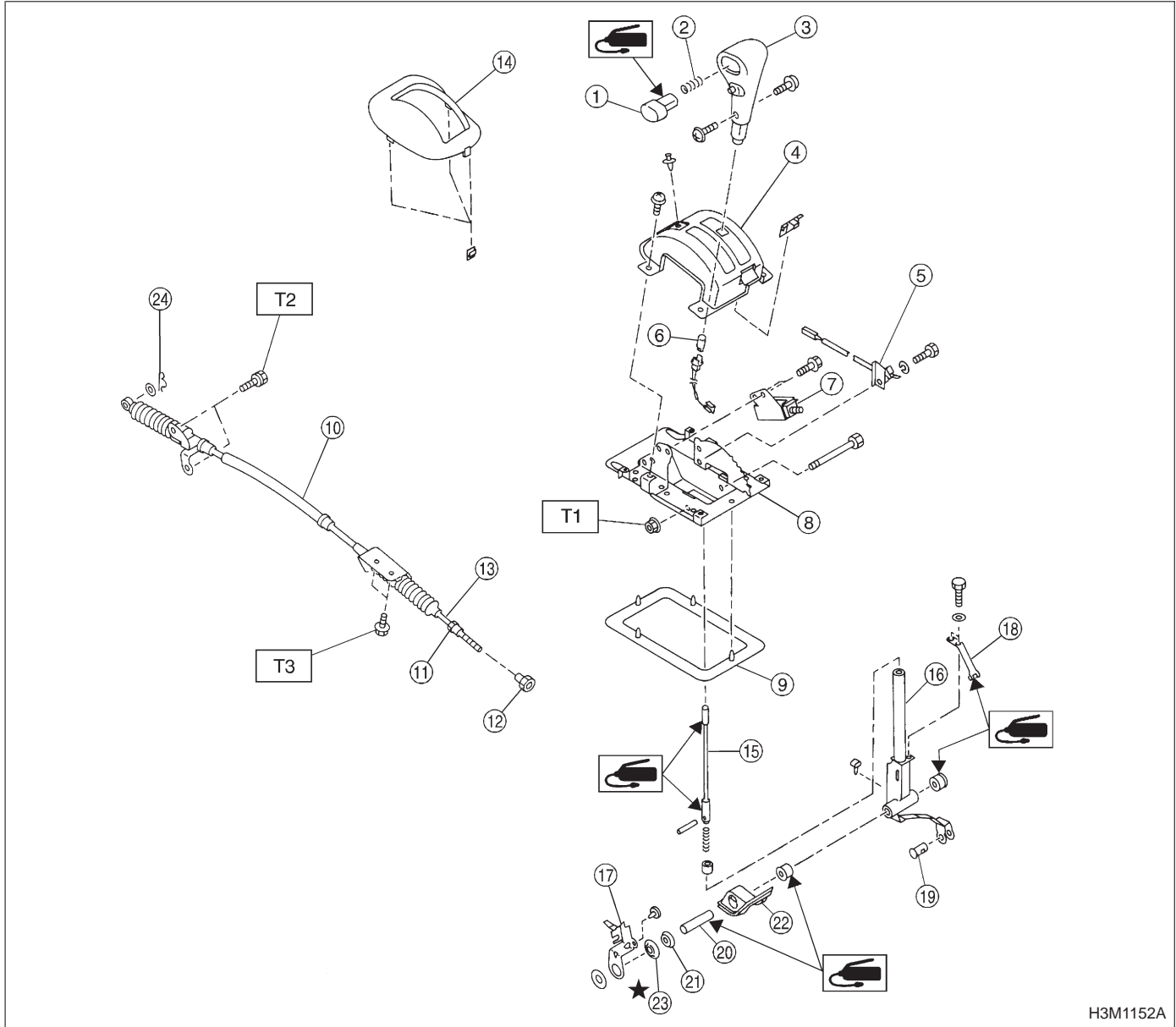


3. Automatic Transmission



H3M1152A

- ① Button
- ② Spring
- ③ Grip
- ④ Indicator cover
- ⑤ "P" position switch
- ⑥ Indicator light bulb
- ⑦ Shift-lock solenoid
- ⑧ Plate
- ⑨ Packing
- ⑩ Outer cable
- ⑪ Nut
- ⑫ Nut
- ⑬ Inner cable
- ⑭ Panel
- ⑮ Rod

- ⑯ Selector lever
- ⑰ Lock plate
- ⑱ Detention spring
- ⑲ Pin
- ⑳ Spacer
- ㉑ Washer
- ㉒ Boot
- ㉓ Spacer
- ㉔ Snap pin

**Tightening torque: N-m (kg-m, ft-lb)**  
**T1: 9 — 15 (0.9 — 1.5, 6.5 — 10.8)**  
**T2: 10 — 18 (1.0 — 1.8, 7 — 13)**  
**T3: 13 — 23 (1.3 — 2.3, 9 — 17)**