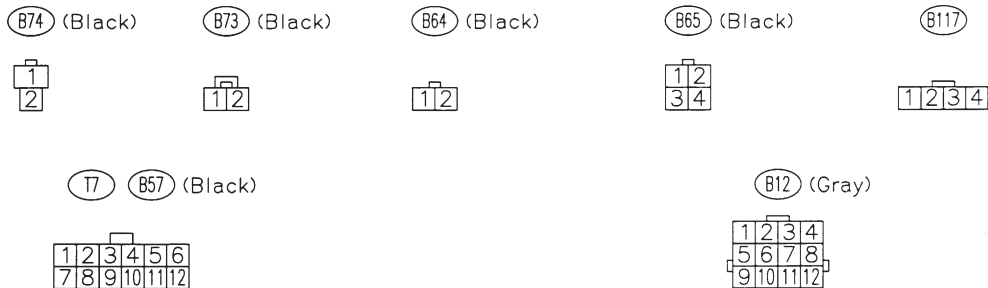
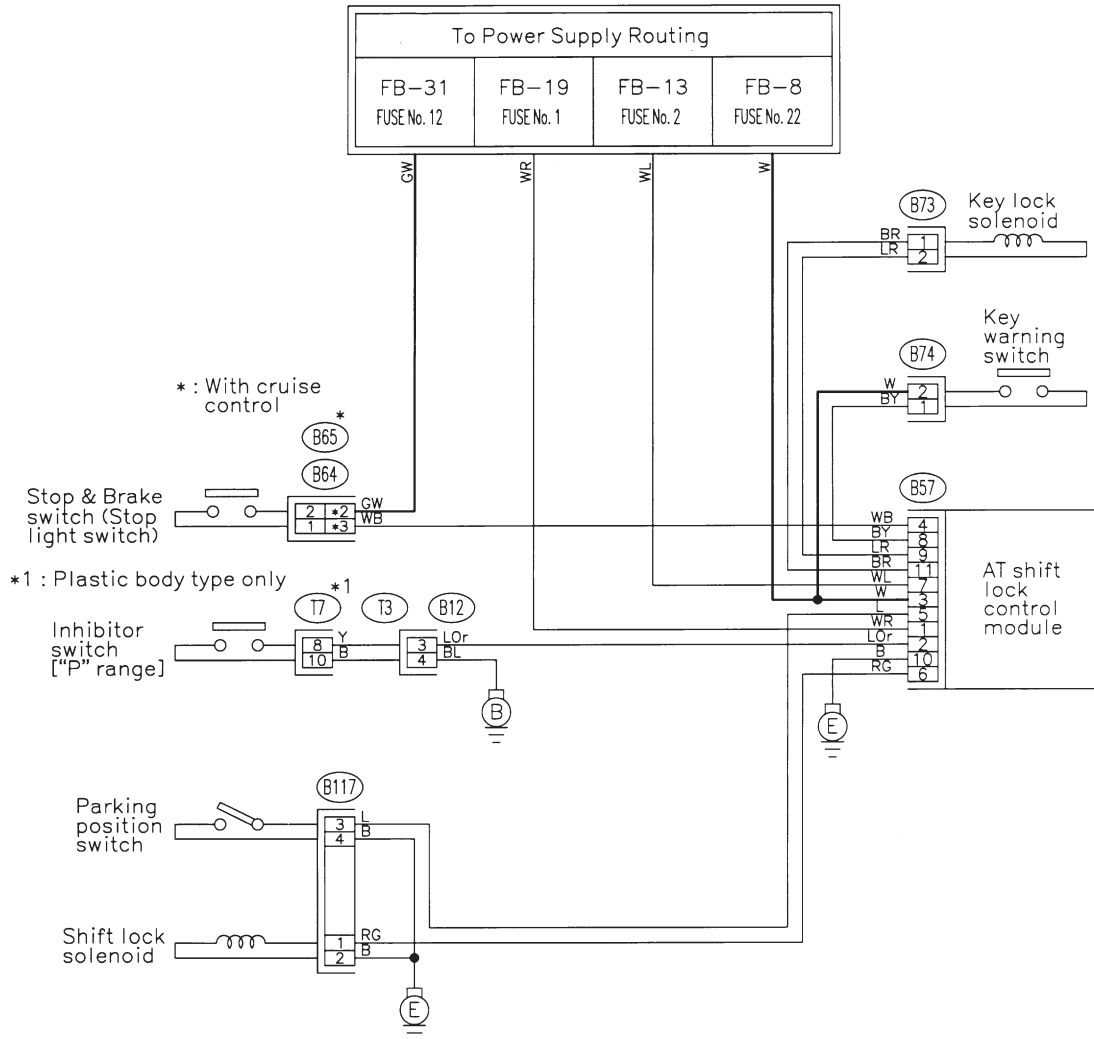


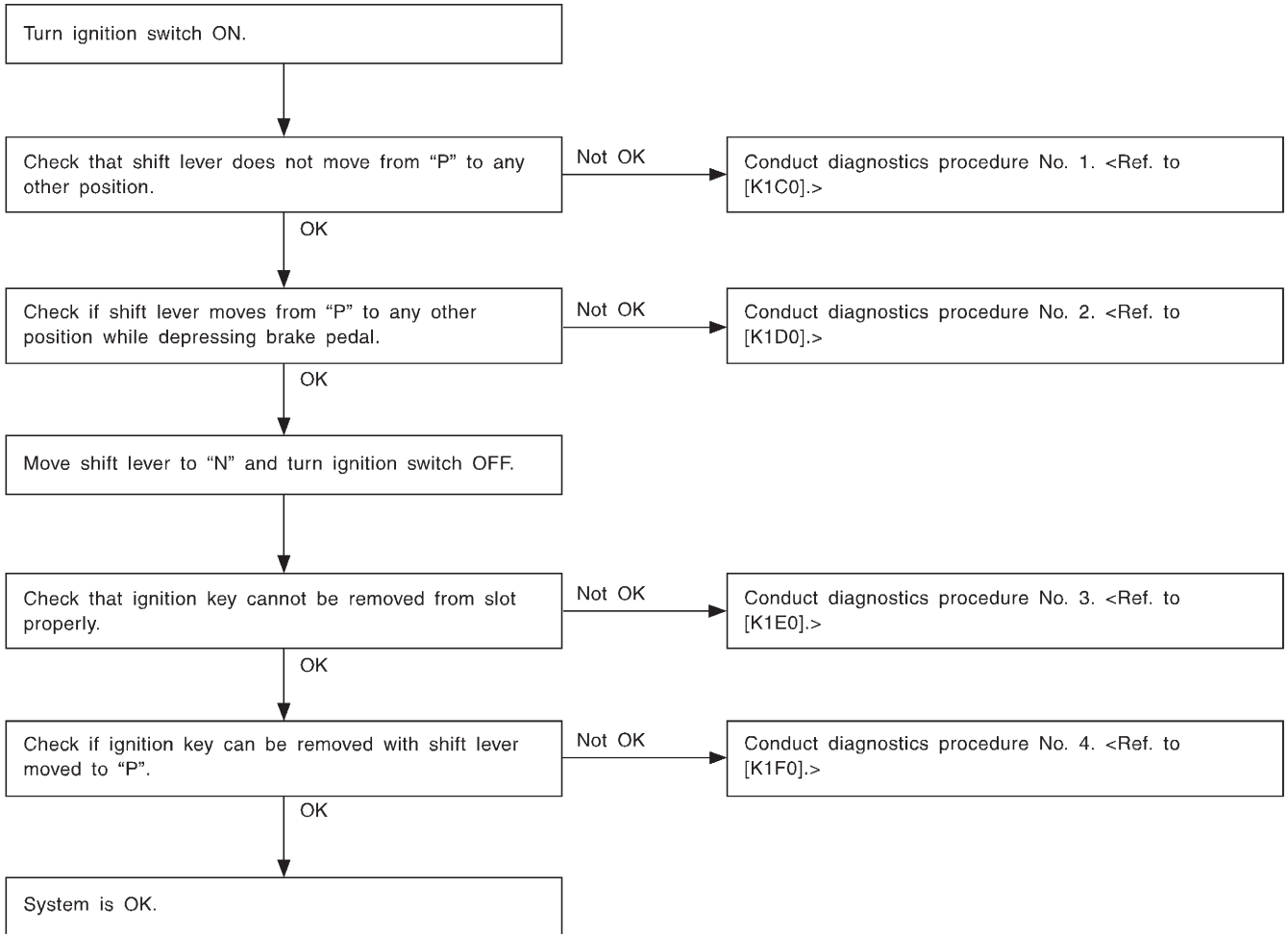
1. AT Shift Lock System

A: WIRING DIAGRAM

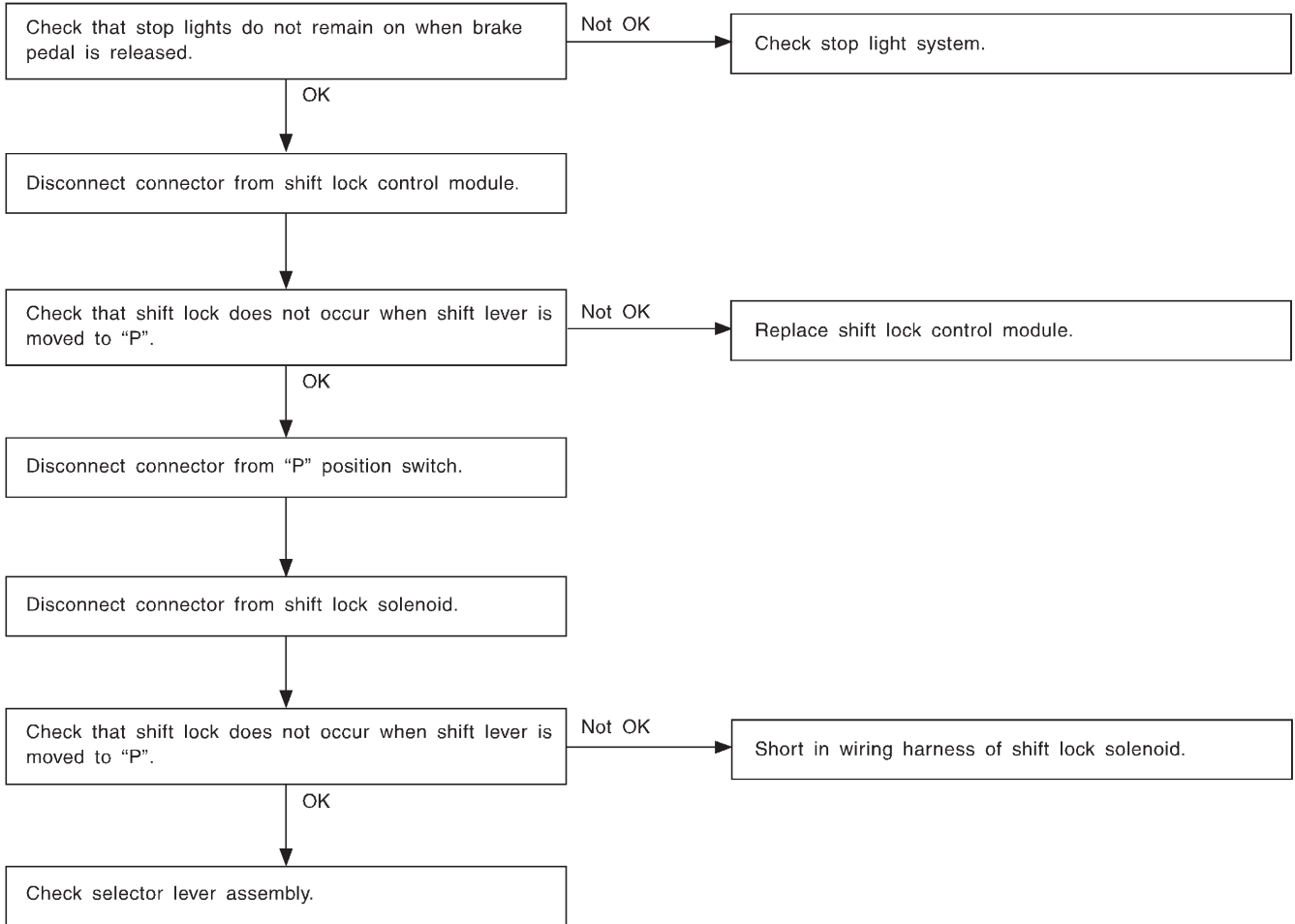


GU42-03

B: BASIC DIAGNOSTICS CHART

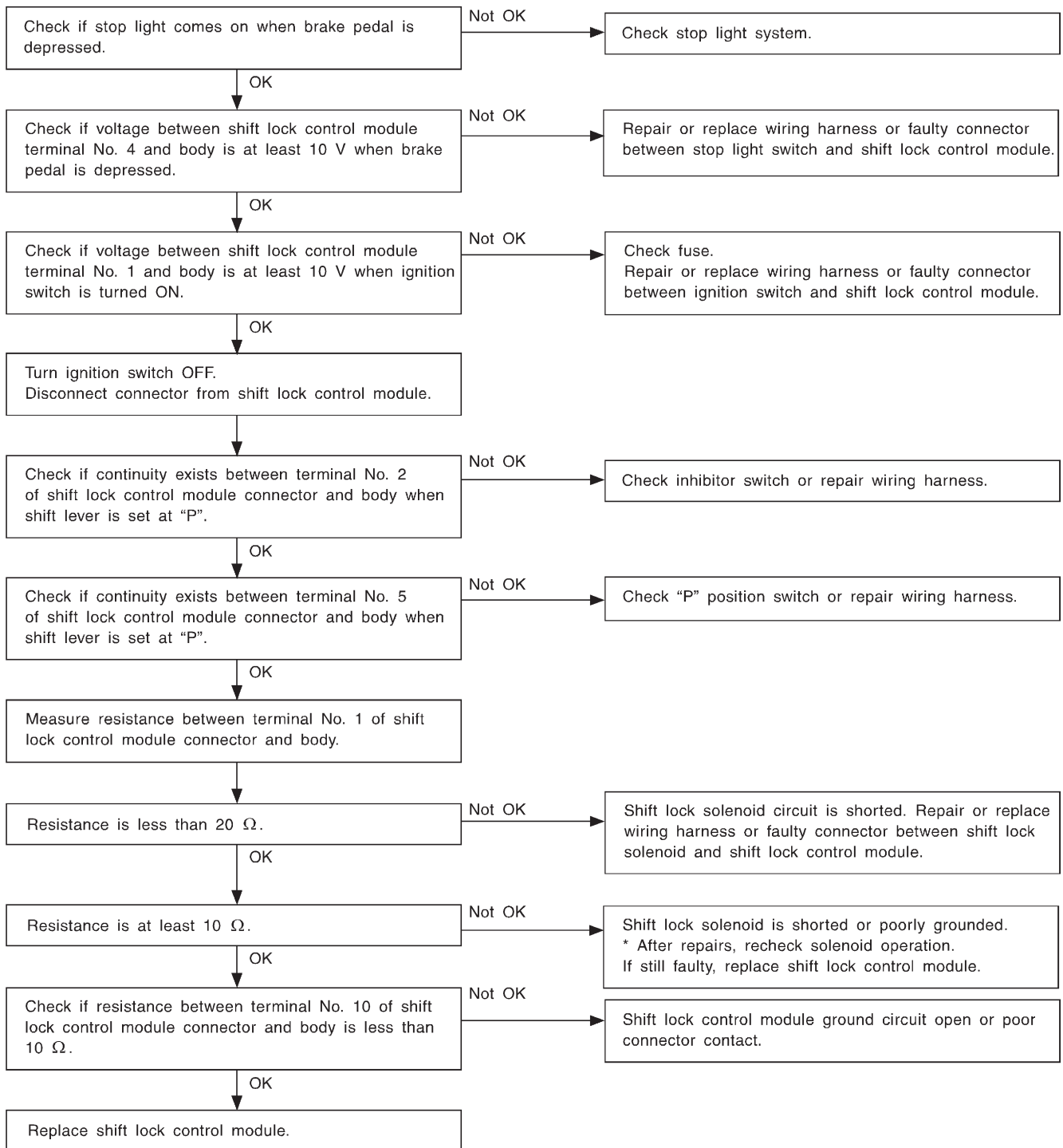


C: DIAGNOSTICS PROCEDURE NO. 1

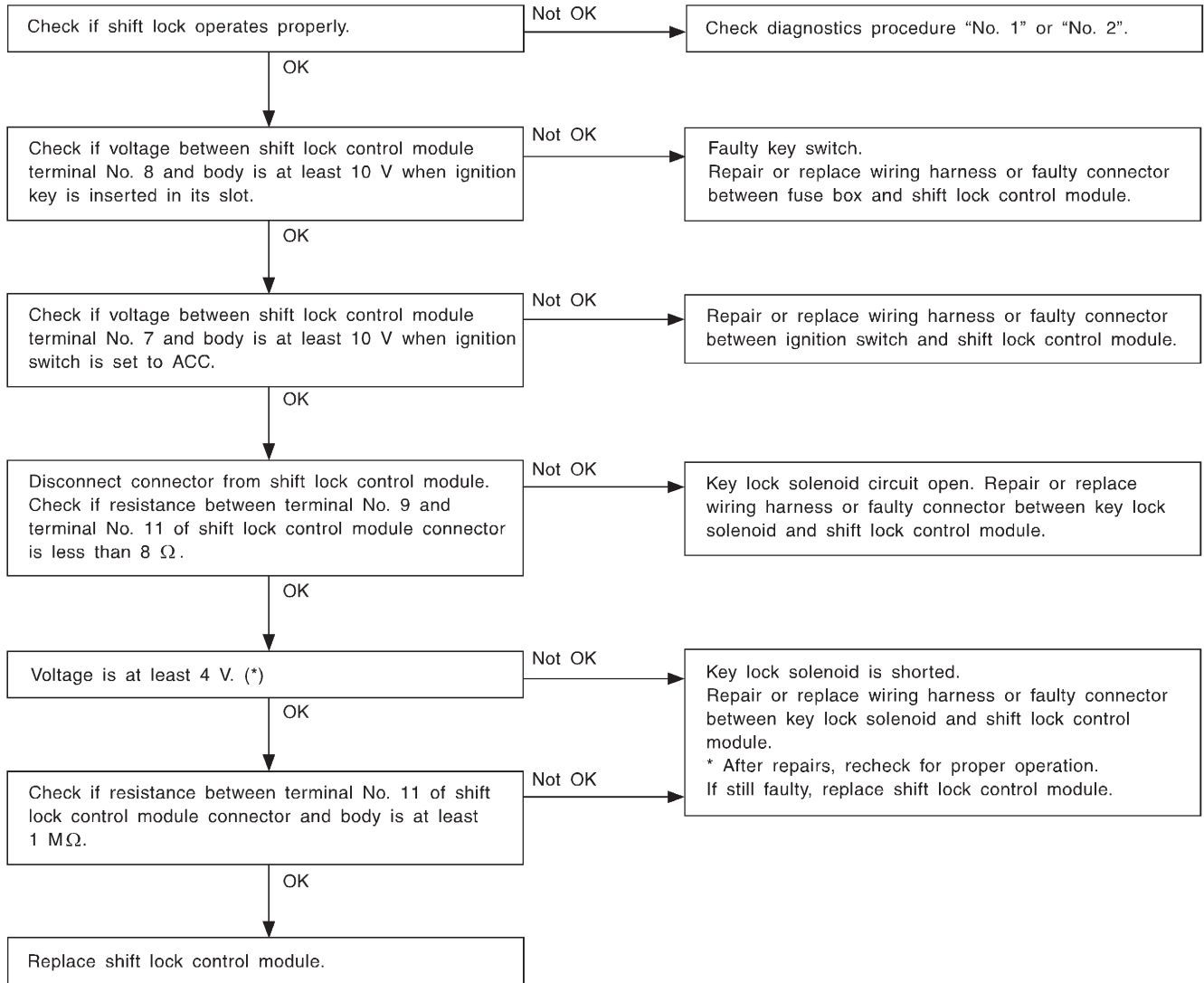


H6M0505

D: DIAGNOSTICS PROCEDURE NO. 2 (SHIFT LOCK DOES NOT RELEASE.)

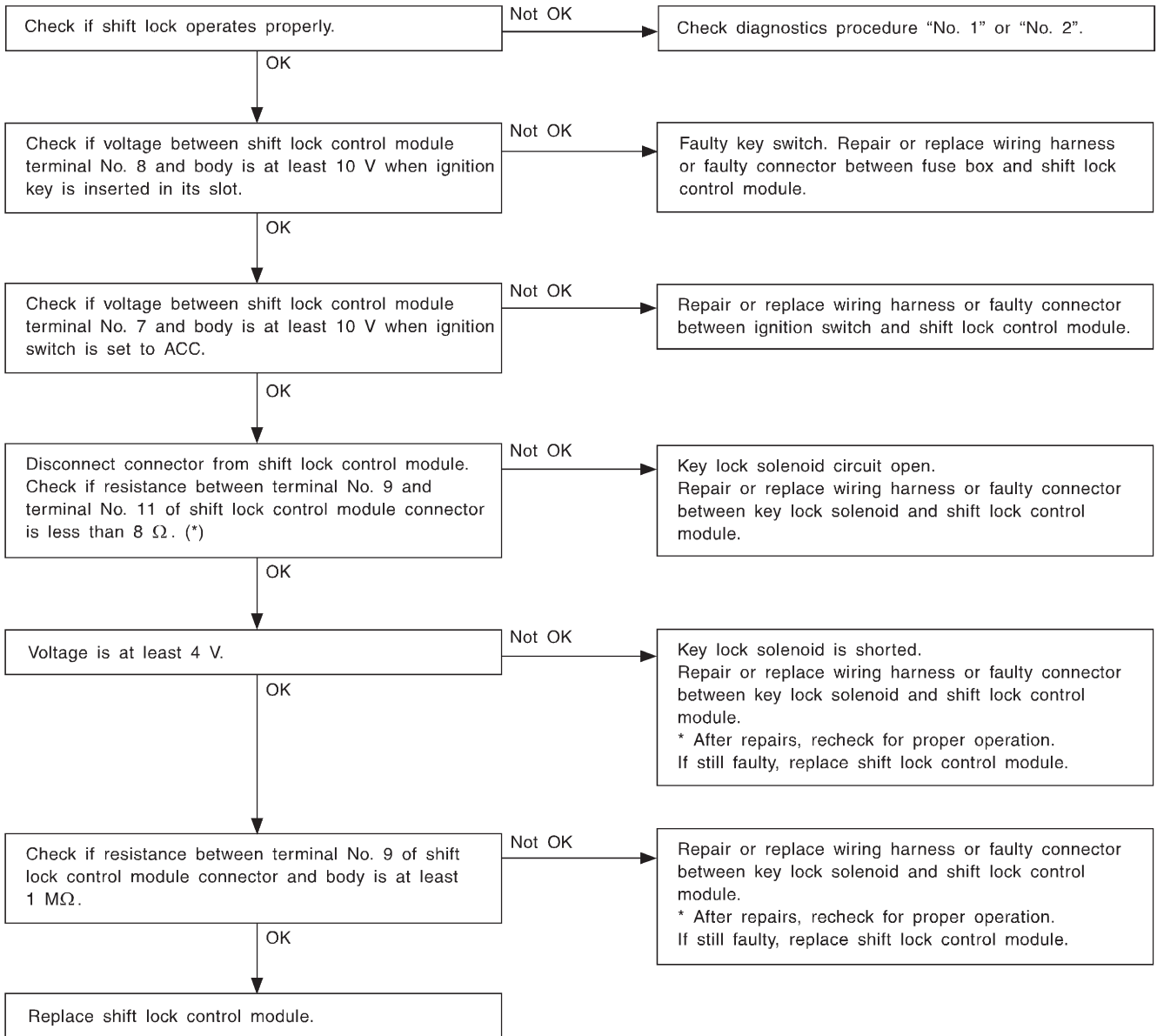


E: DIAGNOSTICS PROCEDURE NO. 3 (KEY INTERLOCK DOES NOT OPERATE.)



*: When conducting operational checks of the key lock solenoid, do not apply 12 V to solenoid for more than one second, since this may break solenoid circuit.

F: DIAGNOSTICS PROCEDURE NO. 4 (KEY INTERLOCK DOES NOT RELEASE.)



*: When conducting operational checks of the key lock solenoid, do not apply 12 V to solenoid for more than one second, since this may break solenoid circuit.