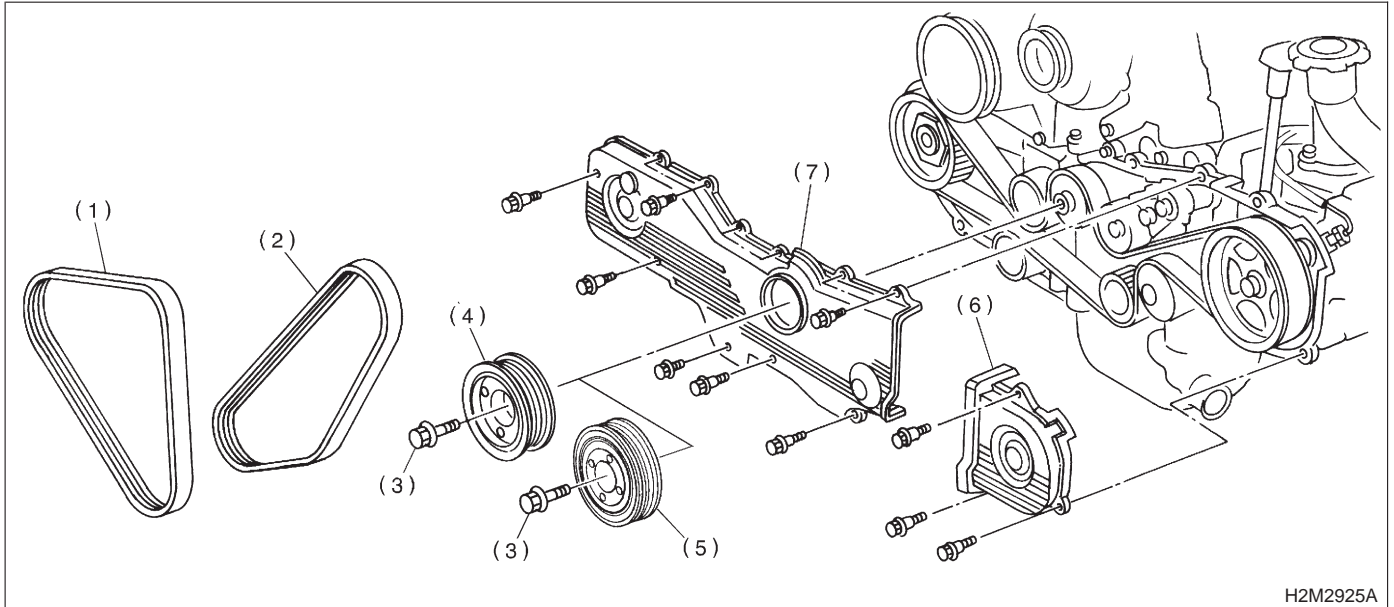


2. Timing Belt

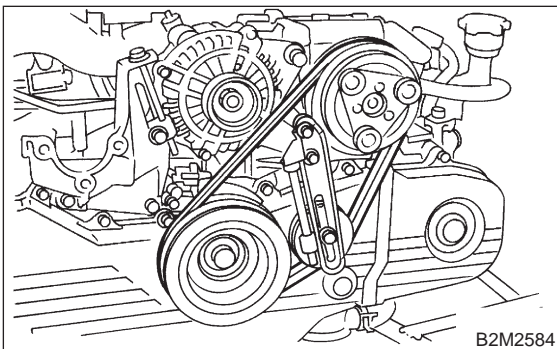
A: REMOVAL

1. CRANKSHAFT PULLEY AND BELT COVER

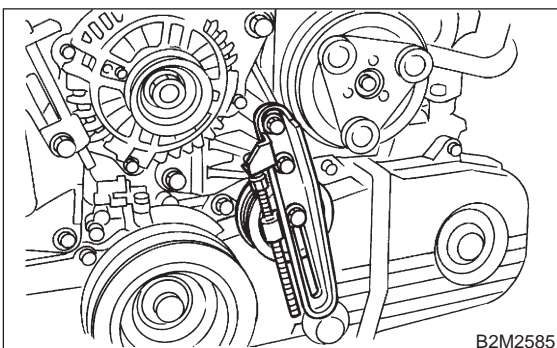


- | | | |
|---------------------------------------|---------------------------------------|--------------------------------------|
| (1) Front side V-belt | (4) Crankshaft Pulley (2200 cc model) | (6) Belt cover (LH) |
| (2) Rear side V-belt (With A/C model) | (5) Crankshaft pulley (2500 cc model) | (7) Front belt cover (2500 cc model) |
| (3) Crankshaft pulley bolt | | |

1) Remove A/C belt. (With A/C model)



2) Remove A/C belt tensioner. (With A/C model)

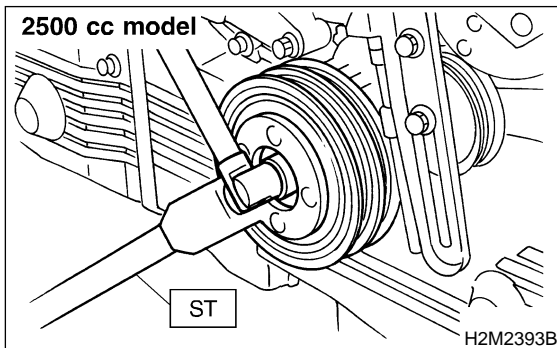
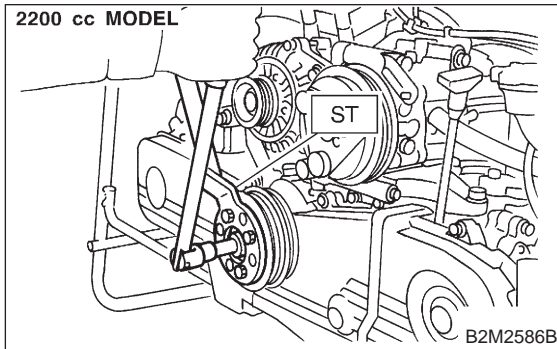


3) Remove crankshaft pulley bolt. To lock crankshaft, use ST.

ST 499977000 (2200 cc model)

ST 499977100 (2500 cc model)

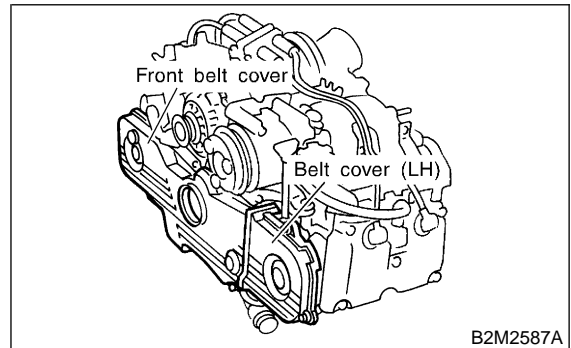
CRANKSHAFT PULLEY WRENCH



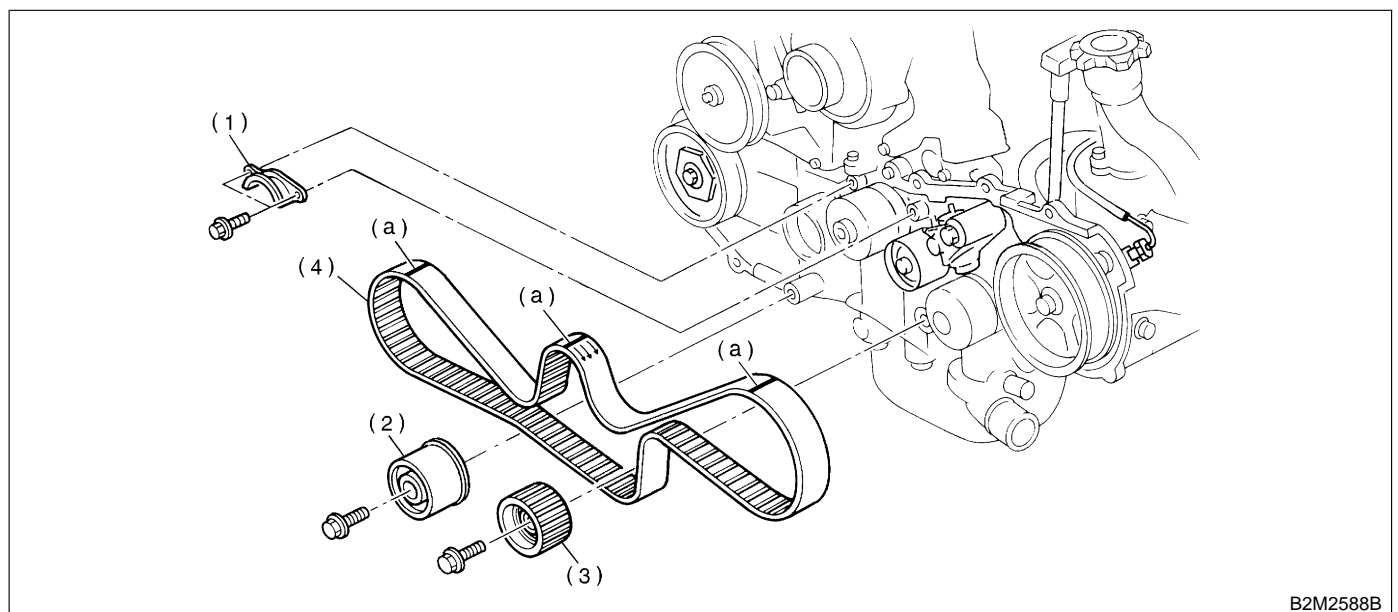
4) Remove crankshaft pulley.

5) Remove belt cover (LH).

6) Remove front belt cover.



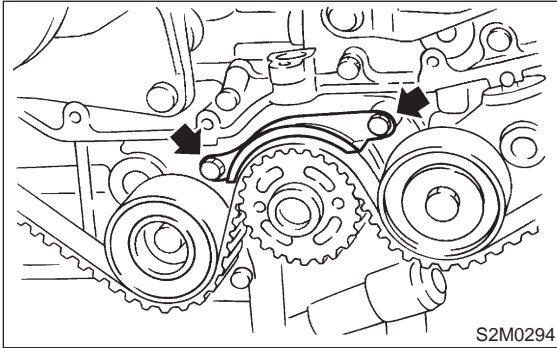
2. TIMING BELT



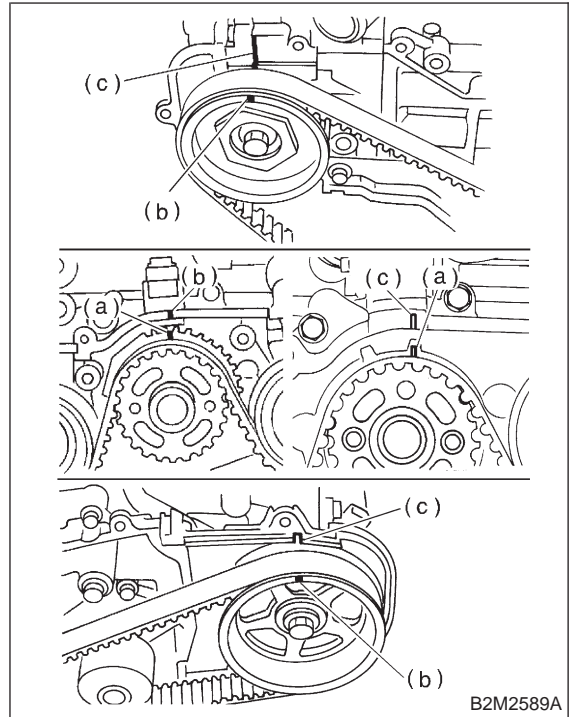
- (a) Alignment mark
- (1) Timing belt guide (MT vehicles only)

- (2) Belt idler (No. 2)
- (3) Belt idler No. 2
- (4) Timing belt

1) Remove timing belt guide. (MT vehicles only)

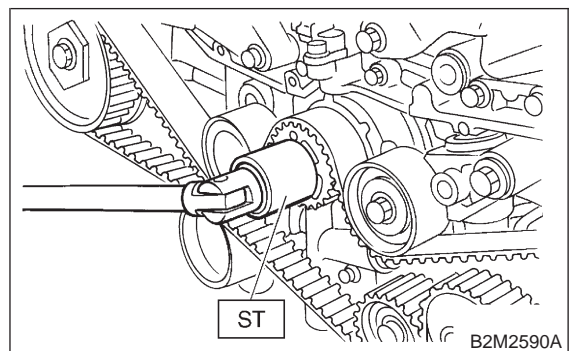


2) If alignment mark (a) and/or arrow mark (which indicates rotation direction) on timing belt fade away, put new marks before removing timing belt as shown in figure:

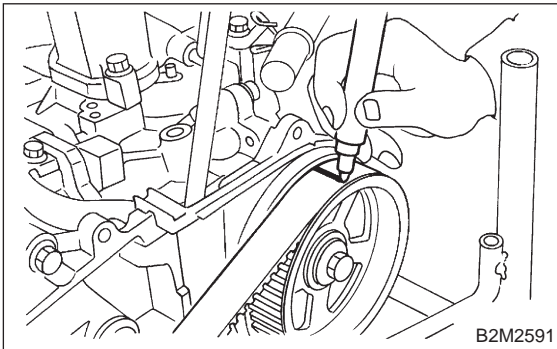


(1) Turn crankshaft using ST, and align alignment marks (c) on crankshaft sprocket, and left side camshaft sprocket with notch (c) of belt cover, and align the right side camshaft sprocket with notch (c) on the mating surface of camshaft cap and cylinder head.

ST 499987500 CRANKSHAFT SOCKET

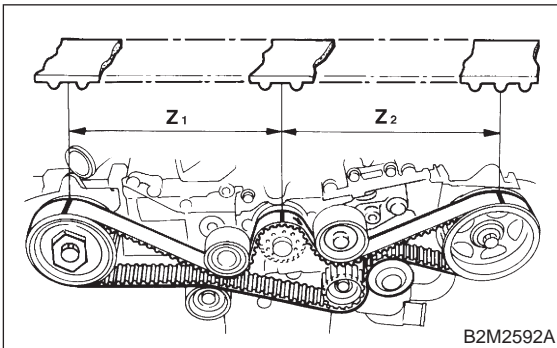


(2) Using white paint, put alignment and/or arrow marks on timing belts in relation to the sprockets.



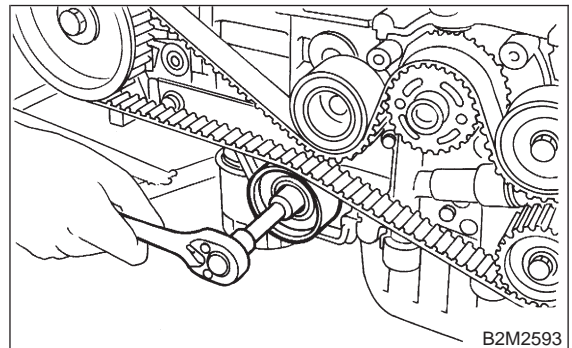
Specified data:

Z_1 : 44 tooth length
 Z_2 : 40.5 tooth

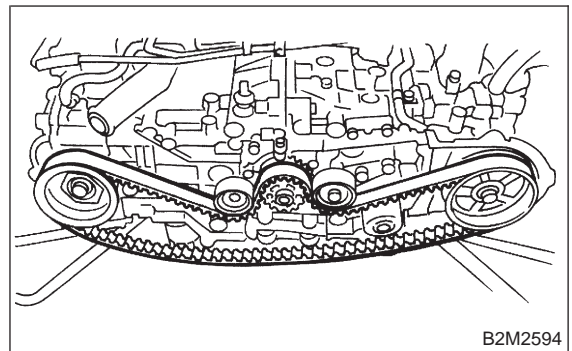


3) Remove belt idler (No. 2).

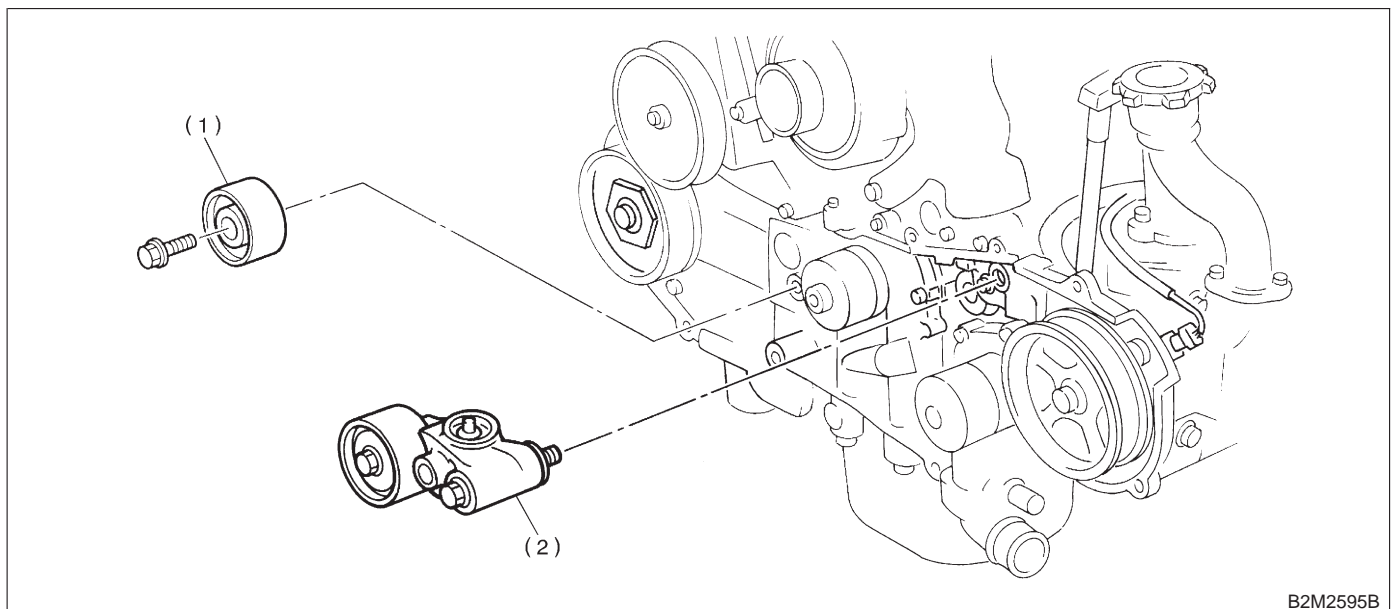
4) Remove belt idler No. 2.



5) Remove timing belt.



3. BELT IDLER AND AUTOMATIC BELT TENSION ADJUSTER ASSEMBLY



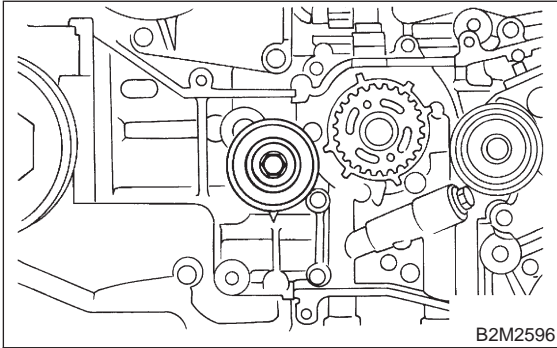
(1) Belt idler (No. 1)

(2) Automatic belt tension adjuster ASSY

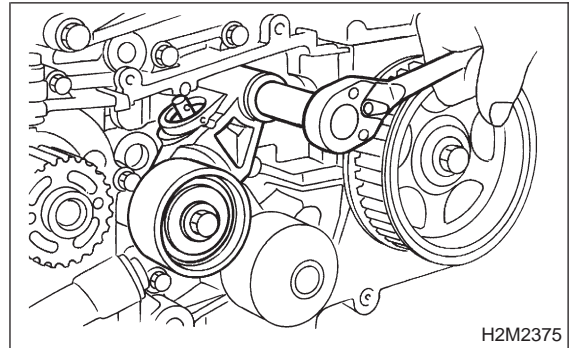
2-3 [W2A4]
2. Timing Belt

SERVICE PROCEDURE

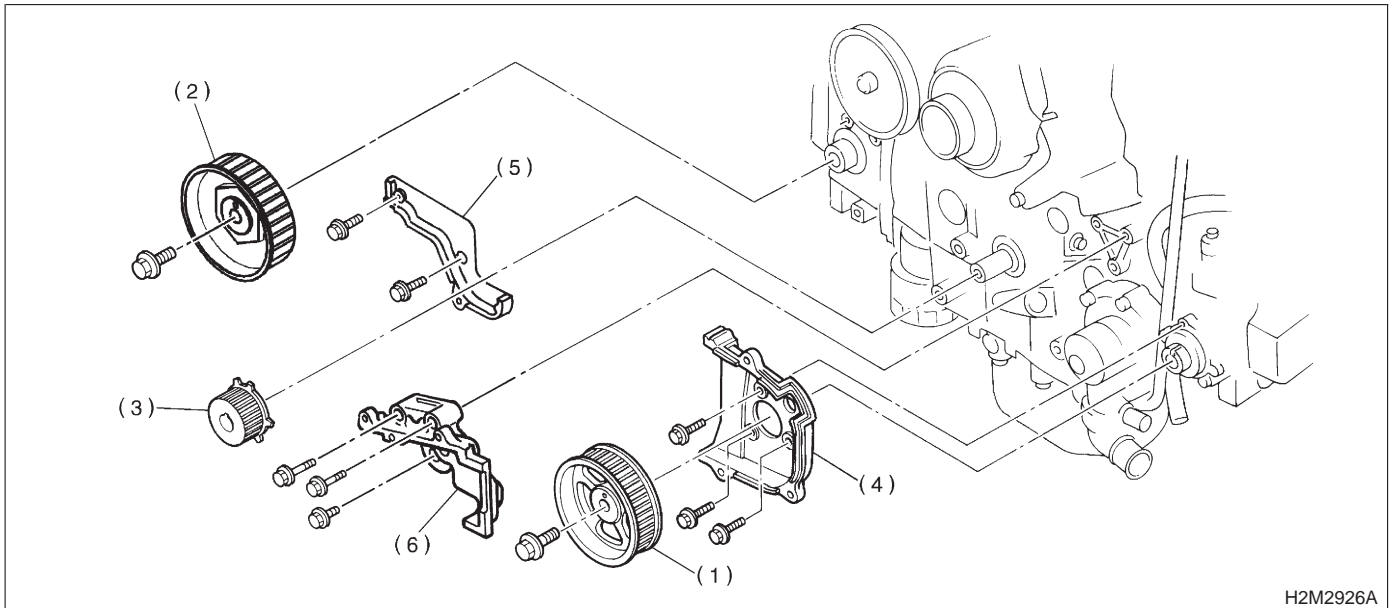
1) Remove belt idler (No. 1).



2) Remove automatic belt tension adjuster assembly.



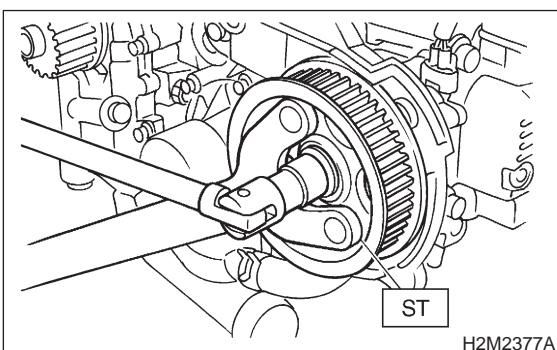
4. CAMSHAFT AND CRANKSHAFT SPROCKET



- | | |
|---|---------------------------|
| (1) Camshaft sprocket No. 2 | (4) Belt cover No. 2 (LH) |
| (2) Camshaft sprocket No. 1 | (5) Belt cover No. 2 (RH) |
| (3) Crankshaft sprocket (California spec. vehicles) | (6) Tensioner bracket |

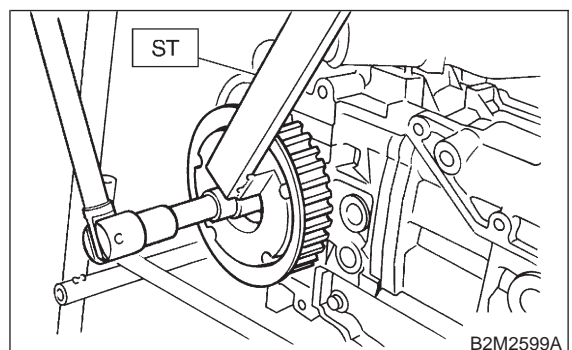
1) Remove camshaft sprocket No. 2. To lock camshaft, use ST.

ST 499207100 CAMSHAFT SPROCKET WRENCH

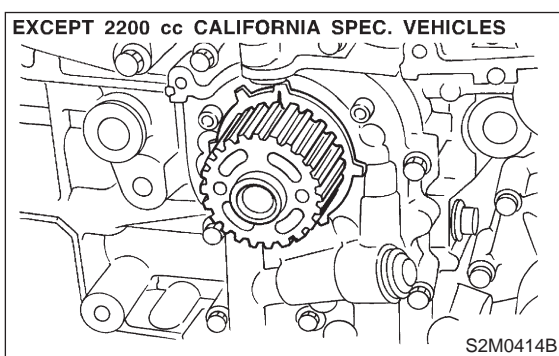
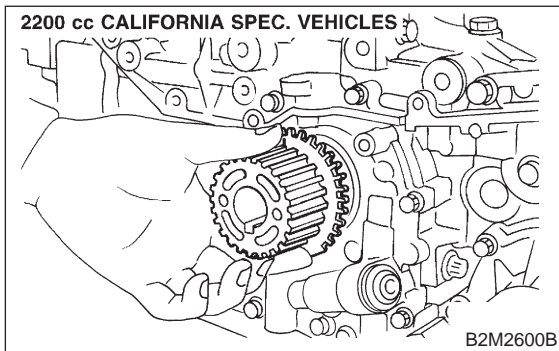


2) Remove camshaft sprocket No. 1. To lock camshaft, use ST.

ST 499207400 CAMSHAFT SPROCKET WRENCH

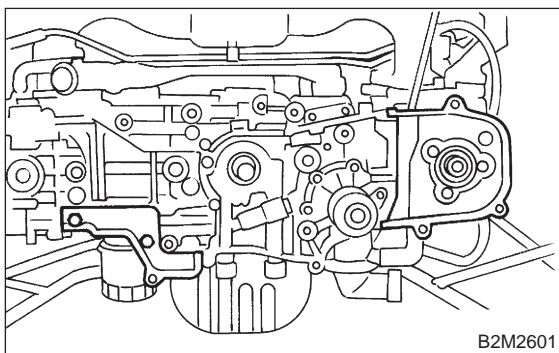


3) Remove crankshaft sprocket.

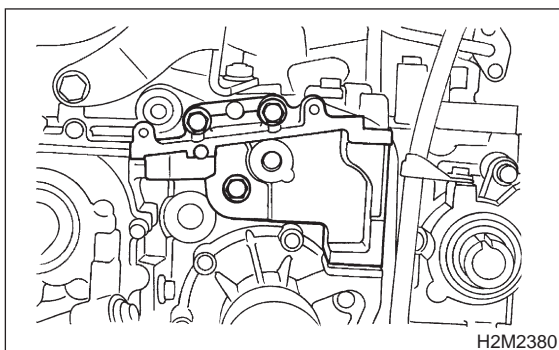


4) Remove belt cover No. 2 (LH).
5) Remove belt cover No. 2 (RH).

CAUTION:
Do not damage or lose the seal rubber when removing belt covers.



6) Remove tensioner bracket.



B: INSPECTION

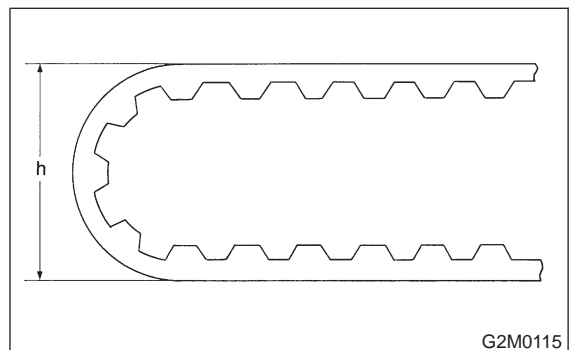
1. TIMING BELT

- 1) Check timing belt teeth for breaks, cracks, and wear. If any fault is found, replace belt.
- 2) Check the condition of back side of belt; if any crack is found, replace belt.

CAUTION:

- Be careful not to let oil, grease or coolant contact the belt. Remove quickly and thoroughly if this happens.
- Do not bend the belt sharply.

Bending radius: h
60 mm (2.36 in) or more



2. AUTOMATIC BELT TENSION ADJUSTER

- 1) Visually check oil seals for leaks, and rod ends for abnormal wear or scratches. If necessary, replace faulty parts.

CAUTION:

Slight traces of oil at rod's oil seal does not indicate a problem.

- 2) Check that the adjuster rod does not move when a pressure of 294 N (30 kg, 66 lb) is applied to it. This is to check adjuster rod stiffness.
- 3) If the adjuster rod is not stiff and moves freely when applying 294 N (30 kg, 66 lb), check it using the following procedures:

- (1) Slowly press the adjuster rod down to the end surface of the cylinder. Repeat this motion 2 or 3 times.
- (2) With the adjuster rod moved all the way up, apply a pressure of 294 N (30 kg, 66 lb) to it. Check adjuster rod stiffness.
- (3) If the adjuster rod is not stiff and moves down, replace the automatic belt tension adjuster assembly with a new one.

CAUTION:

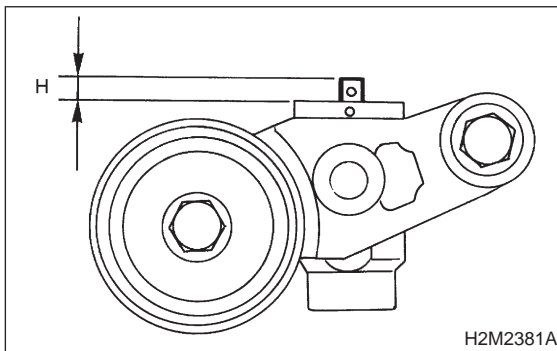
- Always use a vertical type pressing tool to move the adjuster rod down.
- Do not use a lateral type vise.
- Push adjuster rod vertically.

- Press-in the push adjuster rod gradually taking more than three minutes.
- Do not allow press pressure to exceed 9,807 N (1,000 kg, 2,205 lb).
- Press the adjuster rod as far as the end surface of the cylinder. Do not press the adjuster rod into the cylinder. Doing so may damage the cylinder.

4) Measure the extension of rod beyond the body. If it is not within specifications, replace with a new one.

Rod extension: H

$5.7 \pm 0.5 \text{ mm (} 0.224 \pm 0.020 \text{ in)}$



3. BELT TENSION PULLEY

- 1) Check mating surfaces of timing belt and contact point of adjuster rod for abnormal wear or scratches. Replace automatic belt tension adjuster assembly if faulty.
- 2) Check tension pulley for smooth rotation. Replace if noise or excessive play is noted.
- 3) Check tension pulley for grease leakage.

4. BELT IDLER

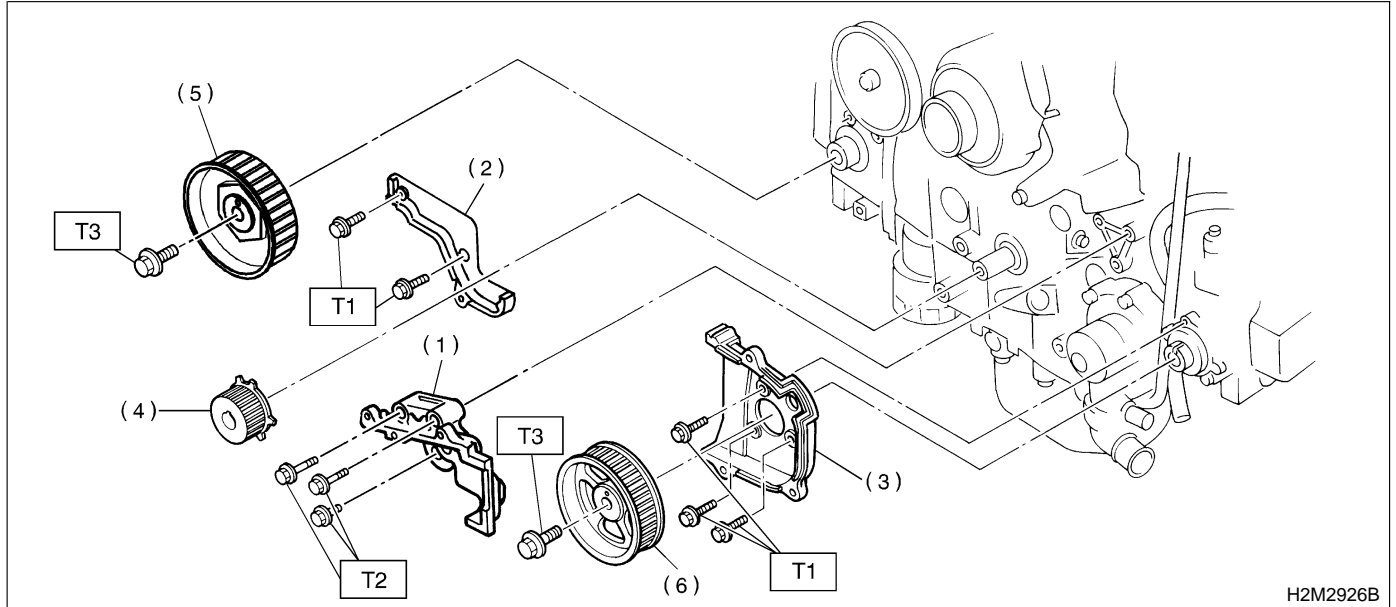
- 1) Check belt idler for smooth rotation. Replace if noise or excessive play is noted.
- 2) Check belt outer contacting surfaces of idler pulley for abnormal wear and scratches.
- 3) Check belt idler for grease leakage.

5. CAMSHAFT AND CRANKSHAFT SPROCKET

- 1) Check sprocket teeth for abnormal wear and scratches.
- 2) Make sure there is no free play between sprocket and key.
- 3) Check crankshaft sprocket notch for sensor for damage and contamination of foreign matter.

C: INSTALLATION

1. CAMSHAFT AND CRANKSHAFT SPROCKET



H2M2926B

- | | |
|---------------------------|-----------------------------|
| (1) Tensioner bracket | (5) Camshaft sprocket No. 1 |
| (2) Belt cover No. 2 (RH) | (6) Camshaft sprocket No. 2 |
| (3) Belt cover No. 2 (LH) | |
| (4) Crankshaft sprocket | |

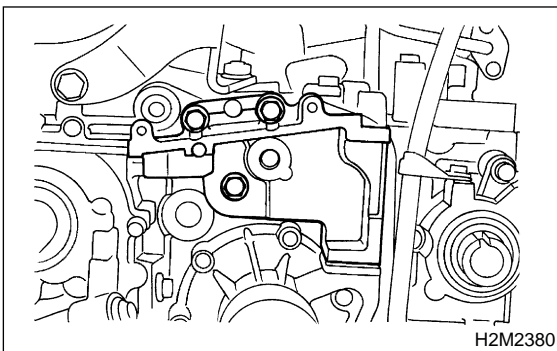
Tightening torque: N-m (kg-m, ft-lb)

T1: 5±1 (0.5±0.1, 3.6±0.7)

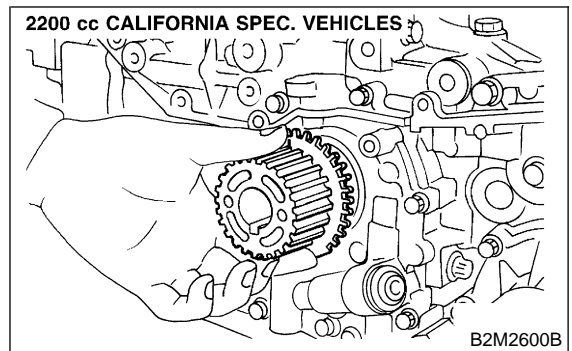
T2: 25±3 (2.5±0.3, 18.1±2.2)

T3: 78±5 (8.0±0.5, 57.9±3.6)

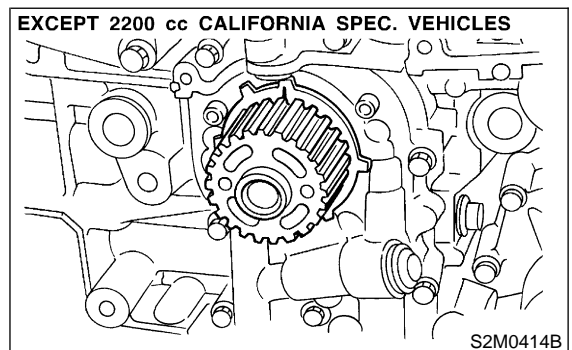
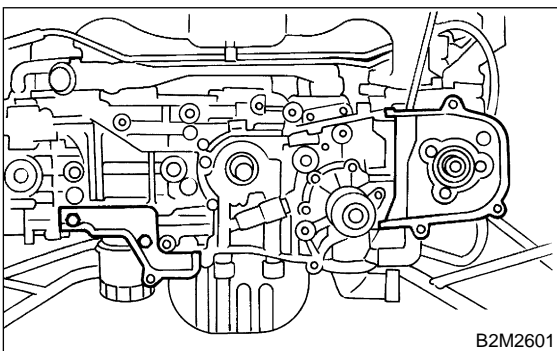
1) Install tensioner bracket.



4) Install crankshaft sprocket.

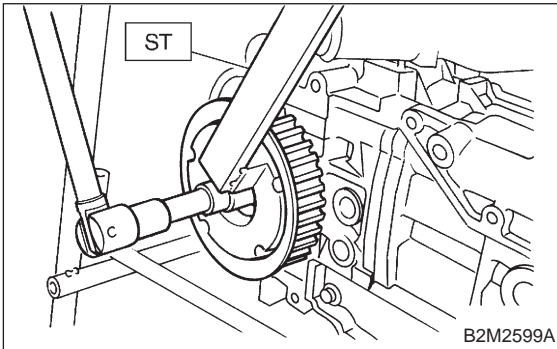


- 2) Install belt cover No. 2 (RH).
3) Install belt cover No. 2 (LH).



5) Install camshaft sprocket No. 1. To lock camshaft, use ST.

ST 499207400 CAMSHAFT SPROCKET
WRENCH

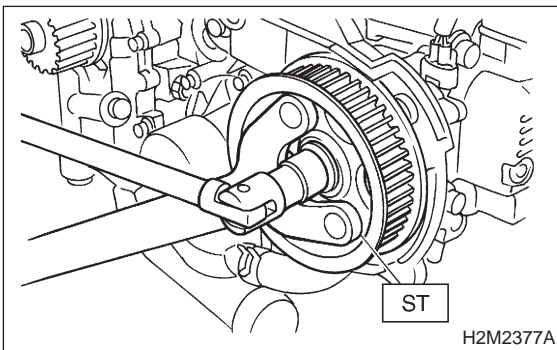


6) Install camshaft sprocket No. 2. To lock camshaft, use ST.

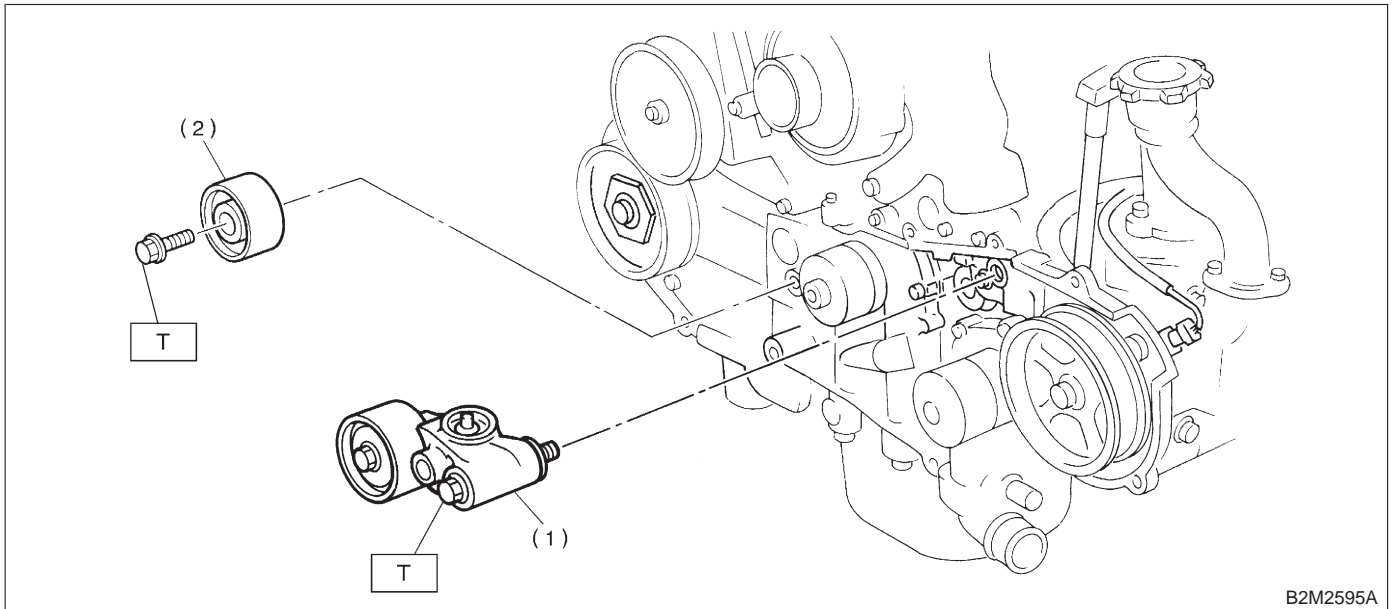
ST 499207100 CAMSHAFT SPROCKET
WRENCH

CAUTION:

Do not confuse left and right side camshaft sprockets during installation. The camshaft sprocket No. 2 is identified by a projection used to monitor camshaft position sensor.



2. AUTOMATIC BELT TENSION ADJUSTER ASSEMBLY AND BELT IDLER



B2M2595A

- (1) Automatic belt tension adjuster ASSY (2) Belt idler (No. 1)

Tightening torque: N·m (kg·m, ft·lb)
T: 39±4 (4.0±0.4, 28.9±2.9)

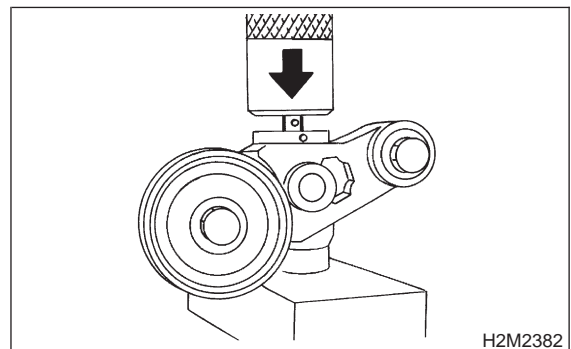
1) Preparation for installation of automatic belt tension adjuster assembly;

CAUTION:

- Always use a vertical type pressing tool to move the adjuster rod down.
- Do not use a lateral type vise.
- Push adjuster rod vertically.
- Be sure to slowly move the adjuster rod down applying a pressure of 294 N (30 kg, 66 lb).
- Press-in the push adjuster rod gradually taking more than three minutes.
- Do not allow press pressure to exceed 9,807 N (1,000 kg, 2,205 lb).
- Press the adjuster rod as far as the end surface of the cylinder. Do not press the adjuster rod into the cylinder. Doing so may damage the cylinder.
- Do not release press pressure until stopper pin is completely inserted.

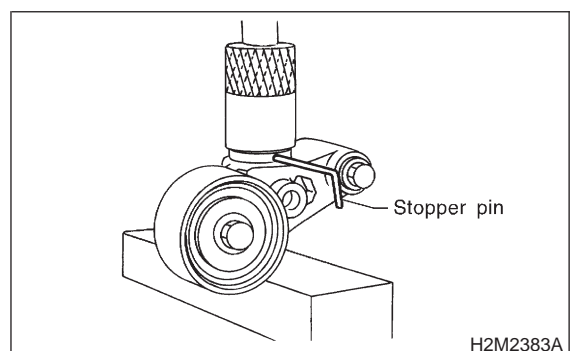
(1) Attach the automatic belt tension adjuster assembly to the vertical pressing tool.

(2) Slowly move the adjuster rod down with a pressure of 294 N (30 kg, 66 lb) until the adjuster rod is aligned with the stopper pin hole in the cylinder.



H2M2382

(3) With a 2 mm (0.08 in) dia. stopper pin or a 2 mm (0.08 in) (nominal) dia. hex bar wrench inserted into the stopper pin hole in the cylinder, secure the adjuster rod.

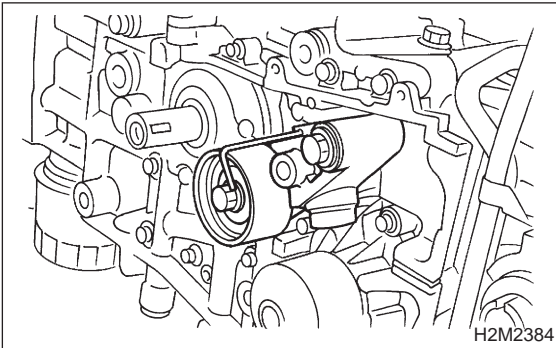


H2M2383A

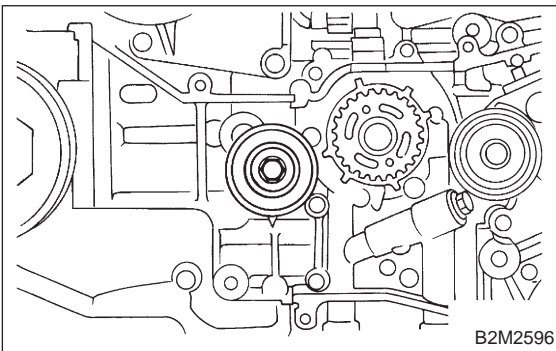
2-3 [W2C2]
2. Timing Belt

SERVICE PROCEDURE

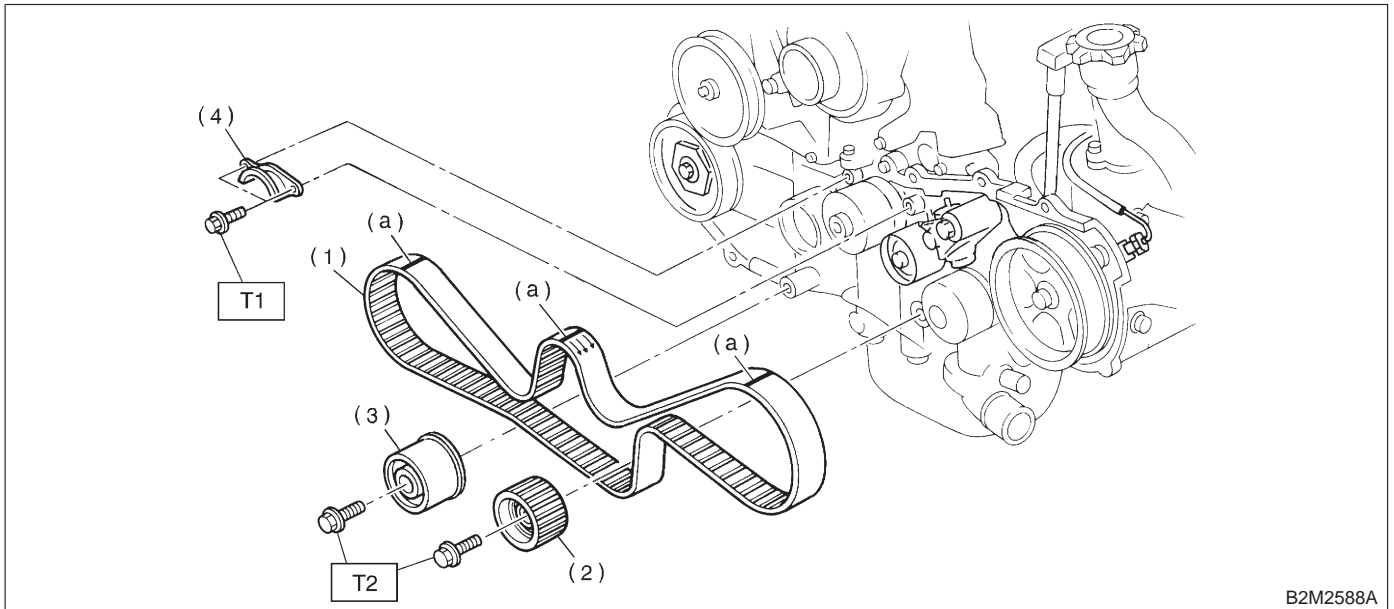
2) Install automatic belt tension adjuster assembly.



3) Install belt idler (No. 1).



3. TIMING BELT



- (a) Alignment mark
- (1) Timing belt
- (2) Belt idler No. 2
- (3) Belt idler (No. 2)
- (4) Timing belt guide (MT vehicles only)

Tightening torque: N·m (kg·m, ft·lb)

T1: 9.8±1.0 (1.0±0.1, 7.2±0.7)

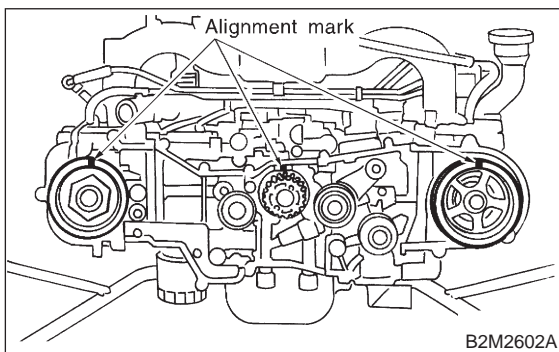
T2: 39±4 (4.0±0.4, 28.9±2.9)

1) Installation of timing belt

(1) Turn camshaft sprocket No. 2 using ST1, and turn camshaft sprocket No. 1 using ST2 so that their alignment marks come to top positions.

ST1 499207100 CAMSHAFT SPROCKET WRENCH

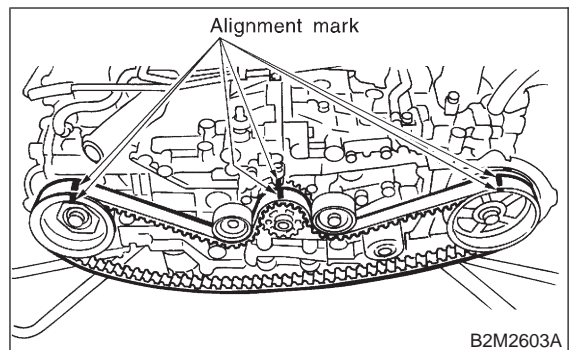
ST2 499207400 CAMSHAFT SPROCKET WRENCH



(2) While aligning alignment mark on timing belt with marks on sprockets, position timing belt properly.

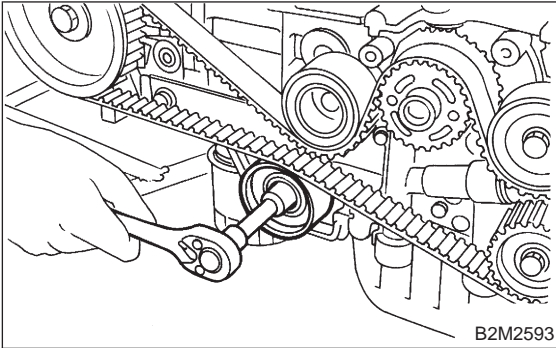
CAUTION:

Ensure belt's rotating direction is correct.



2) Install belt idler No. 2.

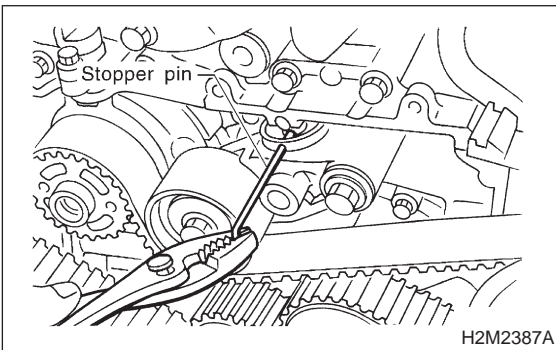
3) Install belt idler (No. 2).



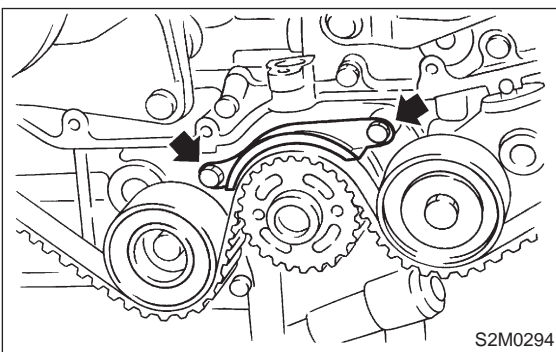
4) After ensuring that the marks on timing belt and camshaft sprockets are aligned, remove stopper pin from belt tensioner adjuster.

CAUTION:

After properly installing timing belt, remove rocker cover and ensure that the valve lash adjuster contains no air.



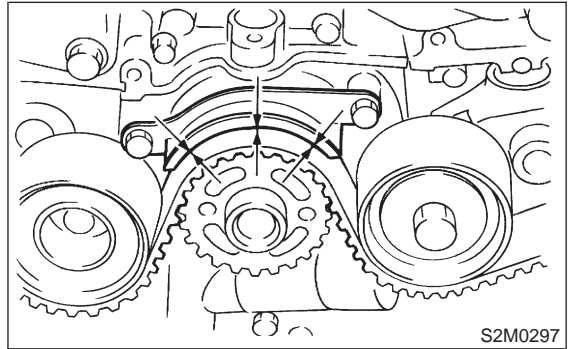
5) Install timing belt guide. (MT vehicles only)
(1) Temporarily tighten remaining bolts.



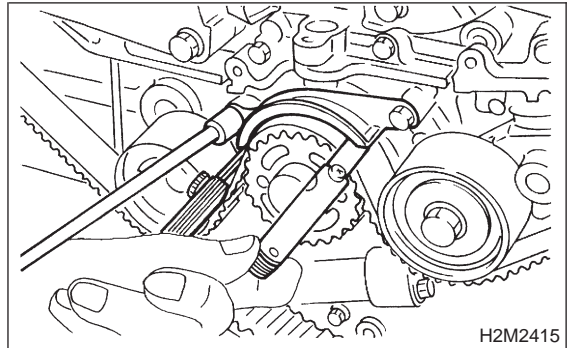
(2) Check and adjust clearance between timing belt and timing belt guide.

Clearance:

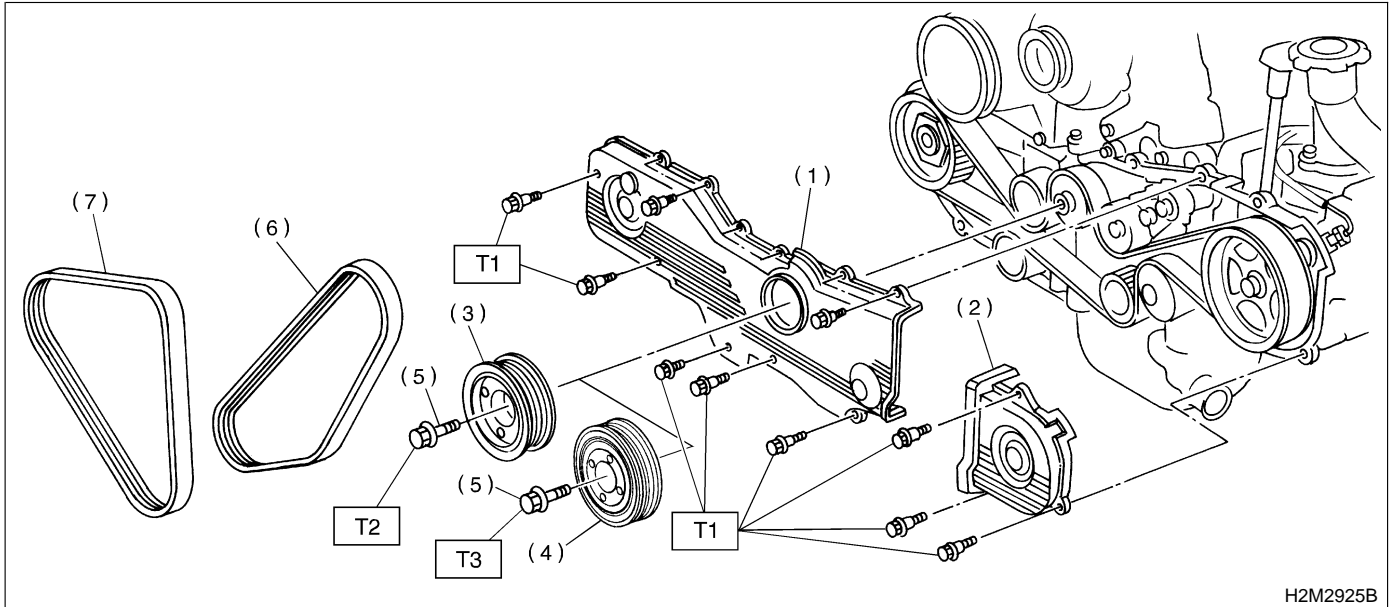
$1.0 \pm 0.5 \text{ mm}$ ($0.039 \pm 0.020 \text{ in}$)



(3) Tighten remaining bolts.



4. CRANKSHAFT PULLEY AND BELT COVER



H2M2925B

- (1) Front belt cover
- (2) Belt cover (LH)
- (3) Crankshaft pulley (2200 cc model)
- (4) Crankshaft pulley (2500 cc model)
- (5) Crankshaft pulley bolt
- (6) Rear side V-belt (With A/C model)
- (7) Front side V-belt

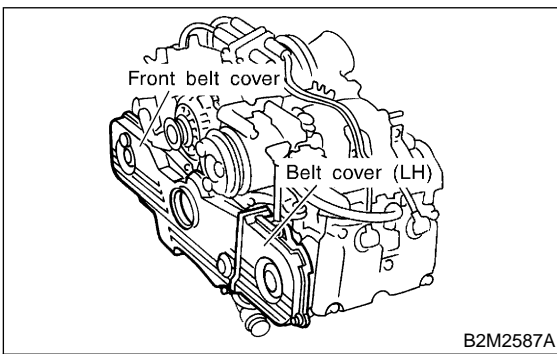
Tightening torque: N·m (kg·m, ft·lb)

T1: 5±1 (0.5±0.1, 3.6±0.7)

T2: 127±5 (13.0±0.5, 94±3.6)

T3: 177±5 (18.0±0.5, 130.2±3.6)

- 1) Install front belt cover.
- 2) Install belt cover (LH).



B2M2587A

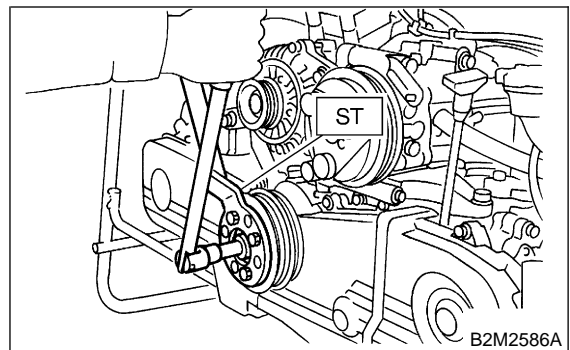
- 3) Install crankshaft pulley.

- 4) Install pulley bolt. (2200 cc model)
To lock crankshaft, use ST.
ST 499977000 CRANKSHAFT PULLEY WRENCH

- (1) Clean the crankshaft pulley thread using an air gun.
- (2) Apply engine oil to the crankshaft pulley bolt seat and thread.
- (3) Tighten the bolts temporarily with tightening torque of 44 N·m (4.5 kg·m, 33 ft·lb).
- (4) Tighten the crankshaft pulley bolts.

Tightening torque:

127±5 N·m (13.0±0.5 kg·m, 94.0±3.6 ft·lb)



B2M2586A

- 5) Confirm that the tightening angle of the crankshaft pulley bolt is 45 degrees or more. If not, conduct the following procedures (1) through (4).

- (1) Replace the crankshaft pulley bolts and clean them.

Crankshaft pulley bolt:
12369AA011

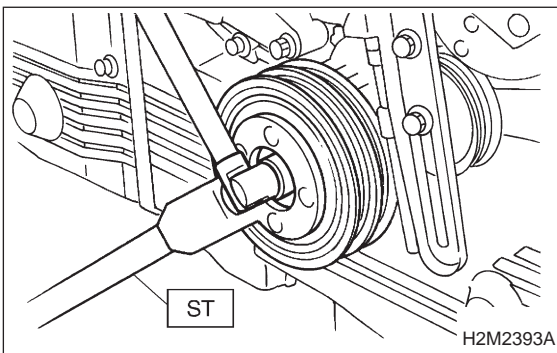
- (2) Clean the crankshaft thread using an air gun.
- (3) Tighten the bolts temporarily with tightening torque of 44 N·m (4.5 kg-m, 33 ft-lb).
- (4) Tighten the crankshaft pulley bolts keeping them in an angle between 45 degrees and 60 degrees.

CAUTION:
Conduct the tightening procedures by confirming the turning angle of the crankshaft pulley bolt referring to the gauge indicated on the belt cover.

- 6) Install pulley bolt. (2500 cc model)
To lock crankshaft, use ST.
ST 499977100 CRANKSHAFT PULLEY WRENCH

- (1) Clean the crankshaft pulley thread using an air gun.
- (2) Apply engine oil to the crankshaft pulley bolt seat and thread.
- (3) Tighten the bolts temporarily with tightening torque of 44 N·m (4.5 kg-m, 33 ft-lb).
- (4) Tighten the crankshaft pulley bolts.

Tightening torque:
177±5 N·m (18.0±0.5 kg-m, 130.2±3.6 ft-lb)



- 7) Confirm that the tightening angle of the crankshaft pulley bolt is 65 degrees or more. If not, conduct the following procedures (1) through (4).

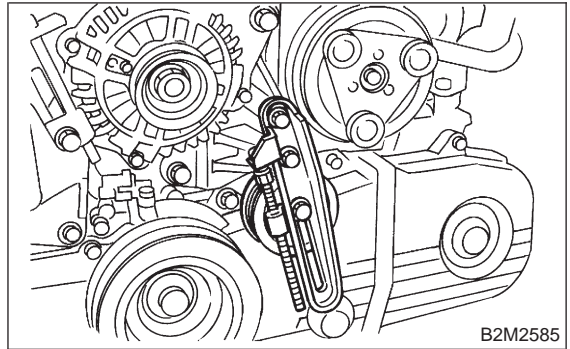
- (1) Replace the crankshaft pulley bolts and clean them.

Crankshaft pulley bolt:
12369AA011

- (2) Clean the crankshaft thread using an air gun.
- (3) Tighten the bolts temporarily with tightening torque of 44 N·m (4.5 kg-m, 33 ft-lb).
- (4) Tighten the crankshaft pulley bolts keeping them in an angle between 65 degrees and 75 degrees.

CAUTION:
Conduct the tightening procedures by confirming the turning angle of the crankshaft pulley bolt referring to the gauge indicated on the belt cover.

- 8) Install A/C belt tensioner. (With A/C model)



- 9) Install A/C belt. (With A/C model)

