

GENERAL DESCRIPTION

FUEL INJECTION (FUEL SYSTEMS)

1. General Description

A: SPECIFICATIONS

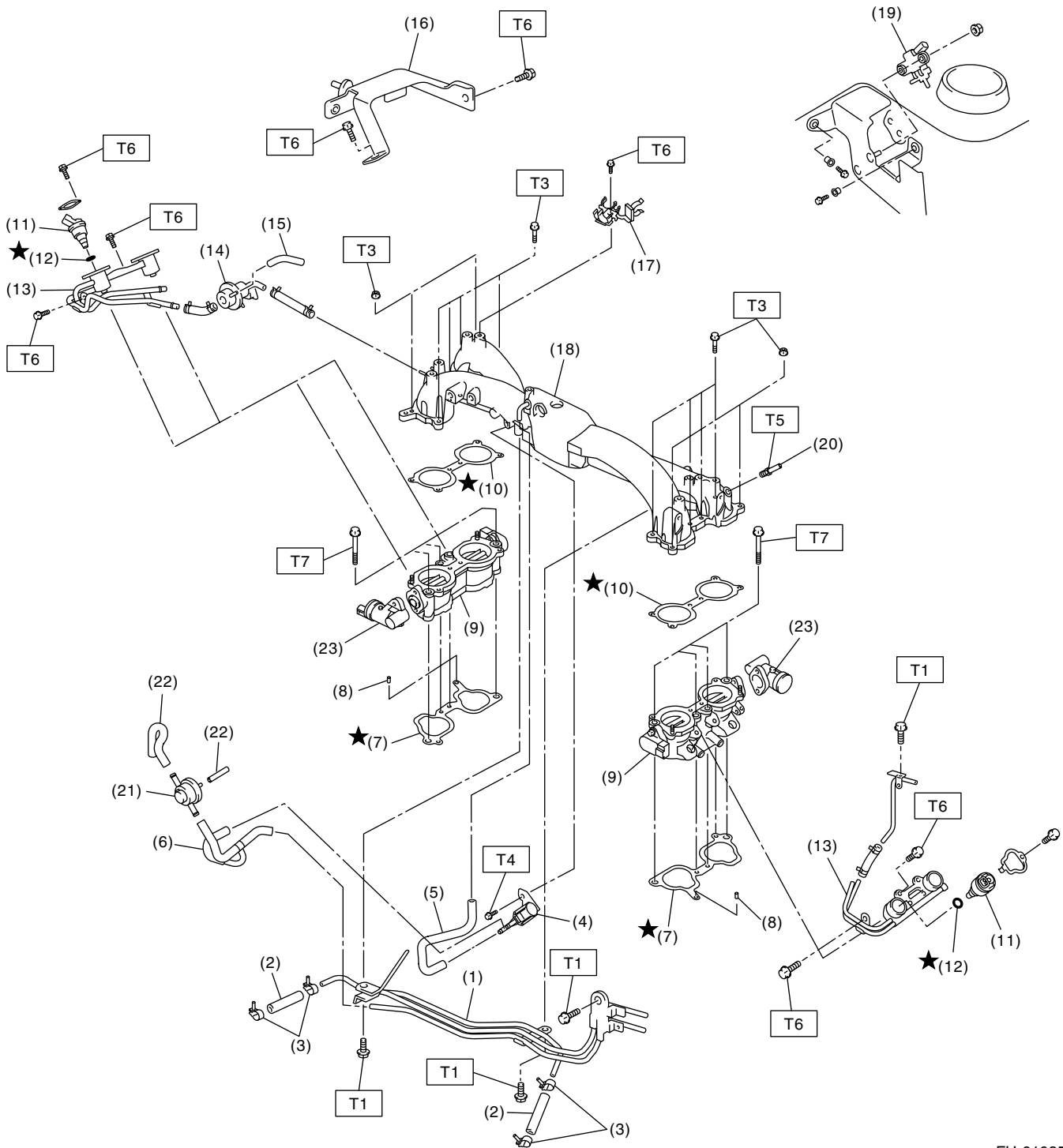
| | | |
|-------------|----------------------------|---|
| Fuel tank | Capacity | 60 ℓ (15.9 US gal, 13.2 Imp gal) |
| | Location | Under rear seat |
| Fuel pump | Type | Impeller |
| | Shutoff discharge pressure | 450 — 677 kPa (4.59 — 6.9 kg/cm ² , 65.27 — 98.2 psi) |
| | Discharge flow | More than 145 ℓ (38.3 US gal, 31.9 Imp gal)/h [12 V at 300 kPa (3.06 kg/cm ² , 43.5 psi)] |
| Fuel filter | | Cartridge type |

GENERAL DESCRIPTION

FUEL INJECTION (FUEL SYSTEMS)

B: COMPONENT

1. INTAKE MANIFOLD



FU-01035

GENERAL DESCRIPTION

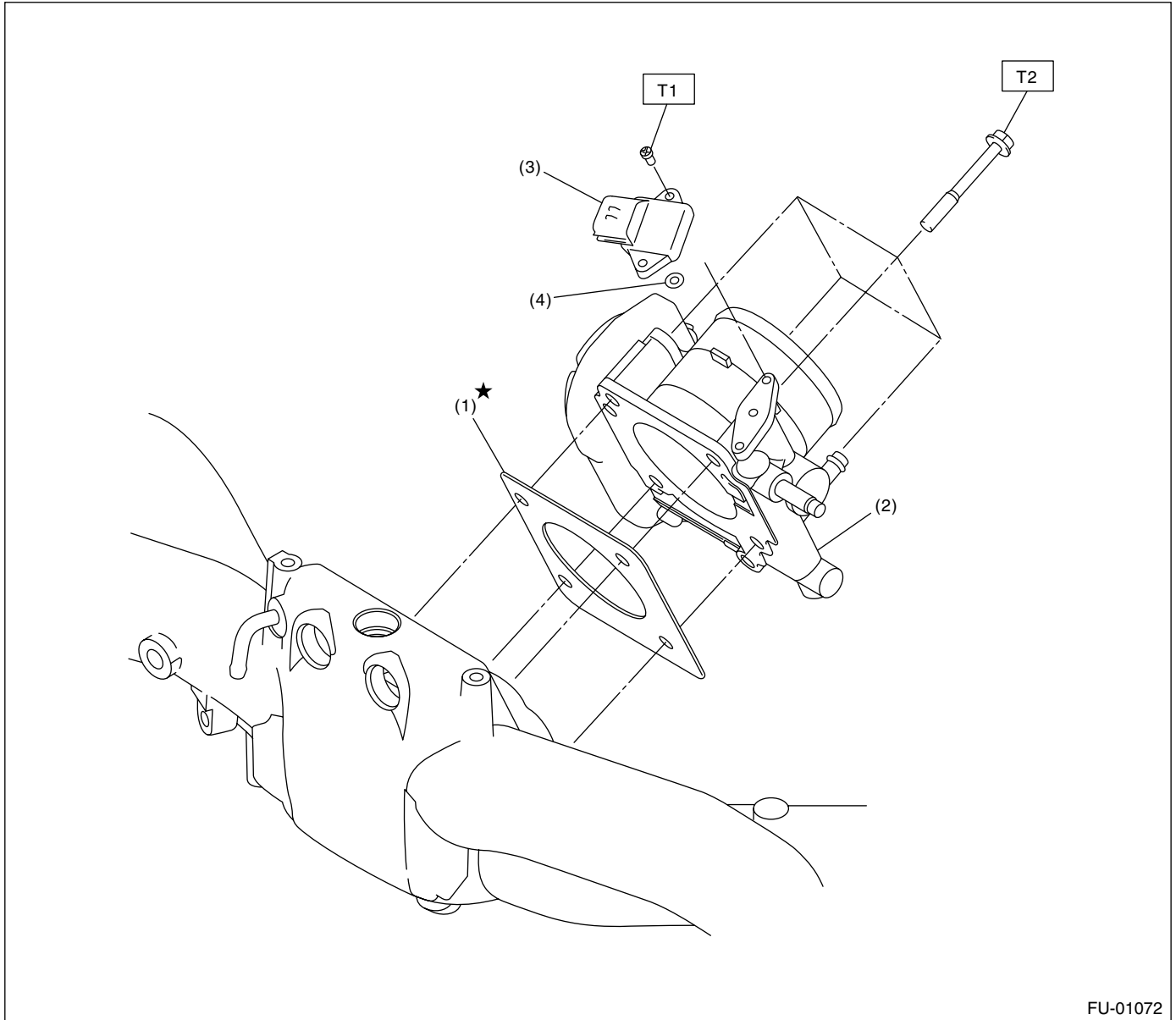
FUEL INJECTION (FUEL SYSTEMS)

| | | |
|------------------------------------|--|---|
| (1) Fuel pipe ASSY | (13) Fuel injector pipe | <i>Tightening torque: N·m (kgf-m, ft-lb)</i> |
| (2) Fuel hose | (14) Pressure regulator | <i>T1: 4.9 (0.5, 3.6)</i> |
| (3) Clip | (15) Pressure regulator hose | <i>T2: 6.4 (0.65, 4.7)</i> |
| (4) Purge control solenoid valve | (16) Fuel pipe protector RH | <i>T3: 8.25 (0.84, 6.1)</i> |
| (5) Vacuum hose | (17) Blow-by hose stay | <i>T4: 16 (1.6, 11.8)</i> |
| (6) Vacuum control hose | (18) Intake manifold | <i>T5: 17 (1.73, 12.5)</i> |
| (7) Intake manifold gasket | (19) Wastegate control solenoid valve ASSY | <i>T6: 19 (1.94, 13.7)</i> |
| (8) Guide pin | | <i>T7: 25 (2.5, 18.1)</i> |
| (9) Tumble generator valve ASSY | (20) Nipple | |
| (10) Tumble generator valve gasket | (21) Purge valve | |
| (11) Fuel injector | (22) Purge hose | |
| (12) O-ring | (23) Tumble generator valve actuator | |

GENERAL DESCRIPTION

FUEL INJECTION (FUEL SYSTEMS)

2. AIR INTAKE SYSTEM



- (1) Gasket
- (2) Throttle body

- (3) Manifold absolute pressure sensor
- (4) O-ring

Tightening torque: N·m (kgf·m, ft·lb)

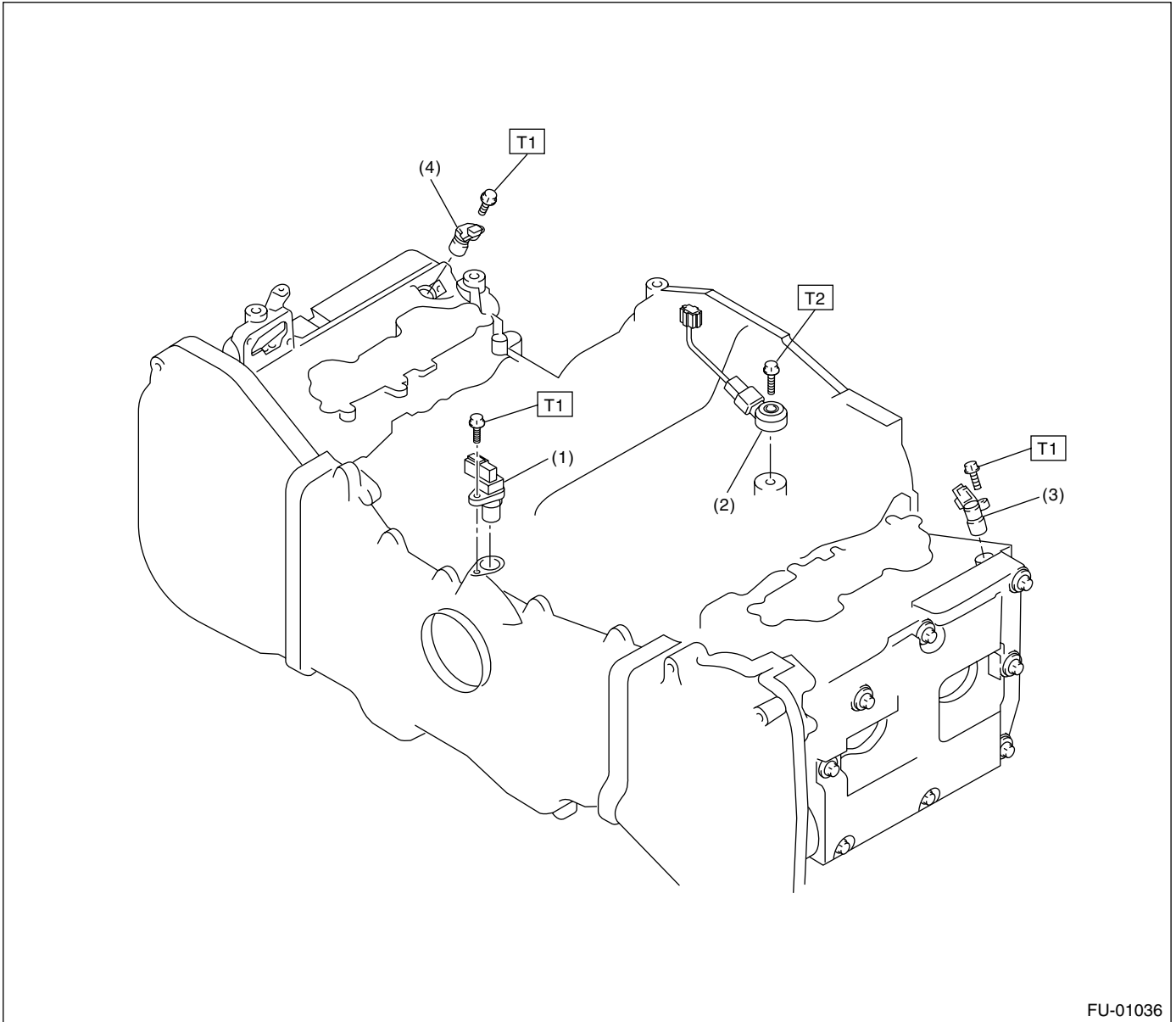
T1: 1.6 (0.16, 1.2)

T2: 8 (0.8, 5.8)

GENERAL DESCRIPTION

FUEL INJECTION (FUEL SYSTEMS)

3. CRANKSHAFT POSITION, CAMSHAFT POSITION AND KNOCK SENSORS



FU-01036

- (1) Crankshaft position sensor
- (2) Knock sensor

- (3) Camshaft position sensor LH
- (4) Camshaft position sensor RH

Tightening torque: N·m (kgf·m, ft·lb)

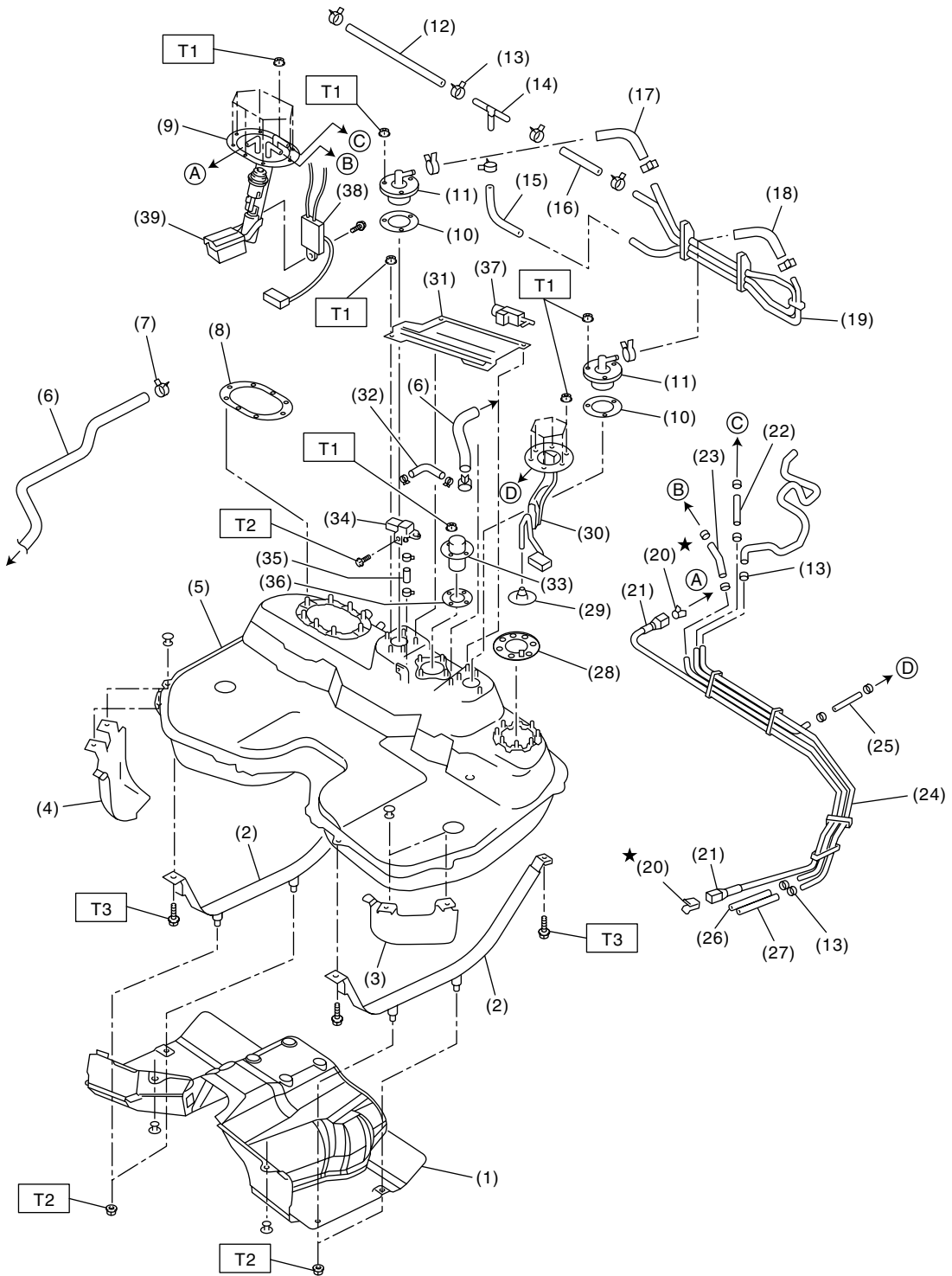
T1: 6.4 (0.65, 4.7)

T2: 24 (2.4, 17.4)

GENERAL DESCRIPTION

FUEL INJECTION (FUEL SYSTEMS)

4. FUEL TANK



FU-01060

GENERAL DESCRIPTION

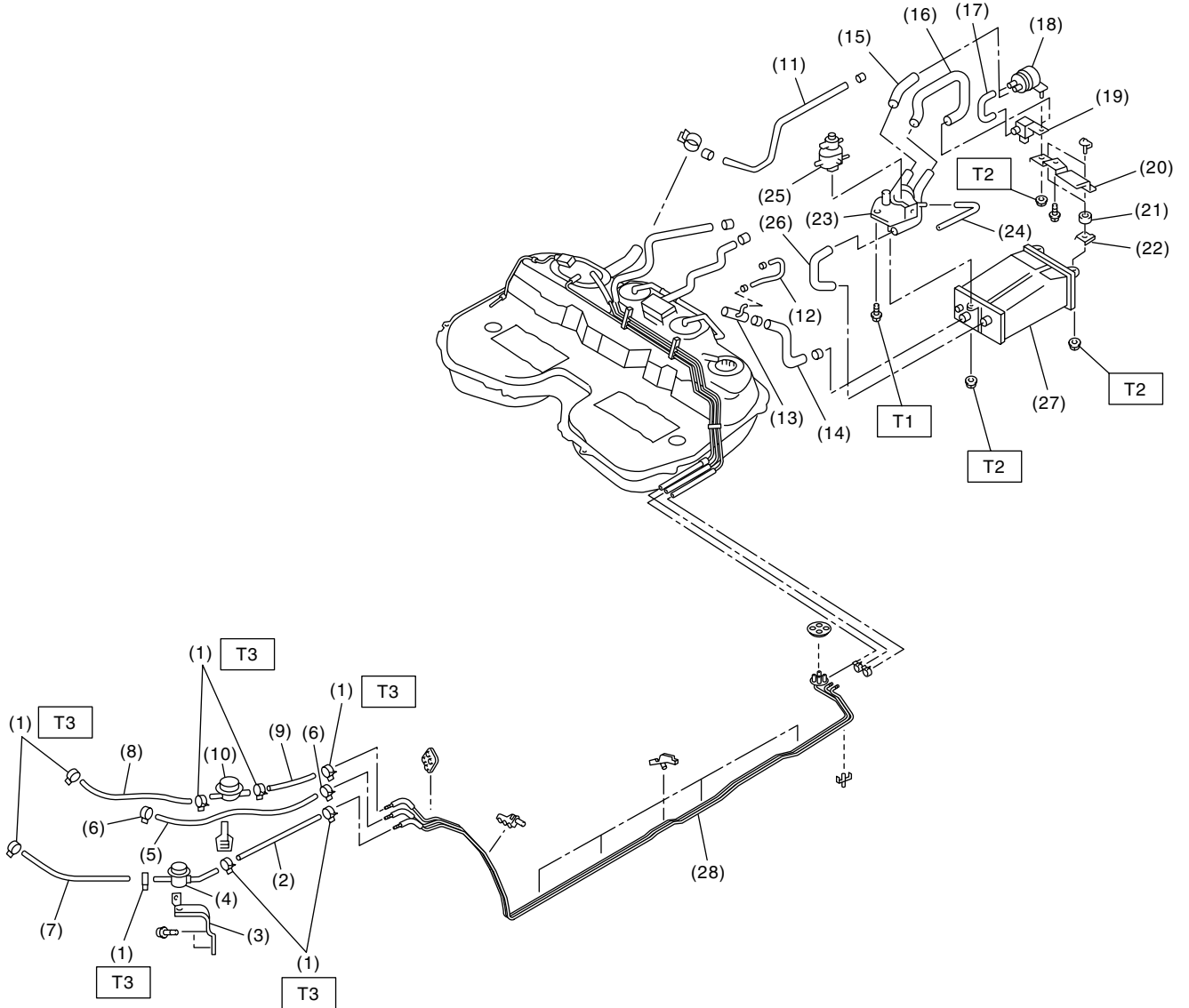
FUEL INJECTION (FUEL SYSTEMS)

| | | |
|----------------------------|-----------------------------------|--|
| (1) Heat shield cover | (16) Evaporation hose B | (31) Protector cover |
| (2) Fuel tank band | (17) Evaporation hose D | (32) Vent valve hose |
| (3) Protector LH | (18) Evaporation hose E | (33) Vent valve |
| (4) Protector RH | (19) Evaporation pipe ASSY | (34) Fuel tank pressure sensor |
| (5) Fuel tank | (20) Retainer | (35) Fuel tank pressure sensor hose |
| (6) Canister hose A | (21) Quick connector | (36) Vent valve gasket |
| (7) Clamp | (22) Jet pump hose A | (37) Fuel tank sensor control valve |
| (8) Fuel pump gasket | (23) Fuel return hose A | (38) Fuel level sensor |
| (9) Fuel pump ASSY | (24) Fuel pipe ASSY | (39) Fuel filter |
| (10) Fuel cut valve gasket | (25) Jet pump hose B | |
| (11) Fuel cut valve | (26) Fuel return hose B | <hr/> Tightening torque: N·m (kgf-m, ft-lb) |
| (12) Evaporation hose A | (27) Evaporation hose F | T1: 4.4 (0.45, 3.3) |
| (13) Clip | (28) Fuel sub level sensor gasket | T2: 7.4 (0.75, 5.4) |
| (14) Joint pipe | (29) Jet pump filter | T3: 33 (3.4, 25) |
| (15) Evaporation hose C | (30) Fuel sub level sensor | <hr/> |

GENERAL DESCRIPTION

FUEL INJECTION (FUEL SYSTEMS)

5. FUEL LINE



FU-01069

GENERAL DESCRIPTION

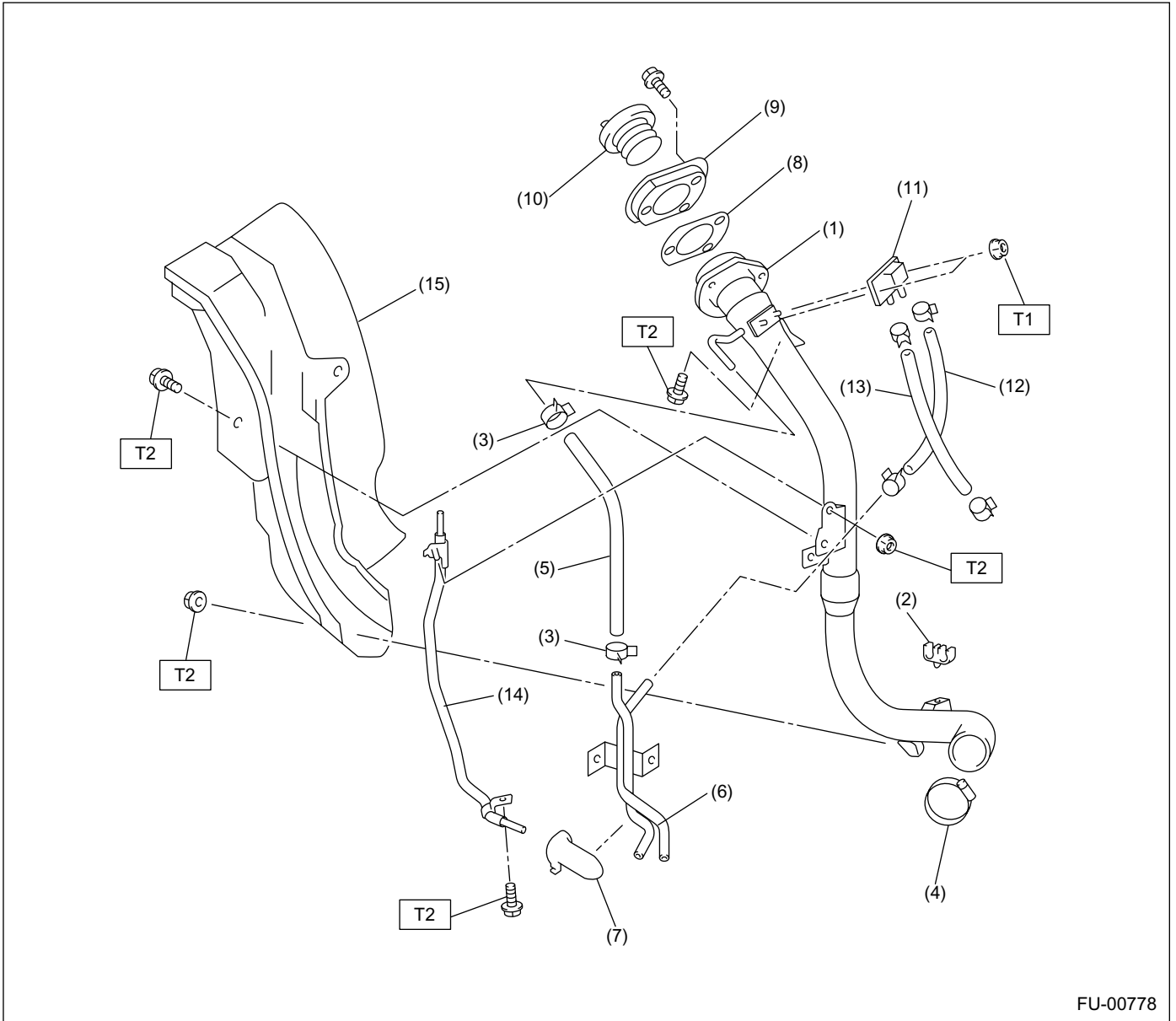
FUEL INJECTION (FUEL SYSTEMS)

| | | |
|----------------------------|-----------------------------|--|
| (1) Clamp | (13) Joint pipe | (25) Pressure control solenoid valve |
| (2) Fuel delivery hose A | (14) Canister hose A | (26) Canister hose B |
| (3) Hose bracket | (15) Air filter hose A | (27) Canister |
| (4) Fuel damper (delivery) | (16) Drain valve hose | (28) Fuel pipe ASSY |
| (5) Evaporation hose | (17) Air filter hose B | |
| (6) Clip | (18) Drain filter | <hr/> |
| (7) Fuel delivery hose B | (19) Drain valve | Tightening torque: N·m (kgf-m, ft-lb) |
| (8) Fuel return hose A | (20) Canister upper bracket | T1: 25 (2.5, 18.1) |
| (9) Fuel return hose B | (21) Cushion rubber | T2: 23 (2.3, 16.6) |
| (10) Fuel damper (return) | (22) Canister lower bracket | T3: 1.25 (0.13, 0.94) |
| (11) Evaporation hose J | (23) Canister holder | <hr/> |
| (12) Evaporation hose K | (24) Evaporation hose L | |

GENERAL DESCRIPTION

FUEL INJECTION (FUEL SYSTEMS)

6. FUEL FILLER PIPE



FU-00778

- (1) Fuel filler pipe ASSY
- (2) Evaporation hose holder
- (3) Clip
- (4) Clamp
- (5) Evaporation hose A
- (6) Evaporation pipe
- (7) Evaporation pipe holder

- (8) Filler pipe packing
- (9) Filler ring
- (10) Filler cap
- (11) Shut valve
- (12) Evaporation hose B
- (13) Evaporation hose C
- (14) Joint pipe

- (15) Fuel filler pipe protector

Tightening torque: N-m (kgf-m, ft-lb)

T1: 4.4 (0.45, 3.3)

T2: 7.5 (0.76, 5.5)

GENERAL DESCRIPTION

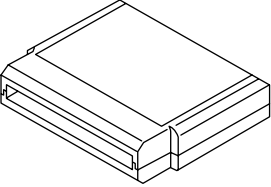

FUEL INJECTION (FUEL SYSTEMS)

C: CAUTION

- Wear working clothing, including a cap, protective goggles, and protective shoes during operation.
- Remove contamination including dirt and corrosion before removal, installation or disassembly.
- Keep the disassembled parts in order and protect them from dust or dirt.
- Before removal, installation or disassembly, be sure to clarify the failure. Avoid unnecessary removal, installation, disassembly, and replacement.

- Be careful not to burn your hands, because each part on the vehicle is hot after running.
- Be sure to tighten fasteners including bolts and nuts to the specified torque.
- Place shop jacks or safety stands at the specified points.
- Before disconnecting electrical connectors of sensors or units, be sure to disconnect negative terminal from battery.
- Place “NO FIRE” signs near the working area.
- Be careful not to spill fuel on the floor.

D: PREPARATION TOOL

| ILLUSTRATION | TOOL NUMBER | DESCRIPTION | REMARKS |
|---|-------------|--------------------|---|
|  <p style="text-align: center;">ST24082AA230</p> | 24082AA230 | CARTRIDGE | Troubleshooting for electrical system. |
|  <p style="text-align: center;">ST22771AA030</p> | 22771AA030 | SELECT MONITOR KIT | Troubleshooting for electrical systems. |