

# GENERAL DESCRIPTION

## REAR SUSPENSION

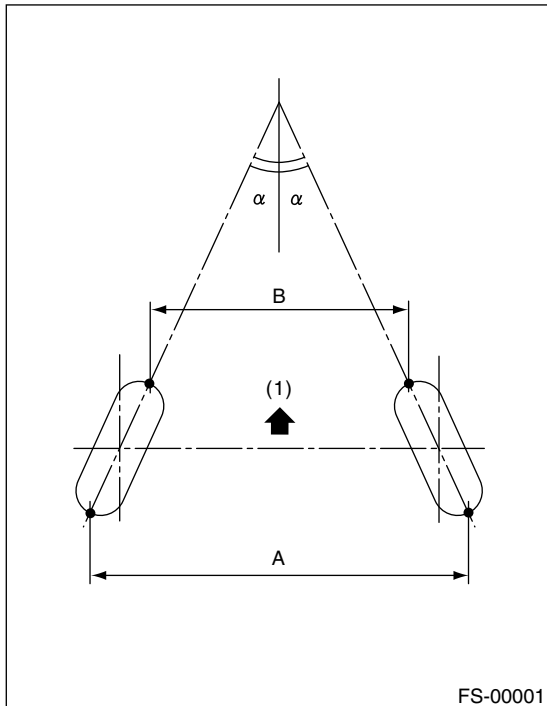
### 1. General Description

#### A: SPECIFICATIONS

Model	Sedan			Wagon		OUTBACK
	Non-turbo	Turbo	STi	Non-turbo	Turbo	
Camber (tolerance: $\pm 0^{\circ}45'$ )	$-1^{\circ}25'$	$-1^{\circ}30'$	$-1^{\circ}40'$	$-1^{\circ}15'$	$-1^{\circ}20'$	$-1^{\circ}10'$
Toe-in	$0 \pm 3$ mm ( $0 \pm 0.12$ in) Each toe angle: $\pm 0^{\circ}09'$					
Thrust angle	$0^{\circ} \pm 30'$					
Wheel arch height [tolerance: $\pm 12$ mm ( $\pm 0.47$ in)]	381 mm (15.0 in)	376 mm (14.80 in)	366 mm (14.41 in)	381 mm (15.0 in)	376 mm (14.80 in)	386 mm (15.20 in)
Diameter of stabilizer	13 mm (0.51 in)	17 mm (0.67 in)	20 mm (0.79 in)	13 mm (0.51 in)	17 mm (0.67 in)	13 mm (0.51 in)

#### NOTE:

- Front and rear toe-ins and front camber can be adjusted. If toe-in or camber tolerance exceeds specifications, adjust toe-in and camber to the middle value of specification.
- The other items indicated in the specification table cannot be adjusted. If the other items exceeds specifications, check suspension parts and connections for deformities; replace with new ones as required.



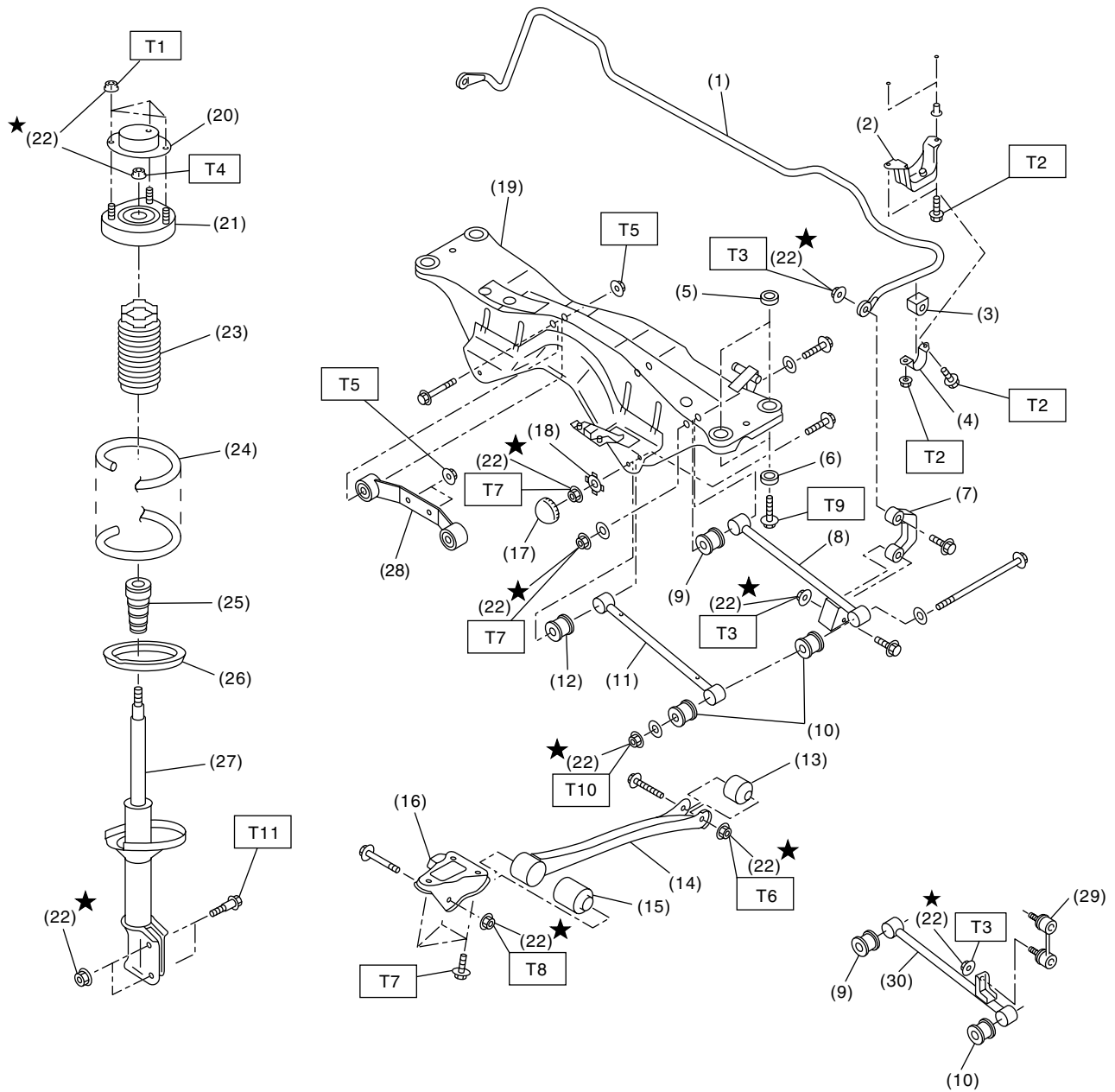
(1) Front

A – B = Positive: Toe-in, Negative: Toe-out

$\alpha$  = Each toe angle

### B: COMPONENT

#### 1. REAR SUSPENSION



RS-00111

# GENERAL DESCRIPTION

## REAR SUSPENSION

---

(1) Stabilizer	(15) Trailing link front bushing	(30) Rear lateral link (STi model)
(2) Stabilizer bracket	(16) Trailing link bracket	
(3) Stabilizer bushing	(17) Cap (Protection)	<hr/> <b>Tightening torque: N-m (kgf-m, ft-lb)</b>
(4) Clamp	(18) Washer	<b>T1: 20 (2.0, 14.5)</b>
(5) Floating bushing	(19) Rear crossmember	<b>T2: 25 (2.5, 18.1)</b>
(6) Stopper	(20) Strut mount cap	<b>T3: 45 (4.6, 33.2)</b>
(7) Stabilizer link (except STi model)	(21) Strut mount	<b>T4: 60 (6.1, 44)</b>
(8) Rear lateral link (with stabilizer, except STi model)	(22) Self-locking nut	<b>T5: 70 (7.1, 52)</b>
(9) Bushing (C)	(23) Dust cover	<b>T6: 90 (9.2, 66)</b>
(10) Bushing (A)	(24) Coil spring	<b>T7: 100 (10.2, 74)</b>
(11) Front lateral link	(25) Helper	<b>T8: 115 (11.7, 85)</b>
(12) Bushing (B)	(26) Lower rubber seat	<b>T9: 130 (13.3, 96)</b>
(13) Trailing link rear bushing	(27) Damper strut	<b>T10: 140 (14.3, 103)</b>
(14) Trailing link	(28) Rear differential member rear	<b>T11: 200 (20.0, 145)</b>
	(29) Stabilizer link (STi model)	<hr/>

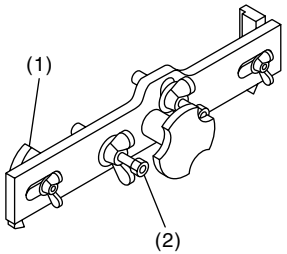
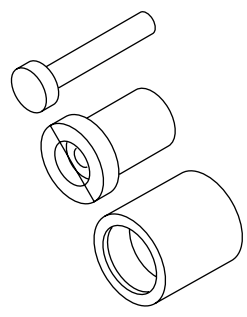
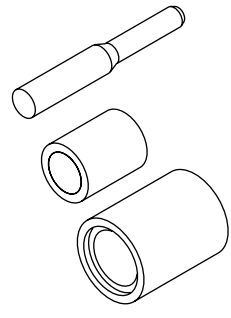
## C: CAUTION

- Wear working clothing, including a cap, protective goggles, and protective shoes during operation.
- Before disposing shock absorbers, be sure to bleed gas completely. Also, do not throw away in fire.
- Before removal, installation or disassembly, be sure to clarify the failure. Avoid unnecessary removal, installation, disassembly, and replacement.

- Use SUBARU genuine grease etc. or the equivalent. Do not mix grease etc. with that of another grade or from other manufacturers.
- Be sure to tighten fasteners including bolts and nuts to the specified torque.
- Place shop jacks or safety stands at the specified points.
- Before securing a part on a vise, place cushioning material such as wood blocks, aluminum plate, or shop cloth between the part and the vise.

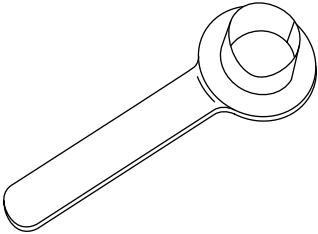
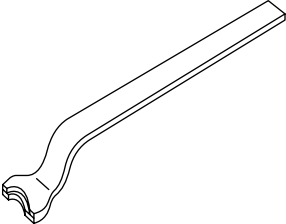
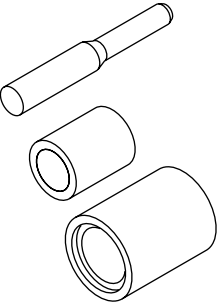
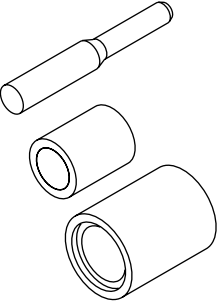
## D: PREPARATION TOOL

### 1. SPECIAL TOOLS

ILLUSTRATION	TOOL NUMBER	DESCRIPTION	REMARKS
 <p style="text-align: center;">ST-927380002</p>	927380002	ADAPTER	Used as an adapter for camber & caster gauge when measuring camber and caster. (1) 28199AC000 PLATE (2) 28199AC010 BOLT
 <p style="text-align: center;">ST-927720000</p>	927720000	INSTALLER & REMOVER	Used for replacing front bushing.
 <p style="text-align: center;">ST-927730000</p>	927730000	INSTALLER & REMOVER	Used for replacing rear bushing.

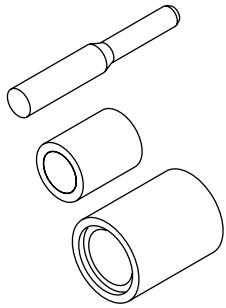
# GENERAL DESCRIPTION

## REAR SUSPENSION

ILLUSTRATION	TOOL NUMBER	DESCRIPTION	REMARKS
 <p style="text-align: center;">ST28099PA090</p>	<p style="text-align: center;">28099PA090</p>	<p>OIL SEAL PROTECTOR</p>	<ul style="list-style-type: none"> <li>• Used for installing rear drive shaft to rear differential.</li> <li>• For protecting oil seal.</li> </ul>
 <p style="text-align: center;">ST28099PA100</p>	<p style="text-align: center;">28099PA100</p>	<p>REMOVER</p>	<p>Used for removing DOJ.</p>
 <p style="text-align: center;">ST-927710000</p>	<p style="text-align: center;">927710000</p>	<p>INSTALLER &amp; REMOVER</p>	<p>Used for replacing lateral link bushing.</p>
 <p style="text-align: center;">ST-927700000</p>	<p style="text-align: center;">927700000</p>	<p>INSTALLER &amp; REMOVER</p>	<p>Used for replacing lateral link bushing.</p>

# GENERAL DESCRIPTION

REAR SUSPENSION

ILLUSTRATION	TOOL NUMBER	DESCRIPTION	REMARKS
 ST-927690000	927690000	INSTALLER & REMOVER	Used for replacing lateral link bushing.

## 2. GENERAL PURPOSE TOOLS

TOOL NAME	REMARKS
Alignment gauge	Used for wheel alignment measurement.
Turning radius gauge	Used for wheel alignment measurement.
Toe-in gauge	Used for toe-in measurement.
Transmission jack	Used for suspension assembly/disassembly.
Bearing puller	Used for removing bushings.
Coil spring compressor	Used for strut assembly/disassembly.