

# GENERAL DESCRIPTION

## PARKING BRAKE

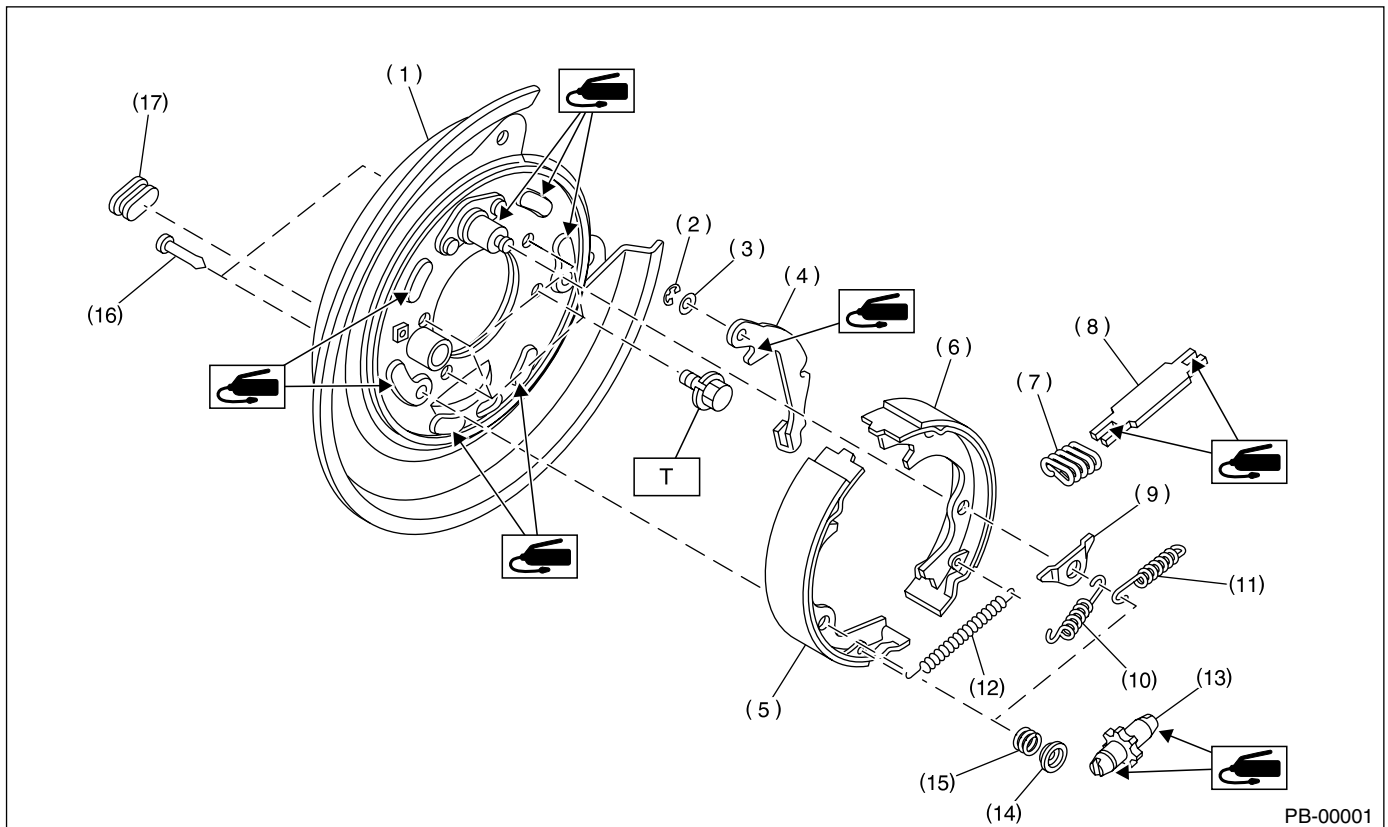
### 1. General Description

#### A: SPECIFICATIONS

Model		Except STi model	STi model
Type		Mechanical on rear brakes, drum in disc	
Effective drum diameter	mm (in)	170 (6.69)	190 (7.48)
Lining dimensions (length × width × thickness)	mm (in)	162.6 × 30.0 × 3.2 (6.40 × 1.181 × 0.126)	182.3 × 30.0 × 3.2 (7.18 × 1.181 × 0.126)
Clearance adjustment		Manual adjustment	
Lever stroke	notches/N (kgf, lb)	7 to 8/196 (20, 44)	

#### B: COMPONENT

##### 1. PARKING BRAKE (REAR DISC BRAKE)



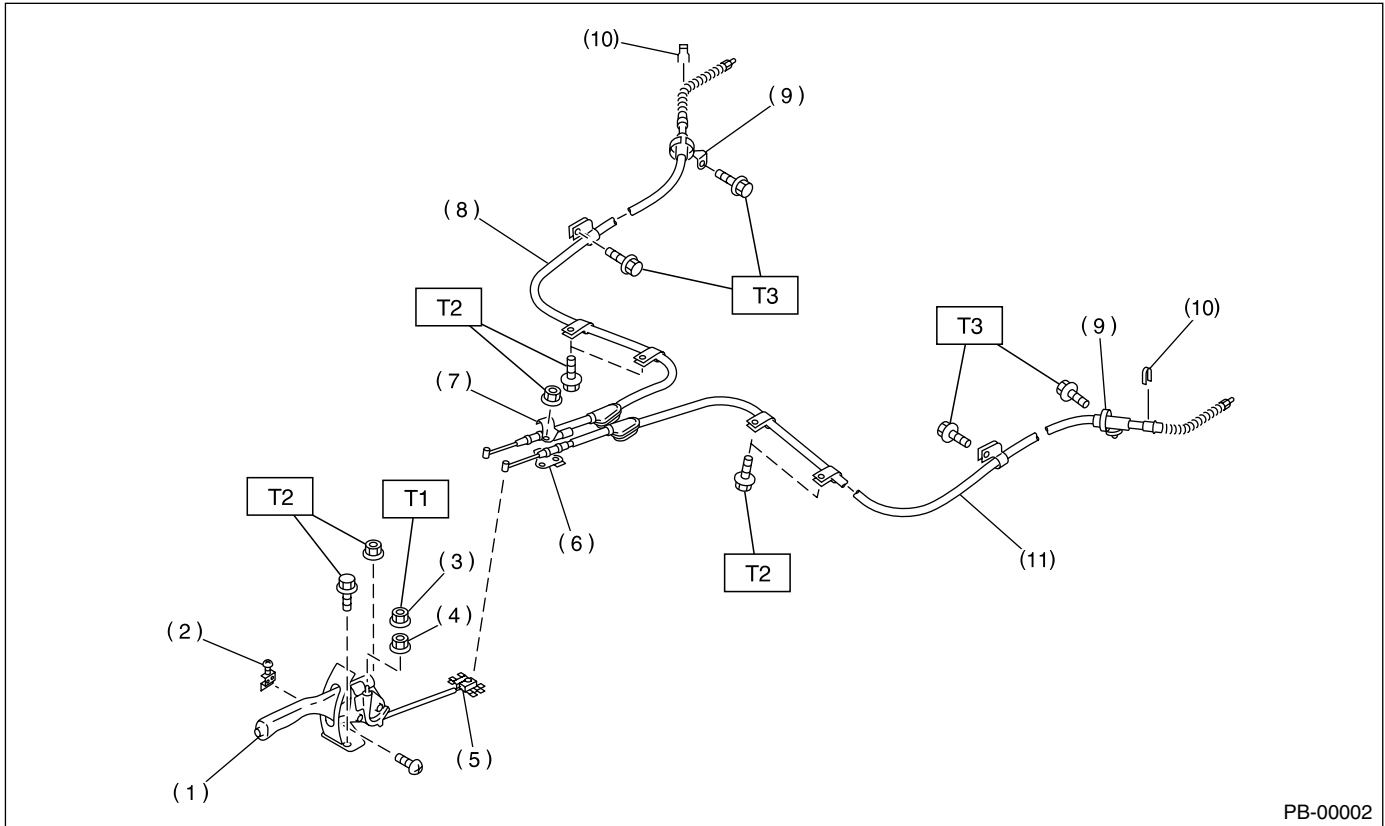
PB-00001

- |                                    |                              |                            |
|------------------------------------|------------------------------|----------------------------|
| (1) Back plate                     | (8) Strut                    | (15) Shoe hold-down spring |
| (2) Retainer                       | (9) Shoe guide plate         | (16) Shoe hold-down pin    |
| (3) Spring washer                  | (10) Primary return spring   | (17) Adjusting hole cover  |
| (4) Lever                          | (11) Secondary return spring |                            |
| (5) Parking brake shoe (Primary)   | (12) Adjusting spring        |                            |
| (6) Parking brake shoe (Secondary) | (13) Adjuster                |                            |
| (7) Strut spring                   | (14) Shoe hold-down cup      |                            |

**Tightening torque: N-m (kgf-m, ft-lb)**

**T: 53 (5.4, 39.1)**

## 2. PARKING BRAKE CABLE



PB-00002

- |                          |                                    |
|--------------------------|------------------------------------|
| (1) Parking brake lever  | (7) Clamp                          |
| (2) Parking brake switch | (8) Parking brake cable RH         |
| (3) Lock nut             | (9) Cable guide                    |
| (4) Adjusting nut        | (10) Clamp (Rear disc brake model) |
| (5) Equalizer            | (11) Parking brake cable LH        |
| (6) Bracket              |                                    |

**Tightening torque: N·m (kgf·m, ft·lb)**

**T1: 5.9 (0.6, 4.3)**

**T2: 18 (1.8, 13.0)**

**T3: 32 (3.3, 23.6)**

### C: CAUTION

- Wear working clothing, including a cap, protective goggles, and protective shoes during operation.
- Before removal, installation or disassembly, be sure to clarify the failure. Avoid unnecessary removal, installation, disassembly, and replacement.
- Be careful not to burn your hands, because each part on the vehicle is hot after running.
- Use SUBARU genuine grease etc. or the equivalent. Do not mix grease etc. with that of another grade or from other manufacturers.
- Be sure to tighten fasteners including bolts and nuts to the specified torque.
- Place shop jacks or safety stands at the specified points.
- Before securing a part on a vise, place cushioning material such as wood blocks, aluminum plate, or shop cloth between the part and the vise.
- Keep grease etc. away from parking brake shoes.