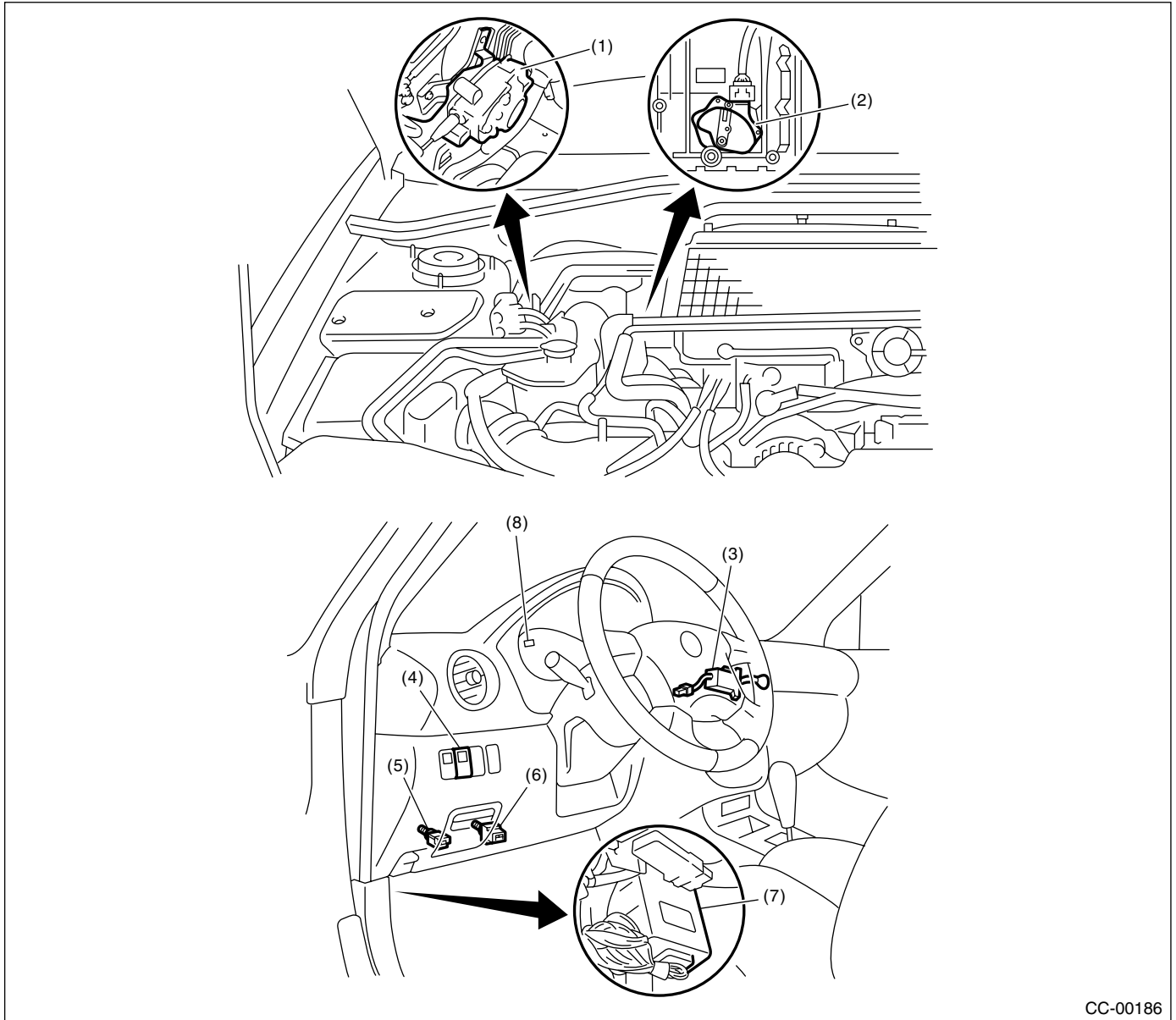


# GENERAL DESCRIPTION

## CRUISE CONTROL SYSTEM

### 1. General Description

#### A: COMPONENT



CC-00186

- |                                   |                                |   |
|-----------------------------------|--------------------------------|---|
| (1) Actuator                      | (4) Cruise control main switch | (7) Cruise control module                                 |
| (2) Inhibitor switch (AT model)   | (5) Clutch switch (MT model)   | (8) Cruise indicator light and cruise set indicator light |
| (3) Cruise control command switch | (6) Stop and brake switch      |   |

### **B: CAUTION**

- Before disassembling or reassembling parts, always disconnect the battery ground cable. When repairing the radio, control module and other parts with memory functions, make note of the memory before disconnecting the battery ground cable. All memory will be erased.
- Reassemble parts in the reverse order of disassembly unless otherwise indicated.
- Adjust parts to specifications specified in this manual.
- Connect the connectors and hoses securely during reassembly.
- After reassembly, ensure functional parts operate properly.

### **C: PREPARATION TOOL**

TOOL NAME	REMARKS
Circuit Tester	Used for measuring resistance and voltage.