

ENGINE WIRING HARNESS AND TRANSMISSION CORD

WIRING SYSTEM

53.Engine Wiring Harness and Transmission Cord

A: LOCATION

1. TURBO MODEL

Connector				Connecting to	
No.	Pole	Color	Area	No.	Name
E1	10	Light gray	A-2	B20	Bulkhead wiring harness
E2	20	Black	B-4	F61	Front wiring harness
E3	16	Brown	B-4	F60	
E4	2	Black	B-3		Purge control solenoid
E5	2	Dark gray	A-2		Fuel injector No. 1
E6	2	Dark gray	A-2		Fuel injector No. 3
E7	3	Black	A-3		Idle speed control solenoid valve
E8	3	Light gray	B-3		Engine coolant temperature sensor and thermometer
E10	2	Light gray	B-2		Crankshaft position sensor
E11	1	★	B-2		Oil pressure switch
E13	3	Black	A-3		Throttle position sensor
E14	2	Light gray	A-4		Knock sensor
E15	2	Light gray	B-4		Camshaft position sensor
E16	2	Dark gray	B-4		Fuel injector No. 2
E17	2	Dark gray	B-4		Fuel injector No. 4
E19	1	Light gray	B-3		Power steering oil pressure switch
E21	3	Black	A-3		Absolute manifold pressure sensor
E31	3	★	B-2		Ignition coil No. 1
E32	3	★	B-4		Ignition coil No. 2
E33	3	Black	A-3		Ignition coil No. 3
E34	3	Black	B-4		Ignition coil No. 4
E50	3	Black	B-3		Tumble generator valve position sensor LH
E51	2	Black	A-4		Tumble generator valve LH
E54	3	Black	A-3		Tumble generator valve position sensor RH
E55	2	Black	A-2		Tumble generator valve RH
E61	2	Dark gray	A-3		PCV diagnosis connector

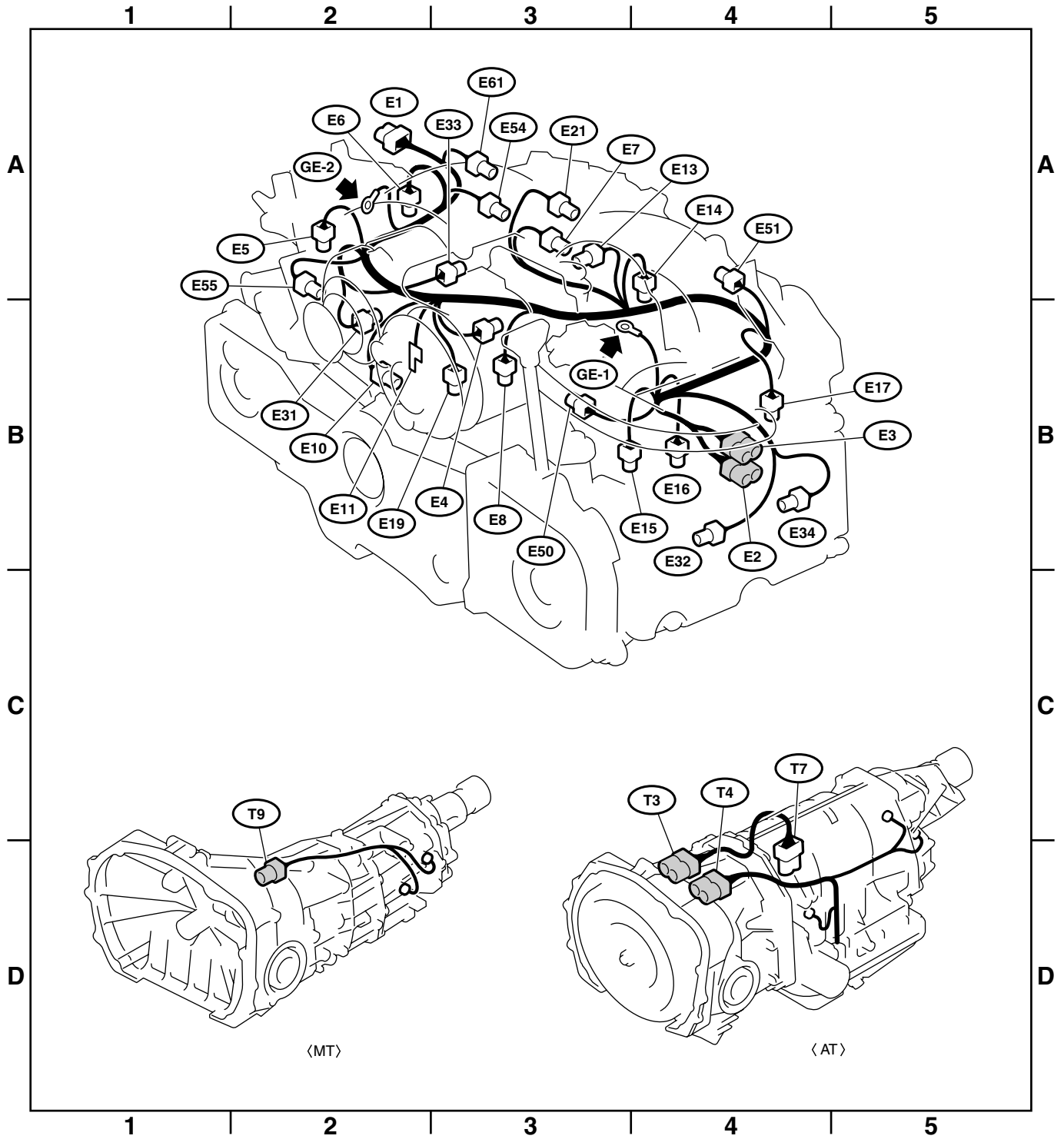
★: Non-colored

Connector				Connecting to	
No.	Pole	Color	Area	No.	Name
T3	12	★	D-4	B12	Bulkhead wiring harness (AT model)
T4	20	Black	D-4	B11	
T7	12	★	D-4		Inhibitor switch (AT model)
T9	4	★	D-2	B128	Bulkhead wiring harness (MT model)

★: Non-colored

ENGINE WIRING HARNESS AND TRANSMISSION CORD

WIRING SYSTEM



WI-02520

ENGINE WIRING HARNESS AND TRANSMISSION CORD

WIRING SYSTEM

2. NON-TURBO MODEL

Connector				Connecting to	
No.	Pole	Color	Area	No.	Name
E2	20	Light gray	A-4	B21	Front wiring harness
E3	16	Brown	A-4	B22	
E4	2	Black	A-3		Purge control solenoid valve
E5	2	Dark gray	A-2		Fuel injector No. 1
E6	2	Dark gray	A-2		Fuel injector No. 3
E7	3	Black	A-2		Idle speed control solenoid valve
E8	3	Light gray	A-3		Engine coolant temperature sensor and thermometer
E10	2	Light gray	B-3		Crankshaft position sensor
E11	1	★	B-2		Oil pressure switch
E12	4	Dark gray	A-2		Ignition coil and ignitor
E13	3	Dark brown	A-3		Throttle position sensor
E14	2	Light gray	A-3		Knock sensor
E15	2	Light gray	B-4		Camshaft position sensor
E16	2	Dark gray	B-4		Fuel injector No. 2
E17	2	Dark gray	B-4		Fuel injector No. 4
E19	1	Light gray	B-2		Power steering oil pressure switch
E20	2	Black	A-3		Intake air temperature sensor
E21	3	Black	A-3		Pressure sensor
E42	2	Purple	A-3		Air assist injector solenoid valve

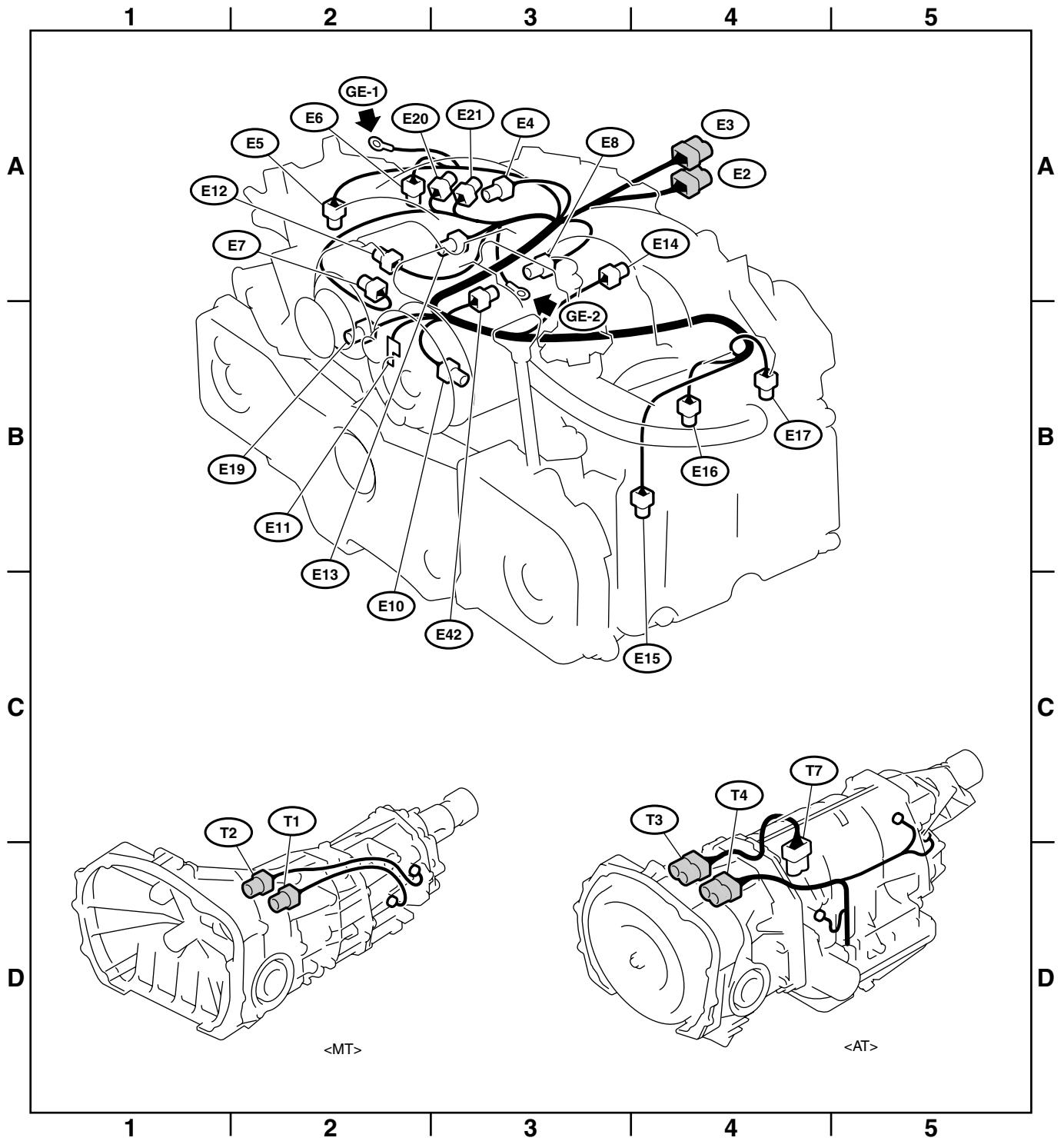
★: Non-colored

Connector				Connecting to	
No.	Pole	Color	Area	No.	Name
T1	2	Gray	D-2	B24	Bulkhead wiring harness (MT model)
T2	2	Brown	D-2	B25	
T3	12	★	D-4	B12	Bulkhead wiring harness (AT model)
T4	20	Black	D-4	B11	
T7	12	★	D-4		Inhibitor switch (AT model)

★: Non-colored

ENGINE WIRING HARNESS AND TRANSMISSION CORD

WIRING SYSTEM



WI-02521

ENGINE WIRING HARNESS AND TRANSMISSION CORD

WIRING SYSTEM

3. STi MODEL

Connector				Connecting to	
No.	Pole	Color	Area	No.	Name
E1	10	Light gray	A-2	B20	Bulkhead wiring harness
E2	20	Black	B-4	F61	Front wiring harness
E3	16	Brown	B-4	F60	
E4	2	Black	B-3		Purge control solenoid valve
E5	2	Light gray	A-2		Fuel injector No. 1
E6	2	Light gray	A-2		Fuel injector No. 3
E8	3	Light gray	B-3		Engine coolant temperature sensor and thermometer
E10	2	Light gray	B-2		Crankshaft position sensor
E11	1	★	B-2		Oil pressure switch
E14	2	Brown	A-4		Knock sensor
E16	2	Light gray	B-4		Fuel injector No. 2
E17	2	Light gray	B-4		Fuel injector No. 4
E19	1	Light gray	B-3		Power steering oil pressure switch
E21	3	Black	A-3		Pressure sensor
E31	3	★	B-2		Ignition coil No. 1
E32	3	★	B-4		Ignition coil No. 2
E33	3	Black	A-3		Ignition coil No. 3
E34	3	Black	B-4		Ignition coil No. 4
E35	3	Light gray	A-4		Active valve control camshaft position sensor LH
E36	3	Light gray	A-3		Active valve control camshaft position sensor RH
E37	2	★	B-4		Active valve control solenoid valve LH
E38	2	★	A-2		Active valve control solenoid valve RH
E50	3	Black	B-3		Tumble generator valve angle sensor LH
E51	2	Black	A-4		Tumble generator valve LH
E54	3	Black	A-3		Tumble generator valve angle sensor RH
E55	2	Black	A-2		Tumble generator valve RH
E56	4	Dark gray	A-2	B317	Bulkhead wiring harness
E57	6	Black	A-3		Electric control throttle
E61	2	Dark gray	A-3		PCV diagnosis connector

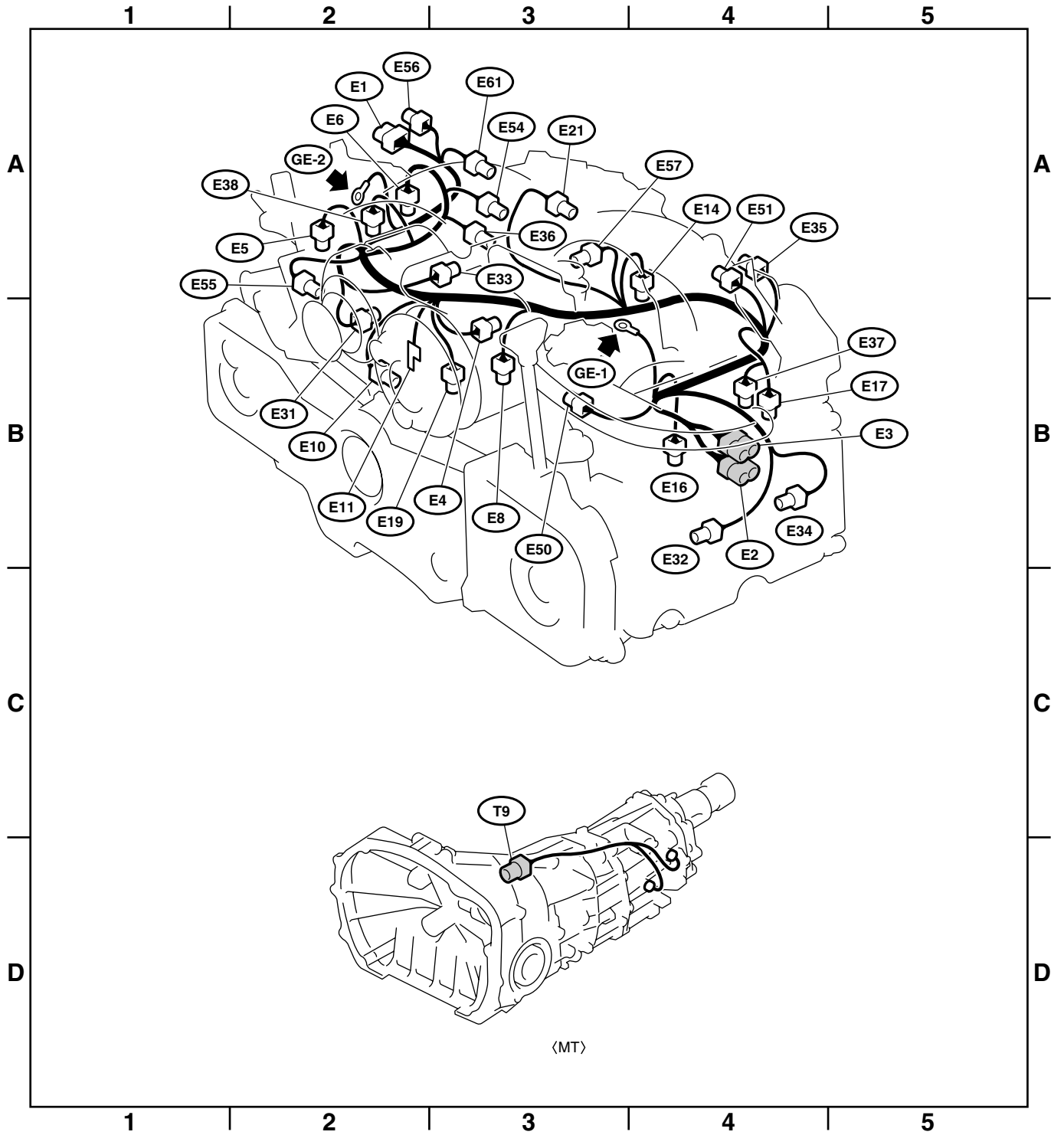
★: Non-colored

Connector				Connecting to	
No.	Pole	Color	Area	No.	Name
T9	6	★	D-2	B128	Bulkhead wiring harness

★: Non-colored

ENGINE WIRING HARNESS AND TRANSMISSION CORD

WIRING SYSTEM



<MT>

WI-02825