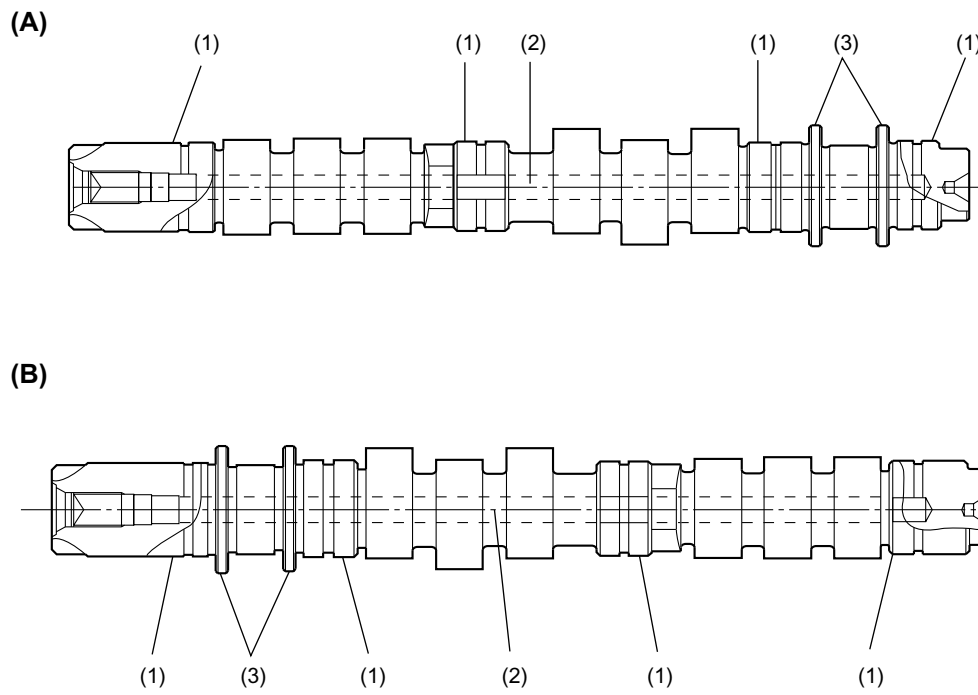


CAMSHAFT

MECHANICAL

6. Camshaft

- The camshaft is supported inside the cylinder head at four journals.
- The two flanges on each camshaft supports thrust forces to limit the end play of the camshaft within the tolerance.
- Each camshaft has an oil passage in it.



ME-00317

(A) RH

(B) LH

(1) Journal

(2) Oil passage

(3) Shaft flange

ME(H4SO)-8